

Product datasheet for **MG227418**

Pgr (NM_008829) Mouse Tagged ORF Clone

Product data:

Product Type:	Expression Plasmids
Product Name:	Pgr (NM_008829) Mouse Tagged ORF Clone
Tag:	TurboGFP
Symbol:	Pgr
Synonyms:	9930019P03Rik; BB114106; NR3; NR3C3; P; PR; PR-A; PR-B
Mammalian Cell Selection:	Neomycin
Vector:	pCMV6-AC-GFP (PS100010)
E. coli Selection:	Ampicillin (100 ug/mL)



[View online »](#)

ORF Nucleotide
Sequence:

>MG227418 representing NM_008829
 Red=Cloning site Blue=ORF Green=Tags(s)

TTTTGTAATACGACTCACTATAGGGCGGCCGGAATTCGTCGACTGGATCCGGTACCGAGGAGATCTGCC
 GCC**CGCATCGCC**

ATGACTGAGCTGCAGGCAAAGGATCCGAGGTTCTCCACACGCTCTGGCGCTTCGCCCTCCCCCACACA
 TCGGGTCCCCCTTGCTTGACGCTTGACTCAGGTCCCTTCCAAGGGAGCCAGCACTCGGACGTGTCTGTC
 TGTAAGTCTCGCCTATACCGATCTCCCTGGACGGGCTGCTTTTCTCGGTCTGCCGGGGTCCCGAGCTC
 CCAGACGGAAGACAGGGGACCAGCAGTCGCTGTCCGACGTGGAGGGAGCTTTCTCTGGGGTAGAAGCCA
 CTCATAGGGAAGGAGGCAGAAATTCAGAGCCCCGGAGAAGGACAGCAGACTCTTAGACAGTGTCTTAGA
 CTCGTTGTTGACTCCCTCCGGGACCGAACAGAGTCAGCCAGCCCTCCAGCTGCGAGGCCATCACTTCC
 TGGTGTCTCTTTGGCCAGAGCTCCAGAAGACCCCGCAGTGTCCCTGTACCAAAGGGTTGTTGTCCC
 CGCTCATGAGTCGGCCAGAGATCAAGGCTGGCGACAGCTCCGGGACAGGAGCAGGACAGAAGGTGCTGCC
 CAAAGGACTGTCACCACCAGGCAGCTGTTGCTCCCTACCTCGGGGAGTGTCTACTGGCCCGGGGACAGG
 GTGAAGCCGTCCCGCAGCCAGCTGCAGGGGAGGTGGAAGAGGACAGTGGCTGGAGACCGAGGGCTCTG
 CAGCTCCGCTTCTAAAGAGCAAACCTCGAGCACTGGAAGGCACCCGACAGCGGAGGAGGATCGCAGCCAA
 CGCGGCTCAGCGGCCAGGCGGTGCTACTCTGGTCCCAAAGGAAGATTCACGTTTTCTGCTCTAGG
 GTCTCCTTGAGCAAGACTCTCCATTGCCCGGGCGCTCCCACTGGCCACCACAGTGGTGGATTTC
 TCCATGTGCCATCTGCCTCTGAACCACGCACTCTGGCCGCCCGCACCCGGCAGCTGTGGAGGGGA
 CAGCTACGACGGCGGGCCACAGCCAGGGCCCTTTGCCCGCCTAGGGGCTCGCCTCCGCGCCATCC
 CCGCCGTTGCCCTGCGGTGACTTCCAGACTGCACCTACCCTCTGGAAGGCGACCCAAAGAGGACGTGT
 TCCCTTTTACGGCGACTTCCAGACGCTGGCTTGAAGATCAAGGAGGAGGAGGGCGGGGATGCTGC
 TGTGCGCTCGCCCGCCCTACCTGTGCGCTGGAGCCAGCTCCTCACCTTCCAGACTTCCCGCTGGCA
 CCCGCGCCGACGAGCGCCATCCTCCAGGCCGAGAAGCGGCGGTGGCCGGGACCCAGCAGCGCCG
 CGGTGTGCCAGCGTCTCCTCCGGCTCCGCGCTGGAGTGCATCTGTACAAAGCGGAGGGCGCGCCG
 CACGACGGGTTGTTGCGCCACTGCCGTGCAAGCCCCAGCCCGGCTCCTGCCTACTACCCGGGAC
 AGCCTGCCGCGCCCGGCCACCGCCGACGACCCGCCATCTACCAGCCGCTCGGCCTCAATGGGTCC
 CGCAGCTGGGCTACCAGCCGCGGTGCTCAAGGACAGCCTGCCCCAGGTACTACCCGCATACCTTA
 CCTGAGGCCAGATTCAGAAGCCAGCCAGAGCCACAGTATGGCTTTGATTCTTACCTCAGAAGATCTGC
 TTAATCTGCGGGATGAAGCATCTGGCTGTCACTATGGCGTGCTTACCTGTGGAGCTGCAAGGTCTTCT
 TTAAGAGGGCAATGGAAGGCAGCATAACTATTTATGTGCTGGAAGAAATGACTGCATTGTTGATAAAAT
 TCGCAGAAAAACTGCCAGCATGTCGTCTGAGAAAGTGTGTCAGGCTGGCATGGTCTTTGGAGGTCTG
 AAGTTTAAAGTAAAGTAAAGTCCGAGTTATGAGAACCCTTGACGGTGTGCTCTCCCCAGTCGGTGG
 GCCTTCTAACGAGAGCCAGGCCCTGGGCCAGAGAATCACCTTTTACCAAAATCAAGAAATCAACTGGT
 CCCGCACTCATCAACCTGCTCATGAGCATTGAGCCTGATGTGGTCTATGCAGGGCATGACAACAAAA
 CCTGACACTTCCAGCTCTTTGCTGACAGTCTCAACCACTAGGCGAGAGACAAGTCTTTCAGTAGTCA
 AATGGTCTAAATCTCTGCCAGGTTCCGGAACCTACACATTGATGACAGATAACCCTGATTTCAGTACTC
 CTGGATGAGCCTGATGGTGTGCTGGCTGGGGTGGAGGTCGTAAGCATGTCAGTGGACAGATGCTATAT
 TTTGCACCTGATCTAATCCTAAATGAGCAGAGGATGAAGGAGTGTCACTTACTCGCTGTGCCTACCA
 TGTGGCAATCCACAGGAGTTTGTCAAACCTCCAGGTGACCCATGAGGAATTCCTCTGTATGAAAGTCTT
 ACTACTTCTTAACACAATTCCTTTGGAAGGACTGAGGAGTCAAAGCCAGTTTGAAGAGATGAGATCAAGC
 TATATCCGCAATTGATCAAGGCAATTGGTTAAGACAGAAAGGGTTGTCCCCAGCTCACAGCGCTTCT
 ACCAACTCAAAACTTCTCGACAGCTTGCATGATCTTGTGAAACAGCTCCACCTGTACTGCTTGAATAC
 ATTCATCAATCCCGACTGGCTGTGGAATTTCCGGAATGATGTCTGAAGTTATTGCTGCCAGTTG
 CCCAAGATCCTGGCGGCATGGTGAAGCCGCTCCTCTTTCAAAAAG

ACGCGTACGCGGCCGCTCGAG - GFP Tag - GTTTAA

Protein Sequence: >MG227418 representing NM_008829
 Red=Cloning site Green=Tags(s)

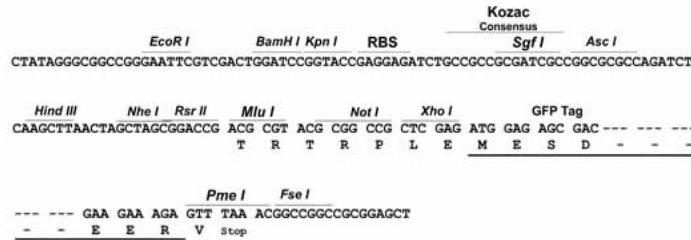
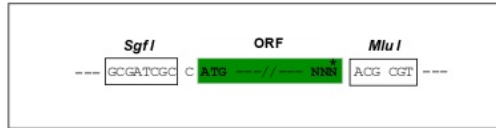
MTELQAKDPQVLHTSGASPPPHIGSPLLARLDSGPFQGSQHSVSSVSPPIPISLDGLLFPRSCRGP
 PELPDGKTGDQQLSDVEGAFSGVEATHREGGRNSRAPEKDSRLLDVLDLLTPSGTEQSHASPP
 ACEAITSWCLFGPELPEDPRSVPATKGLLSPLMSRPEIKAGDSSGTGAGQKVLPKGLSPPRQL
 LLPTSGSAHWPGAGVKPSPQPAAGEVEEDSGLLETEGSAAPLLKSKPRALEGTGSGGGVAANA
 SAAPGGVTLVPKEDSRFSAPRVSL EQDSPIAPGRSPLATTVVDFIHVPIPLNHALLAARTRQL
 LEGDSYDGGATAQGPFAAPRGSPSAPSPVPVPCGDFPDCTYPLEGDPKEDVFPLYGDFQTP
 GLKIKEEEEGADA AVRSPRPYLSAGASSSTFPDFPLAPAPQRAPSSRPGEA AVAGGPSSAA
 VSPASSGSALECILYKAEGAPPTQGSFAPLPCKPPAAGSCLLPRDSLPAAPATAAAPAIYQPL
 GLNGLPQLGYQA AVLKDSL PQVYPPYLNLRPDSEASQPQYGFDSL P QKICLICGDEASG
 CHYVGLTCGSKVFFKRAMEGQHNYLCAGRND CIVDKIRRNCPACRLRKCQAGMVLGGRK
 FKKFNKVRVMRTLDGVALPQSVGLPNESQALGQRITFSNPQEIQLVPPLINLLMSIEPDVVY
 AGHDNTK PDTSSLLTSLNQLGERQLLSVKWKS L PGRNLHIDDQITLIQYSWMSLMVFGL
 GWRSYKHVSGMQLYFAPDLILNEQRMKELSFYSLCLTMWQIPQEFVKLQVTHEEFLCMKVL
 LLLNTIPLLEGLRSQSQFEE MRSSYIRELIKAI GLRQKGVVSSQRFYQLTKLLDSLHDLVKQL
 HLYCLNTFIQSRTLAVEFPEMMSEVIAAQLPKILAGMVKPLLFHKK

TRTRPLE - GFP Tag - V

Restriction Sites: SgfI-MluI

Cloning Scheme:

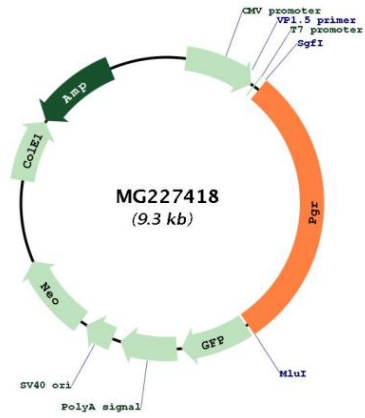
Cloning sites used for ORF Shuttling:



ACCN: NM_008829

ORF Size:	2778 bp
OTI Disclaimer:	<p>Due to the inherent nature of this plasmid, standard methods to replicate additional amounts of DNA in E. coli are highly likely to result in mutations and/or rearrangements. Therefore, OriGene does not guarantee the capability to replicate this plasmid DNA. Additional amounts of DNA can be purchased from OriGene with batch-specific, full-sequence verification at a reduced cost. Please contact our customer care team at custsupport@origene.com or by calling 301.340.3188 option 3 for pricing and delivery.</p> <p>The molecular sequence of this clone aligns with the gene accession number as a point of reference only. However, individual transcript sequences of the same gene can differ through naturally occurring variations (e.g. polymorphisms), each with its own valid existence. This clone is substantially in agreement with the reference, but a complete review of all prevailing variants is recommended prior to use. More info</p>
OTI Annotation:	This clone was engineered to express the complete ORF with an expression tag. Expression varies depending on the nature of the gene.
Components:	The ORF clone is ion-exchange column purified and shipped in a 2D barcoded Matrix tube containing 10ug of transfection-ready, dried plasmid DNA (reconstitute with 100 ul of water).
Reconstitution Method:	<ol style="list-style-type: none"> 1. Centrifuge at 5,000xg for 5min. 2. Carefully open the tube and add 100ul of sterile water to dissolve the DNA. 3. Close the tube and incubate for 10 minutes at room temperature. 4. Briefly vortex the tube and then do a quick spin (less than 5000xg) to concentrate the liquid at the bottom. 5. Store the suspended plasmid at -20°C. The DNA is stable for at least one year from date of shipping when stored at -20°C.
RefSeq:	NM_008829.2 , NP_032855.2
RefSeq Size:	6889 bp
RefSeq ORF:	2781 bp
Locus ID:	18667
UniProt ID:	Q00175
Cytogenetics:	9 A1
Gene Summary:	This gene encodes a member of the steroid receptor superfamily. The encoded protein mediates the physiological effects of progesterone, which plays a central role in reproductive events associated with the establishment and maintenance of pregnancy. [provided by RefSeq, Sep 2015]

Product images:



Circular map for MG227418