

Product datasheet for **MG227416**

Plcb2 (NM_177568) Mouse Tagged ORF Clone

Product data:

| | |
|---------------------------|---|
| Product Type: | Expression Plasmids |
| Product Name: | Plcb2 (NM_177568) Mouse Tagged ORF Clone |
| Tag: | TurboGFP |
| Symbol: | Plcb2 |
| Synonyms: | A1550384; B230205M18Rik; B230399N12 |
| Mammalian Cell Selection: | Neomycin |
| Vector: | pCMV6-AC-GFP (PS100010) |
| E. coli Selection: | Ampicillin (100 ug/mL) |
| ORF Nucleotide Sequence: | >MG227416 representing NM_177568 Red=Cloning site Blue=ORF Green=Tags(s) |

TTTTGTAATACGACTCACTATAGGGCGGCCGGAATTCGTCGACTGGATCCGGTACCGAGGAGATCTGCC
GCC**CGATCGCC**

ATGCTTTGCTCAACCTGTTCTATTGCCCCCTAACGTGAAGGCATATCTGAGCCAAGGGGAGCGCTTCA
TCAAGTGGGACGATGAACTTCAATAGCCTCTCCTGTTATCCTCCGTGTGGATCCCAAGGGCTATTACTT
ATACTGGACATATCAAAATCAGGAGATGGAGTTCCTGGATGTCACGAGTATCCGAGATACTCGTTTGGG
AAGTTTGCAAAGATACCAAGAGCCAGAACTCCGGGAGGTCTTCAACATGGACTTCCAGACAACCACT
TCCTGCTGAAAACACTCACAGTGGTGTCCGGCCCTGACATGGTGGACCTCACCTTCTACAACCTTTGTCTC
TTACAAGGAGAAGCTAGGCAAGGACTGGGCTGAGGACGTCTAGCTCTCGCCAAACACCCGATGACAGTC
AATGCTCCTCGAAGCACATTCCTGGACAAGATCCTGGTGAAGCTTAAGATGCAGCTCAACCTGAAGGGA
AGATTCCTCGTGAAGAATTTTTCCAGATGTTTCTGCTGATCGAAAACGGGTGGAAGCTGCCCTCGGTGC
TTGTACCTTGCAAAAGGCAAAATGATGCTATCAACCCAGAGGACTTCCAGAAATCCGTGTACAAGAGC
TTCCTCATGAGCCTCTGTCTCGCCAGAAATCGACGAGATCTTCACTTCTACCCTCTAAAGCTAAGC
CCTACATGACCAAGGAACACCTGACCAATTCATCAATCAGAAGCAGCGAGACCTCGACTCAACTCCTT
GCTGTTCCACAGCCCGCCTGAGCAAGTTCAGTGCTCATTGACAAGTACGAACCCAGCGGCATCAAT
GTGACAGGGGCCAGCTGTCACCAGAGGGGATGGTCTGGTTTCTGTGGACCAGAGAACAGTGTGCTGG
CCCACGATACACTGCTGATCCACCAAGACATGACACAACCACTGAATCACTATTTTCACTCAACTCCTCACA
CAACACCTACCTGACAGCCGGCCAGTTCTCAGGCTTTCTCGGCTGAGATGTACCGCCAGGTGCTGCTG
TCTGGCTGCCGTGTGTAGAGTTAGACTGTTGGAAGGGCAAGCCCTGACGAAGAGCCATTATCACCC
ACGGCTTACCATGACCACAGATATCTTGTTCAGGAAGCAATTGAAGCCATTGCAGAAAGTGCCTTTAA
GACCTCCCGTATCCTGTATCTATCATTGAAAACCATGTAGACTCACCCCGGCAACAGGCTAAGATG
GCTGAGTACTGCAGGAGCATGTTGGAGAGACCTTGCTCACAGATCCCCTGGAAAATTTCCCTCTGAAAC
CTGGCATCCCTCTGCCAGCCCCGAGGACCTCCGGGGCAAGATCCTCATTAAAGAATAAGAAGAACCAGTT
TTCTGGCCAGCATCCCCAGCAAGAAGCTGGTGGGGTGGCTGAGGGCAGCCTCCGCTAGTGTCCCT



[View online >](#)

GTAGAAGAGGACACGGGGTGGACTGCTGAGGACCGGACTGAGGTGGAGGAGGAGGAGGTGGTGAAGAGG
AGGAAGAGGAGGAGTCAGGAAACCTGGATGAAGAAGAAATTAAGAAGATGCAGTCGGATGAGGGCACAGC
AGGCCTGGAGGTGACAGCTTATGAGGAAATGTCCAGCCTTGTCATTATATCCAGCCCACCAAGTTTATC
TCCTTCGAGTTCTCTGCACAGAAGAACAGAAGTTACGTTGTCTTCTTCTCACGGAGCTCAAGGCCTACG
AGCTGCTCTCCAAGGCCTCCATGCAGTTTGTGGACTATAATAAACGCCAGATGAGCCGTGTACCCCAA
GGGCACACGCATGGACTTTCCAACACATGCCCCAGATGTTCTGGAATGCTGGATGTCAGATGGTTGCC
CTCAATTTCCAGACAATGGACCTGCCATGCAGCAGAACATGGCACTGTTTGGATTCAACGGGCAGAGTG
GCTACCTCCTAAAGCACGAGTTTCATGCGCAGACTGGACAAGCAGTTCAACCCCTTCTCAGTGGACCGCAT
TGATGTGGTGGTAGCCACCACCTTTCCATTACGATCATCTCTGGGCAGTTCCTGTCAGAGCGCAGTGTA
CGCACCTATGTGGAAGTGAAGTGTGGCTCCAGGGGACCCCAAGAGGCGGTATCGAACCAAGCTGT
CACCTACTGCTAACTCCATCAATCTGTCTGGAAGAGGAAACCTTTATCTTTGAGAAGATCTTGATGCC
TGAGCTGGCCTCCCTCAGGATAGCTGTGATGGAAGAAGGCAGCAAATTTCTTGACACCGCATCATCCCC
ATCAATGCCTTACATTCTGGATACCACCATCTGTGCTGCGCAGTGAGAGCAACATGGCCCTTACCATGC
CAGCTCTCTTTGTCTTCTGGAGATGAAGGACTACATACCTGACACCTGGGCAGATCTTACAGTAGCCCT
TGCCAACCCCATCAAGTACTTCAATGCCAGGATAAGAAGTCCGTGAAGCTCAAAGGAGTGACAGGAAGT
CTGCCCGAGAAACTCTTCTCTGGGACACCTGTTGCCAGTCAAGTCAATGGGGCGCCAGTCTCGGCAGGCA
ATGGGTCAACAGCGCCTGGGACCAAGGCCACGGGGGAAGAAGCTACGAAAAGAAGTGACAGAGCCACAGAC
CGCCAGCTTGAAGAGTTGCGGGAAGTGAAGGGCGTGGTAAAAGTGCAGCGAAGACATGAGAAGGAGCTT
CGAGAGTTGGAGCGCCGTGGAGCCCGGCCTGGGAGGAACTGCTGCAGCGTGGCGCCGCACAGCTGGCGG
AGCTCCAGACCCAGGCAGCAGGCTGCAAGCTCCGCCAGGCAAGGGCTCCCGCAAGAAGAGGACCCTGCC
CTGTGAGGAGACCGTCTGGCGCCTAGCGAGCCCCACGACCGGGCGGACCCGCGCGTGCAGGAGCTGAAG
GACAGGCTGGAGCAGGAGCTGCAGCAGCAAGGCGAGGAGCAGTACCGCTCCGTCTCAAGCGCAAGGAGC
AGCAGCTGACCGAGCAAATCGCCAAGATGATGGAGCTGGCCAGAGAGAAACAGGCTGCTGAACTCAAGAC
CTTCAAGGAGACCTCAGAAACTGACACCAAGAAATGAAGAAAAAACTGGAGGCCAAGAGGCTGGAACGG
ATCCAAGCCATGACCAAGGTACCCACAGACAAGGTGGCCAGGAGAGGCTCAAGAGAGAAATTAACAAC
CCCACATCCAGGAAGTGGTCCAGGCTGTCAAGCAGATGACAGAGACCCTGGAGCGTCAACAGGAGAAGCT
GGAAGAGAGGCAGACAGCCTGCCTGGAGCAGATCCAGGCAATGGAAGAGCAGTTCAGGAGAAGGCGCTG
GCAGAGTATGAGGCCAAGATGAAGGGCCTGGAGGCTGAAGTAAAGGAGTCGGTGCGGCCTACTTCAAGG
ACTGCTTCCCCACCGAAGCAGAAGACAAGCCTGAGAGTCTGTGAGGCCTCTGAGGAGTCTGTCCACA
GGAACCACTTGTGAGCAAGGCAGACACTCAGGAGAGCCGCCTC

ACGCGTACGCGGCCGCTCGAG - GFP Tag - GTTTAA

Protein Sequence: >MG227416 representing NM_177568
 Red=Cloning site Green=Tags(s)

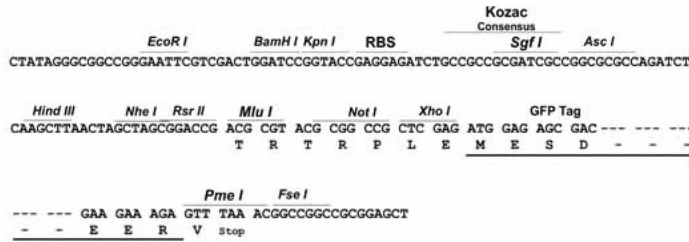
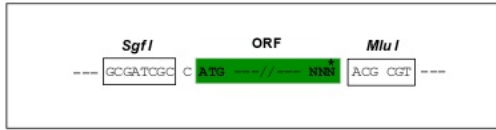
```
MSLLNPVLLPPNVKAYLSQGERFIKWDETSIASPVILRVDPKGYLYWTYQNQEMEFLDVTSIRDTRFG
KFAKIPKSQKLREVFNMDFPDNHFLKTLTVVSGPDMVDLTFYNFVSYKENVNGKDAEDVLALAKHPMTV
NAPRSTFLDKILVKLKMQLNPEGKIPVKNFFQMFPADRKRVEAALGACHLAKGKNDAINPEDFPESVYKS
FLMSLCPRPEIDEIFTSYHSKAKPYMTKEHLTKFINQKQRDPRLNSLLFPPARPEQVQVLIDKYEPSGIN
VQRGQLSPEGMVWFLCGPENSVAHDITLLIHQDMTQPLNHYFINSSHNTYLTAGQFSGLSSAEMYRQVLL
SGCRCVELDCWKGKPPDEEPIITHGFTMTDILFKEAIEAIAESAFKTSYPYPVILSFENHVDSRQQAAM
AEYCRSMFGETLLTDPLENFPLKPGIPLSPEDLRGKILIKNKNQFSGPASPSKPGGVAEGSLPSSVP
VEEDTGWTAEDRTEVEEEEVVEEEEEESGNLDEEEIKKMQSDEGTAGLEVTAYEEMSSLVNYIQPTKFI
SFEFSAQKNRSYVSSFTELKAYELLSKASMQFVDYNKRQMSRVYPKGTRMDSSNYPQMFWNAGCCMVA
LNFQTMQLPMQQNMALEFNGQSGYLLKHEFMRRLDKQFNPFVSDRIDVVVATLITITISGQFLSERV
RTYVEVELFGLPGDPKRRYRKLSTANSINPVWKEEPIFEKILMPELASLRIAVMEEGSKFLGHRIP
INALHSGYHHLCLRSESNMALTMPALFVFLEMKDYIPDTWADLTVALANPIKYFNAQDKKSVKLGVTGS
LPEKLFSGTPVASQSNGAPVSAGNGSTAPGKTATGEEATKEVTEPQTASLEELRELKGVVQLQRRHEKEL
RELERRGARRWEELLQRGAAQLAELQTQAAGCKLRPGKGRKRTLPCETVVPSEPHDRADPRVQELK
DRLEQELQQGEEQYRSVLRKRKEQHVTEQIAKMMELAREKQAAELKTFKETSETDTKEMKKLEAKRLER
IQAMTKVTTDKVAQERLREINNSHIQEVVQAVKQMTETLERHQEKLEERQTACLEQIQAMEKQFQEKAL
AEYEAKMKGLEAEVKESVRAVFKDCFPTEADKPERSCASEEPCQEPLVSKADTQESRL
```

TRTRPLE - GFP Tag - V

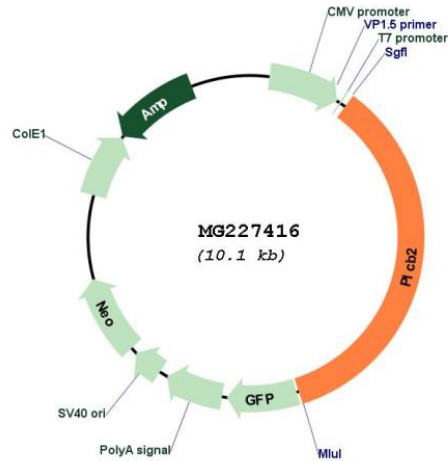
Restriction Sites:
 Cloning Scheme:

SgfI-MluI

Cloning sites used for ORF Shuttling:



Plasmid Map:



ACCN: NM_177568

ORF Size: 3543 bp

OTI Disclaimer: The molecular sequence of this clone aligns with the gene accession number as a point of reference only. However, individual transcript sequences of the same gene can differ through naturally occurring variations (e.g. polymorphisms), each with its own valid existence. This clone is substantially in agreement with the reference, but a complete review of all prevailing variants is recommended prior to use. [More info](#)

OTI Annotation: This clone was engineered to express the complete ORF with an expression tag. Expression varies depending on the nature of the gene.

Components: The ORF clone is ion-exchange column purified and shipped in a 2D barcoded Matrix tube containing 10ug of transfection-ready, dried plasmid DNA (reconstitute with 100 ul of water).

Reconstitution Method:

1. Centrifuge at 5,000xg for 5min.
2. Carefully open the tube and add 100ul of sterile water to dissolve the DNA.
3. Close the tube and incubate for 10 minutes at room temperature.
4. Briefly vortex the tube and then do a quick spin (less than 5000xg) to concentrate the liquid at the bottom.
5. Store the suspended plasmid at -20°C. The DNA is stable for at least one year from date of shipping when stored at -20°C.

RefSeq: [NM_177568.2](#), [NP_808236.2](#)

RefSeq Size: 5145 bp

RefSeq ORF: 3546 bp

Locus ID: 18796

UniProt ID: [A3KGF7](#)

Cytogenetics: 2 59.43 cM

Gene Summary:

The production of the second messenger molecules diacylglycerol (DAG) and inositol 1,4,5-trisphosphate (IP3) is mediated by activated phosphatidylinositol-specific phospholipase C enzymes. This protein may be involved in the transduction of bitter taste stimuli (By similarity).[UniProtKB/Swiss-Prot Function]