

Product datasheet for **MG227396**

Adam10 (NM_007399) Mouse Tagged ORF Clone

Product data:

Product Type:	Expression Plasmids
Product Name:	Adam10 (NM_007399) Mouse Tagged ORF Clone
Tag:	TurboGFP
Symbol:	Adam10
Synonyms:	1700031C13Rik; kuz; kuzb; kuzbanian; MADM
Mammalian Cell Selection:	Neomycin
Vector:	pCMV6-AC-GFP (PS100010)
E. coli Selection:	Ampicillin (100 ug/mL)



[View online »](#)

**ORF Nucleotide
Sequence:**

>MG227396 representing NM_007399
 Red=Cloning site Blue=ORF Green=Tags(s)

TTTTGTAATACGACTCACTATAGGGCGGCCGGGAATTCGTCGACTGGATCCGGTACCGAGGAGATCTGCC
 GCC**CGCATCGCC**

ATGGTGTGGCCGACAGTGTAAATCTGCTCCTCTCCTGGCGCGGGGCTGGGAGGTCAGTATGGAATC
 CTTTAAATAAATATATTAGACATTATGAAGGATTATCTTACAATGTGGATTCATTACACCAAAAACACCA
 GCGTGCCAAACGAGCAGTCTCACATGAGGACCAGTTTTTACTTCTAGATTTCCATGCTCATGGAAGACAG
 TTCAACCTACGAATGAAGAGGGACACTTCCCTTTTGTAGTGAATTTAAAGTAGAAACATCAAATAAAG
 TACTTGATTATGATACCTCTCATATTTACTGGACATATTTATGGTGAAGAAGGAGCTTTAGTCATGG
 GTCTGTCATTGATGGAAGATTTGAAGTTTTCATCAAGACTCGTGGTGGCAGCTTTTACATTGAGCCAGCA
 GAGAGATACATTAAGATCGAATCCTGCCATTTCACTCTGTCATTTATCATGAAGATGATATTAATATC
 CCCATAAATACGGCCACAGGGGGCTGTGCAGATCACTCCGTTTTTAAAGGATGAGGAAGTACCAAT
 GACTGGAGTAGAGGAAGGAGCCCGGCACATCCAGAGAAGCATGCTGCTAGTAGTGGTCTGAGCTCCTG
 AGGAAAAACGCACAACCTCTGGCTGAAAGAAATCTTGTGAGCTCTATATCCAGACAGATCACCTGTTCT
 TTAATACTATGGAACACGAGAAGCTGTGATTGCTCAGATATCCAGTCATGTTAAAGCAATTGATACAAT
 TTACCAGACTACAGACTTCTCCGGAATCCGTAACATCAGCTTCATGGTGAACGCATAAGAATCAATACA
 ACCTCTGATGAAAAGACCCTACAAATCCTTTCCGTTTCCCAATATTGGTGTGGAGAAGTTCTGGAGT
 TGAATCTGAGCAGAATCATGATGACTACTGCCTGGCCTATGTCTTCACAGACCGGGATTTTGTATGATG
 TGTTCTTGGTCTGGCCTGGGTTGGAGCACCTTCAGGAAGCTCTGGGGGAATATGTGAGAAAAGCAAGTTG
 TATTCAGATGGCAAGAAGAAGTCATTGAACACAGGCATCATTACTGTTCCAGAACTATGGCTCCCATGTGC
 CTCCCAAAGTCTCTCATATTACGTTTGTCTCATGAAGTTGGACATAAATTTGGATCTCCACATGATTCTGG
 AACAGAGTGTACTCCAGGAGAGTCTAAGAACTTAGGACAAAAAGAAAATGGCAATTACATCATGTATGCA
 AGAGCAACATCTGGGACAACTTAACAACAACAATTTTCACTCTGCAGCATTAGAAAACATAAGCCAAG
 TGCTTGAGAAGAAGAGGAACAACGTGTTTTGTTGAATCTGGCCAGCCTATCTGTGGAACGGGATGGTGG
 ACAAGGGGAAGAGTGTGACTGTGGCTACAGTGACCAGTGCAAAGATGATTGCTGCTTCGATGCCAACCCAG
 CCAGAGGGGAAGAAATGCAAGCTGAAGCCTGGGAAGCAGTGCAAGTCCGAGTCAAGGACCCTGCTGTACAG
 CACAGTGTGCATTCAAGTCAAAGTCTGAAAAGTCCGGGATGATTCTGACTGTGCAAAGGAAGGGATATG
 CAATGGCTTCACAGCCCTTTGCCAGCATCTGATCCCAAGCCCACTTTACAGACTGTAAAGGCACACA
 CAAGTGTGCATTAATGGCAATGTGCAGGTTCTATTTGTGAAAAGTATGACTTGGAGGAGTGCACCTGTG
 CCAGCTCTGATGGCAAAGATGATAAGGAATTATGCCATGTTTGTGTCATGAAGAAAATGGCTCCATCAAC
 TTGTGCCAGTACAGGCTCTTTGCAGTGGAGCAAGCAGTTCAGTGGTCCGACTATCACTCTGCAGCCGGGC
 TCTCCATGTAATGACTTCAGAGGCTACTGTGATGTTTTTTCATGCGGTGCAGATTAGTAGATGCTGATGGCC
 CTCTAGCTAGGCTGAAAAAGCCATTTTGTCCACAACCTATGAAAACATTGCTGAGTGGATTGTGGC
 TCACTGGTGGCAGTACTGCTTATGGGAATTGCCCTGATCATGTTAATGGCTGGATTATCAAGATTTGC
 AGTGTTACACTCCAAGTAGTAATCCAAGTTGCCGCTCCTAAACCCTCCAGGCACCTTAAAGAGGA
 GGAGACCCACAGCCCATTCAGCAGCCCCCGCTCAGAGGCCCGAGAGAGTTATCAAATGGGACACAT
 GCGACGC

ACGCGTACGCGGCCGCTCGAG - GFP Tag - GTTTAA

Protein Sequence: >MG227396 representing NM_007399
 Red=Cloning site Green=Tags(s)

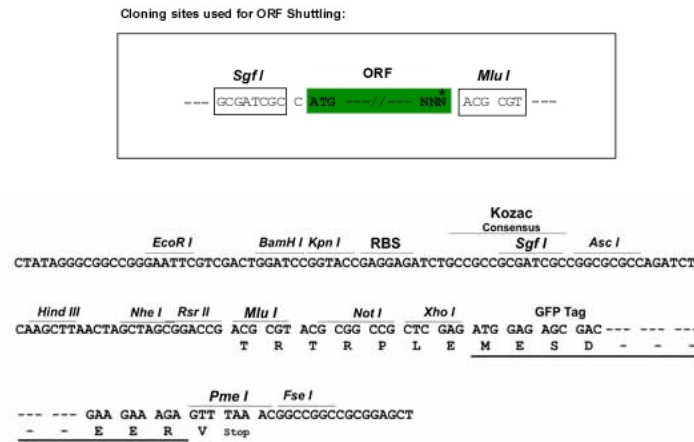
```
MVLPTVLILLLSWAAGLGGQYGNPLNKYIRHYEGLSYNVDSLHQKHQRAKRAVSHEDQFLLLDFHAHGRQ
FNLRMKRDTSLFSDEFKVESTSNKVLDDYDTSHIYTGHIYGEESF SHGSVIDGRFEGFIKTRGGTFYIEPA
ERYIKDRILPFHSVIYHEDDINYPHKYGPQGCCADHSVFERMRKYQMTGVEEGARAHPEKHAASSGPELL
RKKRTTLAERNTCQLYIQTDHLFFKYGTREAVIAQISSHVKAIDTIYQTTDFSGIRNISFMVKRIRINT
TSDEKDPNPFRRPNIGVEKFLELNSEQNHDDYCLAYVFTDRDFDDGVLGLAWVGAPSGSSGGICEKSKL
YSDGKKKSLNTGIITVQNYGSHVPPKVSHITFAHEVGHNFSPHDSGTECTPGESKNLGQKENGNYIMYA
RATSGDKLNNNKFSLCSIRNISQVLEKKRNNCFVESGQPICGNGMVEQGEECDGYSQCKDDCCFDANQ
PEGKKCKLKPGKQCSPSPQPCCTAQCAFKSKSEKCRDSDCAKEGICNGFTALCPASDPKPNFTDCNRHT
QVCINGQCAGSICEKYDLEECTASSDGDDEKELCHVCCMKMAPSTCASTGSLQWSKQFSGRTITLQPG
SPCNDFRQYCDVMRCRLVDADGPLARLKAIFSPQLYENIAEWIVAHWWAVLLMGIALIMLMAGFIKIC
SVHTPSSNPKLPPPKPLPGTLKRRRPPQPIQQPPRQRPRESYQMGHMRR
```

TRTRPLE - GFP Tag - V

Restriction Sites:

SgfI-MluI

Cloning Scheme:



ACCN: NM_007399

ORF Size: 2247 bp

OTI Disclaimer: Due to the inherent nature of this plasmid, standard methods to replicate additional amounts of DNA in E. coli are highly likely to result in mutations and/or rearrangements. Therefore, OriGene does not guarantee the capability to replicate this plasmid DNA. Additional amounts of DNA can be purchased from OriGene with batch-specific, full-sequence verification at a reduced cost. Please contact our customer care team at custsupport@origene.com or by calling 301.340.3188 option 3 for pricing and delivery.

The molecular sequence of this clone aligns with the gene accession number as a point of reference only. However, individual transcript sequences of the same gene can differ through naturally occurring variations (e.g. polymorphisms), each with its own valid existence. This clone is substantially in agreement with the reference, but a complete review of all prevailing variants is recommended prior to use. [More info](#)

OTI Annotation: This clone was engineered to express the complete ORF with an expression tag. Expression varies depending on the nature of the gene.

Components: The ORF clone is ion-exchange column purified and shipped in a 2D barcoded Matrix tube containing 10ug of transfection-ready, dried plasmid DNA (reconstitute with 100 ul of water).

Reconstitution Method:

1. Centrifuge at 5,000xg for 5min.
2. Carefully open the tube and add 100ul of sterile water to dissolve the DNA.
3. Close the tube and incubate for 10 minutes at room temperature.
4. Briefly vortex the tube and then do a quick spin (less than 5000xg) to concentrate the liquid at the bottom.
5. Store the suspended plasmid at -20°C. The DNA is stable for at least one year from date of shipping when stored at -20°C.

RefSeq: [NM_007399.4](#)

RefSeq Size: 4605 bp

RefSeq ORF: 2250 bp

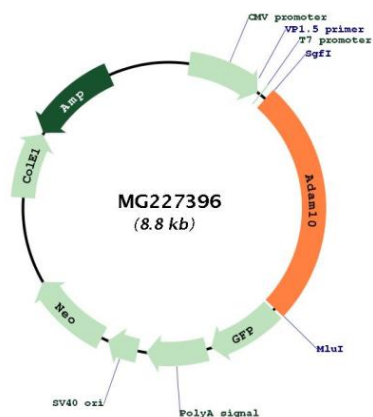
Locus ID: 11487

UniProt ID: [O35598](#)

Cytogenetics: 9 39.53 cM

Gene Summary: This gene encodes a member of a disintegrin and metalloprotease (ADAM) family of endoproteases that play important roles in various biological processes including cell signaling, adhesion and migration. The encoded preproprotein undergoes proteolytic processing to generate a mature enzyme that is involved in the proteolytic release of membrane-bound proteins in a process called ectodomain shedding. Mice lacking the encoded protein die in utero with multiple defects of the developing central nervous system, somites, and cardiovascular system. [provided by RefSeq, May 2016]

Product images:



Circular map for MG227396