

Product datasheet for **MG227380**

Ikzf3 (NM_011771) Mouse Tagged ORF Clone

Product data:

Product Type:	Expression Plasmids
Product Name:	Ikzf3 (NM_011771) Mouse Tagged ORF Clone
Tag:	TurboGFP
Symbol:	Ikzf3
Synonyms:	5830411O07Rik; Aiolos; Zfpn1a3; Zfnf1a3
Mammalian Cell Selection:	Neomycin
Vector:	pCMV6-AC-GFP (PS100010)
E. coli Selection:	Ampicillin (100 ug/mL)



[View online »](#)

ORF Nucleotide Sequence:

>MG227380 representing NM_011771
 Red=Cloning site Blue=ORF Green=Tags(s)

TTTTGTAATACGACTCACTATAGGGCGGCCGGGAATTCGTCGACTGGATCCGGTACCGAGGAGATCTGCC
 GCC**CGGATCGCC**

ATGGAAGATATACAACCGACTGTGGAGCTGAAAAGCACGGAGGAGCAGCCTCTGCCACAGAGAGCCGAG
 ACGCTCTGAATGACTACAGCTTGCCCAAACCTCATGAGATAGAAAACGTGGACAGTAGAGAAGCCCCAGC
 CAATGAAGACGAAGATGCAGGAGAAGATTTCGATGAAAAGTAAAAGATGAATACAGCGACAGAGATGAGAAC
 ATTATGAAGCCGGAGCCCATGGGAGATGCAGAAGAGAGTAAAATGCCTTACAGCTATGCAAGAGAATACA
 GCGACTATGAAAGCATTAAAGCTGGAGAGACACGTGCCCTATGACAACAGCAGACCAACCGGTGGGAAGAT
 GAACTGCGACGTGTGCGGGTTATCCTGCATTAGCTTCAACGTCTTGATGGTTCATAAGCGAAGCCATACC
 GGGCAACGCCGTTCCAGTGTAAATCAGTGCAGGATCTTTTACTCAGAAAAGTAACTCCTCCGTCATA
 TTTAACTGCACACGGGGAAAAACCTTTTAAAGTGTACCTCTGCAACTACGCATGCCAAAGGAGAGATGC
 GCTCACGGGACACCTTAGGACACATTCTGTGGAGAAGCCGTACAAGTGTGAGTTCTCGGGAAGAAGCTAC
 AAGCAGAGAAGCTCCCTGGAGGAGCACAAAGAACGCTGCCGAGCTTTTCTCAGAACCTGACCTGGGGG
 ACGCTGCAAGTGTGGAGGCAAGACACATCAAAGCCGAGATGGGAAGTGAAGAGCTCTCGTCTGGACAG
 ATTAGCAAGCAATGTGGCTAAGCGAAAAAGCTCGATGCCTCAGAAATTCATCGGTGAGAAGCGGCACTGC
 TTCGATGCCAACTACAATCCCGGCTACATGTACGAGAAGGAGAACGAGATGATGCAGACCCGGATGATGG
 ACCAAGCCATCAATAACGCCATCAGCTATCTAGGGGCTGAAGCCCTTCGCCCTTAGTCCAGACTCCGCC
 TGCTCCCACCTCTGAGATGGTCCCAGTCATCAGCAGTGTGTACCCCATAGCACTTACTCGGGCCGATG
 CCCAATGGGGCCCCGAGGAGATGGAAAAGAAACGGATCCTCCTGCCAGAGAAGATCTTGCTTCTGAAC
 GAGGTCTGTCCCAATAACAGTCCAGACTCCACAGACACCGACAGCAACCAGGAGATCGCCCAACA
 TCTCTACCAGCAAAGCCACGTGGTCTCCTCCCGCCGCAATGGGATGCCTCTTCTGAAGGAGGTCCCT
 CGCTCTTTTGAACTCCTCAAGCCCCCTCCCATCTGCCTGAGGGACTCCATCAAAGTATCAACAAAAGAG
 GGGAGGTGATGGATGTGTTTCGATGTGACCACTGCCACGTCTCTTCTAGATTATGTGATGTTCCACAT
 CCACATGGGGTGCCATGGTTTCCGTGATCCCTTTGAGTGAACATGTGTGGCTATCGAAGCCACGATCG
 TATGAGTTCTCTCACATCGCCAGAGGAGACAGAGCCATGTTGAAG

ACGCGTACGCGGCCGCTCGAG - GFP Tag - GTTTAA

Protein Sequence:

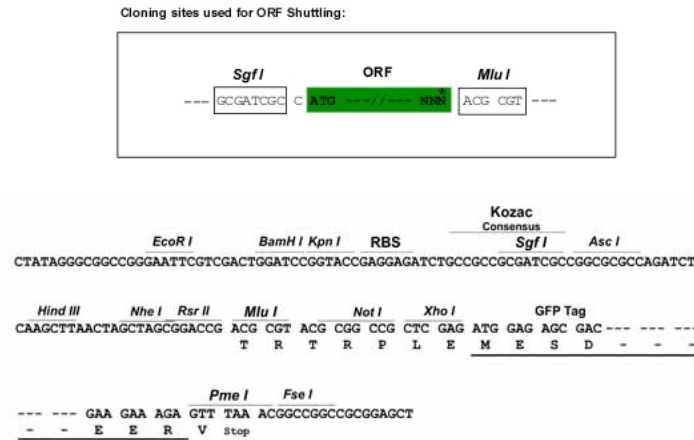
>MG227380 representing NM_011771
 Red=Cloning site Green=Tags(s)

MEDIQPTVELKSTEEQPLPTESPDALNDYSLPKPHEIENVDSREAPANEDAGEDSMKVKDEYSRDRDEN
 IMKPEPMGDAEESEMPYSYAREYSYDYESIKLERHVPYDNRPTGGKMNCDCVGLSCISFNVLMVHKRSHT
 GERPFQCNQCGASFTQKGNLLRHIKLTGKPFKCHLCNYACQRRDALTGHLRTHSVEKPYKCEFCGRSY
 KQRSSLEEHEKERCRAFLQNPDLGDAASVEARHIKAEMGSERALVLDRLASNVAKRKSMPQKFIGEKRHC
 FDANYNPGYMYEKENEMMQTRMMDQAINNAISYLGAEALRPLVQTPPAPTSEMVPVISSVYPIALTRADM
 PNGAPQEMEKKRILLPEKILPSERGLSPNNSAQDSTDSDSNHEDRQHL YQQSHVVLPQARNGMPLLKEVP
 RSEFELLKPPPICLRDSIKVINKEGEVMDVFRCDHCHVLF LDYVMFTIHMGC HGRDPFECNMGYRSHDR
 YEFSSHIARGEHRAMLK

TRTRPLE - GFP Tag - V

Restriction Sites:

Sgfl-Mlul

Cloning Scheme:


ACCN: NM_011771

ORF Size: 1521 bp

OTI Disclaimer: Due to the inherent nature of this plasmid, standard methods to replicate additional amounts of DNA in E. coli are highly likely to result in mutations and/or rearrangements. Therefore, OriGene does not guarantee the capability to replicate this plasmid DNA. Additional amounts of DNA can be purchased from OriGene with batch-specific, full-sequence verification at a reduced cost. Please contact our customer care team at custsupport@origene.com or by calling 301.340.3188 option 3 for pricing and delivery.

The molecular sequence of this clone aligns with the gene accession number as a point of reference only. However, individual transcript sequences of the same gene can differ through naturally occurring variations (e.g. polymorphisms), each with its own valid existence. This clone is substantially in agreement with the reference, but a complete review of all prevailing variants is recommended prior to use. [More info](#)

OTI Annotation: This clone was engineered to express the complete ORF with an expression tag. Expression varies depending on the nature of the gene.

Components: The ORF clone is ion-exchange column purified and shipped in a 2D barcoded Matrix tube containing 10ug of transfection-ready, dried plasmid DNA (reconstitute with 100 ul of water).

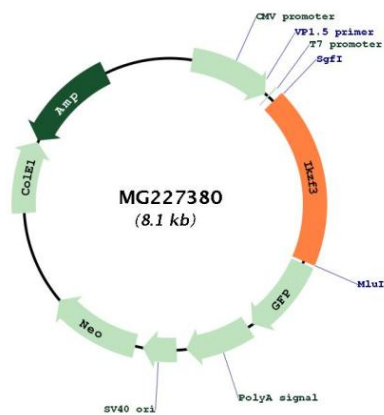
- Reconstitution Method:**
1. Centrifuge at 5,000xg for 5min.
 2. Carefully open the tube and add 100ul of sterile water to dissolve the DNA.
 3. Close the tube and incubate for 10 minutes at room temperature.
 4. Briefly vortex the tube and then do a quick spin (less than 5000xg) to concentrate the liquid at the bottom.
 5. Store the suspended plasmid at -20°C. The DNA is stable for at least one year from date of shipping when stored at -20°C.

RefSeq: [NM_011771.1](#), [NP_035901.1](#)

RefSeq Size: 4098 bp
 RefSeq ORF: 1524 bp
 Locus ID: 22780
 UniProt ID: [O08900](#)
 Cytogenetics: 11 D

Gene Summary: Transcription factor that plays an important role in the regulation of lymphocyte differentiation. Binds to GGGAA. Plays an essential role in regulation of B-cell differentiation, proliferation and maturation to an effector state. Involved in regulating BCL2 expression and controlling apoptosis in T-cells in an IL2-dependent manner.[UniProtKB/Swiss-Prot Function]

Product images:



Circular map for MG227380