

Product datasheet for **MG227371**

Il4ra (NM_001008700) Mouse Tagged ORF Clone

Product data:

Product Type:	Expression Plasmids
Product Name:	Il4ra (NM_001008700) Mouse Tagged ORF Clone
Tag:	TurboGFP
Symbol:	Il4ra
Synonyms:	CD124; Il4r
Mammalian Cell Selection:	Neomycin
Vector:	pCMV6-AC-GFP (PS100010)
E. coli Selection:	Ampicillin (100 ug/mL)



[View online »](#)

ORF Nucleotide Sequence:

>MG227371 representing NM_001008700
 Red=Cloning site Blue=ORF Green=Tags(s)

TTTTGTAATACGACTCACTATAGGGCGGCCGGAATTCGTCGACTGGATCCGGTACCGAGGAGATCTGCC
 GCC**GCGATCGCC**

ATGGGGCGGCTTTGCACCAAGTTCTGACCTCTGTGGGCTGTCTGATTTTCTGTTGGTGACTGGATCTG
 GGAGCATCAAGGTCTGGGTGAGCCACCTGCTTCTGACTACATCCGCACTTCCACGTGTGAGTGGTT
 CCTGGATAGCGCTGTGGACTGCAGTTCTCAGCTCTGCCTACACTACAGGCTGATGTTCTTCGAGTCTCT
 GAAAACCTCACATGCATCCCAGGAACAGTGCCAGCACTGTGTGTGTGCCACATGAAATGAATAGGC
 CGGTCCAATCAGACAGATACCAGATGGAAGTGTGGGCTGAGCACAGACAGCTGTGGCAGGGCTCCTTCAG
 CCCAGTGGTAATGTGAAGCCCCTAGCTCCAGACAACCTCACACTCCACACCAATGTGTCCGACGAATGG
 CTGCTGACCTGGAATAACCTGTACCCATCGAACAACTTACTGTACAAAGACCTCATCTCCATGGTCAACA
 TCTCCAGAGAGGACAACCCTGCAGAATTCATAGTCTATAATGTGACCTACAAGGAACCCAGGCTGAGCTT
 CCCGATCAACATCCTGATGTCAGGGGTCTACTATACGGCGCGTGTGAGGGTCCAGATCCAGATACTCACT
 GGCACCTGGAGTGTGAGTGCCTAGCATCACGTGGTACAACCACTTCCAGCTGCCCTGATACAGCGCC
 TTCCACTGGGGTCCACATCTCCTGCCTCTGCATCCCCTGTTTTGCCTGTTCTGTTACTTCAGCATTAC
 CAAGATTAAGAAGATATGGTGGGACCAGATTCCCACCCAGCAGCAGTCCCTTGGTGGCCATCATCATT
 CAGGATGCACAGGTGCCCTCTGGGATAAGCAGACCCGAAGCCAGGAGTCAACCAAGTACCCGCACTGGA
 AAATTGTCTAGACAAGTGTGCCTTGGCTGCTGAAGCACAGAGTAAAGAAGAAGACAGACTTCCCGAA
 GGCTGCCCCAACCAAGTCTCTCCAGAGTCTGAAAGGCCAGGCTGGTGTCCCATGGAGGTGAGCAGGACC
 GTCTCTGGCCAGAGAATGTTAGTGTAGTGTGGTGGCTGTATGGAGCTGTTTGGAGCCCCAGTACAGA
 ATGTGGAGGAGGAAGAAGATGAGATAGTCAAAGAGGACCTGAGCATGTCACCTGAGAACAGCCGAGGCTG
 CGGCTTCCAGGAGAGCCAGGCAGACATCATGGCTCGGCTCACTGAGAACCCTGTTTTCCGACTTGTGGAG
 GCTGAGAATGGGGCCTTGGCCAGTCAAGCTTGGCAGAGTCAATGCTCCCTCTGCCTTCCAGAAAGTGGC
 AGGCTTCTGTATCCTGGGCTGCCTCCCATGGGGCCAGTGGAGGCCACATGCCAGGTGACAGAGCA
 GCCTTCCACCCAGGCCCTTTTCAGGCAGCCAGCCAGAGTGCACCTACTCTGGCTTGCACGCAGGTC
 CCATTGTCTTGCAGACAATCCTGCCTACCGGAGTTTTAGTACTGCTGTAGCCCGGCCCAAATCCTG
 GAGAGCTGGCTCCAGAGCAGCAGGCTGATCATCTGGAAGAAGAGGAGCTCCAAGCCCGCTGACCC
 CCATTCTCAGGGCCACCAATGCAGCCAGTGGAGAGCTGGGAGCAGATCCTTCCATGAGTGTCTGCAG
 CATGGGGCAGCTGCTGGCTCCACCCAGCCCTGCCGGTGGCTACCAGGAGTTTGTGAGGCAGTGAAGC
 AGGGTGGCGCCAGGATCCTGGGTGCCTGGTGTGAGGCTTCTGGAGACCCCGTTACAAGGCCTTCTC
 GAGCCTGCTCAGCAGCAATGGCATCCGCGGGGACACAGCAGCAGCGGGGACTGACGATGGGCATGGAGGC
 TACAAGCCCTTCCAGAATCCTGTTCTAACCAGTCCCCTAGCTCCGTGCCCTTATTTACTTTTCGGACTAG
 ACACGGAGCTGTACCCAGTCTCTGAAGTCAAGCCACCCAAAAGCCCCCAGAATGCCTTGGTCTGGA
 GCTGGGGCTCAAAGGAGGTGACTGGGTGAAGGCCCTCCTCTGCAGATCAGGTGCCCAAGCCCTTTGGG
 GATGACCTGGGCTTTGGTATTGTGTAAGTCTGCTCCCTCACTTGCACCTTGTGTGGCCACCTGAAGCAACCC
 ACAGCCAGGAGGAAGGTGGCCAGAGCCCATCGTTGCTAGCCCTGGCTGTGGCTGCTGCTACGATGACAG
 ATCACCATCCCTGGGGAGCCTCTCGGGGGCCTTGAAAGCTGTCTGAGGGAATACCACCAGAAGCCAAC
 CTATGTGAGCAGCAACCAAGACACCCTCAAACCTTGTGAGGGAGGGCAAGGGCCCTGGTCACTCTCCTGTTCC
 CAGCCAGACGACCGAGGTGCCTGTGGCGCCCTGGGCATTGCTGTTTCT

ACCGTACGCGGCCGCTCGAG - GFP Tag - GTTTAA

Protein Sequence: >MG227371 representing NM_001008700
 Red=Cloning site Green=Tags(s)

```

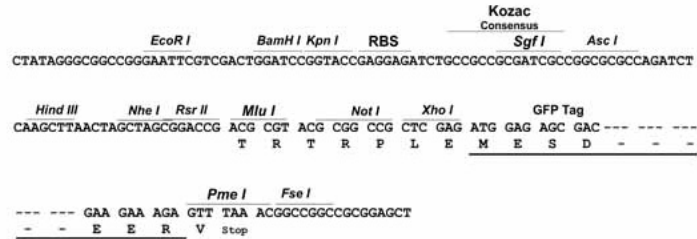
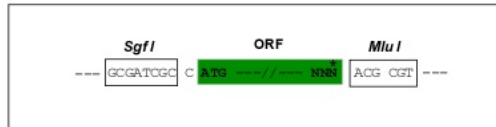
MGRLCTKFLTSVGCLILLLVGTSGSISIKVLGEPTCFSDYIRTSTCEWFLDSAVDCSSQLCLHYRLMFFFEFS
ENLTCIPRNSASTVCVCHMEMNRPVQSDRYQMELWAEHRQLWQGSFSPSGNVKPLAPDNLTLHTNVSDEW
LLTWNLLYPSNNLLYKDLISMVNISREDNPAEFIVYNVYKEPRLSFPINILMSGVYYTARVVRVRSQILT
GTWSEWSPSITWYNHFQLPLIQRLPLGVTISCLCIPLFCLFCYFSITKIKKIWWDQIPTPARSPLVAIII
QDAQVPLWDKQTRSQESTKYPHWKTCLDKLLPCLLKHRVKKKTDFPKAAPTKSLQSPGKAGWCPMEVSRT
VLWPENVSVSVVRCMELFEAPVQNVEEEEDEIVKEDLSMSPENSGGCGFQESQADIMARLTENLFSDLLE
AENGGLGQSALAECSPLPSGSGQASVSWACLPMGPSEEATCQVTEQPSHPGPLSGSPAQSAPTACTQV
PLVLADNPAYRSFSDCCSPAPNPGELAPEQQQADHLEEEPPSPADPHSSGPPMQPVESWEQILHMSVLQ
HGAAAGSTPAPAGGYQEFVQAVKQGAADPGVPGVVRPSGDPGYKAFSSLLSSNGIRGDTAAAGTDDGHGG
YKPFQNPVNPQSPSSVPLFTFGLDTELSPSPLNSDPPKSPPECLGELGLKGGDWVKAPPPADQVPKPFQ
DDLGFQIVYSSLTCHLCGHLKQHHSQEEGGQSPIVASPGCGCCYDDRSPSLGSLSGALESCEGIPPEAN
LMSAPKTPSNLSGEGKGGHSPVPSQTTEVPVVGALGIAVS
  
```

TRTRPLE - GFP Tag - V

Restriction Sites: Sgfl-Mlul

Cloning Scheme:

Cloning sites used for ORF Shutting:

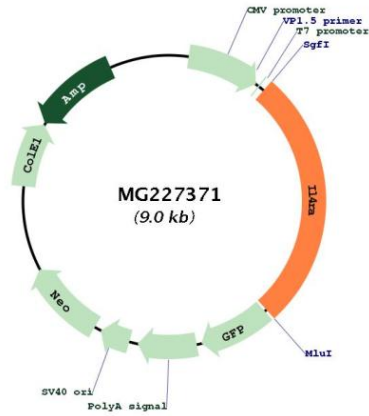


ACCN: NM_001008700

ORF Size: 2430 bp

OTI Disclaimer:	Due to the inherent nature of this plasmid, standard methods to replicate additional amounts of DNA in E. coli are highly likely to result in mutations and/or rearrangements. Therefore, OriGene does not guarantee the capability to replicate this plasmid DNA. Additional amounts of DNA can be purchased from OriGene with batch-specific, full-sequence verification at a reduced cost. Please contact our customer care team at custsupport@origene.com or by calling 301.340.3188 option 3 for pricing and delivery.
	The molecular sequence of this clone aligns with the gene accession number as a point of reference only. However, individual transcript sequences of the same gene can differ through naturally occurring variations (e.g. polymorphisms), each with its own valid existence. This clone is substantially in agreement with the reference, but a complete review of all prevailing variants is recommended prior to use. More info
OTI Annotation:	This clone was engineered to express the complete ORF with an expression tag. Expression varies depending on the nature of the gene.
Components:	The ORF clone is ion-exchange column purified and shipped in a 2D barcoded Matrix tube containing 10ug of transfection-ready, dried plasmid DNA (reconstitute with 100 ul of water).
Reconstitution Method:	<ol style="list-style-type: none"> 1. Centrifuge at 5,000xg for 5min. 2. Carefully open the tube and add 100ul of sterile water to dissolve the DNA. 3. Close the tube and incubate for 10 minutes at room temperature. 4. Briefly vortex the tube and then do a quick spin (less than 5000xg) to concentrate the liquid at the bottom. 5. Store the suspended plasmid at -20°C. The DNA is stable for at least one year from date of shipping when stored at -20°C.
RefSeq:	NM_001008700.4
RefSeq Size:	5122 bp
RefSeq ORF:	2433 bp
Locus ID:	16190
UniProt ID:	P16382
Cytogenetics:	7 68.94 cM
Gene Summary:	Receptor for both interleukin 4 and interleukin 13. Couples to the JAK1/2/3-STAT6 pathway. The IL4 response is involved in promoting Th2 differentiation. The IL4/IL13 responses are involved in regulating IgE production and, chemokine and mucus production at sites of allergic inflammation. In certain cell types, can signal through activation of insulin receptor substrates, IRS1/IRS2.[UniProtKB/Swiss-Prot Function]

Product images:



Circular map for MG227371