

## Product datasheet for **MG227307**

### **ErbB2 (NM\_001003817) Mouse Tagged ORF Clone**

#### Product data:

Product Type:	Expression Plasmids
Product Name:	ErbB2 (NM_001003817) Mouse Tagged ORF Clone
Tag:	TurboGFP
Symbol:	ErbB2
Synonyms:	c-erbB2; c-neu; ErbB-2; HER-2; HER2; I11Jus8; mKIAA3023; Neu
Mammalian Cell Selection:	Neomycin
Vector:	pCMV6-AC-GFP (PS100010)
E. coli Selection:	Ampicillin (100 ug/mL)
ORF Nucleotide Sequence:	>MG227307 representing NM_001003817 Red=Cloning site Blue=ORF Green=Tags(s)

TTTTGTAATACGACTCACTATAGGGCGGCCGGAATTCGTCGACTGGATCCGGTACCGAGGAGATCTGCC  
GCC**CGATCGCC**

ATGGAGCTGGCGGCTGGTGGCGTTGGGGTTCCTCCTCGCCCTCCTGTCCCCGGAGCCGCGGGTACCC  
AAGTGTGTACCGGTACCGACATGAAGTTGCGACTCCCTGCCAGTCTGAGACCCACCTGGACATGCTTCG  
CCACCTTACCAGGGCTGTCAGGTGGTGCAGGGCAATTTGGAGCTTACCTACCTGCCCGCAATGCCAGC  
CTCTCATTCTGCAGGACATCCAGGAAGTCCAGGGATACATGCTCATCGCTCACAACCGAGTGAAACACG  
TCCCACCTGCAGAGGTTGGCATCGTGAGAGGGACTCAGCTCTTTGAGGACAAGTATGCCCTGGCTGTGCT  
AGACAACCGAGACCCCTTTGGACAACGTCACCACCGCCGCCAGGCAGAACCCAGAAAGGCTGCGGGAG  
CTGCAGCTTCGAAGTCTCACAGAGATCTTGAAGGGAGGAGTTTTGATCCGTGGGAACCCCTCAGCTCTGCT  
ACCAGGACATGGTTTTGTGGAAGGATGTCTCCGTAAGAATAACCAGCTGGCTCCTGTGCGACATGGACAC  
CAATCGTTCCCGGGCCTGTCCACCTTGTGCCCCAACCTGCAAAGACAATCACTGTTGGGGTGAGAGTCTT  
GAAGACTGTGAGATCTTGACTGGCACCATCTGTACTAGTGGTGTGCCCGGTGCAAGGGCCGGCTGCCCA  
CTGACTGTTGCCATGAGCAGTGTGCTGCAGGCTGCACGGGTCCCAAGCATTCTGACTGCCTGGCTGCCT  
CCACTTCAATCATAGTGGTATCTGTGAGCTGACTGCCCGGCCCTCATCACCTACAACACAGACACCTTC  
GAGTCCATGCTCAACCTGAGGGTGCCTACACCTTTGGTGCCAGCTGTGTGACCACCTGCCCTACAAC  
ACCTCTCCACGGAAGTGGGATCCTGCACTCTGGTCTGTCCCGAACAACCAAGAGGTACAGCTGAGGA  
CGGAACACAGCGGTGTGAGAAATGCAGCAAGCCCTGTGCTGGAGTATGCTATGGTCTGGGATGGAGCAC  
CTCCGAGGGGCGAGGGCCATCACAGTGAACAATCCAGGAGTTTGTGGCTGCAAGAAGATCTTTGGGA  
GCCTGGCATTGTTGCCGAGAGCTTTGATGGGAACCCCTCCTCCGGCGTTGCCCACTGAAGCCAGAGCA  
TCTCCAAGTGTTCGAAACCCCTGGAGGAGATCACAGTTACCTATAACATTCAGCATGGCCAGAGAGCTTC  
CAAGACCTCAGTGTCTCCAGAACCTTCGGGTCAATCGGGGACGGATTCTCCATGATGGTGTACTCAT  
TGACGTTGCAAGGCTGGGATTCACTCACTGGGGCTACGCTCACTGCGGGAGCTGGGCAGTGGATTGGC  
TCTCATTACCGCAACCCATCTCTGCTTTGTAACACTGTACCTTGGGACCAGCTCTCCGGAACCCG



[View online >](#)

CACCAGGCCCTACTCCACAGTGGGAACCGGCCAGAAAGAGGCATGTGGTCTTGAGGGCTTGGTCTGTAAC  
CACTGTGTGCCGTGGGCACTGCTGGGGCCAGGGCCACCCAGTGTGTCAACTGCAGTCAGTTCCTCCG  
GGGCCAGGAGTGTGTGGAGGAGTCCGAGTATGGAAGGGGCTCCCAGGGAGTATGTGAGGGGCAAGCAC  
TGTCTGCCATGCCACCCGAGTGTGACCTCAAAACAGCTCGGAGACCTGCTATGGATCGGAGGCTGACC  
AGTGTGAGGCTTGTGCCACTACAAGACTCATCTTCTGTGTGGCTCGCTGCCCCAGTGGTGTGAAGCC  
AGACCTCTCTACATGCCTATCTGGAAGTACCCGGATGAGGAGGGCATATGTCAGCCATGCCCATCAAC  
TGCACCCACTCATGTGTGGACCTGGACGAACGAGGCTGCCAGCAGAGCAGAGAGCCAGCCAGTGACAT  
TCATCATTGCAACTGTGGTGGGCGTCTGTTGTTCTGATCATAGTGGTGGTCATTGGAATCCTAATCAA  
ACGAAGGCGACAGAAGATCCGGAAGTATACCATGCGTAGGCTGCTGCAGGAGACCAGCTGGTGGAGCCG  
CTGACGCCAGTGGAGCTGTGCCAACCAGGCTCAGATGCGGATCCTAAAGGAGACAGAGCTAAGGAAGC  
TGAAGGTGCTTGGGTGAGGACCTTCGGCACTGTCTACAAGGCATCTGGATCCCAGATGGGAGAACGT  
GAAAATCCCCGTGGCCATCAAGTGTGAGGGAAAACACATCTCCTAAAGCTAACAAAGAAATCCTAGAT  
GAAGCGTACGTATGGCTGGTGTGGTTCTCCATATGTGTCCCGCTCCTGGGCATCTGCCTGACATCCA  
CAGTGCAGCTGGTGACACAGCTTATGCCCTATGGCTGCCTTCTGGACCATGTCCGAGAACACCGAGTCCG  
CTTAGGCTCCCAGGACCTGCTCAACTGGTGTGTTGAGATTGCCAAGGGGATGAGCTACCTGGAGGAAGTT  
CGGCTTGTTCACAGGGACCTAGCTGCCGAAACGTGCTAGTCAAGAGTCCAACCCAGTCAAGATTACCG  
ACTTCGGGCTGGCACGGCTGCTGGACATTGATGAGACTGAATACCATGCAGATGGGGCAAGGTGCCAT  
CAAGTGGATGGCATTGGAATCTATTCTCAGACGCGGTTACCCATCAGAGTGTGTGTGGAGCTATGGT  
GTGACTGTGTGGGAGCTGATGACCTTGGGGCCAAACCTTACGATGGGATCCCAGCTCGGGAGATCCCTG  
ATTTGTGGAGAAGGGAGAACGCCTACCTCAGCCTCCAATCTGCACCATCGACGTCTACATGATCATGGT  
CAAATGTTGGATGATTGACTCCGAATGTCGCCCCGAGATTCCGGGAGTTGGTATCAGAATTCTCCCGTATG  
GCAAGGGACCCCCAGCGCTTGTGGTATCCAGAACGAGGACTTAGGCCCTCCAGCCCCATGGACAGCA  
CCTTCTACCGTTCAGTGTGGAGGATGATGACATGGGGGAGCTGGTTCGATGCTGAAGAGTACCTGGTACC  
CCAGCAGGGATTCTTCTCCCAGACCCTGCCCTAGGTACTGGGAGCACAGCCACCCGAGACACCGCAGC  
TCGTCCGCCAGGAGTGGCGGTGGTGTGAGCTGACACTGGGCCTGGAGCCCTCGGAAGAAGAGCCCCCAGAT  
CTCCACTGGCTCCCTCCGAAGGGGCTGGCTCCGATGTGTTTGTGGTGTGACCTGGCAGTGGGGTAACCAA  
AGGACTGCAGAGCCTCTCTCCACATGACCTCAGCCCTCTACAGCGGTACAGTGGAGATCCACATTACCT  
CTGCCCCCGAGACTGATGGCTACGTTGCTCCCTGGCCTGCAGCCCCAGCCGAGTATGTGAACCAGC  
CAGAGGTTCCGGCCTCAGTCTCCCTTGACCCAGAGGCTCCTCCGCTCCCATCCGACCTGCTGGTGTAC  
TCTAGAAAGACCAAGACTCTCTCTCTGGGAAAAATGGGGTGTCAAAGACGTTTTTGCCTTTGGGGT  
GCTGTGGAGAACCCTGAATACTTAGCACCCAGAGCAGGCACTGCCTCTCAGCCCCACCTTCTCCTGCCT  
TCAGCCCAGCCTTTGACAACCTCTATTACTGGGACCAGAACTCATCGGAGCAGGGTCTCCACCAAGTAC  
CTTTGAAGGGACCCCACTGCAGAGAACCCTGAGTACCTAGGCCTGGATGTGCCAGTA

ACGCGTACGCGGCCGCTCGAG - GFP Tag - GTTTAA

**Protein Sequence:** >MG227307 representing NM\_001003817  
 Red=Cloning site Green=Tags(s)

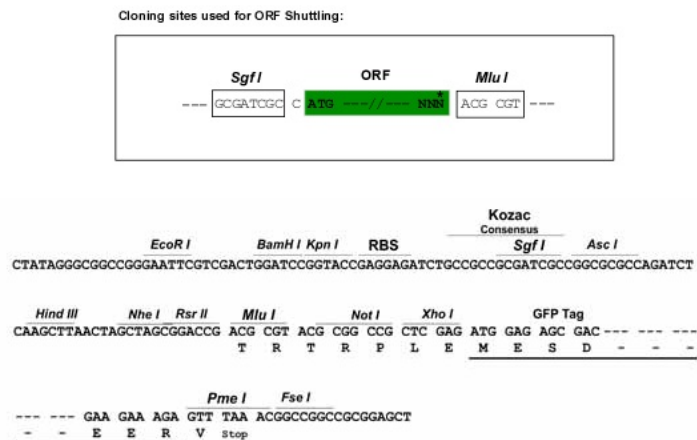
```
MELAAWCRWGFLALLSPGAAGTQVCTGTMKLRLPASPETHLDMRLHL YQGCQVVQGNLELTYLPANAS
LSFLQDIQEVQGYMLIAHNRVKHVPLQRLRIVRGTQLFEDKYALAVLDNRDPLDNVTTAAPGRTPEGLRE
LQLRSLTEILKGGVLRGNPQLCYQDMVLWKDVLKNNQLAPVMDTNRSRACPPCAPTKDNHCWGESP
EDCQILGTICTSGCARCKGRLPTDCCHEQCAAGCTGPKHSDCLACLHFNHSGICELHCPALITYNTDTF
ESMLNPEGRYTFGASCVTTCYPNYLSTEVGSC TLVCPNNQEVTAEDGTQRCEKCSKPCAGVCYGLGMEH
LRGARAITSDNIQEFAGCKKIFGSLAFLPESFDGNPSSGVAPLKPEHLQVFETLEITGYLYISAWPESF
QDLSVFQNLRVIRGRILHDGAYSLTLQGLGIHSLGLRSLRELGSGLAL IHRNTHLCFVNTVPWDQLFRNP
HQALLHSGNRPEEACGLEGLVCNSLCARGHCWGPQPTQC VNCSQFLRGQECVEECRVWVWGLPREYVRGKH
CLPCHPECPQNSSETCYGSEADQCEACAHYKDS SSCVARCPSGVKPDLSYMPIWKYPDEEGICQPCPIN
CTHSCVDLDERGCPAEQRASPVTFIIATVVGVLLFLIIVVVIGILIKRRRQKIRKYTMRRLLQETELVEP
LTPSGAVPNQAQMRILKETELRKLKVLGSGAFGT VYKGIWIPDGENVKIPVAIKVLRNTPKANKEILD
EAYVMAGVGSPPYVSRLLGICLSTVQLVTQLMPYGCLLDHVREHRGRLGSQDLLNWCVQIAGKMSYLEEV
RLVHRDLAARNVLVKSPNHVKITDFGLARLLDIDETEYHADGGKVP IKWMALESILRRRFTHQSDVWSYG
VTWELMTFGAKPYDGIPAREIPDLLEKGERLPQPP ICTIDVYIMVKCWMIDSECRPRFREL VSEFSRM
ARDPQRFVVIQNE DLGPSSPMDSTFYRSLLEDDMGELVDAEEYLVPQQGFFSPDPALGTGSTAHRHRHS
SSARSGGELTLGLEPSEEEPPRSPLAPSEGAGSDVFDGDLAVGVTKGLQSLSPHDL SPLQRYSDEPTLP
LPPETDGYVAPLACSPQPEYVNQPEVVPQSPL TPEGPPPIRPAGATLERPKT LSPGKNGVVKDFAFGG
AVENPEYLAPRAGTASQPHPSPAFSPAFDNL YYWDQNSSEQGGPPPSTFEGTPTAENPEYLGLDVVP
```

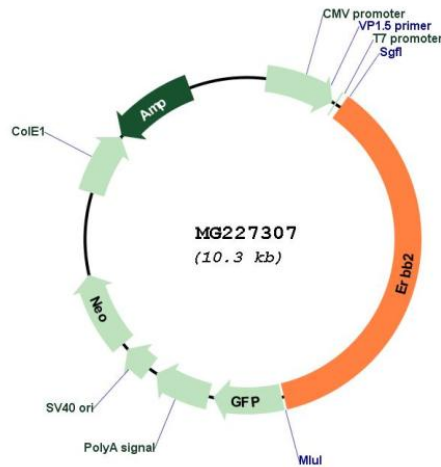
TRTRPLE - GFP Tag - V

**Restriction Sites:**

SgfI-MluI

**Cloning Scheme:**



**Plasmid Map:**


**ACCN:** NM\_001003817

**ORF Size:** 3768 bp

**OTI Disclaimer:** Due to the inherent nature of this plasmid, standard methods to replicate additional amounts of DNA in *E. coli* are highly likely to result in mutations and/or rearrangements. Therefore, OriGene does not guarantee the capability to replicate this plasmid DNA. Additional amounts of DNA can be purchased from OriGene with batch-specific, full-sequence verification at a reduced cost. Please contact our customer care team at [custsupport@origene.com](mailto:custsupport@origene.com) or by calling 301.340.3188 option 3 for pricing and delivery.

The molecular sequence of this clone aligns with the gene accession number as a point of reference only. However, individual transcript sequences of the same gene can differ through naturally occurring variations (e.g. polymorphisms), each with its own valid existence. This clone is substantially in agreement with the reference, but a complete review of all prevailing variants is recommended prior to use. [More info](#)

**OTI Annotation:** This clone was engineered to express the complete ORF with an expression tag. Expression varies depending on the nature of the gene.

**Components:** The ORF clone is ion-exchange column purified and shipped in a 2D barcoded Matrix tube containing 10ug of transfection-ready, dried plasmid DNA (reconstitute with 100 ul of water).

- Reconstitution Method:**
1. Centrifuge at 5,000xg for 5min.
  2. Carefully open the tube and add 100ul of sterile water to dissolve the DNA.
  3. Close the tube and incubate for 10 minutes at room temperature.
  4. Briefly vortex the tube and then do a quick spin (less than 5000xg) to concentrate the liquid at the bottom.
  5. Store the suspended plasmid at -20°C. The DNA is stable for at least one year from date of shipping when stored at -20°C.

RefSeq: [NM\\_001003817.1](#), [NP\\_001003817.1](#)

RefSeq Size: 4998 bp

RefSeq ORF: 3771 bp

Locus ID: 13866

UniProt ID: [P70424](#)

Cytogenetics: 11 D

**Gene Summary:** Protein tyrosine kinase that is part of several cell surface receptor complexes, but that apparently needs a coreceptor for ligand binding. Essential component of a neuregulin-receptor complex, although neuregulins do not interact with it alone. GP30 is a potential ligand for this receptor. Regulates outgrowth and stabilization of peripheral microtubules (MTs). Upon ERBB2 activation, the MEMO1-RHOA-DIAPH1 signaling pathway elicits the phosphorylation and thus the inhibition of GSK3B at cell membrane. This prevents the phosphorylation of APC and CLASP2, allowing its association with the cell membrane. In turn, membrane-bound APC allows the localization of MACF1 to the cell membrane, which is required for microtubule capture and stabilization (By similarity).[UniProtKB/Swiss-Prot Function]