

Product datasheet for **MG227278**

Tnfrsf13b (NM_021349) Mouse Tagged ORF Clone

Product data:

Product Type:	Expression Plasmids
Product Name:	Tnfrsf13b (NM_021349) Mouse Tagged ORF Clone
Tag:	TurboGFP
Symbol:	Tnfrsf13b
Synonyms:	1200009E08Rik; Taci
Mammalian Cell Selection:	Neomycin
Vector:	pCMV6-AC-GFP (PS100010)
E. coli Selection:	Ampicillin (100 ug/mL)
ORF Nucleotide Sequence:	>MG227278 representing NM_021349 Red=Cloning site Blue=ORF Green=Tags(s)

TTTTGTAATACGACTCACTATAGGGCGCCGGGAATTCGTCGACTGGATCCGGTACCGAGGAGATCTGCC
GCC**CGATCGCC**

ATGGCTATGGCATTCTGCCCAAAGATCAGTACTGGGACTCCTCAAGGAAATCCTGTGTCTCCTGTGCAC
TGACCTGCAGCCAGAGGAGCCAGCGCACCTGTACAGACTTCTGCAAATTCATCAATTGCCGAAAAGAGCA
AGGCAGGTACTACGACCATCTCTGGGGGCTGCGTCAGCTGTGACTCCACCTGCACACAGCACCCCTCAG
CAGTGTGCCCACTTCTGTGAGAAAAGGCCAGAAGCCAGGCGAACCTCCAGCCCGAGCTCGGGAGACCAC
AGGCCGGGAGGTGGAAGTCAGGTCAGACAACCTCAGGAAGGCACCAGGGATCTGAGCATGGTCCAGGATT
GAGGCTAAGTAGCGACCAGCTGACTCTCTACTGCACACTGGGGTCTGCCTCTGCCCATCTTCTGCTGT
TTCTTGGTGGCCTTGGCCTCCTTCTCAGGCGTAGAGGAGAGCCACTACCCAGCCAGCCTGCCGGGCCAC
GTGGGTACAAGCAAACCTCTCCCCACGCCACCGCCCGTGACAGAGGCTTGCGACGAGGTGACCGCGTC
ACCCAGCCTGTGGAAACGTGTAGCTTCTGCTTCCCGAGCGCAGTTCTCCCACTCAGGAGAGCGCGCCG
CGTTTCGCTCGGATACACGGCTTCGCGGGCACTGCCGCCCGCAGCCCTGTATGCGTGCAACAGTAGGCG
GCCTGGGTGTCTGCGCGCATCCACTGGGACGCTCGTCCGGCAACT

ACGCGTACGCGGCCGCTCGAG - GFP Tag - GTTTAA



[View online »](#)

Protein Sequence: >MG227278 representing NM_021349
Red=Cloning site Green=Tags(s)

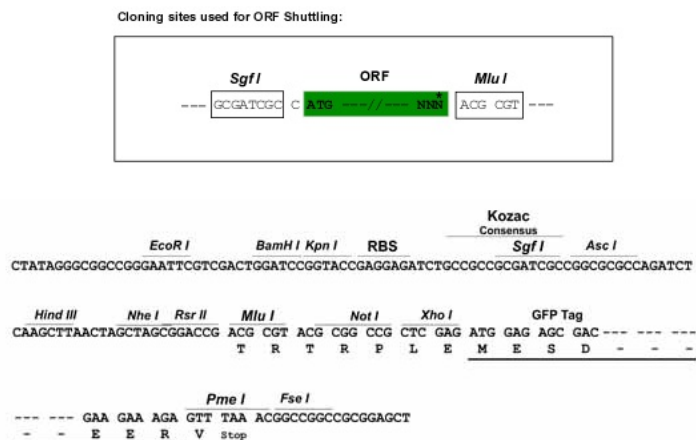
MAMAFCPKDQYWDSSRKSCVSCALTCQSQRSTCTDFCKFINCRKEQGRYYDHLLGACVSCDSTCTQHPQ
 QCAHFCEKRPRSQANLQPELGRPQAGEVEVRSDNSGRHQGSEHGPGRLRLSSDQLTLYCTLGVCLCAIFCC
 FLVALASFLLRRRGEPLPSQPAGPRGSQANSPHAHRPVTEACDEV TASPQPVETCSFCFPERSPTQESAP
 RSLGIHGFAGTAAAPQPCMRATVGGGLGVLRASTGDARPAT

TRTRPLE - GFP Tag - V

Chromatograms: https://cdn.origene.com/chromatograms/ja1697_b11.zip

Restriction Sites: SgfI-MluI

Cloning Scheme:



ACCN: NM_021349

ORF Size: 747 bp

OTI Disclaimer: The molecular sequence of this clone aligns with the gene accession number as a point of reference only. However, individual transcript sequences of the same gene can differ through naturally occurring variations (e.g. polymorphisms), each with its own valid existence. This clone is substantially in agreement with the reference, but a complete review of all prevailing variants is recommended prior to use. [More info](#)

OTI Annotation: This clone was engineered to express the complete ORF with an expression tag. Expression varies depending on the nature of the gene.

Components: The ORF clone is ion-exchange column purified and shipped in a 2D barcoded Matrix tube containing 10ug of transfection-ready, dried plasmid DNA (reconstitute with 100 ul of water).

Reconstitution Method:

1. Centrifuge at 5,000xg for 5min.
2. Carefully open the tube and add 100ul of sterile water to dissolve the DNA.
3. Close the tube and incubate for 10 minutes at room temperature.
4. Briefly vortex the tube and then do a quick spin (less than 5000xg) to concentrate the liquid at the bottom.
5. Store the suspended plasmid at -20°C. The DNA is stable for at least one year from date of shipping when stored at -20°C.

RefSeq: [NM_021349.3](#)

RefSeq Size: 750 bp

RefSeq ORF: 750 bp

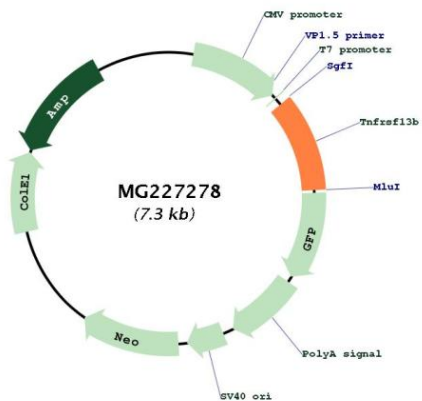
Locus ID: 57916

UniProt ID: [Q9ET35](#)

Cytogenetics: 11 B2

Gene Summary: Receptor for TNFSF13/APRIL and TNFSF13B/TALL1/BAFF/BLYS that binds both ligands with similar high affinity. Mediates calcineurin-dependent activation of NF-AT, as well as activation of NF-kappa-B and AP-1. Involved in the stimulation of B- and T-cell function and the regulation of humoral immunity (By similarity).[UniProtKB/Swiss-Prot Function]

Product images:



Circular map for MG227278