

Product datasheet for **MG227267**

Pcdh15 (NM_001142760) Mouse Tagged ORF Clone

Product data:

Product Type: Expression Plasmids
Product Name: Pcdh15 (NM_001142760) Mouse Tagged ORF Clone
Tag: TurboGFP
Symbol: Pcdh15
Synonyms: av; BB078305; ENSMUSG00000046980; Gm9815; nmf19; roda; Ush1f
Mammalian Cell Selection: Neomycin
Vector: pCMV6-AC-GFP (PS100010)
E. coli Selection: Ampicillin (100 ug/mL)
ORF Nucleotide Sequence: >MG227267 representing NM_001142760
Red=Cloning site Blue=ORF Green=Tags(s)

TTTTGTAATACGACTCACTATAGGGCGGCCGGAATTCGTCGACTGGATCCGGTACCGAGGAGATCTGCC
GCC**CGATCGCC**

ATGTTCTACAGTTTGTCTGGAAGTGTACCCCATGGGATCCTCATTGCCTCTCTTGGTAGTCA
GCTGGGGCCAGTATGACGATGATTGCAAACAGCTAGGGGAGGACCACCAGCTACTATCGTGCCATTGA
TGAAGAGAGTCGAAACGGTACAATTCTGGTGGATAACATGTTGATTAAGGGGACTGCCGGAGGACCAGAC
CCCACCATAGAGCTCTTTAAAGGACAACGTGGACTACTGGGTGTTGCTGGACCCGTTAAACAGATGC
TTTTCTGAAACAGTACCGGAAGAGTTCTGGATAGAGACCCACCAATGAACATACACTCCATTGTGGTGCA
AGTCCAGTGTGTCAACAAGAAGTTGGCACAGTTATCTATCATGAAGTACGCATCGTGGTGCGAGATCGG
AATGACAACCTCCCCACATTCAAGCATGAAAGCTACTATGCCACCGTGAATGAGCTCACTCCAGTTGGCA
CCACGATATTCACGGGGTTCTCGGGAGACAATGGAGCTACAGACATAGACGATGGCCCTAATGGACAGAT
AGAATACGTGATTCAGTACAACCCAGAAGATCCGACATCCAACGACACCTTTGAAATCCACTCATGCTG
ACTGGCAACGTGGTACTGAGGAAAAGACTCAACTATGAGGATAAGACTCGCTACTATGTCATCATCCAAG
CAAATGACCGTGCACAAAATCTGAATGAGAGGCGAACAACCACCACCCTCACAGTAGATGTTCTAGA
TGGAGTAGCCTGGGACCTATGTTTCTGCCTTGTTCTTGTGCCAAACACACGTGACTGTCGTCCTC
ACCTACCAAGCTGCCATTCTGAACTGAGGACTCCGGAAGAAGTGAACCTATTTTGGTGACACCACCTA
TCCAAGCCATTGATCAGGACCGAAACATCCAACCACCTCTGATCGACCTGGCATCCTCTACTCCATCCT
TGTCGGCACCCCTGAGGATTACCCCGCTTCTTCCATATGCATCCAGGACTGCAGAACCTACTCTCCTG
GAGCCAGTAAACAGAGACTTCCATCAAAAATTTGATTTGGTTATTAAGGCTGAGCAGGACAATGGCCACC
CACTTCTGCCTTTGCTAGTCTGCACATCGAAATACTAGACGAAAACAATCAGAGTCCATACTTCACAA
GCCAGCTATCAAGGATACATCCTGGAATCCGCCAGTGGGAGCCACCTTTCTGAGAGCTAACTTA
ACCACTCTCTGAGAATTGTAGCTCTGGACAAAGACATAGAAGACACAAAAGATCCAGAGCTCCACCTCT
TCCTGAATGACTACACCTCGGTCTTCACTGTGACACCCACTGGTATCACCCGCTACCTCACCTGCTTCA
ACCTGTGGACAGGAGGAACAGCAAACCTACACCTTTCTGATAACAGCGTTTGATGGCGTGCAAGAAAGT



GAGCCAGTCGTGGTCAATATCCGAGTGATGGATGCAAATGATAACACGCCACCTTCCCTGAAATCTCT
 ATGATGTCTATGTTTACACAGACATGAGTCCTGGGGACAGCGTCATTCAGCTGACAGCGGTAGATGCTGA
 TGAAGGCTCTAATGGGGAGATCTCTATGAAATACTGGTGGGGGCAAGGGAGACTTCGTGATCAACAAG
 ACCACAGGGCTGGTGAGCATTGCACCAGGCGTGGAGCTGATCGTGGGACAGACGTATGCGCTCACAGTGC
 AGGCTTCGGACAACGCCCCGCTGCAGAAAAGAGGCACTCCATCTGCACAGTGTACATCGAGGTGCTTCC
 TCCTAACAAACAGAGCCCTCCCCGCTTCCCGCAGCTGATGTACAGTCTGGAAGTCAGCGAGGCCATGAGG
 ATCGGTGCTATTTTAAATCTACAGGCAACTGATCGAGAGGGAGATCCAATCACATATGCCATCGAGA
 ATGGAGACCCTCAGAGAGTTTTTAAATCTTTCAGAAACCACAGGGATTCTCAGCCTAGGGAAGGCTCTAGA
 CCGCGAGAGCACAGACCCTACATCCTCATCGTCACAGCCTCAGATGGCAGACCGGATGGAACCTCAACT
 GCCACTGTGAACATAGTGGTGACGGACGTCAATGACAACGCTCCCGTGTTTCGATCCCTATCTGCCAGGA
 ACCTCTCTGTGGTGGAGGAAGAAGCCAATGCCTTTGTGGGTCAAGTCCGGGCAACAGACCAGATGCTGG
 GATAAACGGCCAAGTTCCTACAGCCTGGGGAACCTCAACAACCTCTCCGCATCACATCCAACGGGAGC
 ATTTACACAGCCGTGAAGCTGAACAGGGAAGCCAGGGACCACTATGAACTGGTTGCTGGCAACAGATG
 GAGCAGTCCACCCTCGACATTCAACTCTGACACTGTACATCAAGGTGTTGGACATTGATGATAACAGTCC
 TGTTTTTACCAATTCAACGTACACAGTTGCTGTTGAAGAGAATCTGCCAGCCGGGACCTCCTTTCTCAA
 ATAGAGGCCAAGGATGTTGACCTTGGAGCCAATGTGTCATATCGGATCAGAAAGCCAGAAGTGAAACACC
 TTTTGTGACTGCATCCATTCCTGAGGAAATTTGCTCTTCTGAGGAGTTGGATTATGAGGCCCTTCCGGA
 CCAGGAGGCAAGCATCACATTCTTGGTGGAGGCCCTTTCACATTTATGGGACTATGCCACCTGGTATAGCA
 ACAGTCACGGTAATTGTGAAGGACATGAATGACTACCCTCCAGTGTTCAGCAAACGCATCTACAAGGGGA
 TGGTGGCTCCAGATGCAGTCAAGGGGACACCAATCACCACCGTTTATGCTGAAGATGCGGACCCACCTGG
 GATGCCTGCAAGTAGGGTGAAGTATCGAGTGGACGACGTGCAAGTTCATACCCAGCCAGTATTTTTGAT
 GTAGAGGAAGATTCTGGAAGAGTAGTAACCCGCGTCAATCTTAAATGAAGAGCCTACTACGATTTTCAAGC
 TGGTGGTTGTGGCTTTGATGACGGGCAACCTGTGATGTCAGCAGTGCACGGTGAAGAAATCTTGTCTT
 ACATCCTGGAGAGATCCACGCTTCAACCAAGAGGAATACAGACCTCCTCCTGTAAGTGAAGTTCGGGCC
 AGAGGGACTGTAGTTGGTGCATTTCTGCTGCTGCCATTAATCAGAGCATCGTGTACTCCATTGTGGCAG
 GAAATGAGGAAGACAAGTTTGAATCAACAATGCACTGGGGTCACTATGTGAATTACCATTGGATTA
 CGAGACAAGGACCAGCTATGTGCTCCGGGTACAAGCAGATTCTCTGGAAGTGGTCTTGGCAATCTCCGA
 GTCCCTTCAAAAAGCAATACAGCTAAGGTGTACATTGAGATTGAGATGAAAACGATCACCCCCAGTGT
 TCCAGAAGAAATCTACATTGGAGGTGTGTCTGAAGACGCAAGGATGTTCCGCATCTGTGCTCAGAGTGAA
 GGCCACCAGACAGGGACACGGTAATTACAGTGCATGGCCTACCGGCTCATCATACCGCCGATTAAGAG
 GGCAAAGAGGGGTTTGTGGTGGAAACATACACAGGTCTCATCAAGACAGCCATGCTCTTCCACAATATGA
 GAAGATCTACTTCAAGTTTCAAGTGATTGCAACTGACGACTACGGGAAGGGGTTGAGCGGGAAAGCAGA
 CGTACTGGTCTCCGTGGTCAATCAACTGGATATGCAGGTCAATGTCTCCAATGTGCCCCCTACACTAGT
 GAAAAGAAGATAGAAGACCTTACAGAGATTTTGGATCGCTACGTTTCAGGAGCAAATTCCTGGTGCCAAGG
 TTGTGGTGGAGTCCATAGGTGCCCGTCGCCATGGAGACGCTACTCCCTAGAAGACTATAGCAAGTGCGA
 CCTGACTGTCTATGCCATCGACCCGACAGCAACAGAGCCATCGACAGAAATGAGCTTTTTAAGTTCTGT
 GACGGCAAACCTGCTCGATATCAATAAAGACTTCCAGCCGATTACGGGGAAGGAGGGCGCATTCTGGAGA
 TTCGGACACCTGAGGCAGTGACGAGCATCAAGAAGCGAGGAGAAAGCTTGGGTACACAGAAGGGGCCTT
 GCTGGCCTTGGCCTTATCATCATCTCTGTTGCATCCCAGCCATCTTGGTCTTAGTAAAGTACCGA
 CAGTTTAAAGTACGCCAGGCTGAGTGCACGAAGACCGCAAGAATTCAGTCTGCTATGCCTGACGCAAGC
 CTGCAGCTCCTGTACCAGCTGCGCCTGCGCCGCCCGCCCGCCACCACCACCAGGAGCACATCT
 CTATGAAGAAGTGGGAGAGAGCGCAATGCATAAGTATGAGATGCCCCAGTATGGAAGTCGCGCTGACTG
 CTGCCACCTGCTGGACAGGAGGAATACGGCGAAGTCATTGGTGAAGCTGAAGAGGAATAGAAGAAGAAG
 AGTGGGCAAGAAAAGAATGATCAAGTTGGTGGTTCGATCGGGAGTATGAGAGCAGCTCACCTGGGGAAGA
 CAGCGCTCCTGAGTCGCAGAGAAGCAGAACTCACAAAGCCAGTGGCCGACGCAATGTCAACGGCAACATC
 TACATTGCGCAGAATGGTCCGTGGTGAAGAACACGCCGTGCTGCGTGCATGATAACTTGAAGGTGCCCT
 CCCCTGGGTTGCTTGGGAGGCATCTGAAGAAATAGACACATTGGCAGGGACACGTGAAGAGAATGTGCC
 CCTGAACACACTGTTCAAGGGGCCATTTCCACAGAGAAAGCGAAAAGAACCCTCACTGCTCAGGTTT
 GCCCGTGCCTGGTGGTGGCTGAGCACTCGGCAGTGAAGCCATCAGGGACCAGGCTGAAACACACAGCTG
 AGCAGGAGTCCATGGTAGACAGTAGGCTCTCCAGAGAGTCGATGGAATTCACCGGTGACAGCGGCCATC
 AGATGAGGAGGAGCTCTGGATGGTCCGTGGAACAGCCTCCACATACCAATGACAAAACCT

ACGCGTACGCGGCCGCTCGAG - GFP Tag - GTTTAA

Protein Sequence:

>MG227267 representing NM_001142760
 Red=Cloning site Green=Tags(s)

MFLQFAVWKCLPHGILIASLLVSWGQYDDDKLARGGPPATIVAIDEE SRNGTILVDNMLIKGTAGGPD
 PTIELSLKDNVDYWLLDPVKQMLFLNSTGRVLRDPPMNIHSIVVQVQCYNKKVGTVIYHEVRIVVRDR
 NDNSPFKHESYATVNELTPVGTITFTGFSGDNGATDIDDGPNQIEYVIQYNPEDPTSNDTFEIPLML
 TGNVVLKRLNLYEDKTRYVYIIQANDRAQNLNERRTTTTLTVDVLGDGDLGPMFLPCVLPNTRDCRPL
 TYQAAIPELRTPEELNPILVTPPIQAIDQDRNIQPPSDRPGILYSILVGTPEDYPRFFHMHPRTAELTLL
 EPVNRDFHQKFDLVIAEQDNGHPLPAFASLHIEILDENNQSPYFTMP SYQGYILESAPVGATISESLNL
 TTPLRIVALDKDIEDTKDPELHLFLNDYTSVFTVTPTGITRYL TLLQPDVREEQQTFTFLITAFDGVQES
 EPVVVNI RVM DANDNTPTFPEISYDVVYVYDMSPGDSVIQLTAVDADEGSNGEISYEILVGGKGFVINK
 TTGLVSIAPGVELIVGQTYALTQASDNAPPAERRHSICTVYIEVLPPNNQSPPRFPQLMYSLEVSEAMR
 IGAILLNLQATDREGDPIYAIENGDPRQVFNLSETTGILSLGKALDRESTDRIYILIVTASDGRPDGTST
 ATVNIIVTDVNDNAPVDFPYLPRNLSVVEEENAFVGVQRATDPDAGINGQVHYSLGNFNFLFRITSNGS
 IYTAVKLNREARDHYELVVVATDGAVHPRHSTLTLYIKVLDIDDNSPVFTNSTYTVVVEENLPAGTSFLQ
 IEAKDVDL GANVSYRIRSPVKHLFALHPFTGELSLRSLDYEAFPDQEASITFLVEAFDIYGTMPGIA
 TVTVIVKDMNDYPPVFSKRIYKGMVAPDAVKGTPITTVYAEDADPPGMPASRVRYRVDVQFPYPASIFD
 VEEDSGRVVTRVNLNEEPTTIFKLVVAFDDGEPVMSSATVRILVLPGEIPRFQEEYRPPVSELA
 RGTVVGVISAAAINQSI VYSIVAGNEEDKFGINNVTVGIYVNSPLDYETRTSYVLRVQADSLEVLANLR
 VPSKSNTAKVYIEIQDENDHPPVFQKKFYIGGVSEDA RMFASVLRVKATDRDTGNYSAMAYRLIIPPIKE
 GKEGFVVEYTYTGLIKTAML FHNMRRSYFKFQVIATDDYKGLSGKADVLVSVVNQLDMQVIVSNVPTLV
 EKKIEDLTEILDRYVQEIQPGAKVVVESIGARRHGDAYSLEDYSKCDLTVY AIDPQTNRAIDRNELFKFL
 DGKLLDINKDFQPYGEGGRILEIRTPEAVTSIKKRGESLGYTEGALLALAFIIILCCIPAILVVLVSYR
 QFKVQAECTKTARIQSAMPAKPAAPVPAAPPPPPPPPPGAHL YEELGESAMHKYEMPQYGSRRRL
 LPPAQEEYGEVIGEAE EEEEEEWARKRMIKL VVDREYESSSPGEDSAPESQRSRTHKPSGRSNVNGNI
 YIAQNGSVVRRTRACVADNLKVPSPGLLGRHLKLDLTLAGTREENVLNTL FKGPFSTEKAKRTPTLVTF
 APCPVVAEHSVAVKPSGTRLKHTAEQESMVD SRLSRESMEFHGDSAPSDEEELWMPWNLSLHIPMTKL

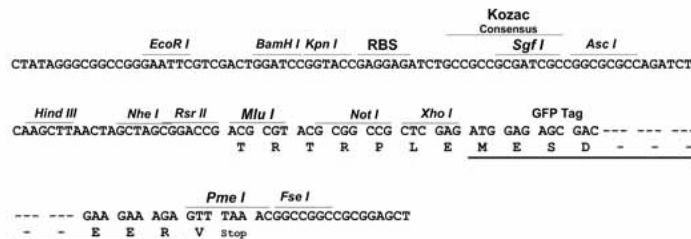
TRTRPLE - GFP Tag - V

Restriction Sites:

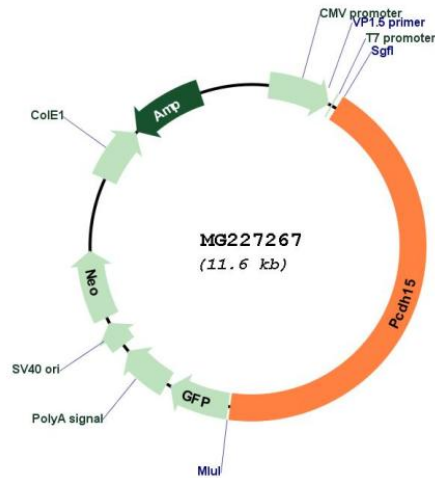
Sgfl-MluI

Cloning Scheme:

Cloning sites used for ORF Shutting:



Plasmid Map:



ACCN: NM_001142760

ORF Size: 5031 bp

OTI Disclaimer: The molecular sequence of this clone aligns with the gene accession number as a point of reference only. However, individual transcript sequences of the same gene can differ through naturally occurring variations (e.g. polymorphisms), each with its own valid existence. This clone is substantially in agreement with the reference, but a complete review of all prevailing variants is recommended prior to use. [More info](#)

OTI Annotation: This clone was engineered to express the complete ORF with an expression tag. Expression varies depending on the nature of the gene.

Components: The ORF clone is ion-exchange column purified and shipped in a 2D barcoded Matrix tube containing 10ug of transfection-ready, dried plasmid DNA (reconstitute with 100 ul of water).

Reconstitution Method:

1. Centrifuge at 5,000xg for 5min.
2. Carefully open the tube and add 100ul of sterile water to dissolve the DNA.
3. Close the tube and incubate for 10 minutes at room temperature.
4. Briefly vortex the tube and then do a quick spin (less than 5000xg) to concentrate the liquid at the bottom.
5. Store the suspended plasmid at -20°C. The DNA is stable for at least one year from date of shipping when stored at -20°C.

RefSeq: [NM_001142760.1](#), [NP_001136232.1](#)

RefSeq Size: 9135 bp

RefSeq ORF: 5034 bp

Locus ID: 11994

UniProt ID: [Q99P1](#)

Cytogenetics: 10 37.43 cM

Gene Summary: Calcium-dependent cell-adhesion protein. Required for inner ear neuroepithelial cell elaboration and cochlear function. Probably involved in the maintenance of normal retinal function.[UniProtKB/Swiss-Prot Function]