

## Product datasheet for **MG227243**

### **Ccr7 (NM\_007719) Mouse Tagged ORF Clone**

#### Product data:

Product Type:	Expression Plasmids
Product Name:	Ccr7 (NM_007719) Mouse Tagged ORF Clone
Tag:	TurboGFP
Symbol:	Ccr7
Synonyms:	CC-CKR-7; CCR-7; CD197; Cdw197; Cmkbr7; EBI1; Ebi1h
Mammalian Cell Selection:	Neomycin
Vector:	pCMV6-AC-GFP (PS100010)
E. coli Selection:	Ampicillin (100 ug/mL)
ORF Nucleotide Sequence:	>MG227243 representing NM_007719 Red=Cloning site Blue=ORF Green=Tags(s)

TTTTGTAATACGACTCACTATAGGGCGGCCGGAATTCGTCGACTGGATCCGGTACCGAGGAGATCTGCC  
GCC**CGATCGCC**

ATGGACCCAGGAAACCCAGGAAAACGTGCTGGTGGTGGCTCTCCTTGTCAATTTCCAGGTGTGCTTCT  
GCCAAGATGAGGTCACCGATGACTACATCGGCGAGAATACCACGGTGGACTACACCCTGTACGAGTCGGT  
GTGCTTCAAGAAGGATGTGCGGAACTTTAAGGCCTGGTTCCTGCCTCATGTATTCTGCATCTGCTTC  
GTGGCCTGCTCGCAACGGGCTGGTGATACTGACGTACATCTATTTCAAGAGGCTCAAGACCATGACGG  
ATACCTACCTGCTCAACCTGGCCGTGGCAGACATCCTTTTCTCCTAATTCTTCCCTTCTGGCCCTACAG  
CGAAGCCAAGTCCTGGATCTTTGGCGTCTACCTGTGTAAGGGCATCTTTGGCATCTATAAGTTAAGCTTC  
TTCAGCGGGATGCTGCTGCTCCTATGCATCAGCATTGACCGCTACGTAGCCATCGTCCAGGCCGTGTCGG  
CTCATCGCCACCGCGCCCGCTGCTTCTCATCAGCAAGCTGTCCTGTGTGGGCATCTGGATGCTGGCCCT  
CTTCTCTCCATCCCGGAGCTGCTACAGCGGCTCCAGAAGAAGCAGCGGCGAGGACACGCTGAGATGC  
TCACTGGTCAGTGCCCAAGTGGAGGCTTGATCACCATCCAAGTGGCCAGATGGTTTTTGGGTTCTTAG  
TGCCTATGCTGGCTATGAGTTTCTGCTACCTCATTATCATCCGTACCTTGGCTCCAGGCACGCAACTTGA  
GCGGAACAAGGCCATCAAGGTGATCATTGCCGTGGTGGTAGTCTTCATAGTCTTCCAGCTGCCCTACAAT  
GGGTGGTCTGGCTCAGACGGTGGCCAACTTCAACATCAACATAGCAGCTGCGAAACCAGCAAGCAGC  
TCAACATTGCCTATGACGTACCTACAGCCTGGCCTCCGCTCCGCTGCTGGTCAACCCTTTCTTGTATGC  
CTTCATCGGCGTCAAGTTCGCGACGACCTCTTCAAGCTCTTCAAGGACTTGGGCTGCTCAGCCAGGAA  
CGGCTCCGGCACTGGTCTTCTGCGGCATGTACGGAACGCTCGGTGAGCATGGAGCGGAGACCACCA  
CAACCTTCTCCCG

AGCGGACCGACGCGTACGCGGCCGCTCGAG - GFP Tag - GTTTAA



[View online »](#)

**Protein Sequence:** >MG227243 representing NM\_007719  
Red=Cloning site Green=Tags(s)

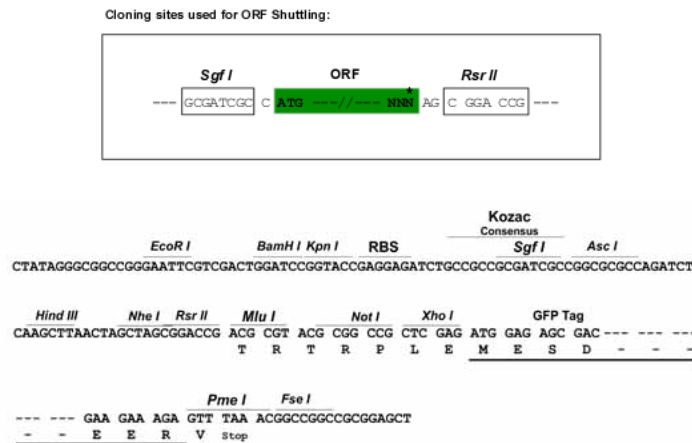
MDPGKPRKNVLVALLVIFQVFCQDEVTDYIGENTTVDYTLYESVCFKKDVRNFKAWFLPLMYSVICF  
 VGLLGNGLVILTYIYFKRLKMTDTYLLNLAVADILFLLILPFWAYSEAKSWIFGVYLCCKGIFGIYKLSF  
 FSGMLLLLCISIDRYVAIVQAVSAHRHRARVLLISKLSVGIWMLALFLSIPELLYSGLQKNSGEDTLRC  
 SLVSAQVEALITIQVAQVMVFGFLVPLAMSFICYLIIIRTLLQARNFERNKAIKVIIAVVVVIVFQLPYN  
 GVVLAQTVANFNITNSSCETSKQLNIAVDYTYSLASVRCCVNPFLYAFIGVKFRSDLFKLFDLGLCSQE  
 RLRHWSSCRHVRNASVSMEAETTTTFSP

SGPTRRRLE - GFP Tag - V

**Chromatograms:** [https://cdn.origene.com/chromatograms/ja1799\\_f03.zip](https://cdn.origene.com/chromatograms/ja1799_f03.zip)

**Restriction Sites:** SgfI-RsrII

**Cloning Scheme:**



**ACCN:** NM\_007719

**ORF Size:** 1134 bp

**OTI Disclaimer:** The molecular sequence of this clone aligns with the gene accession number as a point of reference only. However, individual transcript sequences of the same gene can differ through naturally occurring variations (e.g. polymorphisms), each with its own valid existence. This clone is substantially in agreement with the reference, but a complete review of all prevailing variants is recommended prior to use. [More info](#)

**OTI Annotation:** This clone was engineered to express the complete ORF with an expression tag. Expression varies depending on the nature of the gene.

**Components:** The ORF clone is ion-exchange column purified and shipped in a 2D barcoded Matrix tube containing 10ug of transfection-ready, dried plasmid DNA (reconstitute with 100 ul of water).

**Reconstitution Method:**

1. Centrifuge at 5,000xg for 5min.
2. Carefully open the tube and add 100ul of sterile water to dissolve the DNA.
3. Close the tube and incubate for 10 minutes at room temperature.
4. Briefly vortex the tube and then do a quick spin (less than 5000xg) to concentrate the liquid at the bottom.
5. Store the suspended plasmid at -20°C. The DNA is stable for at least one year from date of shipping when stored at -20°C.

**RefSeq:** [NM\\_007719.2](#), [NP\\_031745.2](#)

**RefSeq Size:** 1975 bp

**RefSeq ORF:** 1137 bp

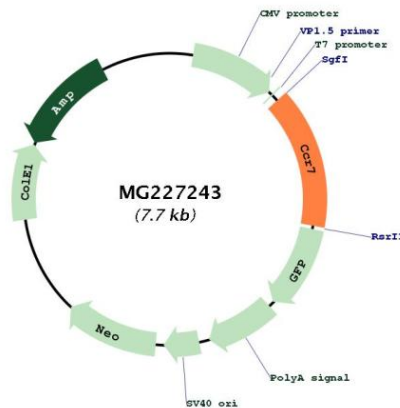
**Locus ID:** 12775

**UniProt ID:** [P47774](#)

**Cytogenetics:** 11 D

**Gene Summary:** Receptor for the MIP-3-beta chemokine.[UniProtKB/Swiss-Prot Function]

**Product images:**



Circular map for MG227243