

## Product datasheet for **MG227213**

### Prf1 (NM\_011073) Mouse Tagged ORF Clone

#### Product data:

Product Type:	Expression Plasmids
Product Name:	Prf1 (NM_011073) Mouse Tagged ORF Clone
Tag:	TurboGFP
Symbol:	Prf1
Synonyms:	Pfn; Pfp; Prf-1
Mammalian Cell Selection:	Neomycin
Vector:	pCMV6-AC-GFP (PS100010)
E. coli Selection:	Ampicillin (100 ug/mL)



[View online »](#)

**ORF Nucleotide Sequence:**

>MG227213 representing NM\_011073  
 Red=Cloning site Blue=ORF Green=Tags(s)

TTTTGTAATACGACTCACTATAGGGCGGCCGGGAATTCGTCGACTGGATCCGGTACCGAGGAGATCTGCC  
 GCC**CGGATCGCC**

ATGGCCACGTGCCTGTTCTCTGGGCCTTTTCTGCTGCTGCCACGACCTGTCCCTGCTCCCTGCTACA  
 CTGCCACTCGGTGAGAATGCAAGCAGAAGCACAAGTTCGTGCCAGGTGTATGGATGGCTGGGGAAGGCAT  
 GGATGTGACTACCTCCGCCGCTCCGGCTCCTTCCAGTGAACACACAGAGGTTCTGAGGCCTGACCGC  
 ACCTGCACCTCTGTAATAAATCCCTAATGAGAGACGCCACACAGCGCCTACCTGTGGCAATCACCCACT  
 GGCGGCTCACAGCTCACACTGCCAGCGTAATGTGGCCGACGCAAGGTCCACTCCACGGAGGGTGTGGC  
 CCGGGAGGCAGCTGCTAATCAATAACGACTGGCGTGTGGGGCTGGATGTGAACCTAGGCCAGAGGCA  
 AACATGCGCGCTCCGTGGCTGGCTCCACTCCAAGGTAGCCAATTTTGCAGCTGAGAAGACCTATCAGG  
 ACCAGTACAATTTAATAGCGACACAGTAGAGTGTGCATGTACAGTTTTCGCTGGTACAAAACTCC  
 ACTCCACCTTGACTTCAAAAAGGCGCTCAGAGCCTCCCCGCACTTTAACAGTCCACAGAGCATGCT  
 TACCACAGGCTCATCTCCTCTATGGCACGCATTTATACGGCTGTGGACTCGGTGGCCGCATCTCGG  
 TCCTTACAGCCCTGCGTACCTGTGACTGACCCGAATGGGCTCACAGCTGATGAGGTAGGAGACTGCCT  
 GAACGTGGAGGCCAGGTGAGCATCGGTGCCAAGCCAGCGTCTCCAGTGAATACAAAGCTTGTGAGGAG  
 AAGAAGAAACAGCACAAAATGGCCACCTTTCCACCAGACCTACCGTGAGCGTCACGTCGAAGTACTTG  
 GTGGCCCTCTGGACTCCACGCATGATCTGCTCTTCGGGAACCAAGCTACACCAGAGCAGTTCTCAACCTG  
 GACAGCCTCACTGCCAGCAACCCTGGTCTGGTGGACTACAGCCTGGAGCCCTGCACACATTACTGGAA  
 GAACAGAACCCGAAGCGGGAGGCTCTGAGACAGGCTATCAGCCATTATATAATGAGCAGAGCCCGGTGCC  
 AGAAGTGTAGCAGGCCCTGCAGGTGAGCCAGCATAAGAGTAGCCATGATTCATGCCAGTGTAGTGCCA  
 GGATTCAAAGGTCACCAACCAGGACTGCTGCCACGACAGAGGGGCTTGGCCATTTGGTGGTAAGCAAT  
 TCCGGGCGAGAATCTGTGGGAGACTACACCACAGCTACTGATGCCTACCTAAAGGTCTTCTTTGGTG  
 GCCAGGAGTTCAGGACCGGTGCTGTGGAAACAATAACAATCCCCGGTGGACTGACAAGATGGACTTTGA  
 GAATGTGCTCCTGTCCACAGGGGACCCCTCAGGGTGCAGGTCTGGGATGCCGACTACGGCTGGGATGAT  
 GACCTTCTGGTCTTGTGACAGGTCTCCCACTCTGGTTCCATGAGGTGACATGTGAGCTAAACCAGC  
 GCAGGGTGAATCTCCTACCATGCCAAGTGTCTGCCCATCTCACTGGAGGGACCTGCCTGGAGTATGC  
 CCCCCAGGGCTTCTGGGAGATCTCCAGGAAACCGCAGTGGGGCTGTGTGG

**ACGCGTACGCGGCCGCTCGAG** – GFP Tag – GTTTAA

**Protein Sequence:**

>MG227213 representing NM\_011073  
 Red=Cloning site Green=Tags(s)

MATCLFLLGLFLLLPRPVPAPCYTATRSECKQKHKFPVGVWMAGEGMDVTTLRRSGSFPVNTQRFRLRPDR  
 TCTLCKNSLMRDATQRLPVAITHWRPHSSHQQRNVAAAKVHSTEGVAREAAANINNDWRVGLDVNPRPEA  
 NMRASVAGSHSKVANFAAEKTYQDQYFNNSDTVECRMYSFRLVQKPPHLHDFKALRALPRNFNSSTEHA  
 YHRLISSYGTHFITAVDLGGRISVLTALRQCQLTLNGLTADEVDCLNVEAQVSIQAQASVSSEYKACEE  
 KKKQHKMATSFHQTYRERHVEVLGGPLDSTHDLFGNQATPEQFSTWTASLPSNPLVDYSLEPLHTLLE  
 EQNPKREALRQAISHYIMSRARWQNCSPCRSGQHKSSHDSQCCEQDSKVTNQDCCPRQRGLAHLVVSN  
 FRAEHLWGDYTTATDAYLKVFFGGQEFRTGVVWNNNPRWTDKMDFENVLLSTGGPLRVQVWDADYGWDD  
 DLLGSCDRSPHSGFHEVTCELNHGRVKFSYHAKCLPHLTGGTCLYAPQGLLDGPPGNRSGAVW

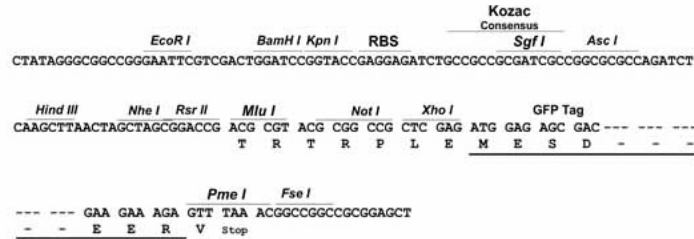
**TRTRPLE** – GFP Tag – V

**Restriction Sites:**

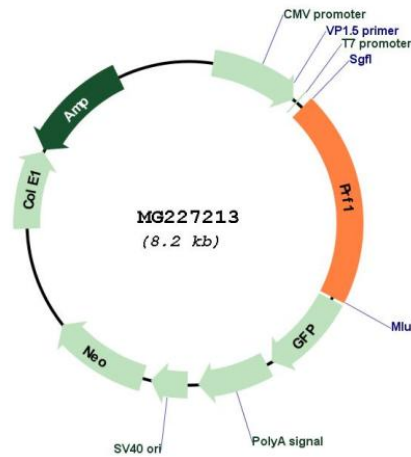
Sgfl-MluI

Cloning Scheme:

Cloning sites used for ORF Shutting:



Plasmid Map:



<b>ACCN:</b>	NM_011073
<b>ORF Size:</b>	1662 bp
<b>OTI Disclaimer:</b>	<p>Due to the inherent nature of this plasmid, standard methods to replicate additional amounts of DNA in E. coli are highly likely to result in mutations and/or rearrangements. Therefore, OriGene does not guarantee the capability to replicate this plasmid DNA. Additional amounts of DNA can be purchased from OriGene with batch-specific, full-sequence verification at a reduced cost. Please contact our customer care team at <a href="mailto:custsupport@origene.com">custsupport@origene.com</a> or by calling 301.340.3188 option 3 for pricing and delivery.</p> <p>The molecular sequence of this clone aligns with the gene accession number as a point of reference only. However, individual transcript sequences of the same gene can differ through naturally occurring variations (e.g. polymorphisms), each with its own valid existence. This clone is substantially in agreement with the reference, but a complete review of all prevailing variants is recommended prior to use. <a href="#">More info</a></p>
<b>OTI Annotation:</b>	This clone was engineered to express the complete ORF with an expression tag. Expression varies depending on the nature of the gene.
<b>Components:</b>	The ORF clone is ion-exchange column purified and shipped in a 2D barcoded Matrix tube containing 10ug of transfection-ready, dried plasmid DNA (reconstitute with 100 ul of water).
<b>Reconstitution Method:</b>	<ol style="list-style-type: none"> <li>1. Centrifuge at 5,000xg for 5min.</li> <li>2. Carefully open the tube and add 100ul of sterile water to dissolve the DNA.</li> <li>3. Close the tube and incubate for 10 minutes at room temperature.</li> <li>4. Briefly vortex the tube and then do a quick spin (less than 5000xg) to concentrate the liquid at the bottom.</li> <li>5. Store the suspended plasmid at -20°C. The DNA is stable for at least one year from date of shipping when stored at -20°C.</li> </ol>
<b>RefSeq:</b>	<a href="#">NM_011073.3</a> , <a href="#">NP_035203.3</a>
<b>RefSeq Size:</b>	2054 bp
<b>RefSeq ORF:</b>	1665 bp
<b>Locus ID:</b>	18646
<b>UniProt ID:</b>	<a href="#">P10820</a>
<b>Cytogenetics:</b>	10 32.18 cM
<b>Gene Summary:</b>	Plays a key role in secretory granule-dependent cell death, and in defense against virus-infected or neoplastic cells. Can insert into the membrane of target cells in its calcium-bound form, oligomerize and form large pores. Promotes cytolysis and apoptosis of target cells by facilitating the uptake of cytotoxic granzymes.[UniProtKB/Swiss-Prot Function]