

Product datasheet for **MG227209**

Pcdh15 (NM_001142742) Mouse Tagged ORF Clone

Product data:

Product Type:	Expression Plasmids
Product Name:	Pcdh15 (NM_001142742) Mouse Tagged ORF Clone
Tag:	TurboGFP
Symbol:	Pcdh15
Synonyms:	av; BB078305; ENSMUSG00000046980; Gm9815; nmf19; roda; Ush1f
Mammalian Cell Selection:	Neomycin
Vector:	pCMV6-AC-GFP (PS100010)
E. coli Selection:	Ampicillin (100 ug/mL)
ORF Nucleotide Sequence:	>MG227209 representing NM_001142742 Red=Cloning site Blue=ORF Green=Tags(s)

TTTTGTAATACGACTCACTATAGGGCGGCCGGAATTCGTCGACTGGATCCGGTACCGAGGAGATCTGCC
GCC**CGATCGCC**

ATGTTCTACAGTTTGCTGTCTGGAAGTGTACCCCATGGGATCCTCATTGCCTCTCTTGGTAGTCA
GCTGGGGCCAGTATGACGATGACTGGCAATACGAGGATTGCAAACAGCTAGGGGAGGACCACCAGCTAC
TATCGTGGCCATTGATGAAGAGAGTCGAAACGGTACAATTCTGGTGGATAACATGTTGATTAAGGGGACT
GCCGGAGGACCAGACCCACCATAGAGCTCTCTTAAAGGACAACGTGGACTACTGGGTGTTGCTGGACC
CCGTAAACAGATGCTTTTCTGAACAGTACCGGAAGAGTTCTGGATAGAGACCCACCAATGAACATACA
CTCCATTGTGGTCAAGTCCAGTGTGTCAACAAGAAGGTTGGCACAGTTATCTATCATGAAGTACGCATC
GTGGTGGGAGATCGGAATGACAACCTCCCCACATTCAAGCATGAAAGCTACTATGCCACCGTGAATGAGC
TCACTCCAGTTGGCACCACGATATTCACGGGGTCTCGGGAGACAATGGAGCTACAGACATAGACGATGG
CCCTAATGGACAGATAGAATACGTGATTCACTACAACCCAGAAGATCCGACATCCAACGACACCTTTGAA
ATTCCACTCATGCTGACTGGCAACGTGGTACTGAGGAAAAGACTCAACTATGAGGATAAGACTCGCTACT
ATGTATCATCCAAGCAAATGACCGTGCACAAAATCTGAATGAGAGGGGAACAACCACCACCCTCAC
AGTAGATGTTCTAGATGGAGATGACCTGGGACCTATGTTTCTGCCTTGTTCTTGTGCCAACACACGT
GACTGTGTCCTACTCACCTACCAAGCTGCCATTCTGAACTGAGGACTCCGGAAGAATGAACCTATTT
TGGTGACACCACCTATCCAAGCATTGATCAGGACCGAAACATCCAACCACCTCTGATCGACCTGGCAT
CCTCTACTCCATCCTTGTGCGCACCCCTGAGGATTACCCCGCTTCTTCCATATGCATCCAGGACTGCA
GAACTCACTCTCTGGAGCCAGTAAACAGAGACTTCCATCAAAAATTTGATTTGGTTATTAAGGCTGAGC
AGGACAAATGGCCACCCACTTCTGCCTTTGCTAGTCTGCACATCGAAATACTAGACGAAAACAATCAGAG
TCCATACTTACAATGCCAGCTATCAAGGATACATCCTGGAATCCGCCCCAGTGGGAGCCACCATTTCT
GAGAGCCTAAACTTAACCACTCCTCTGAGAATTGTAGCTCTGGACAAAGACATAGAAGACGTGCCACCTG
GTGGAGTTCCTACAAAAGATCCAGAGCTCCACCTTCTCCTGAATGACTACACCTCGGTCTTCACTGTGAC
ACCCACTGGTATCACCCGTACCTACCCTGCTTCAACCTGTGGACAGGGAGGAACGAAACCTACACC



[View online >](#)

TTTCTGATAACAGCGTTTGATGGCGTGCAAGAAAGTGAGCCAGTCGTGGTCAATATCCGAGTGATGGATG
CAAATGATAACACGCCACCTTCCTGAAATCTCCTATGATGTCTATGTTTACACAGACATGAGTCTGG
GGACAGCGTCATTCAGCTGACAGCGGTAGATGCTGATGAAGGCTCTAATGGGGAGATCTCCTATGAAATA
CTGGTGGGGGCAAGGGAGACTTCGTGATCAACAAGACCACAGGGCTGGTGGAGCATTGCACCAGGCGTGG
AGCTGATCGTGGGACAGACGTAATGCGCTCACAGTGCAGGCTTCGGACAACGCCCGCCTGCAGAAAGAAG
GCACTCCATCTGCACAGTGTACATCGAGGTGCTTCCTCCTAACACCAGAGCCCTCCCGCTTCCCGCAG
CTGATGTACAGTCTGGAAGTCAAGGAGCCATGAGGATCGGTGCTATTTTTATTAATCTACAGGCAACTG
ATCGAGAGGGAGATCCAATCACATATGCCATCGAGAATGGAGACCCTCAGAGAGTTTTTAATCTTTCAGA
AACACAGGGATTCTCAGCCTAGGGAAGGCTCTAGACCAGGAGAGCACAGACCCTACATCCTCATCGTC
ACAGCCTCAGATGGCAGACCCGATGGAACCTCAACTGCCACTGTGAACATAGTGGTGACGGACGTCAATG
ACAACGCTCCCGTGTTCGATCCCTATCTGCCAGGAACCTCTCTGTGGTGGAGGAAGAAGCCAATGCCTT
TGTGGGTCAAGTCCGGCAACAGACCCAGATGCTGGATAAACGGCCAAGTTCCTACAGCCTGGGGAAC
TTCAACAACCTCTCCGCATCACATCCAACGGGAGCATTACACAGCCGTGAAGCTGAACAGGGAAGCCA
GGGACCACTATGAACTGGTTGCTGTGGCAACAGATGGAGCAGTCCACCCTCGACATTCAACTCTGACACT
GTACATCAAGGTGTTGGACATTGATGATAACAGTCTGTTTTTACCAATCAACGTACACAGTGTGCGTT
GAAGAGAACTCGCCAGCCGGGACCTCCTTCTTCAATAGAGGCCAAGGATGTTGACCTGGAGCCAATG
TGTATATCGGATCAGAAGCCCAGAAGTAAACACCTTTTTGACTGCATCCATTCACTGGAGAATTGTC
TCTTCTGAGGAGTTGGATTATGAGGCCTTCCGGACCAGGAGGCAAGCATCACATTCTTGGTGGAGGCC
TTTGACATTTATGGGACTATGCCACCTGGTATAGCAACAGTCAAGGTAATTGGAAGGACATGAATGACT
ACCCTCCAGTGTTAGCAAAACGCATCTACAAGGGGATGGTGGCTCCAGATGCAGTCAAGGGGACACCAAT
CACCACCGTTTATGCTGAAGATGCGGACCCACCTGGGATGCTGCAAGTGGGTGAGGTATCGAGTGGAC
GACGTGCAGTTCCATACCCAGCCAGTATTTTTGATGTAGAGGAAGATTCTGGAAGAGTAGTAACCCGCG
TCAATCTTAATGAAGAGCCTACTACGATTTTCAAGTGGTGGTGTGGCTTTTGTGATGAGCGGCAACTGT
GATGTCCAGCAGTGCACGGTGAGAATCTGTCTTACATCCTGGAGAGATCCCACGCTTACCCAAAGAG
GAATACAGACCTCCTCCTGTAAGTGAGCTTGGCGCCAGAGGGACTGTAGTTGGTGCATTCTGCTGCTG
CCATTAATCAGAGCATCGTGTACTCCATTGTGGCAGGAAATGAGGAAGACAAGTTTGAATCAACAATGT
CACTGGGGTCACTATGTGAATTCACCATGGATTACGAGACAAGGACCAGCTATGTGCTCCGGGTACAA
GCAGATTCTGGAAGTGGTCTTGCCAACTCCGAGTCCCTTCAAAAAGCAATACAGCTAAGGTGTACA
TTGAGATTCAAGATGAAAACGATCACCCCCAGTGTCCAGAAGAAATCTACATTGGAGGTGTGCTGTA
AGACGCAAGGATGTTGCGATCTGTGCTCAGAGTGAAGGCCACCGACAGGGACACGGGTAAATACAGTGCC
ATGGCCTACCGGCTCATCATACCCCGATTAAAGAGGGCAAAGAGGGTTTGTGGTGGAAACATACACAG
GTCTCATCAAGACAGCCATGCTCTTCCACAATATGAGAAGATCCTACTTCAAGTTTCAAGTGATTGCAAC
TGACGACTACGGGAAGGGTTGAGCGGGAAAGCAGACGTACTGGTCTCCGTGGTCAATCAACTGGATATG
CAGGTCATTGTCTCCAATGTGCCCCCTACACTAGTGGAAAAGAAGATAGAAGACCTTACAGAGATTTTGG
ATCGCTACGTTCAAGGAGCAAATCCTGGTGCCAAGGTTGTGGTGGAGTCCATAGGTGCCCGTCCGATGG
AGACGCCACTCCCTAGAAGACTATAGCAAGTGCACCTGACTGTCTATGCCATCGACCCGACAGCAAC
AGAGCCATCGACAGAAATGAGCTTTTTAAGTTCCTGGACGGCAAACCTGCTCGATATCAATAAAGACTTCC
AGCCGATTACGGGGAAGGAGGGCGCATTCTGGAGATTCGGACACCTGAGGCAGTGCAGCAGTCAAGAA
GCGAGGAGAAAGCTTGGGGTACACAGAAGGGCCCTTGTGGCCTTGGCCTTCAATCATCCTCTGTTGC
ATCCAGCCATCTTGGTGTCTTAGTAAGCTACCGACAGTTTAAAGTACGCCAGGCTGAGTGCACGAAGA
CCGCAAGAATTCAGTCTGCTATGCTGACGCAAGCCTGCAGCTCCTGTACCAGTGCAGCTGCGCCGCGCC
CCCGCCCCGCCACCACCACCAGGAGCACATCTCTATGAAGAAGTGGGAGAGAGCGCAATGCATAAG
TATGAGATGCCCCAGTATGGAAGTGCAGTGTGCTGCTGACAGGAGGAATACGGCGAAG
TCATTGGTGAAGCTGAAGAGGAATATGAAGAAGAAGAGGTAGAGCCAGAGAAAGTAAAAAACCCAAAGT
TGAAATTAGAGAGCCTAGTGAGGAGGAGGTGGTAGTACCCTTGAAGAAGCCACAGCGGTGAGCCACA
TACCAACGTGGAAGAGAGCCAGGATATCCCGATGATTTTTAAGAAAGTCAAGGTCTCGTGAGAAAA
GAGGCATTGACCTTGGGGCAGGAGTGGAGGAGCGCCTTGTGAAAGAAGACAAAGACTATCTTCAACT
GACTCTAGACCAGGAGGAAGCTACCGAAAGCACCGTGGAGTCAAGGAGGAGTCCAGCGACTACACAGAA
TACACAGAAACGGAGTCCGAGTTTCAAGGAGTCCGAGACAAGTGAAGAATCAGAGTCCGAGACCCATCTG
AGGAAGCGGAGGAGAGCTTACCCCGAGTCAAGGAGTCTGAGTCCACTGAGTCAAGGAGGAGAAAGC
AAGAAAAAACAATCGTGTAGCTAGAAGAAGGCTGTGGTGCAGGAAATCCAGGAGGTGAAAGGTAAGAGA
GAGGAGCCCCGGTGAAGAGGAAGAAGAGCCCCACTAGAGGAGGAAGAACGGGACAGGGAAGGAGAAG

AAAGCGAAGCAGCTCCCATGGATGAGTCCACAGACCTGGAGGCTCAGGATGTCCCAGAGGAGGGCAGTGC
 AGAATCAGTCTCCATGGAGAGGGGCGTGGAAAGTGAGGAGTCAGAGTCAGAACTGAGCAGCAGCAGCAGT
 ACCAGTGAGAGTCTCTCCGGAGGCCCTGGGGCTTTCAGGTGCCAGAATATGACAGAAGGAAGGATGAAG
 AGCCCAAGAAATCTCCAGGCGCAAACCTCCAAGGTTACAACACAGCCCTT

ACGCGTACGCGGCGCTCGAG - GFP Tag - GTTTAA

Protein Sequence:

>MG227209 representing NM_001142742
 Red=Cloning site Green=Tags(s)

MFLQFAVWKCLPHGILIASLLVSWGQYDDDWQYEDCKLARGGPPATIVAIDEESRNGTILVDNMLIKGT
 AGGPDPTIELSLKDNVDYVLLDPVKQMLFLNSTGRVLDLDRPPMNIHSIVVQVQVKNKVGTVIYHEVRI
 VVRDRNDNSPTFKHESYATVNELTPVGTTFITGFSGDNGATDIDDGPNQIEYVIQYNPEDPTSNDTFE
 IPLMLTGNVVLKRRLNYEDKTRYVYVVIQANDRAQNLNERRTTTTLTVDVLDGDDLGPMPFLPCVLPNTR
 DCRPLTYQAAIPELRTPEELNPILVTPPIQAIDQDRNIQPPSDRPGILYSILVGTPEDYPRFFHMHPRTA
 ELTLLEPVNRDFHQKFDLVIKAEQDNGHPLPAFASLHIEILDENNQSPYFTMPSYQGYILESAPVGATIS
 ESLNLTPLRIVALDKDIEDVPPGGVPTKPELHLFLNDYTSVFTVPTGITRYLTLQPVDRREEQTYT
 FLITAFDGVQSEPVVNVIRVMDANDNTPTFPEISYDVVYVYDMSPGDSVIQLTAVDADEGSNGEISYEI
 LVGGKGDVFINKTTGLVSIAPGVELIVGQTYALTVQASDNAPPAERRHSICTVYIEVLPNNQSPRFPQ
 LMSYLEVSEAMRIGAILLNLQATDREGDPITYAIENGDPQRFVNLSETTGILSLGKALDRESTDRYILIV
 TASDGRPDGTSTATVNIIVTDVNDNAPVFDPYLPRNLSVVEEENAFVGVQVRATDPDAGINGQVHYSLGN
 FNNLFRITSNGSIYTAVKLNREARDHYELVVVATDGAVHPRHSTLTLYIKVLDIDDNSPVFTNSTYTVVV
 EENLPAGTSFLQIEAKVDLGANVSYRIRSPEVKHLFALHPFTGELSLLRSLDYEAFPDQEAASITFLVEA
 FDIYGTMPPIATVTVIIVKMDNDYPPVFSKRIYKGMVAPDAVKGTPITTVYAEDADPPGMPASRVRYVD
 DVQFPYPASIFDVEEDSGRVVTRVNLNEEPTTIFKLVVVAFFDDGPEVMSSSATVRILVLHPGEIPRFTQE
 EYRPPVSELAARGTVVGVISAAAINQSIYYSIVAGNEEDKFGINNVTVGIYVNSPLDYETRTSYVLRVQ
 ADSLEVLANLRVPSKSNKAKVYIEIQDENDHPPVFQKKFYIGGVSEDAARMFASVLRVKATDRDTGNYS
 MAYRLIIPPIKEGKEGFVETTYGLIKTAMLFHNMRYSYFKFQVIATDDYKGLSGKADVLVSVVNLDM
 QVIVSNVPPTLVEKKIEDLTEILDYVQEQIPGAKVVVESIGARRHGDAYSLDYKCDLTVYAIADPQTN
 RAIDRNELFKFLDGKLLDINKDFQPYGEGGRILEIRTPEAVTSIKKRGESLGYTEGALLALAFIIILCC
 IPAILVVLVSYRQFKVRQAECKTARIQSAMPAKPAAPVPAAPPPPPPPPPGAHLYEELGESAMHK
 YEMPQYGSRRRLPPAGQEEYGEVIGEAEVEVEVEVEPEKVKPKVEIREPSEEEVVVTEKPPAAEPT
 YPTWKRARIFPMIFKKVRGLAEKRGIDLEGEWRRRLDEEDKDYQLTLDQEEATESTVESEESSDYTE
 YTETESEFSESETTESESETPSEEAESSTPESESESESESEGEKARKNIVLARRRPVVEEIQEVKGR
 EEPPEVEEEEPPEEEERAEEGESEAAPMDESTDLEAQDVPEEGSAESVSMERGVSESESESELSSSS
 TSESLSGGPWGFQVPEYDRRKDEEPKSPGANSEGYNTAL

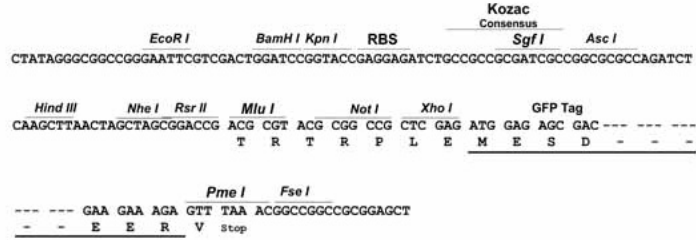
TRTRPLE - GFP Tag - V

Restriction Sites:

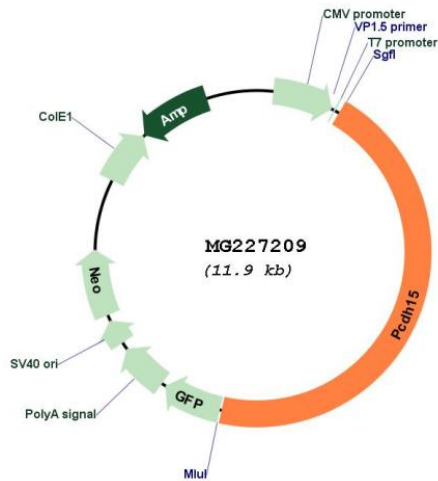
Sgfl-MluI

Cloning Scheme:

Cloning sites used for ORF Shutting:



Plasmid Map:



ACCN:	NM_001142742
ORF Size:	5370 bp
OTI Disclaimer:	The molecular sequence of this clone aligns with the gene accession number as a point of reference only. However, individual transcript sequences of the same gene can differ through naturally occurring variations (e.g. polymorphisms), each with its own valid existence. This clone is substantially in agreement with the reference, but a complete review of all prevailing variants is recommended prior to use. More info
OTI Annotation:	This clone was engineered to express the complete ORF with an expression tag. Expression varies depending on the nature of the gene.
Components:	The ORF clone is ion-exchange column purified and shipped in a 2D barcoded Matrix tube containing 10ug of transfection-ready, dried plasmid DNA (reconstitute with 100 ul of water).
Reconstitution Method:	<ol style="list-style-type: none">1. Centrifuge at 5,000xg for 5min.2. Carefully open the tube and add 100ul of sterile water to dissolve the DNA.3. Close the tube and incubate for 10 minutes at room temperature.4. Briefly vortex the tube and then do a quick spin (less than 5000xg) to concentrate the liquid at the bottom.5. Store the suspended plasmid at -20°C. The DNA is stable for at least one year from date of shipping when stored at -20°C.
RefSeq:	NM_001142742.1 , NP_001136214.1
RefSeq Size:	6303 bp
RefSeq ORF:	5373 bp
Locus ID:	11994
UniProt ID:	Q99PJ1
Cytogenetics:	10 37.43 cM
Gene Summary:	Calcium-dependent cell-adhesion protein. Required for inner ear neuroepithelial cell elaboration and cochlear function. Probably involved in the maintenance of normal retinal function.[UniProtKB/Swiss-Prot Function]