

Product datasheet for **MG227200**

Rps6ka6 (NM_025949) Mouse Tagged ORF Clone

Product data:

Product Type:	Expression Plasmids
Product Name:	Rps6ka6 (NM_025949) Mouse Tagged ORF Clone
Tag:	TurboGFP
Symbol:	Rps6ka6
Synonyms:	2610524K04Rik; RSK4; S6K-alpha-6
Mammalian Cell Selection:	Neomycin
Vector:	pCMV6-AC-GFP (PS100010)
E. coli Selection:	Ampicillin (100 ug/mL)



[View online »](#)

ORF Nucleotide Sequence:

>MG227200 representing NM_025949
 Red=Cloning site Blue=ORF Green=Tags(s)

TTTTGTAATACGACTCACTATAGGGCGGCCGGGAATTCGTGACTGGATCCGGTACCGAGGAGATCTGCC
 GCC**CGGATCGCC**

ATGCTGAATTTTAGAAGGACACGCCACAGCCATCTGGCCACAGGTCCAACCTCTAACTTGAACCTGTTCT
 GTTGTCTTCCATTTTTTGGATGTCGTGCGGATCCAAGAGTCGGCAGCGGGCGGGACCCCGTGGTCCC
 TCTTTGAGGTACCCCGGCTGGCGAGGTGCGCAGTCACCCAGCGCGAGACCTGGTCTTTCGAAGACGAC
 CAGGAGCCCGCTCAGCAGACGGGATGCATGCTGGTGTGGGGCCAGGCAGCTTCTTCTCGAGAGCCCTG
 AAGCGGCGATGCTACCGTTCGCCCTGTGGAGGATCCCTGGGACCAAGAAGACATGGAGGTGTCGGCAG
 CACGAGCAGTAGCGAGCCACAGTTGTGTTTACCATGAAGAACGCAGCAACGGTTATGCGGGAGCATGAA
 CGCAAAGAGGTAATGATCTGAAAATGGTTGATGAGCCAATGGAAGAGGGAGAGCCAGTTTCTTGCCGGC
 GGAAGAATTGGTTAAGGAGATACCTATTACACAGCATGTTAAAGAAGGATACGAGAAAGCAGATCCCGC
 ACAGTTTGACTTGCTCAAGGTTCTGGTCAGGGATCTTTTGGAAAGGTTTTTCTGTTAGAAAGAAGACT
 GGTCTGATGCTGGGCAGCTCTATGCAATGAAGGTGTTAAGAAAAGCTTCTTTGAAAGTTCGAGACCCGAG
 TTCGCACAAAGATGGAGAGGGATATCTTGGTGAAGTAAATCATCCCTTATCGTCAAATGCACATATGC
 TTTTCAGACTGAAGGGAAGCTGTACTTAATATTGGATTTCTCAGGGGAGGAGATGTCTTACAAGATTA
 TCCAAAGAGGTTCTTTTACAGAGGAAGATGTGAAATTCACCTTGCCAGAAATGGCCCTGGCTTTGGATC
 ATCTACATCGATTAGGAATGTTTATAGAGACCTGAAACCAGAAAAACATCTTACTTGATGAAATAGGACA
 TATCAAGTTAACAGATTTTGGGCTTAGCAAAGAGTCAGTGGATCAAGAAAAGAAGGCCTACTCATTTTGT
 GGTACTGTAGAATATATGGCCCCTGAAGTAGTAAACAGACGAGGCCATTCTCAGAGTGTGATTGGTGGT
 CATATGGTGTACTTATGTTTGAATGCTTACTGGCACTTTGCCATTTCAAGGGAAAAGACAGAAATGAGAC
 CATGAATATGATACTGAAAGCAAAAACCTTGAATGCCCAATTCCTTAGTGCTGAAGCACAAAGTCTATTA
 AGGATGTTATTCAAAGGAATCCAGCAAATAGATTGGGGTCAGAAGGAGTTGAAGAAGTCAAAGACATG
 CTTTTTTGCTTCCATTGACTGGAATAAATATATAAAAGAGAAGTCCAGCCTCCTTTCAGACCTGCTTC
 TGGAAAACCGGATGATACCTTCTGTTTTGATCCTGAATTTACTGCCAAAACACCTAAAGATTCTCCTGGT
 TTGCCAGCCAGTGCAAACGCTCATCAACTCTTCAAAGGATTCAGTTTTGTTGCGACTTCTATTGCCGAAG
 AATATAAATCACTCCTGTTACAAGTTCAAATGTATTACCAATCGTTCAGATAAATGGAATGCTGCTCA
 ATTTAGTGAAGCTTATGAATTGAAAGAGGATATTGGTATTGGTCTTATTCTGTTTGAAGCGATGCATA
 CACTCAGCTTCCAATGTGAATTTGCAGTCAAGATCATTGATAAAAATAAGAGAGACCCCTCAGAAGAAA
 TTGAAATTTGATGCGCTATGGACAACATCCCAACATTATCTCTTAAAGGAGGTCTTTGATGATGGGAA
 ATATGTTTACCTGTTACGGACTTGATGAAAGGAGGAGAACTTCTGGATCGGATTCTCAAAAAGAAATGT
 TTCTCAGAGCAGGAAGCTAGTAATGTGCTGTATGTAATAACCAAGACAGTTGAATGCCTTCACTCAAG
 GAGTCGTTTCATCGTGATCTTAAGCCCAGTAATATTTTATATATGGATGAGTCAGCCCATCCAGATTCAAT
 CAAGATCTGTGATTTTGGGTTTGCAAAACAGCTTCGTGGAGAAAATGGACTTCTGTTAACTCCGTGCTAC
 ACCGAAAACCTTTGTAGCACCTGAGGTTCTCACTCAACAGGGATATGATGCTGCCTGTGATATTTGGAGCT
 TAGGAGTCTTTTGTACACAATGTTGGCTGGCTCACTCCATTTTCCAACGGCCCAATGATACTCCTGA
 GGAATACTGCTGCGCATAGGCAACGGGAGGTTCTCTTTGAGTGGTGAATCTGGGACAATATTTACGTT
 GGAGCAAAGGATTTGCTTCTCATATGCTTACATGGACCCACATCAGCGTTATACTGCTGAGCAAGTAT
 TAAAGCACCTTGATAACCCAAAGAGAACAAGTCCCGGCCATCAGCCAAACTCAGATGAGCCACCACA
 GGAAGCAGTGGCAGCACCATATTCTGTCTTGGCTCGGAACCCAAACAGGCATCATCCAATCTGGAGCCT
 GTTACTGCTTACGTTTAGCTCAGAGGCGGAACATGAAAAGCGAACATCAACTGGCTTG

ACGCGTACGCGGCCGCTCGAG - GFP Tag - GTTTAA

Protein Sequence: >MG227200 representing NM_025949
 Red=Cloning site Green=Tags(s)

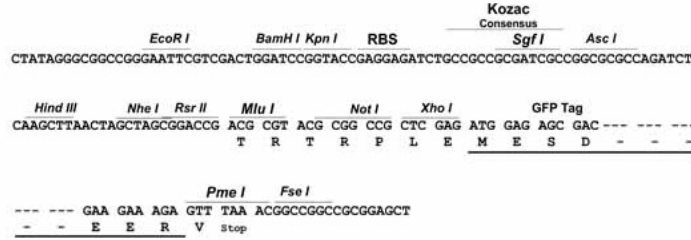
```
MLNFRTRHTPSGHRNSNLNLCCLPFFGCRRRSKSRQRAGTPVVPLLRYPRLARSQAVTQRETWSFEDD
QEPAQQTGCMLVLGPGSFFSRAPEAAMLPAFVEDPQEDMEVFGSTSSSEPQVVFTMKNAAATVMREHE
RKEVNLDLKMVDEPMEEGEPVSCRREELVKEIPITQHVKEGYEKADPAQFDLLKVLGQGSFGKVFVLRKKT
GPDAGQLYAMKVLKASLKVDRVVRTKMERDILVEVNHPFIVKLHYAFQTEGKLYLILDFLRGGDVFTL
SKEVLFTEEDVKFYLAELALALDHLHRLGIVYRDLKPENILLDEIGHIKLTDGFLSKESVDQEKAYSFC
GTVEYMAPEVVNRRGHSQSADWWSYGVLMEMLTGTLPFQGKDRNETMNMILKAKLGMPQFLSAEQSLL
RMLFKRNPANRLGSEGVEEVKRHAFFASIDWNKLYKREVQPPFRPASGKPDPTFCDFPEFTAKTPKDSFG
LPASANAHLFKGFSFVATSI AEEYKIPVTSSNVLPIVQINGNAAQFSEAYELKEDIGIGSYSVCKRCI
HSASNVEFAVKIIDKNKRDPSIEIILMRYGQHPNIIISLKEVFDDGKYVYLVTDLMKGGELLDRILKCKC
FSEQEASNVLYVITKTVECLHSQGVVHRDLKPSNIIYMDESAHPDSIKICDFGFAKQLRGENGLLTPCY
TANFVAPEVL TQQGYDAACDIWVLLYTMLAGYTPFSNGPNDTPEEILLRIGNGRFSLSGGIWDNISR
GAKDLLSHMLHMDPHQRYTAEQVLKHPWITQREQLPRHQPNSEPPQEAVAAPYVLRNPNRHHPILEP
VTASRLAQRRNMKKRTSTGL
```

TRTRPLE - GFP Tag - V

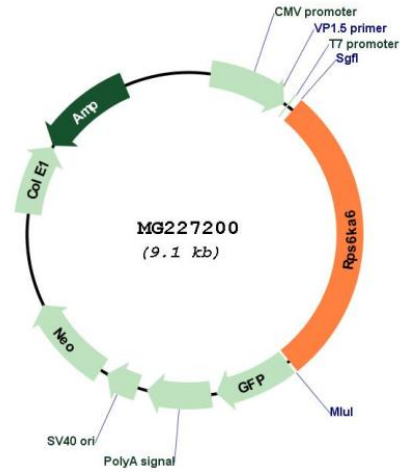
Restriction Sites: Sgfl-MluI

Cloning Scheme:

Cloning sites used for ORF Shutting:



Plasmid Map:



ACCN:	NM_025949
ORF Size:	2580 bp
OTI Disclaimer:	The molecular sequence of this clone aligns with the gene accession number as a point of reference only. However, individual transcript sequences of the same gene can differ through naturally occurring variations (e.g. polymorphisms), each with its own valid existence. This clone is substantially in agreement with the reference, but a complete review of all prevailing variants is recommended prior to use. More info
OTI Annotation:	This clone was engineered to express the complete ORF with an expression tag. Expression varies depending on the nature of the gene.
Components:	The ORF clone is ion-exchange column purified and shipped in a 2D barcoded Matrix tube containing 10ug of transfection-ready, dried plasmid DNA (reconstitute with 100 ul of water).
Reconstitution Method:	<ol style="list-style-type: none"> 1. Centrifuge at 5,000xg for 5min. 2. Carefully open the tube and add 100ul of sterile water to dissolve the DNA. 3. Close the tube and incubate for 10 minutes at room temperature. 4. Briefly vortex the tube and then do a quick spin (less than 5000xg) to concentrate the liquid at the bottom. 5. Store the suspended plasmid at -20°C. The DNA is stable for at least one year from date of shipping when stored at -20°C.
RefSeq:	NM_025949.3 , NP_080225.2
RefSeq Size:	4330 bp
RefSeq ORF:	2583 bp
Locus ID:	67071
UniProt ID:	Q7TPS0
Cytogenetics:	X E1
Gene Summary:	Constitutively active serine/threonine-protein kinase that exhibits growth-factor-independent kinase activity and that may participate in p53/TP53-dependent cell growth arrest signaling and play an inhibitory role during embryogenesis.[UniProtKB/Swiss-Prot Function]