

## Product datasheet for **MG227198**

### **Pcdh15 (NM\_001142740) Mouse Tagged ORF Clone**

#### Product data:

Product Type:	Expression Plasmids
Product Name:	Pcdh15 (NM_001142740) Mouse Tagged ORF Clone
Tag:	TurboGFP
Symbol:	Pcdh15
Synonyms:	av; BB078305; ENSMUSG00000046980; Gm9815; nmf19; roda; Ush1f
Mammalian Cell Selection:	Neomycin
Vector:	pCMV6-AC-GFP (PS100010)
E. coli Selection:	Ampicillin (100 ug/mL)
ORF Nucleotide Sequence:	>MG227198 representing NM_001142740 Red=Cloning site Blue=ORF Green=Tags(s)

TTTTGTAATACGACTCACTATAGGGCGGCCGGAATTCGTCGACTGGATCCGGTACCGAGGAGATCTGCC  
GCC**CGATCGCC**

ATGTTCTACAGTTTGCTGTCTGGAAGTGTACCCCATGGGATCCTCATTGCCTCTCTTGGTAGTCA  
GCTGGGGCCAGTATGACGATGATTGCAAACAGCTAGGGGAGGACCACCAGCTACTATCGTGCCATTGA  
TGAAGAGAGTCGAAACGGTACAATTCTGGTGGATAACATGTTGATTAAGGGGACTGCCGGAGGACCAGAC  
CCCACCATAGAGCTCTTTAAAGGACAACGTGGACTACTGGGTGTTGCTGGACCCGTTAAACAGATGC  
TTTTCTGAAACAGTACCGGAAGAGTTCTGGATAGAGACCCACCAATGAACATACACTCCATTGTGGTGCA  
AGTCCAGTGTGTCAACAAGAAGTTGGCACAGTTATCTATCATGAAGTACGCATCGTGGTGCGAGATCGG  
AATGACAACCTCCCCACATTCAAGCATGAAAGCTACTATGCCACCGTGAATGAGCTCACTCCAGTTGGCA  
CCACGATATTCACGGGGTTCTCGGGAGACAATGGAGCTACAGACATAGACGATGGCCCTAATGGACAGAT  
AGAATACGTGATTCAGTACAACCCAGAAGATCCGACATCCAACGACACCTTTGAAATCCACTCATGCTG  
ACTGGCAACGTGGTACTGAGGAAAAGACTCAACTATGAGGATAAGACTCGCTACTATGTCATCATCCAAG  
CAAATGACCGTGCACAAAATCTGAATGAGAGGCGAACAACCACCACCCTCACAGTAGATGTTCTAGA  
TGGAGATGACCTGGGACCTATGTTTCTGCCTTGTTCTTGTGCCAAACACACGTGACTGTCGTCCACTC  
ACCTACCAAGCTGCCATTCTGAACTGAGGACTCCGGAAGAAGTGAACCCATTTTTGGTGACACCACCTA  
TCCAAGCCATTGATCAGGACCGAAACATCCAACCACCATCTGATCGACCTGGCATCCTCTACTCCATCCT  
TGTCGGCACCCCTGAGGATTACCCCGCTTCTTCCATATGCATCCAGGACTGCAGAACCTCACTCTCCTG  
GAGCCAGTAAACAGAGACTTCCATCAAAAATTTGATTTGGTTATTAAGGCTGAGCAGGACAATGGCCACC  
CACTTCTGCCTTTGCTAGTCTGCACATCGAAATACTAGACGAAAACAATCAGAGTCCATACTTCACAAAT  
GCCAGCTATCAAGGATACATCCTGGAATCCGCCAGTGGGAGCCACCATTTCTGAGAGCTAAACTTA  
ACCACTCTCTGAGAATTGTAGCTCTGGACAAAGACATAGAAGACACAAAAGATCCAGAGCTCCACCTCT  
TCCTGAATGACTACACCTCGGTCTTCACTGTGACACCCACTGGTATCACCCGCTACCTCACCTGCTTCA  
ACCTGTGGACAGGGAGGAACAGCAAACCTACACCTTTCTGATAACAGCGTTTGATGGCGTGCAAGAAAGT



[View online »](#)

GAGCCAGTCGTGGTCAATATCCGAGTGATGGATGCAAATGATAACACGCCACCTTCCCTGAAATCTCT  
 ATGATGTCTATGTTTACACAGACATGAGTCCTGGGGACAGCGTCATTCAGCTGACAGCGGTAGATGCTGA  
 TGAAGGCTCTAATGGGGAGATCTCTATGAAATACTGGTGGGGGCAAGGGAGACTTCGTGATCAACAAG  
 ACCACAGGGCTGGTGAGCATTGCACCAGGCGTGGAGCTGATCGTGGGACAGACGTATGCGCTCACAGTGC  
 AGGCTTCGGACAACGCCCCGCTGCAGAAAAGAAGGCACCTCCATCTGCACAGTGTACATCGAGGTGCTTCC  
 TCCTAACAAACAGAGCCCTCCCCGCTTCCCGCAGCTGATGTACAGTCTGGAAGTCAGCGAGGCCATGAGG  
 ATCGGTGCTATTTTAAATCTACAGGCAACTGATCGAGAGGGAGATCCAATCACATAGCCATCGAGA  
 ATGGAGACCCTCAGAGAGTTTTTAACTTTTCAGAAACCACAGGGATTCTCAGCCTAGGGAAGGCTCTAGA  
 CCGCGAGAGCACAGACCCTACATCCTCATCGTCACAGCCTCAGATGGCAGACCGGATGGAACCTCAACT  
 GCCACTGTGAACATAGTGGTGACGGACGTCAATGACAACGCTCCCGTGTTTCGATCCCTATCTGCCAGGA  
 ACCTCTCTGTGGTGGAGGAAGAAGCCAATGCCTTTGTGGGTCAAGTCCGGGCAACAGACCCAGATGCTGG  
 GATAAACGGCCAAGTTCCTACAGCCTGGGGAACCTCAACAACCTCTCCGCATCACATCCAACGGGAGC  
 ATTTACACAGCCGTGAAGCTGAACAGGGAAGCCAGGGACCACTATGAACTGGTTGCTGGCAACAGATG  
 GAGCAGTCCACCCTCGACATTCAACTCTGACACTGTACATCAAGGTGTTGGACATTGATGATAACAGTCC  
 TGTTTTTACCAATTCAACGTACACAGTTGCTGTTGAAGAGAATCTGCCAGCCGGGACCTCCTTTCTTCAA  
 ATAGAGGCCAAGGATGTTGACCTTGGAGCCAATGTGTCATATCGGATCAGAAAGCCAGAAGTGAAACACC  
 TTTTTGCACTGCATCCATTCCTGAGGAAATGCTCTTCTGAGGAGTTGGATTATGAGGCCCTTCCGGA  
 CCAGGAGGCAAGCATCACATTCTTGGTGGAGGCCCTTTCACATTTATGGGACTATGCCACCTGGTATAGCA  
 ACAGTCACGGTAATTGTGAAGGACATGAATGACTACCCTCCAGTGTTCAGCAAACGCATCTACAAGGGGA  
 TGGTGGCTCCAGATGCAGTCAAGGGGACACCAATCACCACCGTTTATGCTGAAGATGCGGACCCACCTGG  
 GATGCCTGCAAGTAGGGTGAAGTATCGAGTGGACGACGTGCAGTTCCATACCCAGCCAGTATTTTTGAT  
 GTAGAGGAAGATTCTGGAAGAGTAGTAACCCCGTCAATCTTAAATGAAGAGCCTACTACGATTTTCAAGC  
 TGGTGGTTGTGGCTTTGATGACGGGCAACCTGTGATGTCCAGCAGTGCACGGTGAAGAAATCTTGTCTT  
 ACATCCTGGAGAGATCCCACGCTTCAACCAAGAGGAATACAGACCTCCTCCTGTAAGTGAAGTCTTGGCC  
 AGAGGGACTGTAGTTGGTGCATTTCTGCTGCTGCCATTAATCAGAGCATCGTGTACTCCATTGTGGCAG  
 GAAATGAGGAAGACAAGTTTGAATCAACAATGCACTGGGGTCACTATGTGAATTACCATTGGATTA  
 CGAGACAAGGACCAGCTATGTGCTCCGGGTACAAGCAGATTCTCTGGAAGTGGTCTTGGCAATCTCCGA  
 GTCCCTTCAAAAAGCAATACAGCTAAGGTGTACATTGAGATTGAGGATGAAAACGATCACCCCCAGTGT  
 TCCAGAAGAAATCTACATTGGAGGTGTGTCTGAAGACGCAAGGATGTTCCGCATCTGTGCTCAGAGTGAA  
 GGCCACCAGACAGGGACACGGTAATTACAGTGCATGGCCTACCGGCTCATCATACCGCCGATTAAGAG  
 GGCAAAGAGGGGTTTGTGGTGGAAACATACACAGGTCTCATCAAGACAGCCATGCTCTTCCACAATATGA  
 GAAGATCTACTTCAAGTTTCAAGTGATTGCAACTGACGACTACGGGAAGGGGTTGAGCGGGAAAGCAGA  
 CGTACTGGTCTCCGTGGTCAATCAACTGGATATGCAGGTCAATGCTCCAATGTGCCCCCTACACTAGTG  
 GAAAAGAAGATAGAAGACCTTACAGAGATTTTGGATCGCTACGTTTCAGGAGCAAATTCCTGGTGCCAAGG  
 TTGTGGTGGAGTCCATAGGTGCCCGTCGCCATGGAGACGCTACTCCCTAGAAGACTATAGCAAGTGCGA  
 CCTGACTGTCTATGCCATCGACCCGACAGCAACAGAGCCATCGACAGAAATGAGCTTTTTAAGTTCTCTG  
 GACGGCAAACCTGCTCGATATCAATAAAGACTTCCAGCCGATTACGGGGAAGGAGGGCGCATTCTGGAGA  
 TTCGGACACCTGAGGCAGTGACGAGCATCAAGAAGCGAGGAGAAAGCTTGGGGTACACAGAAGGGCCCT  
 GCTGGCCTTGGCCTTATCATCATCCTCTGTTGCATCCCAGCCATCTTGGTCTTATAGTAACTACCGA  
 CAACGCCAGGCTGAGTGCACGAAGACCGAAGAATTGAGTCTGCTATGCCTGCAGCCAAGCCTGCAGCTC  
 CTGTACCAGTGCGCCTGCGCCGCCCCGCCACCACCACCAGGAGCACATCTCTATGAAGA  
 ACTGGGAGAGAGCGCAATTTCTTCTCTTCTACCATTTTGAACAAGCAGGGGAAATAACTCAGTCCCA  
 GAAGACAGGAGCAGTATCGGATGGGATGGCCTTTTCTCCAGTACCACTGAGTCTCATGAGCCAGCTC  
 ATGTAGAGGGACCACTTAAGGAGAGCCAGCCTAACCCAGCAAGGACGTTCTCATTGTTCTGATGAGGA  
 TAACTTAAGTACCATAATCCCCTTACATGGAAAGTATAGTCAAAGGTCAACAACTCAGACCTTCAG  
 CCAGAACAGATTTTGAAGAGCTGTTGGCACCCAGAACAAGTTAAGAGTCAGTCTCTGAGGGGCCCAA  
 GAGAAAAGATCCAGAGGGTGTGGAAATCAGTCTGTGAGCTTTCCTAGGCGGCTCATGTGAAAAGCCCCAA  
 CAGGCCAGAGACCATAGACCTGGTGGAGTGGCAGATCACCAATCAGAGAGCTGAATGCGAAAGCGCCAGA  
 TGCCACCCAAGCCAGAGAGGTAGCAGCAACGTTCTGCTGGCAACTGAAGATGCCACGAGTCAAGAAAAG  
 AAGGGGGACACAGAGACCCCTAATCGTCCAGCAAACAGAGCAGCTGAAATCTCTGTCTTCTGGCTCTT  
 TTTTCTCTCTTGGTCTCACTTTTCTTCTCAACTCTGCCAACGATTTCCAGAGCGGTGGAACCTGGG  
 TCGGAACCTAATGTGGTCACTTCTCCGCTGACTGCACCTTGAACCTTCTCTCTCTGAGACCCGTA

TTTTAACTCCTTAAGCTCTAAGAGAGAGACTCCACATGTGCATCAGATACAGAACCAAAAAGGAACT  
 TTTTGAGATCGCTCCCATCCACCTAGCATCTCTGCTCCCTCCACATCCGCCTCTTCTAGACCTCCC  
 ATTGCTTTACCCTTTTCTCTTCCCCTTTCTCCCCCTAACCTCCTCCCCACAACCTGTTACATTTT  
 CTCTTCCATTTCTACACCCCTACTTCTTCTACCTTCTCTCCTCCACTGTCACTTCTCTCTCTCC  
 TCGGCCACCAGCTCCCCGCTCTTCCACAGCCTCCTTCCACGTCCATCCATCCACAGACAGCATCTCT  
 GCACCAGCTGCTAAATGCACTGCCAGTCCACACACGCCAGAGAAAACACGTCTACGACACGCCACCAG  
 CATCCAACCCGAGTGGGGGCGAGAACCCACAGACATCCAAAAGGGATCCTCAGACATGTGAAAAACT  
 GGCAGAGCTCGAGAAATCAGTGTCTAACATGTACAGTCACATAGAAAAAACTGCCACCTGCAGATCCC  
 TCAAAACTACACAGTTTTGCCCTGCAGAGAAAACAGGCATGAAAATCACACATGACCAGAGCCAGGAAA  
 CGTTGGTTAGAGTTGTTGAGGGAATTGACGTGCAACCTCACAGTCAATCAACATCTTTG

ACGCGTACGCGGCCGCTCGAG - GFP Tag - GTTTAA

**Protein Sequence:**

>MG227198 representing NM\_001142740  
 Red=Cloning site Green=Tags(s)

MFLQFAVWKCLPHGILIASLLVSWGQYDDDKLARGPPATIVAIDEESRNGTILVDNMLIKGTAGGPD  
 PTIELSLKDNVDYVWLLDPVKQMLFLNSTGRVLDLDRPPMNIHSIVVQVQCVNKKVGTVIYHEVRIVVRDR  
 NDNSTPKHESYATVNELTPVGTITFTGSGDNGATDIDDGPNQIEYVIQYNPEDPTSNDTFEIPLML  
 TGNVVLKRRLNYEDKTRYVYIIQANDRAQNLNERRTTTTLTVDVLGDGDLGPMFLPCVLVPNTRDCRPL  
 TYQAAIPELRTPEELNPILVTPPIQAIDQDRNIQPPSDRPGILYSILVGTPEDYPRFFHMHPRTAELTLL  
 EPVNRDFHQFDLVIKAEQDNGHPLPAFASLHIEILDENNQSPYFTMPSYQGYILESAPVGATISESLNL  
 TTPLRIVALDKDIEDTKDPELHLFLNDYTSVFTVTPTGITRYLTLLQPVDREEQTYTFLITAFDGVQES  
 EPVVVNIIRVMDANDNTPTFPEISYDVVYVYDMSPGDSVIQLTAVDADEGSNGEISYEILVGGKGFVINK  
 TTGLVSIAPGVELIVGQTYALTVQASDNAPPAERRHSICTVYIEVLPPNNQSPRFPQLMYSLEVSEAMR  
 IGAILLNLQATDREGDPIYAIENGDPQRVFNLSETTGILSLGKALDRESTDRYILIVTASDGRPDGTST  
 ATVINIVTDVNDNAPVFDPYLPRNL SVVEEENAFVGVQRATDPDAGINGQVHYSLGNFNLFRITSNGS  
 IYAVKLNREARDHYELVVVATDGAHVPRHSTLTLYIKVLDIDDNSPVFTNSTYTVVVEENLPAGTSFLQ  
 IEAKDVDLGANVSYRIRSPVKHLFALHPFTGELSLRLSDYEAFFDQEAISITFLVEAFDIYGTMPPIA  
 TVTVIVKDMNDYPPVFSKRIYKGMVAPDAVKGTPITTVYAEDADPPGMPASRVRYRVDDVQFPYPASIFD  
 VEEDSGRVVTRVNLNEEPTTIFKLVVAFDDGEPVMSSSATVRILVLPGEIPRFQEEYRPPPVSELAAR  
 RGTVVGVISAAAINQSIYVSIVAGNEEDKFGINNVTVGIYVNSPLDYETRTSYVLRVQADSLEVLANLR  
 VPSKSNKAVYIEIQDENDHPPVFQKKFYIGGVSEDARMFASVLRVKATDRDTGNYSAMAYRLIIPPIKE  
 GKEGFVETYTGLIKTAMLFHNMRRSYFKQVIATDDYGKGLSGKADVLVSVVNQLDMQVIVSNVPTLV  
 EKKIEDLTEILDYVQEQIPGAKVVVESIGARRHGDAYSLEDYSKCDLTVYAIDPQTNRAIDRNELFKFL  
 DGKLLDINKDFQYYYGEGGRILEIRTPEAVTSIKKRGESLGYTEGALLALAFIILCCIPAILVVLVSYR  
 QRQAECTKTARIQSAMPAKPAAPVPAAPAPPPPPPPPPGAHLYEELGESAILFLLYHFEQSRGNNSVP  
 EDRSSHRDGMASFSSTTESHEPAHVEGPLKESQPNPARTFSFVPDEDNLSTHNPLYMESIGQRSTNSDLQ  
 PRTDFEELLAPRTQVKSQSLRGPREKIQRVWNQSVSFPRLMWKAPNRPETIDLVEWQITNQRAECESAR  
 CHPSQRGSSNVLLATEDAHESEKEGGHRTLIVQQTEQLKSLSSGSSFSSSWSHFSFSTLPTISRAVELG  
 SEPNVVTPADCTLELSPPLRPRILNLSKRETPTCASDTEPKRNSFEIAPHPPSISAPLPHPPPLPRPP  
 IAFITTFPLPLSPPNPPPPQLVTFSLPISTPPTSSLPLPPLSLPPPPPPAPRLFQPPSTSIPTSDSIS  
 APAAKCTASATHARETTSTQPPASNQWGAEPHRHPKGILRHVKNLAELEKSVSNMYSHIEKNCPADP  
 SKLHTFCPAEKTGMKITHDQSQETLVRVVEGIDVQPHSQSTSL

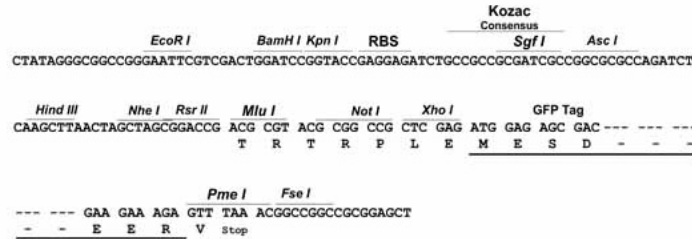
TRTRPLE - GFP Tag - V

**Restriction Sites:**

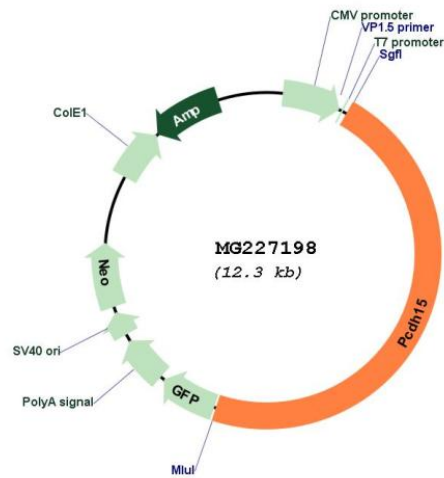
Sgfl-MluI

Cloning Scheme:

Cloning sites used for ORF Shutting:



Plasmid Map:



ACCN: NM\_001142740

ORF Size: 5799 bp

<b>OTI Disclaimer:</b>	The molecular sequence of this clone aligns with the gene accession number as a point of reference only. However, individual transcript sequences of the same gene can differ through naturally occurring variations (e.g. polymorphisms), each with its own valid existence. This clone is substantially in agreement with the reference, but a complete review of all prevailing variants is recommended prior to use. <a href="#">More info</a>
<b>OTI Annotation:</b>	This clone was engineered to express the complete ORF with an expression tag. Expression varies depending on the nature of the gene.
<b>Components:</b>	The ORF clone is ion-exchange column purified and shipped in a 2D barcoded Matrix tube containing 10ug of transfection-ready, dried plasmid DNA (reconstitute with 100 ul of water).
<b>Reconstitution Method:</b>	<ol style="list-style-type: none"><li>1. Centrifuge at 5,000xg for 5min.</li><li>2. Carefully open the tube and add 100ul of sterile water to dissolve the DNA.</li><li>3. Close the tube and incubate for 10 minutes at room temperature.</li><li>4. Briefly vortex the tube and then do a quick spin (less than 5000xg) to concentrate the liquid at the bottom.</li><li>5. Store the suspended plasmid at -20°C. The DNA is stable for at least one year from date of shipping when stored at -20°C.</li></ol>
<b>RefSeq:</b>	<a href="#">NM_001142740.1</a> , <a href="#">NP_001136212.1</a>
<b>RefSeq Size:</b>	9034 bp
<b>RefSeq ORF:</b>	5802 bp
<b>Locus ID:</b>	11994
<b>UniProt ID:</b>	<a href="#">Q99PJ1</a>
<b>Cytogenetics:</b>	10 37.43 cM
<b>Gene Summary:</b>	Calcium-dependent cell-adhesion protein. Required for inner ear neuroepithelial cell elaboration and cochlear function. Probably involved in the maintenance of normal retinal function.[UniProtKB/Swiss-Prot Function]