

## Product datasheet for **MG227177**

### **Pcdh15 (NM\_001142737) Mouse Tagged ORF Clone**

#### Product data:

Product Type:	Expression Plasmids
Product Name:	Pcdh15 (NM_001142737) Mouse Tagged ORF Clone
Tag:	TurboGFP
Symbol:	Pcdh15
Synonyms:	av; BB078305; ENSMUSG00000046980; Gm9815; nmf19; roda; Ush1f
Mammalian Cell Selection:	Neomycin
Vector:	pCMV6-AC-GFP (PS100010)
E. coli Selection:	Ampicillin (100 ug/mL)
ORF Nucleotide Sequence:	>MG227177 representing NM_001142737 Red=Cloning site Blue=ORF Green=Tags(s)

TTTTGTAATACGACTCACTATAGGGCGGCCGGAATTCGTCGACTGGATCCGGTACCGAGGAGATCTGCC  
GCC**CGATCGCC**

ATGTTCTACAGTTTGCTGTCTGGAAGTGTACCCCATGGGATCCTCATTGCCTCTCTCTTGGTAGTCA  
GCTGGGGCCAGTATGACGATGATTGCAAACCTAGCTAGGGGAGGACCACCAGCTACTATCGTGCCATTGA  
TGAAGAGAGTCGAAACGGTACAATTCTGGTGGATAACATGTTGATTAAGGGGACTGCCGGAGGACCAGAC  
CCCACCATAGAGCTCTTTAAAGGACAACGTGGACTACTGGGTGTTGCTGGACCCGTTAAACAGATGC  
TTTTCTGAAACAGTACCGGAAGAGTTCTGGATAGAGACCCACCAATGAACATACACTCCATTGTGGTGCA  
AGTCCAGTGTGTCAACAAGAAGTTGGCACAGTTATCTATCATGAAGTACGCATCGTGGTGCGAGATCGG  
AATGACAACCTCCCCACATTCAAGCATGAAAGCTACTATGCCACCGTGAATGAGCTCACTCCAGTTGGCA  
CCACGATATTCACGGGGTTCTCGGGAGACAATGGAGCTACAGACATAGACGATGGCCCTAATGGACAGAT  
AGAATACGTGATTCAGTACAACCCAGAAGATCCGACATCCAACGACACCTTTGAAATCCACTCATGCTG  
ACTGGCAACGTGGTACTGAGGAAAAGACTCAACTATGAGGATAAGACTCGCTACTATGTCATCATCCAAG  
CAAATGACCGTGCACAAAATCTGAATGAGAGGCGAACAACCACCACCCTCACAGTAGATGTTCTAGA  
TGGAGTAGACCTGGGACCTATGTTTCTGCCTTGTTCTTGTGCCAAACACACGTGACTGTCGTCCACTC  
ACCTACCAAGCTGCCATTCTGAACTGAGGACTCCGGAAGAAGTGAACCTATTTTGGTGACACCACCTA  
TCCAAGCCATTGATCAGGACCGAAACATCCAACCACCTATGATCGACCTGGCATCCTCTACTCCATCCT  
TGTCGGCACCCCTGAGGATTACCCCGCTTCTTCCATATGCATCCAGGACTGCAGAAGTCACTCTCCTG  
GAGCCAGTAAACAGAGACTTCCATCAAAAATTTGATTTGGTTATTAAGGCTGAGCAGGACAATGGCCACC  
CACTTCTGCCTTTGCTAGTCTGCACATCGAAATACTAGACGAAAACAATCAGAGTCCATACTTCACAAAT  
GCCAGCTATCAAGGATACATCCTGGAATCCGCCAGTGGGAGCCACCATTTCTGAGAGCTAACTTA  
ACCACTCTCTGAGAATTGTAGCTCTGGACAAAGACATAGAAGACACAAAAGATCCAGAGCTCCACCTCT  
TCCTGAATGACTACACCTCGGTCTTCACTGTGACACCCACTGGTATCACCCGCTACCTCACCTGCTTCA  
ACCTGTGGACAGGAGGAACAGCAAACCTACACCTTTCTGATAACAGCGTTTGATGGCGTGCAAGAAAGT



[View online »](#)

GAGCCAGTCGTGGTCAATATCCGAGTGATGGATGCAAATGATAACACGCCACCTTCCCTGAAATCTCT  
 ATGATGTCTATGTTTACACAGACATGAGTCTGGGGACAGCGTCAATCAGCTGACAGCGGTAGATGCTGA  
 TGAAGGCTCTAATGGGGAGATCTCTATGAAATACTGGTGGGGGCAAGGGAGACTTCGTGATCAACAAG  
 ACCACAGGGCTGGTGAGCATTGCACCAGGCGTGGAGCTGATCGTGGGACAGACGTATGCGCTCACAGTGC  
 AGGCTTCGGACAACGCCCGCTGCAGAAAAGACACAGGGATTCTCAGCCTAGGGAAGGCTCTAGACCG  
 CGAGAGCACAGACCGCTACATCTCATCGTCACAGCCTCAGATGGCAGACCGGATGGAACCTCAACTGCC  
 ACTGTGAACATAGTGGTGACGGACGTCAATGACAACGCTCCCGTGTTCGATCCCTATCTGCCCGGAACC  
 TCTCTGTGGTGGAGGAAGAAGCCAATGCCTTTGTGGGTCAAGTCCGGGCAACAGACCCAGATGCTGGGAT  
 AAACGGCCAAGTTCACACTACAGCCTGGGGAACCTCAACAACCTTCCGCATCACATCCAACGGGAGCATT  
 TACACAGCCGTGAAGCTGAACAGGGAAGCCAGGGACCACTATGAACTGGTTGTCGTGGCAACAGATGGAG  
 CAGTCCACCCTCGACATCAACTCTGACACTGTACATCAAGGTGTTGGACATTGATGATAACAGTCTGT  
 TTTTACCAATTCAACGTACACAGTTGTCGTTGAAGAGAATCTGCCAGCCGGGACCTCTTTCTTCAAATA  
 GAGGCCAAGGATGTTGACCTGGAGCCAATGTGTATATCGGATCAGAAGCCAGAAGTGAACACCTTT  
 TTGCACTGCATCCATTCACTGGAGAATTGTCTCTTCTGAGGAGTTGGATTATGAGGCTTTCCGGACCA  
 GGAGGCAAGCATCACATCTTGGTGGAGGCTTTGACATTTATGGGACTATGCCACCTGGTATAGCAACA  
 GTCACGGTAATTGTGAAGGACATGAATGACTACCTCCAGTGTTAGCAACGCATCTACAAGGGGATGG  
 TGCTCCAGATGCAGTCAAGGGGACACCAATCACCACCGTTTATGCTGAAGATGCGGACCCACCTGGGAT  
 GCCTGCAAGTAGGGTGAAGTATCGAGTGGACGACGTGCAGTTCCATACCCAGCCAGTATTTTTGATGTA  
 GAGGAAGATTCTGGAAGAGTAGTAACCCGCGTCAATCTTAATGAAGAGCCTACTACGATTTTCAAGCTGG  
 TGGTTGTGGCTTTTGTATGACGGCAACCTGTGATGTCCAGCAGTCCACGGTGAGAATCTTGTCTTACA  
 TCCTGGAGAGATCCCACGCTTACCCAAGAGGAATACAGACCTCCTCCTGTAAGTGAAGTGGCGCCAGA  
 GGGACTGTAGTTGGTGTCAATTTCTGCTGCCATTAATCAGAGCATCGTGTACTCCATTGTGGCAGGAA  
 ATGAGAAGACAAGTTTGAATCAACAATGCTACTGGGGTCACTATGTGAATTCACCATTTGGATTACGA  
 GACAAGGACAGCTATGTCTCCGGTACAAGCAGATTCTGGAAGTGGTCTTGGCAATCTCCGAGTC  
 CCTTCAAAAAGCAATACAGCTAAGGTGTACATTGAGATTCAGGATGAAAACGATACCCCCCAGTGTTC  
 AGAAGAAATTCTACATTGGAGGTGTGTCTGAAGACGCAAGGATGTTTCGCATCTGTGCTCAGAGTGAAGGC  
 CACCGACAGGGACACGGGTAATTACAGTCCATGGCCTACCGCTCATCATACCGCCGATTAAGAGGGC  
 AAAGAGGGGTTTGTGGTGAACATACACAGGTCTCATCAAGACAGCCATGCTCTCCACAATATGAGAA  
 GATCCTACTTCAAGTTTCAAGTATTGCAACTGACGACTACGGGAAGGGGTTGAGCGGGAAAGCAGACGT  
 ACTGGTCTCCGTGGTCAATCAACTGGATATGCAGGTATTGTCTCAATGTGCCCTACACTAGTGAA  
 AAGAAGATAGAAGACCTACAGAGATTTGGATCGCTACGTTGAGGCAAAATCCTGGTCCAAGTTG  
 TGGTGGAGTCCATAGGTGCCCGTCGCCATGGAGACGCCTACTCCCTAGAAGACTATAGCAAGTGCACCT  
 GACTGTCTATGCCATCGACCCGACAGACCAACAGAGCCATCGACAGAAATGAGCTTTTTAAGTTCTGGAC  
 GGCAAACTGCTCGATATCAATAAAGACTTCCAGCCGATTAACGGGGAAGGAGGGGCGATTCTGGAGATTC  
 GGACACCTGAGGCAGTGACGAGCATCAAGAAGCAGGAGAAAGCTTGGGGTACACAGAAGGGGCTTGT  
 GGCCTTGGCCTTTCATCATCATCTCTGTTGCATCCCAGCCATCTTGGTCTTCTAGTAAGTACCGACAG  
 TTTAAAGTACGCCAGGCTGAGTGACGAAGACCGCAAGAATTGAGTCTGCTATGCCTGCAGCCAAGCCTG  
 CAGTCTGTACCAGCTGCGCTGCGCCGCCCCGCCCCGCCACCACCACCAGGAGCACATCTCTA  
 TGAAGAAGTGGGAGAGCGCAATGCATAATCTTTCTTCTCTACCATTTTGAACAAAGCAGGGGAAAT  
 AACTCAGTCCCAGAAGACAGGAGCAGTATCGCGATGGGATGGCCTTTTCTCCAGTACCACTGAGTCTC  
 ATGAGCCAGTCTATGTAGAGGGACCACTTAAGGAGAGCCAGCCTAACCCAGCAAGGACGTTCTCATTGT  
 TCCTGATGAGGATAACTTAAGTACCCATAATCCCCTTTACATGGAAAGTATAGGTCAAAGGTCAACAAAC  
 TCAGACCTTACGCCACGAACAGATTTTGAAGAGCTGTTGGCACCCAGAACAAGTTAAGAGTCACTCTC  
 TGAGGGGCCCAAGAGAAAAGATCCAGAGGGTGTGGAATCAGTCTGTGAGCTTCTAGGGGCTCATGTG  
 GAAAGCCCCAAACAGGCCAGAGACCATAGACCTGGTGGAGTGGCAGATACCAATCAGAGAGCTGAATGC  
 GAAAGCGCCAGATGCCACCAAGCCAGAGAGGTAGCAGCAACGTTCTGCTGGCAACTGAAGATGCCACG  
 AGTCAGAGAAAAGAGGGGACACAGAGACCCCTAATCGTCCAGCAAACAGAGCAGCTGAAATCTCTGTC  
 TTCTGGCTCTTCTTTTCTCTTGGTCTCACTTTTCTTCTCAACTCTGCCAACGATTTCCAGAGCG  
 GTGGAACCTCGGGTCGGAACCTAATGTGGTCACTTCTCCCGCTGACTGCACCTTGGAACTTCTCCTCCTC  
 TGAGACCCCGTATTTTAACTCCTTAAGCTCTAAGAGAGAGACTCCACATGTGCATCAGATACAGAACC  
 AAAAAGGAACTCTTTGAGATCGCTCCCATCCACCTAGCATCTCTGCTCCCTCCACATCCGCTCTT  
 CCTAGACCTCCCATTTGCCTTTACCCTTTTCTTCCCTTTCTCCCTTAACCTCCTCCCCACAAC

TTGTTACATTTTCTTCCCATTTCTACACCCCTACTTCTTCTACCTCTTCCTCCTCACTGTCACT  
 TCCTCCTCCTCCTCGGCCACCAGCTCCCCGCTCTTCCACAGCCTCCTCCACGTCCATTCATCCACA  
 GACAGCATCTCTGCACCAGCTGCTAAATGCACTGCCAGTGCCACACACGCCAGAGAAACCACGTCTACGA  
 CACAGCCACCAGCATCCAACCCGAGTGGGGGGCAGAACCCACAGACATCCAAAAGGGATCCTCAGACA  
 TGTGAAAACTTGGCAGAGCTCGAGAAATCAGTGTCTAACATGTACAGTCACATAGAAAAAACTGCCCA  
 CCTGCAGATCCCTCAAACTACACACGTTTTGCCCTGCAGAGAAAACAGGCATGAAAATCACACATGACC  
 AGAGCCAGGAAACGTTGGTTAGAGTTGTTGAGGGAATTGACGTGCAACCTCACAGTCAATCAACATCTTT  
 G

ACGCGTACGCGGCCGCTCGAG - GFP Tag - GTTTAA

**Protein Sequence:**

>MG227177 representing NM\_001142737

Red=Cloning site Green=Tags(s)

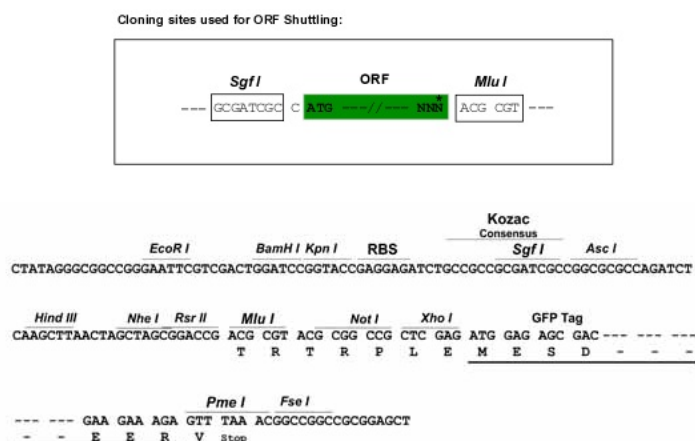
MFLQFAVWKCLPHGILIASLLVSWGQYDDDKLARGPPATIVAIDEESRNGTILVDNMLIKGTAGGPD  
 PTIELSLKDNVDYWLLDPVKQMLFLNSTGRVLD RPPMNIHSIVVQVQVKNKVGTVIYHEVRIVVRDR  
 NDNSTPFKHESYATVNELTPVGTITFTGFSGDNGATDIDDGPNQIEYVIQYNPEDPTSNDTFEIPLML  
 TGNVVLKRNLNYEDKTRYVYIIQANDRAQNLNERRTTTTLTVDVLGDGDLGPMFLPCVLPNTRDCRPL  
 TYQAAIPELRTPEELNPILVTPPIQAIDQDRNIQPPSDRPGILYSILVGTPEDYPRFFHMHPRTAELTLL  
 EPVNRDFHQKFDLVIAEQDNGHPLPAFASLHIEILDENNQSPYFTMPSYQGYILESAPVGATISESLNL  
 TTPLRIVALDKDIEDTKPELHLFLNDYTSVFTVPTGITRYLTLLQPVDREEQQYTYTFLITAFDGVQES  
 EPVVVNI RYMDANDNTPTFPEISYDVVYVYDMSPGDSVIQLTAVDADEGSNGEISYEILVGGKGFVINK  
 TTGLVSIAPGVELIVGQTYALTQASDNAPPAERSTGILSLGKALDRESTDRYILIVTASDGRPDGTSTA  
 TVNIIVVTDVNDNAPVFDPYLPRNLSVVEEENAFVGVQVRATDPDAGINGQVHYSLGNFNFLFRITNSGSI  
 YTAVKLNREARDHYELVVVATDGAHVHRHSTLTLYIKVLDIDDNSPVFTNSTYTVVVEENLPAGTSFLQI  
 EAKDVDLGANVSYRIRSEPKHLFALHPFTGELSLLRSLDYEAFDPQEAISITFLVEAFDIYGTMPPIAT  
 VTVIVKDMNDYPPVFSKRIYKGMVAPDAVKGTPITTVYAEDADPPGMPASRVRYRVDVQFPYPASIFDV  
 EEDSGRVVTRVNLNEEPTTIFKLVVVAFDDGEPVMSSSATVRILVLHPGEIPRFTQEEYRPPPVSELAAR  
 GTVVGVISAAAINQSIVYSIVAGNEEDKFGINNVTGVIYVNSPLDYETRYSYVLRVQADSLEVLANLRV  
 PSKSNTAKVYIEIQDENDHPPVFQKKFYIGGVSEDA RMFASVLRVKATDRDTGNYSAMAYRLIIPPIKEG  
 KEGFVVETYTGLIKTAMLFHNMRRSYFKFQVIATDDYDGKLSGKADVLVSVVNQLDMQVIVSNVPTLVE  
 KKIEDLTEILDYVQEQIPGAKVVVESIGARRHGDAYSLDYSKCDLTVYAIDPQTNRAIDRNELFKFLD  
 GKLLDINKDFQPYGEGGRILEIRTPEAVTSIKKRGESLGYTEGALLALAFIILCCIPAILVVLVSYRQ  
 FKVRQAECKTARIQSAMPAAKPAAPVPAAPPPPPPPPPGAHLYEELGESAMHNLFLLYHFEQSRGN  
 NSVPEDRSSHRDGMAFSSSTTESHEPAHVEGPLKESQPNPARTFSFVPDEDNLSTHNPLYMESIGQRSTN  
 SDLQPRD FEELLAPRTQVKSQSLRGPREKIQRVWNQSVSFPRRLMWKAPNRPETIDLVEWQITNQRAC  
 ESARCHPSQRGSSNVLLATEDAHESEKEGGHRDTLIVQQTEQLKSLSSGSSFSSWSHFSFSTLPTISRA  
 VELGSEPNVVTSPADCTLELSPPLRPRILNSLSSKRETPTCASDTEPKRNSFEIAPHPPSISAPLPHPPPL  
 PRPPIAF TTFPLPLSPPNPPPQLVTFSLPISTPPTSSLPLPPPLSLPPPPRPPAPRLFPPPPSTIPST  
 DSISAPAAKCTASATHARETTSTTQPPASNPQWGAEPHRHPKILRHVKNLAELEKSVSNMYSHIEKNCP  
 PADPSKLHTFCPAEKTGMKITHDQSQETLVRVVEGIDVQPHSQSTSL

TRTRPLE - GFP Tag - V

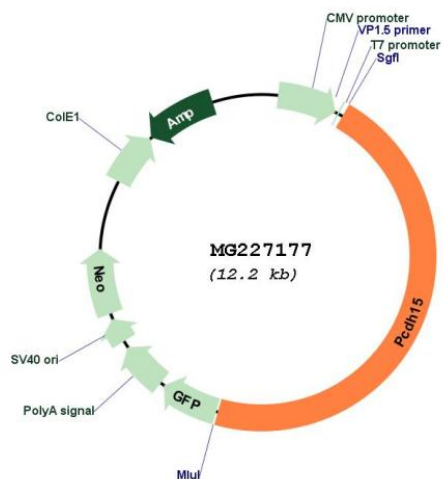
**Restriction Sites:**

SgfI-MluI

## Cloning Scheme:



## Plasmid Map:



ACCN: NM\_001142737

ORF Size: 5601 bp

<b>OTI Disclaimer:</b>	The molecular sequence of this clone aligns with the gene accession number as a point of reference only. However, individual transcript sequences of the same gene can differ through naturally occurring variations (e.g. polymorphisms), each with its own valid existence. This clone is substantially in agreement with the reference, but a complete review of all prevailing variants is recommended prior to use. <a href="#">More info</a>
<b>OTI Annotation:</b>	This clone was engineered to express the complete ORF with an expression tag. Expression varies depending on the nature of the gene.
<b>Components:</b>	The ORF clone is ion-exchange column purified and shipped in a 2D barcoded Matrix tube containing 10ug of transfection-ready, dried plasmid DNA (reconstitute with 100 ul of water).
<b>Reconstitution Method:</b>	<ol style="list-style-type: none"><li>1. Centrifuge at 5,000xg for 5min.</li><li>2. Carefully open the tube and add 100ul of sterile water to dissolve the DNA.</li><li>3. Close the tube and incubate for 10 minutes at room temperature.</li><li>4. Briefly vortex the tube and then do a quick spin (less than 5000xg) to concentrate the liquid at the bottom.</li><li>5. Store the suspended plasmid at -20°C. The DNA is stable for at least one year from date of shipping when stored at -20°C.</li></ol>
<b>RefSeq:</b>	<a href="#">NM_001142737.1</a> , <a href="#">NP_001136209.1</a>
<b>RefSeq Size:</b>	8836 bp
<b>RefSeq ORF:</b>	5604 bp
<b>Locus ID:</b>	11994
<b>UniProt ID:</b>	<a href="#">Q99PJ1</a>
<b>Cytogenetics:</b>	10 37.43 cM
<b>Gene Summary:</b>	Calcium-dependent cell-adhesion protein. Required for inner ear neuroepithelial cell elaboration and cochlear function. Probably involved in the maintenance of normal retinal function.[UniProtKB/Swiss-Prot Function]