

Product datasheet for **MG227174**

Unc13d (NM_001009573) Mouse Tagged ORF Clone

Product data:

Product Type:	Expression Plasmids
Tag:	TurboGFP
Symbol:	Unc13d
Synonyms:	2610108D09Rik; Jinx; mFLJ00067; Munc13-4
Mammalian Cell Selection:	Neomycin
Vector:	pCMV6-AC-GFP (PS100010)
E. coli Selection:	Ampicillin (100 ug/mL)



ORF Nucleotide Sequence: >MG227174 representing NM_001009573
Red=Cloning site Blue=ORF Green=Tags(s)

TTTTGTAATACGACTACTATAGGGCGCCGGGAATTCGTGCGACTGGATCCGGTACCGAGGAGATCTGCC
GCCGCGATCGCC

ATGGCGACACACCTTTCCACCCAGCGGCGTCCACTTTGCGCCAGGCCATCAAGATAAGGCGCCGCA
GGGTACAGACCTGCAGGATCCACCACCCCAAGCCACCAGGAGTCCAGGTTCAAGTCCCACCATTCTC
CCCAGAGGAGCGGGACCTGCTGTATGAGGAAGCCCTCTATACTGTCTGCACCCGCTGGGTGAGCCAGAG
CCCAACCATGTGAAGGAGGCTCGGAACTGCTGAGCTATCTGCAGGAGGCTTTCCAGGTGCAGCCTGAGG
AGCACCAGCAGATGCTCGGCGCGTCAAGGAGCTCGAGAAGCCAGTATTTTGCCTGAAGGCCACAGTGA
ACAGGCCAAGGGTATTCTGGGAAAAGATGTCAGCGGGTTCAGCGACCCCTACTGCCTGCTGGGCATCGAG
CAGAAGGTTGGTGTAGCAGAGGGCAGCCCTGTGTCCCGACGTCGGCAGAAGGCAGTGGTGAAGCACACCA
TCCCGAAGAGGAGACCCATCGCACCAAGTCAAGAGCCAGACACTTAATCCCGTCTGGGACGAGACCTT
TATCTTGGAGTTTGAAGACATAGCCAAATGCAAGCTTTACCTGGACATGTGGGACCTGGACACTGTGGAG
TCTGTACGGCAGAAGCTCGGGGAGCTCACGGACCTGCACGGGCTCCGGAGGATCTTTAAAGAAGCTCGGA
AGGATAAAGGCCAGGACGACTTTCTGGGAATGTGTTCTGAGGTTGCAGGACCTGCCTGCCGAGAGGA
CCAGTGGTTCGCTAGAGCCCTGCACAGAGACCTACCCAGACCCGCGGACGTGCCACCTTCAGTTCAG
TTCATTACAAGAGGAGGCCACGGCGCCAGCCGCTCTCAGCCAGCTACACTGTACACTTTCACCTAC
TGCAGCAGCTGGTGTCCCATGAAGTACACAGCACAGCCAGGCGGCAGTACCTCCTGGGACGCATCACTGAG
TCCCCAGGCTGTACCATCCTCTTTCTCCAGCCACTCAGAAGGACCTGTCCGACTTCCACCAAGTCCATG
GCGCAGTGGTTGGCTACAGCCGCTCTACCAGAGCCTGGAGTTCCCCAGCAGCTGCCTCCTGCACCCCA
TCACCAGCATAGAGTACCAGTGGATCCAGGGCCGACTCAAAGCAGAACAGCGGGAGGAGCTGGCCACCTC
CTTCACATCCCTGTTGGCTATGGCCTCTCCCTTATCCGGAAGTTCGCTCCGCTTTCCCTCTGTCTGT
TCTGACTCCCCATCCAGGCTGCAGTCCCTCCTCAGAGTCTTGGTCCAGATGTGCAAAATGAAGGCCTTT
GAGAAGTGTGCCAGACAGCGCTCCACTGTCCAGTGGTTTCTGAAGCTCTGCCGATGGGCACAGTTGA
GTGGTTTACCTGATGCAGAACACCATCAGCCATGGGCATCCTGGAGGCTGGCAAGGCTTGTCAAAT
CTGGTACAGGACGTCATGGGTGATCTGTACCAGTGTGTCGACATGGAACAAGATTTCCACAATGTCC
TCAAGATAGACCTGTTCTCCATGGCCTTCTGGAAGTGCAGTGGGCTGGTGGCCAAAGAGGGTACAGGACCA
CACGGTGGCGGCTGGCAACCTTGTCTCCAGATATTGGAGAGAGTCTGTTTCAGCTGTATGTCAGCCTG
AAGGAGCTCTGCCAGTGGCCCTGTCCCTCAGACAGCCGTAAGTCTGGCCCTGGATGGCTTCCACC
GCTGGTTTACGCCAGCCATCCCTTCTGGCTGCAGAAGACTTACAGTGTGCTCTGGAGCGGGTGCAGCG
TGCCGTACAGATGGACAGCTGGTACCCCTGGGCGAAGTACCAAGCACAGCACTTCTGCCGTGGATCTG
TCTACCTGCTTGGCCAAATTAGCCACACTGCCCGGACAGTGGACTGGCCAGACCCAGAGGAGGCGCTTCA
TGACTACTGTAAGTTCGTGGAGGACAGTGGCGGCTGGCCCTGGTCTACTGTAGCCTTATAAAGGCCCG
GGCCCGAGAGCTGTCTGCAAGTTCAGAAGGACCAGAGCCAGGCAAGTGCATGCTGTGTGGTGGTAAAT
AACATGGAGCAACTACGGTTGATCATCGACAAGTACCCACTCAGCTGGCATGGGAGGCATTGGAGCAGC
GGGTGGGGCGCTGTTGGAGGAGGGCAGCTGCAGAACAGTACATGCTCAGCTGCAGGGCGCCTTGGC
GGGCTGGGCCATGAGATCCGTAAGTGTCCGTACCCTGGCAGAGCAGTGGAGGTGGCATTGCCACA
CACATCCAGAACTCATTGGCGTCAAGGAGTCTGTTCTGCCGAGGATGCCATTCTGCCCTGATGAAAT
TCTTGGAGGTGAAGCTTTGCTACATGAACCAACCTGGTCCAGGAGAAGTTCAGCAGCCTTCTGACTCT
GTTGTGGACCCACACGCTTACTGTGCTGGTGGAGGTGGCTTCTCCAGCGTAGCTCGTCCCTGGCTTCT
GGCAGGCTGAAGTTCGCCCTTCCAGGCTGTGCTTCCAGCTGAGGCTGTGGTCTGCCACCAG
AGGCCCTGCACACAGACACTTCCAGGCTCTGCAGAAGCAGCTGGAGCTGCAGGCGGCTCCAGCCGGGA
GCTTATCCAGAAGTACTTCTGCAGCGAATCCAGCAGCAGGCGGAAACCACTTCTGAGAGGCTGGGCGCA
GTCACCGTCAAGGTCTCTACCGCGCTCTGAGCAGAGGCTTCGCGTGGAACTGCTCAGTGTCTTACGCC
TGCTGCCCTGGACTCCAATGGTCCAGTACCCCTTGTTCAGTTGACACTGGAACCCAGACATGAATT
CCCTGAAGTGGCCCCGGGAGACCCAGAAGCACAAGAAGGAAGTTCACCCACTCTTTGATGAGACCTTT
GAATTCCTGGTGCCTGCTGAGCCTTGCCAAAAAGCCTGGGCATGCCTCCTGCTCACTGTGCTGGACCAG
ACAGACTGGGAGCAGACGACCTGGAGGGAGAGGCTTCTTACCGCTCTGCAGGGTACCTGGACTGACGGA
CTGTGCAGAGCCGGGGAAGCCTCAAATGCGCCTGCCTCTCACATACCCTGCCCCAACGGGGACCCA
ATTCTGCGGCTGTTGGAGAGCCGGAAGGGGATCGCGAGGCCAGGCTTGTAAAGCTGAGGAGGCAGA
GAGCCAAGCAGGCTCCCAACATGCCCCG

ACGCGTACGCGGCCGCTCGAG - GFP Tag - GTTTAA

Protein Sequence:

>MG227174 representing NM_001009573
 Red=Cloning site Green=Tags(s)

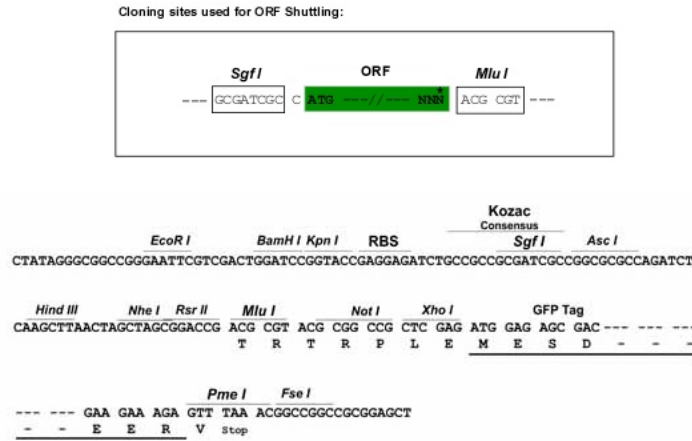
MATHLSHPQRRPLLRQAIRRRRVRDLQDPPQATQEVQVQSHHFSPEERDLLYEEALYTVLHRLGQPE
 PNHVKEASELLSYLQEFQVQPEEHQMLRRVRELEKPVFCLKATVKQAKGILGKDVSGFSDPYCLLGIE
 QKVGVAEGSPVSRRRQKAVVKHTIPEEETHRTQVKSQTLNPVWDETFILEFEDIANASFHLDMDLDTVE
 SVRQKLGELTDLHGLRRIFKEARKDKQDDFLGNVLRQLDLRCREDQWFFLEPCTETYPDRGQCHLQFQ
 FIIKRRATAASRSQPSYTVHFHLLQQLVSHEVTQHAGSTSWDASLSPQAVTILFLHATQKDL SDFHQSM
 AQWLAYSRLYQSLEFPSSCLLHPITISIEYQWIQGRKAEQREELATSFTSLLAYGLSLIRKFRSVFPLSV
 SDSPSRLQSLLRVLVQMCKMKAFGELCPDSAPLSQLVSEALRMGTVEWFHLMQHHQPMGILEAGKALLN
 LVQDVMGDLYQCRRTWNIKIFHNVLKIDLF SMAFLELQWL VAKRVQDHTVAAGNLVSPDIGESLFQLYVSL
 KELCQLGPVPSDSREVLALDGFHRWFQPAIPSWLQKTYSVALERVQRAVQMDTLVPLGELTKHSTSAVDL
 STCFAQISHTARQLDWPDEEAFMITVKFVEDTCRLALVYCSLIKARARELSAVQKQSQAADMLCVVVN
 NMEQLRLIIDKLPQLAWEALEQRVGAVLEEGQLQNTLHAQLQGALAGLGHIRTGVRTLAEQLEVGIAT
 HIQKLGIVKESVLPEDAILPLMKFLEVKLCYMNTNLVQENFSSLLTLLWHTLTVLVEVASSQRSSSLAS
 GRLKVALQNLVCFHAEGCGLPPEALHTDTFQALQNDLELQAASSRELIQKYFCRSRIQQQAETTSERLGA
 YTVKVSYRASEQRLRVELL SASSLLPLDSNGSSDPFVQLTLEPRHEFPEVAPRETQKHKKELHPLFDETF
 EFLVPAEPCQKAWACLLLTVLDHDLGADDLEGEAFLPLCRVPGLTDCAEPEGAPQMRLPLTYPANPNDP
 ILRLLSRKGDREAQAFVKLRRAKQASQHAP

TRTRPLE - GFP Tag - V

Restriction Sites:

SgfI-MluI

Cloning Scheme:



ACCN:

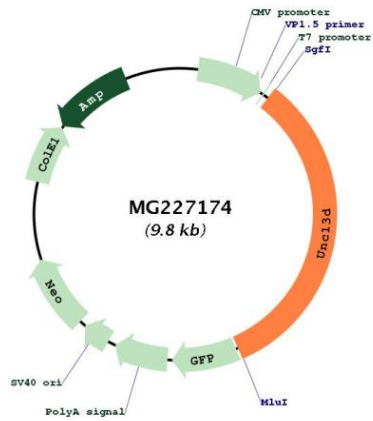
NM_001009573

ORF Size:

3249 bp

OTI Disclaimer:	The molecular sequence of this clone aligns with the gene accession number as a point of reference only. However, individual transcript sequences of the same gene can differ through naturally occurring variations (e.g. polymorphisms), each with its own valid existence. This clone is substantially in agreement with the reference, but a complete review of all prevailing variants is recommended prior to use. More info
OTI Annotation:	This clone was engineered to express the complete ORF with an expression tag. Expression varies depending on the nature of the gene.
Components:	The ORF clone is ion-exchange column purified and shipped in a 2D barcoded Matrix tube containing 10ug of transfection-ready, dried plasmid DNA (reconstitute with 100 ul of water).
Reconstitution Method:	<ol style="list-style-type: none">1. Centrifuge at 5,000xg for 5min.2. Carefully open the tube and add 100ul of sterile water to dissolve the DNA.3. Close the tube and incubate for 10 minutes at room temperature.4. Briefly vortex the tube and then do a quick spin (less than 5000xg) to concentrate the liquid at the bottom.5. Store the suspended plasmid at -20°C. The DNA is stable for at least one year from date of shipping when stored at -20°C.
Note:	Plasmids are not sterile. For experiments where strict sterility is required, filtration with 0.22um filter is required.
RefSeq:	NM_001009573.2 , NP_001009573.2
RefSeq Size:	3967 bp
RefSeq ORF:	3252 bp
Locus ID:	70450
UniProt ID:	B2RUP2
Cytogenetics:	11 E2
Gene Summary:	Plays a role in cytotoxic granule exocytosis in lymphocytes. Required for both granule maturation and granule docking and priming at the immunologic synapse. Regulates assembly of recycling and late endosomal structures, leading to the formation of an endosomal exocytic compartment that fuses with perforin-containing granules at the immunologic synapse and licenses them for exocytosis (By similarity). Regulates Ca(2+)-dependent secretory lysosome exocytosis in mast cells.[UniProtKB/Swiss-Prot Function]

Product images:



Circular map for MG227174