

## Product datasheet for **MG227170**

### Cyld (NM\_173369) Mouse Tagged ORF Clone

#### Product data:

Product Type:	Expression Plasmids
Product Name:	Cyld (NM_173369) Mouse Tagged ORF Clone
Tag:	TurboGFP
Symbol:	Cyld
Synonyms:	2010013M14Rik; 2900009M21Rik; C130039D01Rik; CDMT; CYLD1; EAC; mKIAA0849
Mammalian Cell Selection:	Neomycin
Vector:	pCMV6-AC-GFP (PS100010)
E. coli Selection:	Ampicillin (100 ug/mL)



[View online »](#)

ORF Nucleotide  
Sequence:

>MG227170 representing NM\_173369  
 Red=Cloning site Blue=ORF Green=Tags(s)

TTTTGTAATACGACTCACTATAGGGCGGCCGGGAATTCGTCGACTGGATCCGGTACCGAGGAGATCTGCC  
 GCCCGCATCGCC

ATGAGTTCAGGCCTGTGGAGCCAAGAGAAAGTTACTTCACCCACTGGAAGAACGGATTTTTTATCTGC  
 TTCTTCAAGAATGCAGTGTAAACAGACAAACAACTCAGAAGCTGCTGAAAGTACCCAAAGGGAGTATAGG  
 ACAGTACATCCAAGACCGTTCTGTGGGGCATTCAAGAGTTCCTTCCACAAAAGGCAAGAAAAATCAGATT  
 GGATTAATAAATCTTGGAGCAACCGCATGCAGTTCTGTTTGTGATGAAAAGGATGTTGTAGAAAATAAATG  
 AAAAATTCACAGAGTTACTGTTGGCAATTACCAACTGTGAGGAGAGGCTCAGCCTATTTAGAAAACAGACT  
 CCGACTAAGTAAAGGCCTCCAGGTAGACGTGGGCAGTCTGTGAAAGTACAGCTGCGATCTGGGGAAGAG  
 AAATTTCCAGGAGTTGTACGCTTCAGAGGACCTTTATTAGCGGAGAGGACGGTGTGGGGATTTTCTTTG  
 GAGTAGAATTATTGGAAGAAGTTCGTGGTCAAGGTTTACGGATGGGGTATATCAAGGGAAGCAGCTTTT  
 CCAGTGTGATGAGGACTGTGGCGTGTGTTGTCATTGGACAACTAGAATTATAGAAGATGATGACAAT  
 GGATTGAAAAGTATTTTGCAGGCCAGGAGATACAATGCAGGTTGAACCTCCCCCTTTGAAAATAAAT  
 CCAGAGTTTCTTTGAAGTTGGAGAAAAGTACAGAACTGGAACAGTAATATTCTGTGATGTTTTACCAGG  
 AAAAGAGAGTCTAGGATATTTTGTGGTGTGGACATGGATAACCCCTATTGGCAACTGGGATGGAAGGTTT  
 GATGGAGTACAGCTCTGTAGTTTGAAGTGTGAAAAGTACAATCTCCTGCACATCAATGACATCATCC  
 CAGATAGCGTGACACAGGAAAGGAGGCCTCCAAAACCTGCCTTTATGTCAAGAGGTGTAGGTGACAAAGG  
 TTCATCTAGTCATAATAAACCAAGGTTACAGGATCTACCTCAGACCCTGGAAGTAGAAACAGATCTGAA  
 TTATTTTATACCTTAAATGGGTCATCTGTTGACTCACAACTCAAGTCCAAAATCCATGGTACATTTG  
 ATGAAGTTGCAGAAGACCCTGCAAGACTACTACAGAGATGTCTTCGGACTTCGGACATTCATCTCCTCC  
 ACCGCAGCCTCCTTCCATGAACTCCTTGCTAGCGAGAACAGATTCCACTCCTTACCCTTCAGCCTGACA  
 AAGATGCCAATACTAATGGCAGCATGGCTCATAGTCCACTCTCTGTGTCAGTGCAGTCTGTGATGGGGG  
 AGCTGAACAGCACACCTGTCCAGGAGAGTCCACCCTTGCCCATCTCTTCTGGGAATGCACACGGGCTAGA  
 GGTGGGCTCACTGGCTGAAGTAAAAGAGAACCCCGTCTATGGGGTTATCCGTTGGATTGGCCAGCCA  
 CCAGGGCTCAGTGACGTGCTAGCTGGACTGGAAGTGAAGATGAATGCGCAGGCTGTACAGATGGAACCT  
 TCAGGGGCACGCGGTATTTACGTGTGCCCTGAAGAAGGCACTGTTTGTGAAACTGAAGAGCTGCAGACC  
 GGACTCTAGGTTTGCATCCTTGCAGCCTGTTTCCAATCAAATGAAAGGTGTAACCTTTTAGCATTTGGG  
 GGCTATTTAAGTGAAGTAGTAGAAGAAAATACTCCACCTAAAATGAAAAGGAAGGTTTAGAGATAATGA  
 TTGAAAAGAAAGGCATCCAGGGCCATTACAATTTCTGTTACTTAGACTCAACTTTATTTCTGCTTATT  
 TGCTTTTAGTTCTGCCCTGGACTGTGTTACTTAGACCCAAAGAGAAGATGATATAGAGTATTACAGT  
 GAGACTCAGGAGCTACTGAGGACAGAGATAGTCAATCCTCTGAGAATATATGGATATGTGTGGCCACAA  
 AGATTATGAAACTGAGGAAAATACTTGA AAAAGTTGAGGCTGCATCAGGTTTTACCTCTGAAGAAAAAGA  
 TCCTGAAGAAATCTTAAATACCTGTTTCATGATATTTAAGGGTTGAACCATTGTTAAAAATAAGATCA  
 GCAGGTCAAAAAGTTCAAGACTGTAACCTCTATCAAATTTTTATGAAAAAAATGAGAAAGTTGGAGTAC  
 CCACAATTCAGCAGTTATTAGAATGGTCTTTTATCAACAGCAACCTGAAATTTGCAGAGGCACCATCATG  
 CTTGATTATCCAGATGCCTCGGTTTGGAAAAGACTTAAACTATTTAAAAAAATTTTTCTTCCCTGGAA  
 TTAATATAACAGATTTACTTGAAGACTCCAGGCAGTGCCGCATCTGTGGAGGACTTGCATGTACG  
 AGTGCAGGGAGTCTATGACGATCCGGACATCTCAGCTGGGAAGATCAAGCAGTTCTGTAAGACCTGCAG  
 CACTCAGGTTACCTTCAATCCAGGAGGTTGAATCATTCTTATCATCCAGTATCACTTCCCAAAGACTTG  
 CCTGACTGGGACTGGAGACACGGCTGCATCCCCTGTCAGAAGATGGAGTTATTTGCTGTTCTCTGCATAG  
 AAACGAGCCACTATGTTGCTTTTGTGAAGTATGGGAAGGATGACTCTGCCTGGCTTTTCTTTGACAGCAT  
 GGCGGATCGAGATGGTGGTCAAGTGGCTTCAACATCCACAAGTACGCCCTGCCAGAAGTGGGAGAG  
 TACTTGAAGATGTCTCTGGAGGACCTGCACTCTTTGGATTCCAGAAGGATCAAGGCTGTGCGCGCAGAC  
 TTCTTTGGCATGCATACATGTGCATGTACCAGAGTCCAACCATGAGCCTGTACAAA

ACGCGTACGCGGCCGCTCGAG - GFP Tag - GTTTAA

Protein Sequence: >MG227170 representing NM\_173369  
 Red=Cloning site Green=Tags(s)

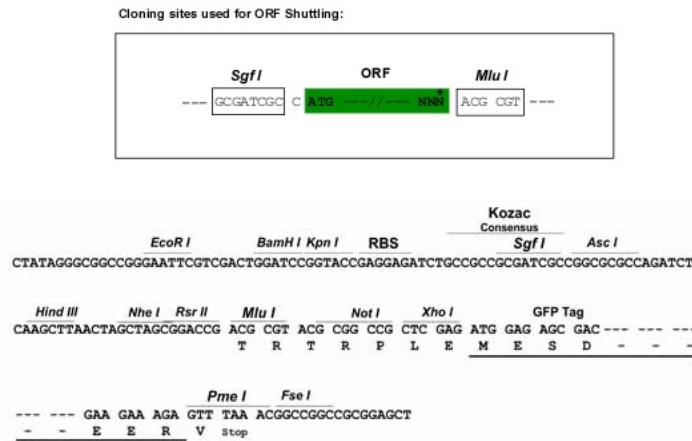
MSSGLWSQEKVTSPLYWEERIFYLLQECVTDKQTQKLLKVPKGSIGQYIQDRSVGHSRVPSTKGKKNQI  
 GLKILEQPHAVLFVDEKDVVEINEKFTELLALITNCEERLSLFRNRLRLSKGLQVDVGVSPVKVQLRS  
 GEEKFFPGVVRFRGPLLAERTVSGIFFGVELLEEGRGQGF TDGVYQKQLFQCEDEDCGVFVALDKLELIEDDDN  
 GLESDFAGPGD TMQVEPPPLEINSRVSLKVGESTESGTVIFCDVLPGKESLGYFVGVDMDNPIGNWDGRF  
 DGVQLCSFASVESTILLHINDIIPDSVTQERRPKLAFMSRGGVGDGSSSHNKPKVTGSTSDPGSRNRSE  
 LFYTLNGSSVDSQQSKSKNPWYIDEVAEDPAKSLTEMSSDFGHSSPPPQPPSMNSLSENRFHSLPFLSLT  
 KMPNTNGSMAHSPLSLSVQSVMGELNSTPVQESPLPISSGNAHGLEVGS LAEVKENPPFYGVIRWIGQP  
 PGLSDVLAGLELEDECACTDGTFRGTRYFTCALKKALFVKLSCRPSRFASLQPVSNQIERCNSLAFG  
 GYLSEVVEENTPPKMEKLEIMIGKKKGIQGHYNSCYLDSTLFLCLFAFSSALDVLRLRPKEKNDIEYYS  
 ETQELLRTEIVNPLRIYGYVCATKIMLKRKILEKVEAASGFTSEEKDPPEEFLNILFHDILRVEPLLKIRS  
 AGQKVQDCNFYQIFMEKNEKVGPTIQQLLEWSFINSNLKFAEAPSCLIIQMRFKDFKLFKKIFPSLE  
 LNIITDILLEDTPRQCRI CGGLAMYECRECYDDPDISAGKIKQFCKTCTSTQVHLHPRRLNHSYHPVSLPKDL  
 PDWDWRHGCI PCQKME LFAVLCIETSHYVAFVKYKGDSDAWLFFDSMADRGGQNGFNIPQVTPCPEVGE  
 YLKMSLEDLHSLDSRRIQGCARRLLCDAYMCMYQSPTMSLYK

TRTRPLE - GFP Tag - V

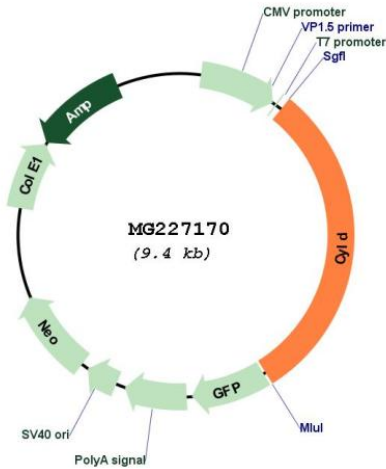
Restriction Sites:

SgfI-MluI

Cloning Scheme:



Plasmid Map:



ACCN: NM\_173369

ORF Size: 2856 bp

OTI Disclaimer: The molecular sequence of this clone aligns with the gene accession number as a point of reference only. However, individual transcript sequences of the same gene can differ through naturally occurring variations (e.g. polymorphisms), each with its own valid existence. This clone is substantially in agreement with the reference, but a complete review of all prevailing variants is recommended prior to use. [More info](#)

OTI Annotation: This clone was engineered to express the complete ORF with an expression tag. Expression varies depending on the nature of the gene.

Components: The ORF clone is ion-exchange column purified and shipped in a 2D barcoded Matrix tube containing 10ug of transfection-ready, dried plasmid DNA (reconstitute with 100 ul of water).

Reconstitution Method:

1. Centrifuge at 5,000xg for 5min.
2. Carefully open the tube and add 100ul of sterile water to dissolve the DNA.
3. Close the tube and incubate for 10 minutes at room temperature.
4. Briefly vortex the tube and then do a quick spin (less than 5000xg) to concentrate the liquid at the bottom.
5. Store the suspended plasmid at -20°C. The DNA is stable for at least one year from date of shipping when stored at -20°C.

RefSeq: [NM\\_173369.3](#)

RefSeq Size: 8013 bp

RefSeq ORF: 2859 bp

Locus ID: 74256

UniProt ID: [Q80TQ2](#)

Cytogenetics: 8 C3

**Gene Summary:**

This gene encodes a protein that is a member of the ubiquitin C-terminal hydrolase subfamily of the deubiquitinating enzyme family. Members of this family catalyze the removal of ubiquitin from a substrate or another ubiquitin molecule and thereby play important roles in regulating signaling pathways, recycling ubiquitin and regulating protein stability. This protein removes ubiquitin from K-63-linked ubiquitin chains from proteins involved in NF-kappaB signaling and thus acts as a negative regulator of this pathway. In humans mutations in this gene have been associated with cylindromatosis, an autosomal dominant predisposition to tumors of skin appendages. In mouse deficiency of this gene impairs thymocyte development and increases susceptibility to skin and colon tumors. A pseudogene of this gene has been identified on chromosome 1. Alternative splicing results in multiple transcript variants that encode different protein isoforms. [provided by RefSeq, Jan 2013]