

Product datasheet for **MG227158**

Cntn1 (NM_007727) Mouse Tagged ORF Clone

Product data:

Product Type:	Expression Plasmids
Product Name:	Cntn1 (NM_007727) Mouse Tagged ORF Clone
Tag:	TurboGFP
Symbol:	Cntn1
Synonyms:	AW495098; CNTN; F3cam; usl
Mammalian Cell Selection:	Neomycin
Vector:	pCMV6-AC-GFP (PS100010)
E. coli Selection:	Ampicillin (100 ug/mL)
ORF Nucleotide Sequence:	>MG227158 representing NM_007727 Red=Cloning site Blue=ORF Green=Tags(s)

TTTTGTAATACGACTCACTATAGGGCGCCGGGAATTCGTCGACTGGATCCGGTACCGAGGAGATCTGCC
GCC**CGATCGCC**

ATGAAATGCCATTGCTGGTCAGCCATCTCCTGCTAATCTCCTAACATCTTGTCTAGGAGACTTTACCT
GGCACAGAAGATATGGTCATGGAGTGTCTGAGGAGGACAAAGGATTTGGGCCATTTTTGAAGAGCAGCC
AATCAATACCATTTACCCAGAAGAGTCACTGGAAGGAAAAGTGTCACTCAACTGCCGGGCACGCCAGC
CCATTTCCAGTTACAAATGGAGAATGAATAACGGGGACGTGGACCTGACAAACGATCGGTACAGTATGG
TCGGAGGAAACCTTGTTATCAACAACCCGGACAAACAGAAAGACGCTGGGGTGTACTACTGCCTGGCATC
CAACAACCTACGGAATGGTCAGGAGCACGGAGGCAACTCTGAGCTTCGGGTATCTCGACCCCTTCTCCTCC
GAGGAGCGTCCGGAAGTGAAGGTGAAGGAAGGGAAGGGCATGGTCTTCTGTGATCCTCCCTACCACT
TCCCAGATGATCTTAGCTACCGTGGCTTCTGAATGAATTTCTGTATTTATCACCATGGATAAGCGAAG
ATTTGTGTCTCAGACCAACGGCAATCTCTATATCGCAATGTGCGAGTCTTCTGACAGAGGCAACTACTCC
TGCTTTGTGTCCAGTCTTCTATTACAAAGAGTGTGTTCAAGCAAGTTTATCCCCCTATTCCGATTCCTG
AACGAACAACAAAGCCATATCCTGCTGATATTGGTGCAGTTCAAGGACATATACCATGATGGGCCA
AAATGTGACTTTAGAGTGTTCGCTCTAGGGAACCCTGTTCTGATATCCGGTGGCGGAAGGTGCTAGAA
CCAATGCCAGCACTGCCGAGATAAGCAGTCAAGGGCTGTCTCAAGATCTTCAACATCCAGCTAGAAG
ATGAAGGCCTCTACGAGTGTGAGGCTGAGAACATCCGGGGAAAGGACAAGCACCAGGCAAGAATCTATGT
TCAAGCGTTTCTGAGTGGGTAGAGCATATCAATGACACTGAGGTGGACATAGGCAGTGACCTCTACTGG
CCTTGATAGCCACAGGGAAGCCATTCTACCATCAGGTGGCTGAAAAATGGATACTCGTATCACAAAG
GGGAACCTGAGACTGTATGATGTGACTTTTGAAAAATGCCGGGATGTACCAGTGCATAGCAGAAAACGCGTA
TGGGTCCATTTATGCCAACGCTGAGCTCAAGATCCTGGCTTTAGCTCCAACCTTTGAAATGAATCCTATG
AAGAAAAAGATCTGGCTGCGAAAGGTGGAAGGGTTGTCATTGAATGTAACCCAAGGCCGACCAAAAAC
CCAAGTTTTCATGGAGCAAAGGGACAGAGTGGCTCGTCAACAGCAGCAGAATACTCATATGGGAAGATGG
TAGCTTGGAAATCAATAATTACAAGAAATGATGGTGAATCTATACATGCTTTGCAGAAAATAACAGA



[View online »](#)

GGAAAAGCTAATAGCACTGGGACTCTGGTGATCACAAATCCCACACGAATTATTTTGGCCCAATCAATG
 CTGACATCACTGTTGGGGAAAATGCCACCATGCAGTGTGCTGCGTCTTTCGATCCTGCCTTGGACCTCAC
 GTTTGTGTGGTCTTCAATGGCTACGTGATTGACTTTAACAAAGGAAATTACGCATATCCATTACCAGAGG
 AATTTTATGCTCGACGCCAATGGGGAACGTCTATCCGAAATGCGCAGCTGAAACACGCAGGCCGGTACA
 CGTGCACGGCGCAGACAAATCGTGGACAATTCCTCGGCTCCGCTGACCTTGTGTTGAGGCCCCAGG
 TCCCCAGGAGGCTGAGAATAGAAGACATCAGAGTACCTCTGTGGCACTGACTTGGAGCCGTGGTTCC
 GACAATCACGCCCTATCTCAAATACACGATCCAGACCAAGACGATTCTCTCAGATGACTGGAAGATG
 CGAAGACAGATCCCCAATCATTGAAGGGAACATGGAGTCAGCTAAAGCAGTGGATTGATCCCTGGAT
 GGAGTATGAATTCGAGTGGTGGCGACCAATACTTTAGGGACGGGAGAGCCAGCATAACCCTCAAACAGG
 ATCAAACAGACGGTGTGCACCAAATGTGGTCCCTCAGATGTAGGCGGTGGGGCGGAACCAACAGAG
 AGCTGACAATAACGTGGGCGCTTTGTGAGAGAGTACCATTACGGTAACAATTTTGGTTACATAGTGGC
 GTTTAAGCCATTTGATGGAGAAGAGTGAAGAAAGTACTGTGACTAACCAGACACTGGCCGCTACGTC
 CACAAAGATGAGACCATGACCCCTCCACCGCTTCAAGTCAAAGTCAAAGCCTTCAACAATAAAGGAG
 ATGGGCCCTACAGCCTCGTAGCTGTCACTCTGCACAAGATGCTCCAGTGAAGCCCCACAGAGGT
 AGGGGTCAAAGTGTATCATCTCTGAGATATCTGTCCATTGGAAGCATGTGTTAGAGAAAATTGTGAA
 AGCTATCAGATTCGGTACTGGGCTGGGCATGACAAAGAAGCAGCCGCACACAGAGTTCAGGTCACCAGCC
 AGGAGTACTCAGCCAGACTGGAGAACCTTCTTCCCGACACCCAGTACTTCAATGAAGTGGGAGCCTGCAA
 CAGTGTGGATGCGGACCTTCCAGTGTGTGATCGAGACCTTACCAGAAAAGCCCTCCTAGCCAAACCA
 CCAAGGATCATCAGTTCGGTGGATCTGGCTCACGATATATAATCACATGGGATCACGTTGTGGCACTAT
 CCAATGAATCTACTGTGACAGGCTACAAGATACTATAGACCGGATGGCCAACATGACGGCAAGCTGTT
 CTCAACCATAAACTCCATAGAAGTCCCATCCCCAGAGACGGAGAGTATGTTGTGAGGTTTCGAGCA
 CACAGCGACGGGGAGACGGAGTTGTGTCTCAAGTCAAATTTTCAGGCGTGTCCACGCTGTCTTCGAGCC
 TCCTCAGCTTGTCTGCCCTCCCTTGGCTTTCTGTCTACTCGGAATTC

AGCGGACCGACGCGTACGCGGCCGCTCGAG - GFP Tag - GTTTAA

Protein Sequence:

>MG227158 representing NM_007727
 Red=Cloning site Green=Tags(s)

MKMPLLVSHLLLISLTSCLGDFTHRRYGHVSEEDKGFPIFEEQPINTIYPEESLEKVS LNCRARAS
 PFPVYKWRMNGDVDLTNDRYSMVGGNLVINNPKQKQDAGVYYCLASNNYGMVRSTEATLSFGYLDPFPP
 EERPEVKVKEGKGMVLLCDPPYHFPDDL SYRWLLNEFPVITMDKRRFVSQTNGNLYIANVESSDRGNYS
 CFVSSPSITKSVFSKFIPLIPIPERTTKPYPADIVVQFKDIYTMGQNVTL ECFALGNPVPDIRWRKYLE
 PMPSTAEISTSGAVLKIFNIQLEDEGLYECEAENIRGKDKHQARIYVQAFPEWVEHINDTEVDIGSDLYW
 PCIATGKPIPTIRWLKNGYSYHKGELRLYDVT FENAGMYQCI AENAYGSIYANAELKILALAPT FEMNPM
 KKKILAAGGRVIECKPKAAPKPKFSWSKGTEWL VNSSRILIWEDGSLEINNITRNDGGIYTCFAENNR
 GKANSTGLVITNPTRII LAPINADITVGENATMQCAASFDPALDLTFVWSFNGYVIDFNKEITHIHYQR
 NFMLDANGELLIRNAQLKHAGRYTCTAQTIVDNSSASADLVVRGPPGPPGLRIEDIRATSVALTWSRGS
 DNHSPI SKYTIQTKTILSDDWDAKTDPP IIEGNMESAKAVDLIPWMEYEFRRVATNTLGTGEPSPSNR
 IKTDGAAPNVAPSDVGGGGT NRELITWAPLSREYHYGNNGFYIVAFKPFDGEEWKVTVTNPDTGRYV
 HKDETMTPSTAFQVKVKA FNKGDGPYSLVAVINSAQDAPSEAPTEVGKVLSSSEISVHWKHVLEKIVE
 SYQIRYWAGHDKEAAAHRVQVTSQEYSARLENLLPDTQYFIEVGACNSAGCGPSSDVIETFRKAPPSQP
 PRIISSVRSRYSRIITWDHVVALSNESTVTGYKILYRDPDGHDKL FSTHKHSIEVPIPRDGEYVVEVRA
 HSDGGDVVSQVKISGVSTLSSSLLSLLLPSLGLVYSEF

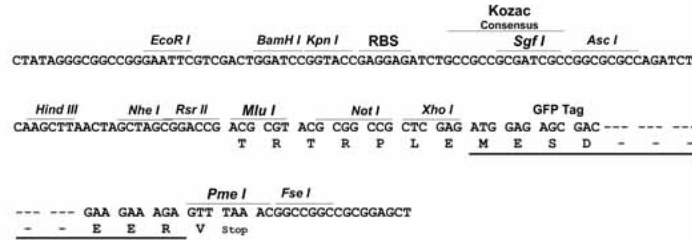
SGPTRRRLE - GFP Tag - V

Restriction Sites:

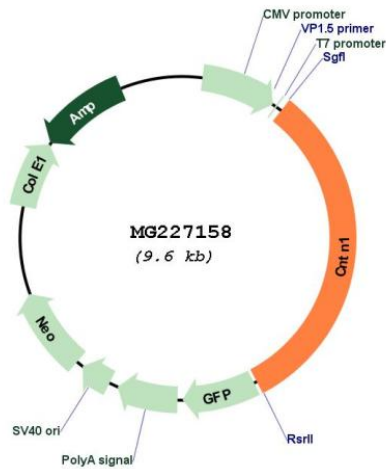
Sgfl-RsrII

Cloning Scheme:

Cloning sites used for ORF Shuttling:



Plasmid Map:



ACCN: NM_007727
 ORF Size: 3060 bp

OTI Disclaimer:	Due to the inherent nature of this plasmid, standard methods to replicate additional amounts of DNA in E. coli are highly likely to result in mutations and/or rearrangements. Therefore, OriGene does not guarantee the capability to replicate this plasmid DNA. Additional amounts of DNA can be purchased from OriGene with batch-specific, full-sequence verification at a reduced cost. Please contact our customer care team at custsupport@origene.com or by calling 301.340.3188 option 3 for pricing and delivery.
	The molecular sequence of this clone aligns with the gene accession number as a point of reference only. However, individual transcript sequences of the same gene can differ through naturally occurring variations (e.g. polymorphisms), each with its own valid existence. This clone is substantially in agreement with the reference, but a complete review of all prevailing variants is recommended prior to use. More info
OTI Annotation:	This clone was engineered to express the complete ORF with an expression tag. Expression varies depending on the nature of the gene.
Components:	The ORF clone is ion-exchange column purified and shipped in a 2D barcoded Matrix tube containing 10ug of transfection-ready, dried plasmid DNA (reconstitute with 100 ul of water).
Reconstitution Method:	<ol style="list-style-type: none"> 1. Centrifuge at 5,000xg for 5min. 2. Carefully open the tube and add 100ul of sterile water to dissolve the DNA. 3. Close the tube and incubate for 10 minutes at room temperature. 4. Briefly vortex the tube and then do a quick spin (less than 5000xg) to concentrate the liquid at the bottom. 5. Store the suspended plasmid at -20°C. The DNA is stable for at least one year from date of shipping when stored at -20°C.
RefSeq:	NM_007727.2 , NP_031753.1
RefSeq Size:	5720 bp
RefSeq ORF:	3063 bp
Locus ID:	12805
UniProt ID:	P12960
Cytogenetics:	15 46.39 cM
Gene Summary:	Contactins mediate cell surface interactions during nervous system development. Involved in the formation of paranodal axo-glial junctions in myelinated peripheral nerves and in the signaling between axons and myelinating glial cells via its association with CNTNAP1. Participates in oligodendrocytes generation by acting as a ligand of NOTCH1. Its association with NOTCH1 promotes NOTCH1 activation through the released notch intracellular domain (NICD) and subsequent translocation to the nucleus. Interaction with TNR induces a repulsion of neurons and an inhibition of neurite outgrowth.[UniProtKB/Swiss-Prot Function]