

Product datasheet for **MG227139**

Dicer1 (NM_148948) Mouse Tagged ORF Clone

Product data:

Product Type:	Expression Plasmids
Product Name:	Dicer1 (NM_148948) Mouse Tagged ORF Clone
Tag:	TurboGFP
Symbol:	Dicer1
Synonyms:	1110006F08Rik; D12ErtD7e; mKIAA0928
Mammalian Cell Selection:	Neomycin
Vector:	pCMV6-AC-GFP (PS100010)
E. coli Selection:	Ampicillin (100 ug/mL)
ORF Nucleotide Sequence:	>MG227139 representing NM_148948 Red=Cloning site Blue=ORF Green=Tags(s)

TTTTGTAATACGACTCACTATAGGGCGGCCGGAATTCGTCGACTGGATCCGGTACCGAGGAGATCTGCC
GCC**CGATCGCC**

ATGGCAGGCTGCAGCTCATGACCCCTGCTTCTCACCAATGGGTCTTTCTTTGGACTGCCATGGCAAC
AAGAAGCAATTCATGATAACATTTATACCCAAGAAAATACCAGGTTGAGCTGCTGGAAGCAGCTCTGGA
CCATAACACAATTGTGTGCTTGAACACTGGCTCAGGGAAGACGTTTCATCGCGTCTGCTACCAAAGAG
CTGGCCCATCAGATCAGGGGCGACCTCAACCCGCATGCAAAAAGGACCGTGTTCCTCGTCAACTCTGCAA
ACCAGGTTGCTCAACAAGTGTGACCCGTCAGAACTCACTCGGATCTCAAGTTGGAGAGTACTCAGACCT
AGAAGTAAATGCATCTTGACAAAAGAGAGATGGAGCCAAGAGTTTACTAAGCACCAGGTTCTCATTATG
ACTTGCTATGTCGCCCTGACTGTTTTGAAAAATGGTTACTTATCACTGTGACACATTAACCTTTTGGTGT
TTGATGAGTGTACTTTCGATTCTAGACCACCCCTATCGTGAAATATGAAGCTCTGTGAGAGTTGTCC
ATCATGCCCTCGAATTTTGGGACTAACTGCTTCCATTTTAAATGGGAAATGTGATCCAGAGGAATGGAA
GAGAAGATTCAGAACTGGAGCGAATTCAGGAGTGACGCTGAGACGGCGACTGACTTGGTGGTCTGG
ACAGATACACTTCTCAGCCTTGTGAGATTGTGGTAGACTGTGGACCGTTTACTGACAGAAGTGGGCTGTA
TGAGAGATTGCTGATGGAGTTAGAAGCAGCACTGATTTTATCAATGATTGTAATGTAGCTGTACATTCA
AAGGAAAGAGATTCTACTTTGATTTCCAACAATCCTCTCAGACTGCCGTGCAGTGTGGTTGTTCTGG
GACCTGGTGTGCAGATAAAGTAGCTGGGATGATGGTAAGAGAACTTCAGAAGTACATCAAACATGAGCA
AGAGGAGTACACAGGAAGTTCCATTATTGTTTACAGACACCTGTTAAGGAAAATACACGCCCTGTGTGAA
GAGTACTTCTCACCTGCCTCACTTGACCTGAAGTATGTAACCCAAAGTCATGAACTGCTCGAGATCC
TGCGCAAATACAAGCCCTATGAGCGACAGCAGTTTGAAGTGTTGAGTGGTACAATAACAGGAATCAGGA
TAATTACGTGCTCGAGTATTCCGAGGATGACGATGATGACGAAGAAATGAAGAAAAAGAAAAGCCA
GAGACAAATTTCTTCCGTTTACCAATATTTTATGTGGGATTATTTTGTGGAAAGAAGATACACAG
CAGTTGCTCTAACAGATTGATAAAGGAAGCTGGCAAACAAGATCCAGAGCTGGCTTATATCAGCAGCAA
CTTTATAACTGGACACGGCATTGAAAGAACCAGCCTCGCAGCAAACAGATGGAGCGGAGTTCAGAAAG



[View online >](#)

CAGGAGGAGTACTTAGGAAATTCGAGCTCATGAGACCAACCTGCTCATTGCAACAAGTGTGTAGAAG
 AGGGTGTGGATATCCCAAGTGCAATTTGGTGGTTCGTTTTGATTTGCCTACAGAGTATCGATCATATGT
 CCAGTCTAAAGGACGGGCACGAGCGCCGATCTCTAATTACGTAATGTTAGCAGATACAGACAAGATAAAG
 AGCTTTGAAGAAGACCTCAAGACCTACAAAAGCTATTGAAAAGATCTTAAGGAACAAGTGTTCGAAGTCAG
 CGGATGGTGTGAGGCGGACGTCCATGCTGGTGTAGATGATGAGGATGCTTTCCCGCCATATGTGCTGAG
 GCCTGATGATGGGGTCTCGAGTCACAATCAACACTGCCATTGGACACATCAACAGATATTGTGCTCGA
 TTACCAAGTGATCCGTTTACGCATCTAGCTCCCAAATGTAGAACCAGGAAATGCCTGATGGTACATTTT
 ATTCAACTCTTTATCTTCCGATTAACCTCACCTCTTCGAGCCTCCATTGTTGGTCCACCGATGGACAGTGT
 ACGGTTGGCTGAAAGAGTGGTAGCTCTCATTTGCTGTGAAAAACTGCACAAAATTTGGTGAAGTGGATGAA
 CACTTGATGCCAGTTGGGAAAGAGACTGTTAAATATGAAGAAGAGCTGGACTTACATGACGAGGAGGAGA
 CCAGTGTTCGCGGAGACCAGGGTCCACAAAACGACGGCAGTGTACCCCAAAGCAATTCAGAGTGTCTT
 GAGGGAGAGTTACCCCAAACCGACCAGCCTTGTACCTGTATGTGATAGGAATGGTCTTAACTACCCCC
 CTCCTGTGAACTCACTTCAGGCGGCGAAGCTCTACCCACCTGAGGACACCACAAGATGCTTTGGGA
 TCCTGACAGCCAAACCCATACCTCAGATTCTCCTACTTTCTGTGTATACACGCTCTGGAGAGGTCCCAT
 ATCCATCGAGCTGAAGAAGTCTGGTTTACATTGTCTCAACAAATGCTCGAGCTGATTACAAGATTGCAC
 CAGTACATATTCTCACATATTCTCCGGCTTGAGAAGCCTGCCCTGGAGTTTAAACCTACAGGCGCGGAGT
 CAGCCTACTGTGTTCTACCTCTTAATGTTGTTAATGACTCCGGCACTTTGGACATTGACTTTAAATTCAT
 GGAGGATATTGAGAAGTCGGAAGCTCGGATAGGCATTCTAGCACCAAGTATTCAAAGGAAAACCGTTT
 GTCTTTAAGTTAGAAGATTACCAAGATGCAGTGTATTCCAAGATACCGCAATTTTGTACGCCTCATC
 GATTTTATGTAGCTGATGATATACGGATCTTACCCCACTCAGTAAATTTCTTCCCCTGAATATGAAAC
 TTTTGCAGAATATTATAAAACAAAGTATAACCTTGACCTGACCAATCTCAACCAGCCACTGCTGGATGTT
 GACCACACATCTCCAGACTGAACCTTTTGACACCTCGGCATTTGAATCAGAAGGGGAAAGCACTCCCTC
 TAAGCAGTGTGAGAAGAGGAAAGCCAAATGGGAAAGTCTGCAGAACAACAGATCCTGGTCCGGAACT
 CTGTGCTATACATCCAATCCAGCATCACTGTGGAGAAAAGCGGTTTGTCTCCCAAGCATACTGTATCGC
 CTTCACTGCCTTCTGACTGCAGAGGAACTAAGAGCTCAGACAGCCAGCGATGCTGGTGTGGGTGTGAGAT
 CACTTCCCGTGGATTTTAGATACCCTAACTTAGACTTCGGGTGGAAAAAATCTATTGATAGCAAGTCTTT
 CATCTCAAGCTGTAACCTCTGTTGGCTGAGAGTGATAATTACTGTAAGCACAGCACAACGTAGTCCCT
 GAACATGCTGCACATCAAGGTGCTACTAGACCCTCTTAGAAAACCATGACCAAATGTCTGTGAACTGCA
 AAAGGTTGCCGCTGAGTCACTGCTAAGCTCCAAAGTGAAGTTTCAACGGATCTTACAGCAATTAATGG
 TCTTTCTACAATAAAAACCTTGCCAATGGCAGTTATGATTTAGTTAACAGAGACTTTTGCCAAGGAAAT
 CAGCTGAATTACTCAAGCAGGAAATACCTGTACAACCAACTACCTCATATCCCATTGCAATTTGTACA
 ATTATGAGAACCAGCCAAAGCCAGCAATGAATGTCTCTACTGAGTAATACGTACCTTGATGGGAACGC
 TAACACATCTACCTCAGATGGAAGCCCCGCGGTGTCCACGATGCCTGCCATGATGAATGCTGTTAAAGCA
 CTCAAGGACAGGATGGACTCTGAGCAGAGCCCTTCTGTTGGTACTCCTCAAGGACTCTTGGCCCAATC
 CGGGACTGATTCTCCAGGCTTTGACACTGTCAAATGCCAGTGTGGGTTTAACTGGAGCGGCTTGAGAT
 GCTTGGCGACTCCTTTTTAAAGCATGCTATCACCACATATCTGTTTTGCACGTACCCTGATGCTCATGAA
 GGCCGCTTTTATATGAGAAGCAAAAAGGTGAGCAACTGTAACTGTATCGCCTTGGCAAGAAGAAGG
 GACTGCCAGCCGATGGTGGTGTGATATTGATCCTCTGTGAATTGGCTTCTCTGGTTATGTGGT
 AAACCAAGACAAAAGTAACTCAGAGAAGTGGGAAAAGGATGAAATGACAAAAGACTGTTGCTGGCTAAT
 GGCAAACTGGGTGAGCCTGTGAGGAGGAGGAGGACCTGACGTGGAGGGCCCCAAGGAGGAGCCGAGG
 ATGAGGACGACTTCTGGAGTATGACCAGGAGCATATCCAGTTTATAGACAGCATGCTCATGGGCTCGGG
 CGCCTTGTGAGGAAAATCTCTGTGCGCCTTCTCAGCCTCCGACTCTGCATACGAATGGAAGATGCC
 AAGAAGGCTCCTTGGGCAGTATGCCGTTTGCCTCGGCCTTGGAGTTTGTATTACAGCTCTTGGGATG
 CGATGTGCTATCTGGATCTAGCAAAGCCGTTGAAGAGGATGACTTTGTGGTAGGTTTCTGGAAATCCATC
 AGAAGAGAAGTGTGGCTGACACAGGGAAGCAGTCCATTTCTTACGACTTGCACACGGAGCAGTGCATT
 GCTGACAAGAGCATAGCGGACTGTGAGGAGCCCTGCTGGGCTGCTACTTAAACAGCTGCGGCGAGAGGG
 CTGCTCAGCTCTTCTCTGTTGCTGGGCTGAAGGTGCTCCAGTAATCAAAGGACCAGCCGGGAGAA
 GGCTTGGACCCTGCTCAGGAGAACGGAAGCAGCAACAAAAGAGCCTTTAGGGAGCTGTGCTCTCCA
 GTTGGCCACGCTCCTCTGCAGGAAAAGACTTGGAGTACGGCTGCCTGAAGATCCCAACCGAGGTGCATG
 TTGACCATCCAGACGCAGAGAAAACCTCAACCACCTGATATCTGGGTTTGAACCTTTTGAAGAAGAAAAT
 TAACTATAGATTCAAGAATAAGGCTTACTTCTGCAGGCTTTTACACACGCTCTTACCCTACAACACT
 ATCACTGATTGTTACCAGCGCTTAGAATTCCTGGGAGATGCGATTTTGGACTACCTCATAACCAAGCACC

TTTATGAAGACCCACGGCAGCATTCTCCAGGGGTCTTGACTGACTTGGCCTCTGCCCTTGCAATAACAC
 CATCTTTGCATCATTGGCTGTGAAGTATGACTACCACAAGTACTTTAAAGCTGTCTCCTGAGCTCTT
 CATGTTATTGATGACTTTGTGAAGTTTCAGCTTGAGAAGAACGAAATGCAAGGAATGGACTCTGAGCTTA
 GGAGATCCGAGGAGGATGAGGAGAAAGAAGAGGATATCGAAGTCCCAAGGCCATGGGGGACATTTTGA
 GTCTCTTGCTGGTCCATTTATATGGACAGTGGGATGTCTCTGGAGGTGGTCTGGCAGGTGTACTATCCG
 ATGATGCAGCCTCTAATAGAAAAGTTTCTGCAAAATGTGCCTCGTCTCCAGTGAGAGAATTGCTCGAGA
 TGAACCCAGAACTGCCAAGTTTAGCCAGCGGAGAGAAGTATGATGGAAAGGTCAGAGTCACCGTGGA
 AGTGGTGGGAAAGGGAAATTTAAAGGTGTTGGCCGGAGCTACAGGATCGCCAAGTCTGCTGCAGCACGA
 AGGGCCCTCCGAGCCTCAAAGCTAACAGCCTCAGGTTCTTAACAGC

ACGCGTACGCGGCCGCTCGAG – GFP Tag – GTTTAA

Protein Sequence:

>MG227139 representing NM_148948
 Red=Cloning site Green=Tags(s)

MAGLQLMTPASSPMGPFGLPWQQAIIHDNIYTPRKYQVELLEAALDHNTIVCLNTGSGKTFIAVLLTKE
 LAHQIRGDLNPHAKRTVFLVNSANQVAQVSAVRTHSDLKVGESDLEVNASWTKERWSQEFKTHQVLM
 TCYVALTVLKNLYLSDINLLVFDECHLAILDHPYREIMKLCESCPSCRILGLTASILNGKCDPEELE
 EKIQKLERILRSDAETATDLVLDRYTSQPCEIVVDCGPFDRSGLYERLLMELEAALDFINDCNVAVHS
 KERDSTLISKQILSDCRAVLVVLGPWCADKVAGMMVRELQKYIKHEQEELHRKFLFTDTLLRKIHALCE
 EYFSPASLDLYVTPKVMKLEILRKYKPYERQQFESVEWYNNRNQDNYSWSDSEDDDDDEEIEEKEKP
 ETNFPSPFTNILCGIIFVERRYTAVVLRNLIKEAGKQDPELAYISSNFITGHGIGKNQPRSKQMEAEFRK
 QEEVLRKFRAHETNLLIATSVVEEVDIPKCNLVVRFDLPTREYRSYVQSKGRARAPISNYVMLADTDKIK
 SFEEDLKTYKAIIEKILRNKCSKADGAEADVHAGVDEDAFFPPYVLRPDDGGPRVINTAIGHINRYCAR
 LPSPDFTHLAPKCRTRRELPGDTFYSTLYLPLINSPLRASIVGPPMDSVRLAERVALICCEKLHKIGELDE
 HLMPVKGKTVKYEELDLHDEEETSVPGRPGSTKRRQCYPKAIPCECLRESYKPKDQPCYLVIIGMVLTP
 LPDELNFRRRKLYPEPDTTRCFGILTAKPIPIPHFPVYTRSGEVTISIELKKSGLTSLSQMLLEITRLH
 QYIFSHILRLEKPALEFKPTGAESAYCVLPLNVVNDSTGLDIDFKFMEDIEKSEARIGIPSTKYSKETPF
 VFKLEDYQDAVIIPRYRNFDPHRFYVADVYTDLTPLSKFSPPEYETFAEYKTKYNLDLTNLNQPLLDV
 DHTSSRLNLLTPRHLNQKGLPLSSAEKRKAKWESLQNKQILVPELCAIHPIPASLWRKAVCLPSILYR
 LHCLLTAEELRAQTASDAGVGVRSPLVDFRYPNLDGFWKKSIDSKSFSSCNSSLAESDNYCKHSTTVVP
 EHAHQGATRPSLENHDQMSVNCKRLPAESPAKLQSEVSTDLTAINGLSYNKNLANGSYDLVNRDFCQGN
 QLNIFYKQEIIPVQPTTSYPIQNLNYENQPKPSNECPLLNTYLDGNANTSTSDGSPAVSTMPAMMNAVKA
 LKDRMDSEQSPSVGYSSRTLGPNGLILQALTLNASDGFNLERLEMLGDSFLKHAITTYLFCYTPDAHE
 GRLSYMRSKKSVCNLYRLGKKKGLPSRMVVSIFDPPVNWLPVGYVNVQDKSNSEKWEKDEMTKDCLLAN
 GKLGACEEEEEDLTWRAPKEEAEDDFLEVDQEHIQFIDSMLMGSGAFVRKISLSPFSASDSAYEWKMP
 KKASLGSMPFASGLEDYSSWDAMCYLDPSKAVEEDDFVGFVWNPSEENCGVDTGKQSI SYDLHTEQCI
 ADKSIADCVEALLGCYL TSCGERAAQLFLCSLGLKVLPIKRTSREKALDPAQENGSSQQKSLSGSCASP
 VGRPSSAGKDLEYGCLKIPPRCMFDHPDAEKTNLHLISGFETFEKKINRYRFKNKAYLLQAFTHASYHNT
 ITDCYQRLEFLGDAILDYLITKHLIYEDPRQHSPGVLTDLRSALVNNTIFASLAVKYDYHKYFKAVSPELF
 HYIDDFVKFQLEKNEMQGMSELRRSEDEEKEEDIEVPKAMGDI FESLAGAIYMDSGMSLEVVWQVYYP
 MMQPLIEKFSANVPRSPVRELLEMPEAKFSPAERTYDGKVRVTVEVVGKGFKFGVGRSRYIAKSAAR
 RALRSLKANQPQVPNS

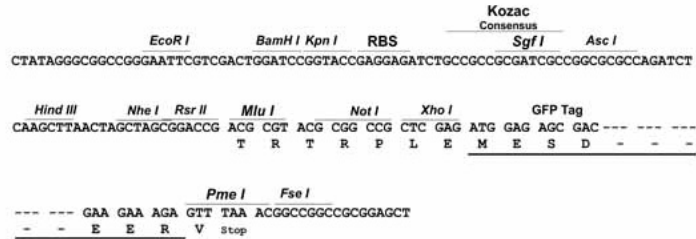
TRTRPLE – GFP Tag – V

Restriction Sites:

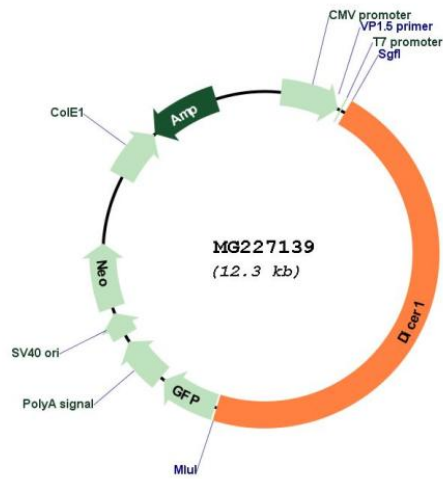
Sgfl-MluI

Cloning Scheme:

Cloning sites used for ORF Shutting:



Plasmid Map:



ACCN: NM_148948
 ORF Size: 5718 bp

OTI Disclaimer: Due to the inherent nature of this plasmid, standard methods to replicate additional amounts of DNA in E. coli are highly likely to result in mutations and/or rearrangements. Therefore, OriGene does not guarantee the capability to replicate this plasmid DNA. Additional amounts of DNA can be purchased from OriGene with batch-specific, full-sequence verification at a reduced cost. Please contact our customer care team at custsupport@origene.com or by calling 301.340.3188 option 3 for pricing and delivery.

The molecular sequence of this clone aligns with the gene accession number as a point of reference only. However, individual transcript sequences of the same gene can differ through naturally occurring variations (e.g. polymorphisms), each with its own valid existence. This clone is substantially in agreement with the reference, but a complete review of all prevailing variants is recommended prior to use. [More info](#)

OTI Annotation: This clone was engineered to express the complete ORF with an expression tag. Expression varies depending on the nature of the gene.

Components: The ORF clone is ion-exchange column purified and shipped in a 2D barcoded Matrix tube containing 10ug of transfection-ready, dried plasmid DNA (reconstitute with 100 ul of water).

Reconstitution Method:

1. Centrifuge at 5,000xg for 5min.
2. Carefully open the tube and add 100ul of sterile water to dissolve the DNA.
3. Close the tube and incubate for 10 minutes at room temperature.
4. Briefly vortex the tube and then do a quick spin (less than 5000xg) to concentrate the liquid at the bottom.
5. Store the suspended plasmid at -20°C. The DNA is stable for at least one year from date of shipping when stored at -20°C.

RefSeq: [NM_148948.2](#), [NP_683750.2](#)

RefSeq Size: 9851 bp

RefSeq ORF: 5721 bp

Locus ID: 192119

Cytogenetics: 12 54.83 cM