

Product datasheet for **MG227106**

Alox5 (NM_009662) Mouse Tagged ORF Clone

Product data:

Product Type:	Expression Plasmids
Product Name:	Alox5 (NM_009662) Mouse Tagged ORF Clone
Tag:	TurboGFP
Symbol:	Alox5
Synonyms:	5-LO; 5-LOX; 5LO; 5LX; AI850497; F730011J02
Mammalian Cell Selection:	Neomycin
Vector:	pCMV6-AC-GFP (PS100010)
E. coli Selection:	Ampicillin (100 ug/mL)



[View online »](#)

ORF Nucleotide
Sequence:

>MG227106 representing NM_009662
Red=Cloning site Blue=ORF Green=Tags(s)

TTTTGTAATACGACTCACTATAGGGCGGCCGGAATTCGTCGACTGGATCCGGTACCGAGGAGATCTGCC
GCCGCGATCGCC

ATGCCCTCTACACGGTACCGTGGCCACCGGCAGCCAGTGGTTCGCGGGCACCGACGACTACATCTACC
TCAGCCTCATTGGCTCTGCGGGCTGTAGCGAGAAGCATCTGCTGGACAAGGCATTCTACAATGACTTCGA
ACGGGGCGCGGTGGACTCCTACGATGTACCGTGGATGAGGAGCTGGCGGAGATCTACCTAGTCAAAT
GAGAAGCGCAAATACTGGCTCCATGATGACTGGTACCTGAAGTACATCACACTGAAGACACCCACGGGG
ACTACATCGAGTTCCTATGTTACCGCTGGATCACAGGCGAGGGCGAGATTGCTCTGAGGGATGGACGTGC
AAAATTGGCCGAGATGACCAAATTCACATCCTCAAGCAGCACAGACGTAAGAAGTGGAGGCACGGCAA
AAACAGTATCGATGGATGGAGTGAACCCCGCTTCCCTTTGAGTATTGATGCCAAATGCCACAAGGATC
TGCCCGAGATATCCAGTTTGTAGTAAAAAGGAGTGGACTTTGTTCTGAACTACTCAAAGCGATGGA
GAACCTGTTTCATCAACCGCTTCATGCACATGTTCCAGTCTTCTGGCAGACTTTGCTGACTTTGAGAAA
ATCTTCGTCAAAATCAGCAACACTATATCTGAGCGAGTCAAGAACCCTGGCAGGAAGACCTCATGTTTG
GCTACCAGTTCCTGAATGGCTGCAACCCAGTACTCATCAAGCGCTGCACAGCGTTGCCCCGAAGCTCCC
AGTGACCACAGAGATGGTGGAGTGCAGCCTAGAGCGGCAGCTCAGTTTAGAACAGGAAGTACAGGAAGGG
AACATTTTCATCGTTGATTACGAGCTACTGGATGGCATCGATGCTAACAAAAGTACCCCTGTACACACC
AGTTCCTGGCTGCCCCATCTGCCTGCTATAAAGAACCTAGCCAACAAGATTGTTCCATTGCCATCCA
GCTCAACCAACCCCTGGAGAGAGTAACCAATCTTCCCTACGGATTCAAAGTACGACTGGCTTTTG
GCCAAAATCTGGGTGCGTTCAGTGACTCCACGTCCATCAAACGATCACCCACCTTCTGCGCACGCATC
TGGTGTCTGAGGTGTTTGGTATCGCCATGTACCGCCAGCTGCCTGTGTGCATCCCTTTTCAAGCTGCT
GGTAGCCCATGTGAGGTTACCATTGCTATCAACACTAAGGCCCGGGAACAGCTTATCTGCGAGTATGGC
CTTTTTGACAAGGCAATGCCACCGGGGTGGAGGGCACGTGCAGATGGTGCAGAGGGCTGTCCAGGATC
TGACCTATTCTCCCTGTGTTTCCCGGAGGCCATCAAGGCCCGGGCATGGACAGCACGGAAGACATCCC
CTTCTACTTCTATCGTGATGATGGACTGCTCGTGTGGGAGGCTATCCAGTCGTTCAATGGAGGTGGTG
AGCATCTACTATGAGAACGACCAGGTGGTGGAGGAGGACCAGGAAGTGCAGGACTTCGTGAAGGATGTTT
ACGTGTACGGCATGCGGGGCAAAAAGGCCTCAGGTTTCCCAAGTCCATCAAGAGCAGGGAGAAGCTGTC
CGAGTACCTGACGGTGGTATCTTACGGCCTCTGCCAGCATGCAGCTGTAACCTCGGCCAGTATGAC
TGGTGCTCCTGGATCCCAACGCTCCTCAACTATGCGGGCCCCACCACCACGGCAAGGGTGTGGTCA
CCATCGAGCAGATCGTGGATACTCTACCAGACCGTGGCCGATCATGTTGGCATCTAGGTGCAGTGTGGGC
CTTGAGCCAGTTTCAAGAAAATGAGCTGTTTCTAGGCATGTACCCAGAGGAGCATTTCATTGAGAAGCCA
GTGAAGGAAGCCATGATCCGATTCGCAAGAACCTGGAGGCCATCGTCAGCGTGATCGCCGAGCGCAATA
AGAACAAAAGCTCCCCTACTACTACCTGTCACCAGACAGGATCCCAACAGCGTAGCCATC

ACGCGTACGCGGCCGCTCGAG - GFP Tag - GTTTAA

Protein Sequence: >MG227106 representing NM_009662
 Red=Cloning site Green=Tags(s)

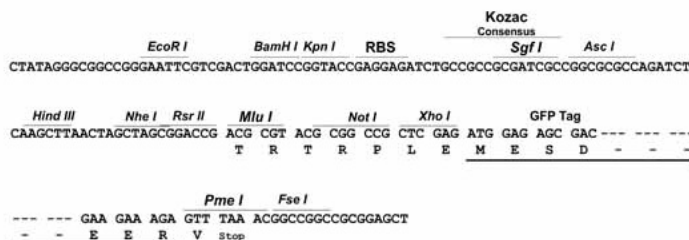
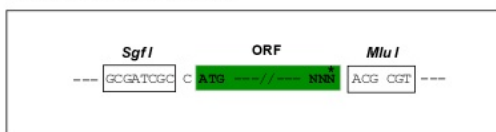
```
MPSYTVTATGSQWVAGTDDYIYLSLIGSAGCSEKHLDDKAFYNDFERGAVDSYDVTVDEELGEIYLVKI
EKRRKYWLHDDWYLKYITLKTPHGDYIEFPCYRWITGEGEIVLRDGRAKLARDDQIHILKQHRKELEARQ
KQYRWMEWNPGFPLSIDAKCHKDLPRDIQFDSEKGVDFVLNYSKAMENLFINRFMHMFQSSWHDFADF EK
IFVKISNTISERVKNHWQEDLMFGYQFLNGCNPVLIKRCTALPPKLPVTTEMVECSLERQLSLEQEVQEG
NIFIVDYELLDGIDANKTDPCTHQFLAAPICLLYKNLANKIVPIAIQLNQTPGESNPIFLPTDSKYDWLL
AKIWRSSDFHVHQITITHLLRTHLVSEVFGIAMYRQLPAVHPLFKLLVAHVRFRTIAINTKAREQLICEYG
LFDKANATGGGGHVQMVQRAVQDLTYSSLCFPEAIKARGMDSTEDIPFYFYRDDGLLVWEAIQSFTMEVV
SIYYENDQVVEEDQELQDFVKDYVYVYGMGRKASGFPKSIKSREKLSEYLTVVIFATAQAHAANVFGQYD
WCSWIPNAPPTMRAPPPTAKGVVITIEQIVDTLPDRGRSCWHLGAVWALSQFQENELFLGMYPEEHFIEKP
VKEAMIRFRKNLEAIVSVIAERNKNKKLPYYYYSPDRIPNSVAI
```

TRTRPLE - GFP Tag - V

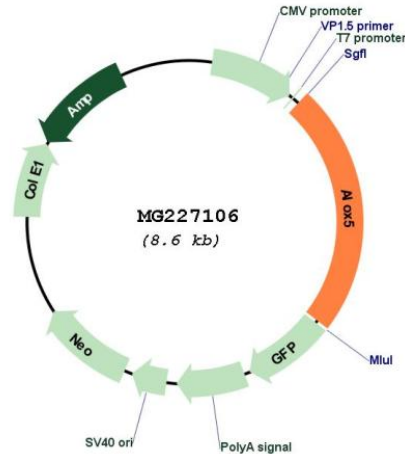
Restriction Sites: SgfI-MluI

Cloning Scheme:

Cloning sites used for ORF Shuttling:



Plasmid Map:



ACCN: NM_009662

ORF Size: 2022 bp

OTI Disclaimer: The molecular sequence of this clone aligns with the gene accession number as a point of reference only. However, individual transcript sequences of the same gene can differ through naturally occurring variations (e.g. polymorphisms), each with its own valid existence. This clone is substantially in agreement with the reference, but a complete review of all prevailing variants is recommended prior to use. [More info](#)

OTI Annotation: This clone was engineered to express the complete ORF with an expression tag. Expression varies depending on the nature of the gene.

Components: The ORF clone is ion-exchange column purified and shipped in a 2D barcoded Matrix tube containing 10ug of transfection-ready, dried plasmid DNA (reconstitute with 100 ul of water).

Reconstitution Method:

1. Centrifuge at 5,000xg for 5min.
2. Carefully open the tube and add 100ul of sterile water to dissolve the DNA.
3. Close the tube and incubate for 10 minutes at room temperature.
4. Briefly vortex the tube and then do a quick spin (less than 5000xg) to concentrate the liquid at the bottom.
5. Store the suspended plasmid at -20°C. The DNA is stable for at least one year from date of shipping when stored at -20°C.

RefSeq: [NM_009662.2](#), [NP_033792.1](#)

RefSeq Size:	2827 bp
RefSeq ORF:	2025 bp
Locus ID:	11689
UniProt ID:	P48999
Cytogenetics:	6 53.79 cM
Gene Summary:	Catalyzes the first step in leukotriene biosynthesis, and thereby plays a role in inflammatory processes.[UniProtKB/Swiss-Prot Function]