

Product datasheet for **MG227101**

KI (NM_013823) Mouse Tagged ORF Clone

Product data:

Product Type:	Expression Plasmids
Product Name:	KI (NM_013823) Mouse Tagged ORF Clone
Tag:	TurboGFP
Symbol:	KI
Synonyms:	alpha-kl
Mammalian Cell Selection:	Neomycin
Vector:	pCMV6-AC-GFP (PS100010)
E. coli Selection:	Ampicillin (100 ug/mL)
ORF Nucleotide Sequence:	>MG227101 representing NM_013823 Red=Cloning site Blue=ORF Green=Tags(s)

TTTTGTAATACGACTCACTATAGGGCGGCCGGAATTCGTCGACTGGATCCGGTACCGAGGAGATCTGCC
GCC**CGATCGCC**

ATGCTAGCCCGCGCCCTCCTCGCCGCCCGCGGGCTGGTGCTGCTCCGTTTGCTGTTGCTGCATCTGC
TGCTGCTCGCCCTGCGCGCCCGCTGCCTGAGCGCTGAGCCGGGTGAGGCGCGCAGACCTGGGCTCGCTT
CGCGCGCGCTCCTGCCCCAGAGGCGCTGGCTCCTCCACGACACCTTCCCCGACGGTTTCTCTGGGCG
GTAGGCAGCGCCCTATCAGACCGAGGGCGGTGGCGACAGCACGGCAAAGGCGCGTCCATCTGGGACA
CTTTCACCCATCACTCTGGGGCGCCCCGTCCGACTCCCCGATCGTCGTGGCGCCGTGGGTGCCCGTC
GCCTCCCCGTGCTCCACTGGAGATGTGGCCAGCGATAGTTACAACAACGTCTACCGCGACACAGAGGGG
CTGCGCGAACTGGGGGTACCCACTACCGCTTCTCCATATCGTGGGCGCGGGTGCTCCCCAATGGCACCG
CGGGCACTCCCAACCGCGAGGGGCTGCGCTACTACCGCGGGTGTGGAGCGGCTGCGGGAGCTGGGCGT
GCAGCCGGTGGTTACCCTGTACCATTGGGACCTGCCACAGCGCCTGCAGGACACCTATGGCGGATGGGCC
AATCGCGCCCTGGCCGACCATTTCAGGGATTATGCCGAGCTCTGCTTCCGCCACTTCGGTGGTCAGGTCA
AGTACTGGATCACCATTGACAACCCCTACGTGGTGGCCTGGCACGGGTATGCCACCGGGCGCCTGGCCCC
GGGCGTGAGGGGAGCTCCAGGCTCGGTACCTGGTGGCCACAACCTACTTTTGGCTCATGCCAAAGTC
TGGCATCTCTACAACACCTCTTTCGCCCCACACAGGGAGGCGGGGTGTCTATCGCCTTAAGCTCCCAT
GGATCAATCCTCGAAGAATGACTGACTATAATATCAGAGAATGCCAGAAGTCTCTTGACTTTGTGCTAGG
CTGGTTTGCCAAACCATATTTATTGATGGCGACTACCCAGAGAGTATGAAGAACAACCTCTCGTCTCTT
CTGCCTGATTTTACTGAATCTGAGAAGAGGCTCATCAGAGGAAGTCTGACTTTTTTGTCTCTCTCTTCG
GACCAACCTTGAGCTTTTCACTATTGGACCCTAACATGAAGTTCCGCCAATTGGAGTCTCCCAACCTGAG
GCAGCTTCTGTCTGGATAGATCTGGAATATAACCACCCTCCAATATTTATTGTGAAAAATGGCTGGTTT
GTCTCGGGAACCAAAAAGGGATGATGCCAAATATATGTATTATCTCAAGAAGTTCATAATGAAACCT
TAAAGCAATCAGACTGGATGGGTGACGTCATTGGGTACACCGCGTGGTGCCTCATGGACGGTTTCGA
GTGGCATAGGGGCTACAGCATCCGGCGAGGACTCTTCTACGTTGACTTTCTGAGTCAGGACAAGGAGCTG



[View online »](#)

TTGCCAAAGTCTTCGGCCTTGTTCTACCAAAAGCTGATAGAGGACAATGGCTTTCCTCCTTTACCTGAAA
 ACCAGCCCCTTGAAGGGACATTTCCCTGTGACTTTGCTTGGGGAGTTGTTGACAACTACGTTCAAGTGGA
 CACTACTCTCTCTCAGTTTACTGACCCGAATGTCTATCTGTGGGATGTGCATCACAGTAAGAGGCTTATT
 AAAGTAGACGGGTTGTAGCCAAGAAGAGAAAACCTTACTGTGTTGATTTCTCTGCCATCCGGCCTCAGA
 TAACCTTACTTCGAGAAATGCGGGTCACCCACTTTCGCTTCTCCCTGGACTGGGCCCTGATCTTGCCCTCT
 GGGTAACCAGACCCAAGTGAACCACACGGTTCGCACTTCTACCGCTGCATGATCAGCGAGCTGGTGCAC
 GCCAACATCACTCCAGTGGTGGCCCTGTGGCAGCCAGCCCCGCCAAGGCCTGCCACATGCCCTTG
 CAAAACATGGGGCTGGGAGAACC CGCACTGCTCTGGCGTTTGCAGACTACGCAAAACCTGTGTTTTAA
 AGAGTTGGGTCACTGGGTCAATCTCTGGATCACCATGAACGAGCCAAACACAGGAACATGACCTATCGT
 GCCGGGACACCTCCTGAGAGCCCATGCCTTGGCTTGGCATCTGTACGATGACAAGTTTAGGGCGGCTC
 AGAAAGGCAAAATATCCATCGCCTTGCAGGCTGACTGGATAGAACC GGCCCTGCCCTTTCTCTCAAAATGA
 CAAAGAAGTGGCCGAGAGAGTTTTGGAATTTGATATAGGCTGGCTGGCAGAGCCTATTTTGGTTCCGGA
 GATTATCCACGTGTGATGAGGGACTGGCTGAACCAAAAAACAATTTCTTTGCCCTATTTACCGAAG
 ATGAAAAAAGCTAGTCCGGGTTCTTTGACTTCTGGCGGTGAGTCATTACACCACCATCTGGTAGA
 CTGGGAAAAGGAGATCCGATGAAATACAACGATTACTTGGAGGTACAGGAGATGACTGACATCACATGG
 CTCAACTCTCCAGTCAGGTGGCAGTGGTGCCTTGGGGGCTGCGCAAAGTGCTCAACTGGCTAAGGTTCA
 AGTACGGAGACCTCCCGATGTATGTGACAGCCAATGGAATCGATGATGACCCCCACGCCGAGCAAGACTC
 ACTGAGGATCTATTATATTAAGAATTATGTGAATGAGGCTCTGAAAGCCTACGTGTTGGACGACATCAAC
 CTTTGTGGCTACTTTGCGTATTCACCTTAGTGATCGCTCAGCTCCCAAGTCTGGCTTTTATCGATATGCTG
 CGAATCAGTTTGAGCCCAAACCTCTATGAAACATTACAGGAAAATTATTGACAGCAATGGCTTCTGGG
 TTCTGGAACACTGGGAAGGTTTTGTCCAGAAGAATACTGTGTGCACCGAATGTGGATTTTTCAAACC
 CGGAAGTCTTTGCTGGTCTTCATCTCGTTTCTGTTTTACTTTTATTATTCTCTTGTCTCATTTTTTC
 ACTACTCCAAGAAAGGCCAGAGAAGTTATAAG

ACGCGTACGCGGCCGCTCGAG - GFP Tag - GTTTAA

Protein Sequence:

>MG227101 representing NM_013823

Red=Cloning site Green=Tags(s)

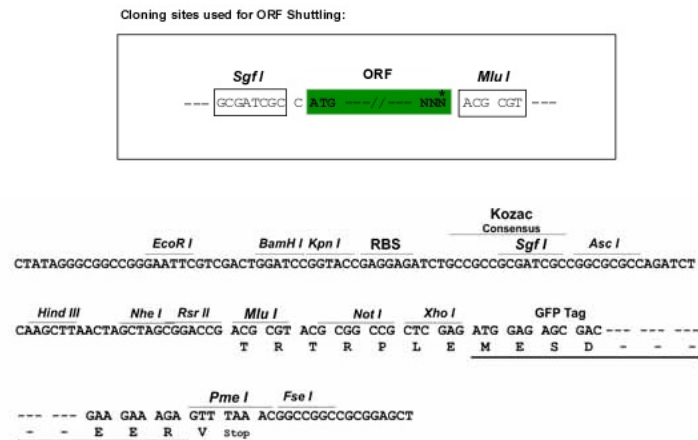
MLARAPRRPPRLVLLRLLLLHLLLLLALRARCLSAEPGQGAQTWARFARAPAPEAAGLLHDTFPDGLWA
 VGSAAYQTEGGWRQHGKASIWDTFTHHSGAAPSDSPIVVAPSGAPSPPLSSTGDVASDSYNNVYRDTEG
 LRELGVTHYRFSISWARVLPNGTAGTPNREGLRYRLLERLRELGVQPVVTLYHWDLPQRLQD TYGGWA
 NRALADHFRDYAELCFRHFQGQVKYWITIDNPYVVAWHGYATGRLAPGVRGSSRLGYLVAHNLLLAHAKV
 WHLYNTSFRPTQGGRVSIASSHWINPRRMTDYNIRECQKSLDFVLGWFAPKPIFIDGYPESMKNNLSSL
 LPDFTESEKRLIRGTADFFALSFGPTLSFQLDPNMKFRQLESPNLRQLLSWIDLEYNHPPIFIVENGWF
 VSGTTKRDDAKYMYLKKFIMETLKAIRLDGVDVIGYTAWSLMDGFEWHRGYSIRRGLFYVDFLSQDKEL
 LPKSSALFYQKLIEDNGFPPLPENQPLEGTFPCDFAWGVVDNYVQVDTTLSQFTDPNVYLWDVHHSKRLI
 KVDGVVAKKRKPYCVDFSAIRPQITLLREMRVTHFRFLDWALILPLGNQTQVNHTVLHFYRCMISELVH
 ANITPVVALWQPAAPHQGLPHALAKHGAWENPHTALAFADYANLCKELGHVNLWITMNEPNTRNMTYR
 AGHLLRAHALAWHL YDDKFRAAQKGKISIALQADWIEPACPF SQNDKEVAERVLFEFDIGWLAEPFSGS
 DYPRVMRDWLNQNNFLLPYFTEDEKKLVGRSFDLAVSHYTTILVDWEKEDPMKYNDYLEVQEMTDITW
 LNSPSQVAVVPWGLRKVLNWLRFKYGDLPMYVTANGIDDDPHAEQDSLRIYYIKNYVNEALKAYVLDDIN
 LCGYFAYSLSDRSAPKSGFYRYAANQFEPKPSMKHYRKIIDSNGFLGSGTLGRFCPEEYTVCTECGFFQT
 RKSLLVFISFLVFTFIISLALIFHYSKKGQRSYK

TRTRPLE - GFP Tag - V

Restriction Sites:

SgfI-MluI

Cloning Scheme:



ACCN: NM_013823

ORF Size: 3042 bp

OTI Disclaimer: Due to the inherent nature of this plasmid, standard methods to replicate additional amounts of DNA in E. coli are highly likely to result in mutations and/or rearrangements. Therefore, OriGene does not guarantee the capability to replicate this plasmid DNA. Additional amounts of DNA can be purchased from OriGene with batch-specific, full-sequence verification at a reduced cost. Please contact our customer care team at custsupport@origene.com or by calling 301.340.3188 option 3 for pricing and delivery.

The molecular sequence of this clone aligns with the gene accession number as a point of reference only. However, individual transcript sequences of the same gene can differ through naturally occurring variations (e.g. polymorphisms), each with its own valid existence. This clone is substantially in agreement with the reference, but a complete review of all prevailing variants is recommended prior to use. [More info](#)

OTI Annotation: This clone was engineered to express the complete ORF with an expression tag. Expression varies depending on the nature of the gene.

Components: The ORF clone is ion-exchange column purified and shipped in a 2D barcoded Matrix tube containing 10ug of transfection-ready, dried plasmid DNA (reconstitute with 100 ul of water).

Reconstitution Method:

1. Centrifuge at 5,000xg for 5min.
2. Carefully open the tube and add 100ul of sterile water to dissolve the DNA.
3. Close the tube and incubate for 10 minutes at room temperature.
4. Briefly vortex the tube and then do a quick spin (less than 5000xg) to concentrate the liquid at the bottom.
5. Store the suspended plasmid at -20°C. The DNA is stable for at least one year from date of shipping when stored at -20°C.

RefSeq: [NM_013823.2](#), [NP_038851.2](#)

RefSeq Size: 5124 bp

RefSeq ORF: 3045 bp

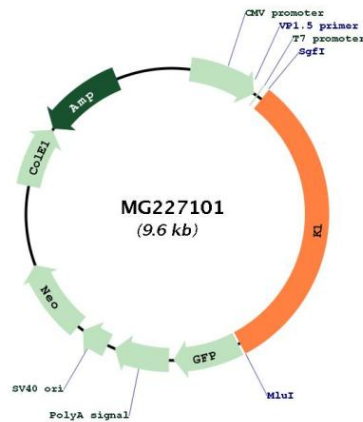
Locus ID: 16591

UniProt ID: [O35082](#)

Cytogenetics: 5 G3

Gene Summary: May have weak glycosidase activity towards glucuronylated steroids. However, it lacks essential active site Glu residues at positions 241 and 874, suggesting it may be inactive as a glycosidase in vivo. May be involved in the regulation of calcium and phosphorus homeostasis by inhibiting the synthesis of active vitamin D. Essential factor for the specific interaction between FGF23 and FGFR1.[UniProtKB/Swiss-Prot Function]

Product images:



Circular map for MG227101