

## Product datasheet for **MG227067**

### Insr (NM\_010568) Mouse Tagged ORF Clone

#### Product data:

Product Type:	Expression Plasmids
Product Name:	Insr (NM_010568) Mouse Tagged ORF Clone
Tag:	TurboGFP
Symbol:	Insr
Synonyms:	4932439J01Rik; CD220; D630014A15Rik; I; IR; IR-A; IR-B
Mammalian Cell Selection:	Neomycin
Vector:	pCMV6-AC-GFP (PS100010)
E. coli Selection:	Ampicillin (100 ug/mL)
ORF Nucleotide Sequence:	>MG227067 representing NM_010568 Red=Cloning site Blue=ORF Green=Tags(s)

TTTTGTAATACGACTCACTATAGGGCGGCCGGAATTCGTCGACTGGATCCGGTACCGAGGAGATCTGCC  
GCC**CGATCGCC**

ATGGGCTTCGGGAGAGGATGTGAGACGACGGCTGTGCCATTGCTGGTGGCCGTGGCCGCTTGTGGTGG  
GCACAGCCGGCCACCTGTACCCTGGAGAGGTGTGCCCTGGTATGGACATCCGGAACAACCTGACCAGGCT  
ACATGAGCTGGAGAACTGCTCAGTCATTGAGGGCCATCTGCAGATCCTCCTGATGTTCAAGACCAGACCC  
GAAGATTTCCGAGACCTCAGTTTCCCAAACCTCATCATGATCACAGATTACCTGCTTCTCTTCCGTGTCT  
ATGGTCTGGAAAGTCTGAAAGACCTCTTCCAAATCTCACAGTCATCCGAGGCTCCCGTCTCTTCTTCAA  
CTATGCCCTGGTTATCTTCGAGATGGTCCACCTGAAGGAGCTGGGGCTTTATAACCTCATGAACATCACC  
CGGGGCTCTGTCCGCATCGAAGAATAATGAGCTCTGCTACCTGGCCACTATCGACTGGTCCCCTATCC  
TGGATTCTGTGGAGGACAACCTACATTGTAAGTGAACAAAGATGACAACGAGGAATGTGGGGATGTCTGTCC  
AGGCACCGCCAAGGGCAAGACCAACTGTCTGCCACTGTCAATGGGCAGTTTGTGGAACGGTGTCTGG  
ACACACAGTCATTGTGAGAAAGTTTGCCAACCCTGTGTAAGTCACATGGCTGCACAGCTGAAGGCCCTGT  
GCTGCCACAAAGAGTGCCTGGGCAACTGTTCCGAACTGATGACCCACCAAGTGTGTGGCTGTGCGAA  
CTTCTATCTGGATGGTCAGTGTGTGGAGACCTGCCCGCCACCCTACTATCACTCCAGGACTGGCGCTGT  
GTGAATTCAGCTTCTGCCAAGACCTTCACTTCAAATGCAGAACTCTCGGAAGCCTGGTCCCAACT  
ACGTCATTCACAACAATAAGTGCACTCCCGAGTGCCCGTCTGGCTATACCATGAATTCCAGCAACTTGAT  
GTGCACCCATGTCTGGGACCCTGCCCTAAGGTCTGCCAATCCTCGAAGGTGAGAAGACCATTGATTCT  
GTGACATCTGCCAGGAGCTCCGAGGCTGCACTGTGATCAACGGTAGCCTGATCATCAACATCCGAGGGG  
GCAACAACCTGGCAGCTGAGCTGGAGGCTAACCTTGGCCTCATTGAAGAAATTTCCGGATTTCTAAAGAT  
CCGCCGCTCCTATGCTCTGGTATCACTTTCTTTCTTCCAGGAAGCTACATCTGATTCGAGGAGAGACCTTG  
GAAATTTGGAACTATTCTTTTTATGCCTTGGACAACCAGAACCTGAGGCAACTCTGGGACTGGAGCAAC  
ACAACCTCACCATCACTCAGGGCAAGCTCTTCTCCATTACAACCCGAAACTCTGCTTGTCTGAAATTCA  
CAAGATGGAAGAAGTCTCCGGAATAAGGGCCGTGAGGAGGAAACGACATTGCCCTGAAGACCAATGGG



[View online »](#)

GACCAGGCATCGTGTGAAAATGAATTGCTTAAATTTCTTTCATTCCGGACATCTTTTGACAAGATCCTGT  
TGAGGTGGGAACCTACTGGCCCCGACTTCCGAGATCTCCTGGGATTCATGTTGTTCTACAAAGAGGC  
CCCTTATCAGAATGTGACAGAGTTTGTGGGCAGGATGCTTGTGGCTCCAACAGCTGGACTGTGGTGGAT  
ATTGACCCGCCCCAGAGGTCCAACGACCCCAAGTCTCAGACCCCAAGCCACCCTGGGTGGCTGATGCGGG  
GCCTCAAACCTGGACCAATACGCCATCTTTGTGAAGACCTGGTTACCTTCTCTGATGAACGGCGGAC  
CTATGGAGCCAAAAGTGATATCATCTATGTGCAAACAGATGCCACTAATCCTTCTGTCCCCTGGATCCC  
ATATCAGTTTCTAATTCCTCATCTCAGATTATCTTAAAGTGGAAGCCCCCTCTGACCCCAATGGCAACA  
TCACACACTACCTGGTGTACTGGGAGAGGCAAGCAGAGGACAGCGAGCTGTTTGAGCTGGATTATTGTCT  
CAAAGGGCTGAAGCTCCCTTACGGACCTGGTCCCCACCCTTTGAGTCTGATGATTCTCAGAAGCACAAT  
CAGAGTGAGTATGACGACTCGGCCAGTGAGTGCTGCTCATGCCCTAAGACTGACTCTCAGATCCTGAAGG  
AGCTGGAGGAGTCTTCATTCAGGAAGACCTTCGAGGATTACCTGCACAACGTGGTTTTTGTCCCCAGGCC  
ATCCCGAAAGCGAAGATCCCTTGAAGAGGTGGGAATGTGACAGCCACCACACTCACACTCCAGATTTT  
CCCAACGTCTCCTCTACCATTGTGCCACAAGTCAGGAGGAGCACAGGCCATTTGAGAAAGTGGTGAACA  
AGGAGTCACTTGTCTCTGGCCTGAGACACTCACTGGGTACCGCATTGAGCTGCAGGCATGCAATCA  
AGATCCCGAGATGAGAGGTGCAGTGTGGCTGCCTACGTCAGTGCCTGGACCATGCCTGAAGCTAAGGCA  
GATGACATCGTTGGCCCTGTGACTCATGAAATCTTTGAGAACAATGTTGTACACTAATGTGGCAAGAGC  
CAAAGGAACCTAATGGTCTGATTGTGCTATATGAAGTGAGCTATCGCCGATATGGTGATGAGGAGCTGCA  
CCTCTGTGCTCCCGAAGCATTGTCCTGGAGCGGGCTGCAGGCTGCGAGGGCTCTCCCCAGGAAAC  
TACAGTGTTCGAGTCCGGCTACCTCTCTGGCAGGAAATGGTCTCTGGACAGAACCCACCTATTTTTATG  
TGACTGATTATTTAGATGTCCCATAAATATGCCAAAATATCATTGGACCCCTCATCTTTGTCTTCTCT  
CTTCAGTGTGTGATTGGAAGTATTTATCTATTTCTGAGAAAGAGGCAGCCGGATGGGCCAATGGGACCA  
CTGTATGCATCTTCAAACCTGAGTACCTCAGTGCCAGTGATGTGTTCCATCTTCTGTACGTGCCGG  
ACGAGTGGGAGGTGCCTCGAGAGAAGATCACCTTCTTTCGAGAGCTGGGGCAGGGATCCTTGGTATGGT  
GTATGAAGGCAATGCCAAGGATATCATCAAGGGTGAGGCAGAGACCCGTGTTGCGGTTAAGACTGTCAAT  
GAGTCAGCCAGTCTTCGAGAACGGATCGAGTTCCTCAATGAGGCATCAGTCATGAAGGGATTACCTGCC  
ATCATGTGGTCCGCCTTCTTGGGGTGGTATCCAAAGGACAGCCAACGCTGGTAGTGATGGAATTGATGGC  
TCATGGAGACCTGAAAAGTCACTCCGTTCTCTGAGGCCAGATGCTGAGAATAACCCAGGCCGCCCTCCC  
CCTACCTTGCAAGAAATGATTGAGATGACAGCAGAAATGCTGATGGCATGGCATACTTGAACGCCAAGA  
AGTTTGTGACCCGGACCTGGCAGCTCGAAACTGCATGGTTGCCCATGATTTTACTGTCAAATTTGAGAGA  
CTTTGGAATGACAAGGGACATCTACGAGACAGATTACTATCGAAAGGGGCAAGGGACTGCTTCTCTGTG  
AGGTGGATGTACCTGAGTCCCTGAAGGATGGAGTCTTTACTGCTTCTTCTGATATGTGGTCTTTGGGG  
TGGTCTTTGGGAAATCACTAGCCTGGCTGAGCAACCTTATCAAGGCCTGTCTAATGAACAGGTGTTGAA  
GTTTGTATGGATGGAGGCTATCTGGATCCCCCTGATAACTGTCCAGAGAGACTCACTGACCTGATGCGC  
ATGTGCTGGCAGTTCAACCCCAAGATGAGGCCAACCTTCTGAAATCGTCAACCTGCTCAAGGATGACC  
TCCACCCAGCTTTCCAGAAGTTTCTTCTTCTACAGCGAGGAGAACAAGGCTCCTGAGAGTGAGGAGCT  
GGAGATGGAGTTTGAAGACATGGAGAATGTCCCGTTGGATCGTTCCTCTCACTGTGAGAGAGAAGAGGCT  
GGGGCCGGGAGGGAGGGTCTCACTGAGCATCAAACGGACCTATGATGAACACATCCCCATACCCACA  
TGAATGGGGCAAGAAGAACGGACGTGTCTTACCCTGCCAAGGTCAAACCTTCC

ACGCGTACGCGGCCGCTCGAG – GFP Tag – GTTTAA

Protein Sequence: >MG227067 representing NM\_010568  
 Red=Cloning site Green=Tags(s)

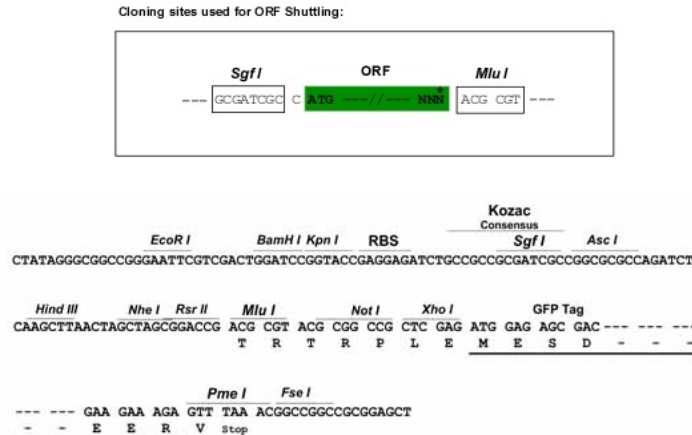
MGFGRGCETTAVPLLVAVAALLVGTAGHLYPGEVCPGMDIRNRLTRHELENCVIEGHLQILLMFKTRP  
 EDFRDL SFPKLIMITDYLLLFRVYGLESKDLFPNLTVIRGSRLLFFNYALVIFEMVHLKELGLYNLMNIT  
 RGSVRIEKNELCYLATIDWSRILDSVEDNYIVLNKDDNEECGDVCPGTAKGKTNCPATVINGQFVERCW  
 THSHCQKVCPTICKSHGCTAEGLCCHKECLGNCSEPPDPTKCVACRNFYLDGQCVCETPPPPYHFQDWRC  
 VNF SFCQDLHFKCRNSRKP GCHQYVIHNNKCIPECPSGYTMNSSNLMCTPCLGPCPKVCQILEGEKTIDS  
 V TSAQELRGCTVINGSLIINIRGGNNLAAELEANLGLIEEISGFLKIRRSYALVLSFFRKLHLIRGETL  
 EIGNYSFYALDNQNLRLQWDWSKHNLITIQGKLFHYNPKLCLSEIHKMEEVSGTKGRQERNDIALKTNG  
 DQASCENELLKFSFIRTSFDKILLRWEPYWPDPFRDLLGFMLFYKEAPYQNVTEFDGQDACGSNSWTVVD  
 IDPPQRSNDPKSQTPSHPGWLMRGLKPWTQYAFVKTLVTFSDERRTYGAKSDIIVVQTDATNPSVPLDP  
 ISVSNSSSQIILKWKPPSDPNGNITHYL VYWERQAEDSELFELDYCLKGLKLP SRTWSPPFESDDSQKHN  
 QSEYDDSA SECCSPKTD SQILKELEESSFRKTFEDYLHN VVFP RPSRKRSL EEVGNVTATTL TLPDF  
 PNV SSTIVPTSQEEHRPF EKVVNKE SLVISGLRHFTGYRIELQACNQDSPDERCSVAAYVSARTMPEAKA  
 DDIVGPVTHEIFENNVVHLMWQEPKEPNGLIVLYEVS YRRYGDEELHLCVSRKHFALERGRLRGLSPGN  
 YSVRVRATSLAGNGSWTEPTYFYVTDYLDVPSNIAKIIIGPLIFVFLFSV VIGSIYLF LRKRQPDGPMGP  
 LYASSNPEYLSASDVFPSSVYVPDEWEVPREKITLLRELQGSFGMVYEGNAKDI IKGAE TRVAVKTVN  
 ESASLRERIEFLNEASVMKGFTCHHVVRLLGVVSKGQPTLVVME LMAHGDLKSHLRSLRPDAENNPGRPP  
 PTLQEMIQMTAEIADGMAYLNAKKFVHRDLAARNCMVAHDFTVKIGDFGMTRDIYETDYRKGKGLLPV  
 RWMSPESLKDGVFTASSDMWSFGVVLWEITSLAEQPYQGLSNEQVLK FVMDGGYLDPPDNCPERL TDLMR  
 MCWQFNPKMRPTFLEIVNLLKDDLHPSFPEV SFFYSEENKAP ESELEMEFEDMENVPLDRSSHQCREEA  
 GGREGGSSL SIKRTYDEHIPYTHMNGGKKNRVLTLPRSNPS

TRTRPLE - GFP Tag - V

Chromatograms: [https://cdn.origene.com/chromatograms/ja1674\\_e09.zip](https://cdn.origene.com/chromatograms/ja1674_e09.zip)

Restriction Sites: SgfI-MluI

Cloning Scheme:

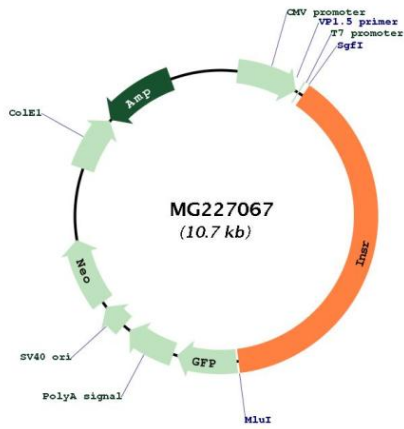


ACCN: NM\_010568

ORF Size: 4116 bp

<b>OTI Disclaimer:</b>	<p>Due to the inherent nature of this plasmid, standard methods to replicate additional amounts of DNA in E. coli are highly likely to result in mutations and/or rearrangements. Therefore, OriGene does not guarantee the capability to replicate this plasmid DNA. Additional amounts of DNA can be purchased from OriGene with batch-specific, full-sequence verification at a reduced cost. Please contact our customer care team at <a href="mailto:custsupport@origene.com">custsupport@origene.com</a> or by calling 301.340.3188 option 3 for pricing and delivery.</p> <p>The molecular sequence of this clone aligns with the gene accession number as a point of reference only. However, individual transcript sequences of the same gene can differ through naturally occurring variations (e.g. polymorphisms), each with its own valid existence. This clone is substantially in agreement with the reference, but a complete review of all prevailing variants is recommended prior to use. <a href="#">More info</a></p>
<b>OTI Annotation:</b>	<p>This clone was engineered to express the complete ORF with an expression tag. Expression varies depending on the nature of the gene.</p>
<b>Components:</b>	<p>The ORF clone is ion-exchange column purified and shipped in a 2D barcoded Matrix tube containing 10ug of transfection-ready, dried plasmid DNA (reconstitute with 100 ul of water).</p>
<b>Reconstitution Method:</b>	<ol style="list-style-type: none"> <li>1. Centrifuge at 5,000xg for 5min.</li> <li>2. Carefully open the tube and add 100ul of sterile water to dissolve the DNA.</li> <li>3. Close the tube and incubate for 10 minutes at room temperature.</li> <li>4. Briefly vortex the tube and then do a quick spin (less than 5000xg) to concentrate the liquid at the bottom.</li> <li>5. Store the suspended plasmid at -20°C. The DNA is stable for at least one year from date of shipping when stored at -20°C.</li> </ol>
<b>RefSeq:</b>	<p><a href="#">NM_010568.3</a></p>
<b>RefSeq Size:</b>	<p>9357 bp</p>
<b>RefSeq ORF:</b>	<p>4119 bp</p>
<b>Locus ID:</b>	<p>16337</p>
<b>UniProt ID:</b>	<p><a href="#">P15208</a></p>
<b>Cytogenetics:</b>	<p>8 1.82 cM</p>
<b>Gene Summary:</b>	<p>This gene encodes a member of the receptor tyrosine kinase family of transmembrane signaling proteins that play important roles in cell differentiation, growth and metabolism. The encoded preproprotein undergoes proteolytic processing to generate alpha and beta chains that form a disulfide-linked heterodimer which, in turn homodimerizes to form a mature, functional receptor. Mice lacking the encoded protein develop severe hyperglycemia and hyperketonemia, and die within a couple of days after birth as a result of diabetic ketoacidosis. [provided by RefSeq, Aug 2016]</p>

Product images:



Circular map for MG227067