

Product datasheet for **MG227065**

Gria2 (NM_013540) Mouse Tagged ORF Clone

Product data:

| | |
|---------------------------|--|
| Product Type: | Expression Plasmids |
| Product Name: | Gria2 (NM_013540) Mouse Tagged ORF Clone |
| Tag: | TurboGFP |
| Symbol: | Gria2 |
| Synonyms: | Glu; GluA2; GluR; Glur-2; GluR-B; gluR-K2; Glur2 |
| Mammalian Cell Selection: | Neomycin |
| Vector: | pCMV6-AC-GFP (PS100010) |
| E. coli Selection: | Ampicillin (100 ug/mL) |



[View online »](#)

ORF Nucleotide Sequence:

>MG227065 representing NM_013540
 Red=Cloning site Blue=ORF Green=Tags(s)

TTTTGTAATACGACTCACTATAGGGCGGCCGGAATTCGTCGACTGGATCCGGTACCGAGGAGATCTGCC
 GCC**CGCATCGCC**

ATGCAAAAGATTATGCATATTTCTGTCCTCTTTCTCCTGTTTTATGGGACTGATTTTTGGTGTCTCTT
 CTAACAGCATACAGATAGGGGGCTATTTCCAAGGGCGCTGATCAAGAATACAGTGCATTTCCGGTAGG
 GATGGTTCAGTTTTCCACTTCGGAGTTCAGACTGACACCCCATATCGACAATTTGGAGGTAGCCAACAGT
 TTCGCAGTCACCAATGCTTTCTGCTCCCAGTTTTCAAGAGGCGTCTATGCGATTTTTGGTTTTACGACA
 AGAAGTCTGTAATACCATCACATCATTCTGTGGGACTGTCATGTATCCTTCATCACACCAAGCTTCCC
 AACAGATGGCAGCATCCATTTGTCATCCAGATGCGACCTGACCTCAAAGGAGCACTCCTTAGCTTGATT
 GAGTACTACCAATGGGATAAGTTCGCATACCTCTATGACAGTACAGAGGCTTATCAACTGCAAGCTG
 TGCTGGATTCTGCTCGGAGAAGAAGTGGCAGGTGACTGCTATCAATGTGGGAACATTAACAATGACAA
 GAAAGATGAGACCTACAGATCACTTTCAAGATCTGGAGTTAAAAAAGAACGGCGTGAATCCTTGAC
 TGGCAAAGGGATAAAGTCAATGACATTGTGGACAGGTTATTACCATTTGAAAGCATGTTAAAGGGTACC
 ATTATATCATTGCAAATCTGGGATTTACTGATGGAGACCTGCTGAAAATTCAGTTTGGAGGAGCAATGT
 CTCTGGATTTAGATTGTAGACTACGACGACTCCCTGGTGTCTAAATTTATAGAAAGATGGTCAACACTC
 GAAGAGAAAGAATACCCTGGAGCACACAGCGACAATTAAGTATACTTCGGCCCTGACTTATGATGCTG
 TCCAAGTGATGACTGAAGCATTCCGCAATCTTCGGAAGCAGAGGATTGAAATCTCCAGGAGAGGAAATGC
 AGGAGATTGTTGGCCAACCCAGCTGTGCCTTGGGACAAGGCGTGGAAATAGAAAGGCCCTCAAGCAG
 GTTCAAGTTGAAGTCTCTCTGGAATATAAAATTTGACCAGAACGAAAAACGAATAAATACACAATTA
 ACATCATGGAGCTCAAAACAAATGGACCCCGAAGATTGGGTACTGGAGTGAAGTGGATAAAATGGTTGT
 CACCCTAACCGAGCTCCCCTCTGGAATGACACATCTGGGCTTGAACAAAACTGTGGTTGTCACCACA
 ATATTGGAATCTCCATATGTTATGATGAAGAAAAATCATGAAATGCTTGAAGGGAATGAGCGTTATGAGG
 GCTACTGTGTTGACTTAGCTGCAGAAATGGCAAACATTGTGGATTCAAGTACAAGCTGACTATTGTTGG
 GGATGGCAAGTATGGGGCCAGGGATGCAGACACCAAAATTTGGAATGGTATGGTTGGAGAAGTTGTATAT
 GGGAAAGCTGATATTGCCATTGCTCCATTAATCACTCTCGTGAGAGAAGAGGTGATTGACTTCTCGA
 AGCCATTCATGAGCCTTGAATCTCTATCATGATCAAGAAGCCTCAGAAGTCAAACAGGAGTGTTC
 CTTTCTTGATCCTTAGCCTATGAGATCTGGATGTGCATTGTGTTTGCCTACATTGGGGTCAAGTGTAGTT
 TTATTCCTGGTCAAGCAGATTTAGCCCTACGAGTGGCACACTGAGGAATTTGAAGATGGAAGAGAAACAC
 AAAGTAGTGAATCAACTAATGAATTTGGGATTTTTAATAGTCTCTGGTTTTCTTGGGTGCCTTTATGCG
 GCAAGGATGCGATATTTGCAAGATCTCTCTCTGGGCGCATTGTTGGAGGTGTGTGGTGGTTCTTTACC
 CTCATCATCATCTCCTCTACACGGCTAACTTAGCTGCCTTCTGACTGTAGAGAGGATGGTGTGCGCCA
 TCGAAAGTGTGAGGATCTGTCTAAGCAAACAGAAATGCTTATGGAACATTAGACTCTGGCTCCACTAA
 AGAGTTTTTTCAGGAGATCTAAATTCAGTGTGTTGATAAAATGTGGACTTATATGAGGAGTGCAGAGCCC
 TCTGTGTTGTGAGGACTACGGCAGAAGGAGTAGCCAGAGTCAGGAAATCCAAAGGGAAGTATGCCTACT
 TGCTGGAGTCCACAATGAATGAGTACATCGAGCAGAGGAAGCCTTGGCACACCATGAAAGTGGGCGGCAA
 CCTGGATTCCAAAGGCTACGGCATCGCCACACCTAAAGGATCCTCATTAAAGAAATGCGGTTAACCTCGCA
 GTACTAAAATGAATGAACAAGGCTGTTGGACAATTTGAAAAACAAATGGTGGTACGACAAAGGAGAGT
 GCGGCAGCGGGGAGGTGATTCCAAGGAAAAGACCAGTGCCTCAGTCTGAGCAACGTTGCTGGAGTATT
 CTACATCCTTGTGCGGGCCTTGGTTTGGCAATGCTGGTGGCTTTGATTGAGTTCTGTTACAAGTCAAGG
 GCCGAGGCGAAACGAATGAAGGTGGCAAAGAATGCACAGAATATTAACCCATCTTCTCGCAGAATTCCC
 AGAATTTTGAACCTATAAGGAAGGTTACAACGTATATGGCATCGAGAGTGTAAAT

ACGCGTACGCGGCCGCTCGAG – GFP Tag – GTTTAA

Protein Sequence: >MG227065 representing NM_013540
 Red=Cloning site Green=Tags(s)

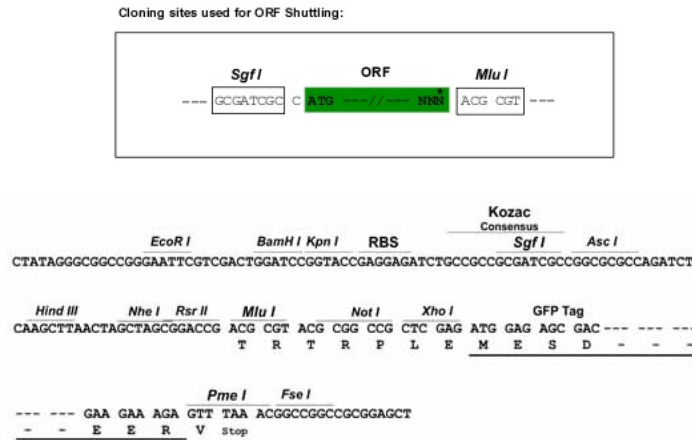
MQKIMHISVLLSPVLWGLIFGVSSNSIQIGGLFPRGADQEYSAFRVGMVQFSTSEFRLTPHIDNLEVANS
 FAVTNAFCSQFSRGVYAIFGFYDKKSVNTITSFCGTLHVSFITPSFPTDGTTHPFVIQMRPDLKGALLSLI
 EYYQWDFAYLYDSDRGLSTLQAVLDSAAEKWQVTAINVGNINNDKKDETYRSLFQDLELKKERRVILD
 CERDKVNDIVDQVITIGKHVKGYHYIIANLGFDTGDLLKIQFGGANVSGFQIVDYDDSLVSKFIERWSTL
 EEKEYPGAHTATIKYTSALTYDAVQVMTEAFRNLKQRIEISRRGNAGDCLANPAVPWGQGVIEIALKQ
 VQVEGLSGNIKFDQNGKRINYTIMELKTNGPRKIGYWEVDKMMVVTLELPSGNDTSGLENKTVVVT
 ILESPYMMKKNHEMLEGNEREYEGYCVDLAAEIAKHCGFKYKLTIVGDGKYGARDADTKIWNMGVGLVY
 GKADIAIAPLTITLVREEVIDFSKPFMSLGISIMIKKPKQSKPGVFSFLDPLAYEIWMCIVFAYIGVSVV
 LFLVSRFSPYEWHTTEFDGRETQSSESTNEFGIFNSLWFSLGAFMRQGCDSRSLSGRIVGGVWFFFT
 LIIISSYANLAAFLTVERMVSPIESAEDLSKQTEIAYGTLDSGSTKEFFRRSKIAVFDKMWTYMRSAEP
 SVFVRTTAEGVARVRKSKGKYAYLLESTMNEYIEQRKPCDTMKVGGNLDKSGYGIATPKGSSLRNAVNLA
 VLKLENEQLLDKLNKWWYDKGECGSGGDSKEKTSALSLSNVAGVFYILVGGLGLAMLVALIEFCYKSR
 AEAKRMKVAKNAQNINPSSSQNSQNFATYKEGYNVYIGIESVKI

TRTRPLE - GFP Tag - V

Restriction Sites:

SgfI-MluI

Cloning Scheme:



Plasmid Map:


ACCN: NM_013540

ORF Size: 2649 bp

OTI Disclaimer: Due to the inherent nature of this plasmid, standard methods to replicate additional amounts of DNA in E. coli are highly likely to result in mutations and/or rearrangements. Therefore, OriGene does not guarantee the capability to replicate this plasmid DNA. Additional amounts of DNA can be purchased from OriGene with batch-specific, full-sequence verification at a reduced cost. Please contact our customer care team at custsupport@origene.com or by calling 301.340.3188 option 3 for pricing and delivery.

The molecular sequence of this clone aligns with the gene accession number as a point of reference only. However, individual transcript sequences of the same gene can differ through naturally occurring variations (e.g. polymorphisms), each with its own valid existence. This clone is substantially in agreement with the reference, but a complete review of all prevailing variants is recommended prior to use. [More info](#)

OTI Annotation: This clone was engineered to express the complete ORF with an expression tag. Expression varies depending on the nature of the gene.

Components: The ORF clone is ion-exchange column purified and shipped in a 2D barcoded Matrix tube containing 10ug of transfection-ready, dried plasmid DNA (reconstitute with 100 ul of water).

Reconstitution Method:

1. Centrifuge at 5,000xg for 5min.
2. Carefully open the tube and add 100ul of sterile water to dissolve the DNA.
3. Close the tube and incubate for 10 minutes at room temperature.
4. Briefly vortex the tube and then do a quick spin (less than 5000xg) to concentrate the liquid at the bottom.
5. Store the suspended plasmid at -20°C. The DNA is stable for at least one year from date of shipping when stored at -20°C.

RefSeq: [NM_013540.3](#)

RefSeq Size: 6841 bp

RefSeq ORF: 2652 bp

Locus ID: 14800

Cytogenetics: 3 35.5 cM

Gene Summary: Glutamate receptors are the predominant excitatory neurotransmitter receptors in the mammalian brain and are activated in a variety of normal neurophysiologic processes. This gene product belongs to a family of glutamate receptors that are sensitive to alpha-amino-3-hydroxy-5-methyl-4-isoxazole propionate (AMPA), and function as ligand-activated cation channels. These channels are assembled from 4 related subunits, Gria1-4. The subunit encoded by this gene (Gria2) is subject to RNA editing (CAG->CGG; Q->R) within the second transmembrane domain, which is thought to render the channel impermeable to Ca(2+). Alternative splicing, resulting in transcript variants encoding different isoforms, (including the flip and flop isoforms that vary in their signal transduction properties), has been noted for this gene. [provided by RefSeq, Jul 2008]