

## Product datasheet for **MG227060**

### Gsn (NM\_146120) Mouse Tagged ORF Clone

#### Product data:

Product Type:	Expression Plasmids
Product Name:	Gsn (NM_146120) Mouse Tagged ORF Clone
Tag:	TurboGFP
Symbol:	Gsn
Synonyms:	ADF
Mammalian Cell Selection:	Neomycin
Vector:	pCMV6-AC-GFP (PS100010)
E. coli Selection:	Ampicillin (100 ug/mL)



[View online »](#)

ORF Nucleotide  
Sequence:

>MG227060 representing NM\_146120  
 Red=Cloning site Blue=ORF Green=Tags(s)

TTTTGTAATACGACTCACTATAGGGCGGCCGGAATTCGTCGACTGGATCCGGTACCGAGGAGATCTGCC  
 GCC**CGGATCGCC**

ATGGCTCCGTACCGCTCTTCACTGCTCTGCGCGTCTCTCTCTGGCGCTGTGCGCACTGTGCGCTTCCC  
 ATGCAGCCACCACATCACGGGGCAGGGCCCAAGAGAGGGCGCCCAAGTCTGGGTGTCTGAGGCGCGGCC  
 CAGCACTATGGTGGTGGAGCACCCGAATTCCTGAAGGCAGGGAAGGAGCCTGGCCTGCAGATCTGGCGT  
 GTGGAGAAGTTTACCTGGTGCCTGTGCCCCCAACCTCTATGGAGACTTCTTACGCGGTGATGCCTATG  
 TCATCCTAAAGACTGTGCAGCTGAGGAATGGGAATCTGCAGTATGACCTCCACTATTGGCTGGGCAATGA  
 ATGCAGCCAGGATGAGAGCGGGCTGCTGCCATCTTTACTGTGCAACTGGATGACTACCTGAACGGCCGG  
 GCTGTACAGCACCGTGGGTTTCAAGGCTTTGAGTCGTCACCTTCTCCGGCTACTTCAAGTCTGGACTTA  
 AGTACAAGAAAGGAGGTGTGGCATCTGGATTCAAACACGTGGTACCCAATGAGGTGGTGGCCAGAGGCT  
 CTTCCAGGTCAAAGGACCGCTGTAGTCCGTGCTACTGAGGTACCTGTGTCTGGGACAGTTTCAACAAT  
 GCGGACTGCTTATTCTGGACCTGGGAAACAATATCTATCAGTGGTGTGGCTCTGGCAGCAACAATTTG  
 AAAGGCTGAAGGCCACACAGGTGTCCAAGGGCATCCGGGACAACGAGAGGAGTGGCCGTGCTCAAGTACA  
 CGTGTCTGAAGAGGGAGGAGAGCCAGAAGCCATGCTGCAGGTGCTGGGCCCAAGCCAGCTCTGCCTGAA  
 GGTACCGAGGACACAGCCAAGGAAGATGCAGCCAACCGAAGGCTGGCCAAGCTCTACAAGTCTCCAACG  
 GTGCAGGTAGCATGTGCTCCTAGTGGTGTGAGAACCCCTTCCGCCAGGGCGCCCTGAGACTGA  
 GGACTGCTTATCCTGGACCATGGCAGAGATGGGAAAATCTTTGTTTGGAAAGGCAAGCAGGCCAACATG  
 GAGGAGCGGAAGGCTGCCCTCAAACAGCCTCTGACTTCATCTCCAAGATGCAGTACCCAGGCAGACCC  
 AGGTTTCAGTTCTCCAGAGGGCGGTGAGACCCCTCTTTAAGCAGTTCTTCAAGAAGTGGCGGGACCC  
 AGACCAGACAGACGGCCCGGCCCTGGGCTACCTCTCCAGCCACATTGCCAACGTGGAGCGCGTACCTTTC  
 GATGCTGTACGCTGCACACCTCCACCGCCATGGCCGCTCAGCACGGCATGGATGATGATGGAAGTGGCC  
 AGAAACAGATCTGGAGAATTGAAGGTTCCAACAAGGTGCCAGTGGACCCTGCCACATACGGGCAGTTCTA  
 TGGAGGCGACAGCTACATCATTCTGTACAACTACCGCCACGGTGGCCGCCAGGGACAGATCATCTACAAC  
 TGGCAGGGTGGCCAGTCTACCCAGGATGAGGTTGCTGCTTCTGCCATCCTGACTGCCAGCTGGATGAGG  
 AGCTGGGAGGAACTCCTGTCCAGAGCCGAGTGGTCCAAGGCAAAGAGCCTGCACACCTCATGAGCTTGTT  
 TGGCGGGAAGCCATGATCATCTACAAGGTGGCACCTCCCGTGTGGTGGGCGAGACAGCTCCTGCCAGT  
 ATCCGCTCTTCCAAGTGCAGCCAGCAGCTCTGGAGCCACCAGGGCTGTGGAGGTGATGCCTAAGTCTG  
 GTGCTCTGAACTCCAACGATGCCTTTGTGCTGAAAACCCCTCCGCTGCCTACCTGTGGTGGGCGCAGG  
 AGCCAGTGAAGCGGAGAAGACCGGCGCCAGGAGCTTCTGAAGGTGCTTCGGTCCCAGCATGTGCAGGTG  
 GAAGAAGGCAAGTGAAGCAGATGCCTTCTGGGAGGCTCTGGGCGGGAAGACTGCCTACCGCACATCCCCCA  
 GGCTTAAGGACAAGAAGATGGATGCCCATCCTCCTCGACTCTTTGCTGCTCCAACAGGATCGGACGCTT  
 TGTGATCGAAGAGGTTCTGGCGAGCTTATGCAGGAAGACCTGGCTACTGATGACGTGATGCTCCTGGAC  
 ACCTGGGACCAGGCTTTGTCTGGGTTGGAAAAGACTCCAGGAAGAGGAAAAGACGGAAGCCTTGACTT  
 CTGCTAAGCGGTACATCGAGACAGATCCAGCAAATCGGGACAGGGCGACCCCATCACAGTCGTTAGGCA  
 GGGCTTTGAGCCTCCTTCTTCTGGGCTGGTTCTCGGCTGGGATGACAACACTGCTCGGTGGATCCT  
 TTGGACCGGCCCTTGCTGAGCTGGCTGCC

**ACGCGT**ACGCGGCCGCTCGAG – GFP Tag – GTTTAA

Protein Sequence: >MG227060 representing NM\_146120  
 Red=Cloning site Green=Tags(s)

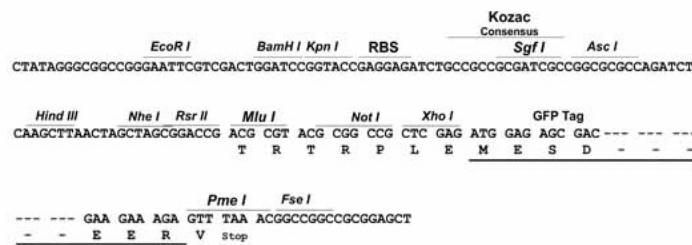
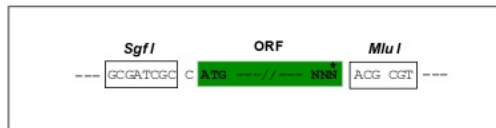
MAPYRSSLLCALLLLALCALSPSHAATTSRGRAQERAPQSRVSEARPSTMVVEHPEFLKAGKEPGLQIWR  
 VEKFDLVPVPPNLYGDFFTGDAYVILKTVQLRNGNLQYDLHYWLGNECSQDESGAAAIFTVQLDDYLNGR  
 AVQHREVQGFESSTFSGYFKSGLKYKGGVASGFKHVVNPNEVVQRLFQVKGRRVVRATEVPVSWDSFNN  
 GDCFILDLGNNIYQWCGSGSNKFERLKATQVSKGIRDNERSGRAQVHVSEEGEPEAMLQVLGPKPALPE  
 GTEDTAKEDAANRRLAKLYKVSNGAGSMSVSLVADENPFAQGALRSEDCFILDHGRDGGKIFVWKGKQANM  
 EERKAALKTASDFISKMQYPRQTQVSVLPEGGETPLFKQFFKNWRDPDQTDGPGLGYLSSHIANVERVPF  
 DAATLHTSTAMAAQHGMDDGTGQKQIWRIEGSKVPVDPATYGGFYGGDSYIILYNYRHGGRQGIYN  
 WQGAQSTQDEVAASAILTAQLDEELGGTPVQSRVVQKPEAHLMSLFGGKPMIIYKGGTSRDGGQTAPAS  
 IRLFQVRASSSGATRAVEVMPKSGALNSNDAFVLKTPSAAYLWVGAGASEAEKTGAQELLKVLRSQHVVQV  
 EEGSEPDFAWEALGGKTAYRTSPRLKDKKMDAHPPLRFACSNRIGRFVIEEVPGELMQEDLATDDVMLLD  
 TWDQVFWVWGKDSQEEKTEALTSAKRYIETDPANRRRTPITVVRQGFEPSPFVGWFLGWDNNYWSVDP  
 LDRALAEALAA

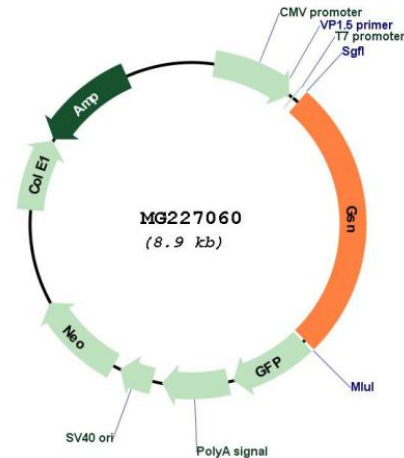
TRTRPLE - GFP Tag - V

Restriction Sites: SgfI-MluI

Cloning Scheme:

Cloning sites used for ORF Shuttling:



**Plasmid Map:**


**ACCN:** NM\_146120

**ORF Size:** 2340 bp

**OTI Disclaimer:** The molecular sequence of this clone aligns with the gene accession number as a point of reference only. However, individual transcript sequences of the same gene can differ through naturally occurring variations (e.g. polymorphisms), each with its own valid existence. This clone is substantially in agreement with the reference, but a complete review of all prevailing variants is recommended prior to use. [More info](#)

**OTI Annotation:** This clone was engineered to express the complete ORF with an expression tag. Expression varies depending on the nature of the gene.

**Components:** The ORF clone is ion-exchange column purified and shipped in a 2D barcoded Matrix tube containing 10ug of transfection-ready, dried plasmid DNA (reconstitute with 100 ul of water).

**Reconstitution Method:**

1. Centrifuge at 5,000xg for 5min.
2. Carefully open the tube and add 100ul of sterile water to dissolve the DNA.
3. Close the tube and incubate for 10 minutes at room temperature.
4. Briefly vortex the tube and then do a quick spin (less than 5000xg) to concentrate the liquid at the bottom.
5. Store the suspended plasmid at -20°C. The DNA is stable for at least one year from date of shipping when stored at -20°C.

**RefSeq:** [NM\\_146120.4](#), [NP\\_666232.2](#)

**RefSeq Size:** 2663 bp

**RefSeq ORF:** 2343 bp

**Locus ID:** 227753

**UniProt ID:** [P13020](#)

**Cytogenetics:** 2 23.5 cM

**Gene Summary:**

Calcium-regulated, actin-modulating protein that binds to the plus (or barbed) ends of actin monomers or filaments, preventing monomer exchange (end-blocking or capping). It can promote the assembly of monomers into filaments (nucleation) as well as sever filaments already formed. Plays a role in ciliogenesis.[UniProtKB/Swiss-Prot Function]