

## Product datasheet for **MG227050**

### Itgax (NM\_021334) Mouse Tagged ORF Clone

#### Product data:

**Product Type:** Expression Plasmids  
**Product Name:** Itgax (NM\_021334) Mouse Tagged ORF Clone  
**Tag:** TurboGFP  
**Symbol:** Itgax  
**Synonyms:** AI449405; Cd11c; Cr4; N418  
**Mammalian Cell Selection:** Neomycin  
**Vector:** pCMV6-AC-GFP (PS100010)  
**E. coli Selection:** Ampicillin (100 ug/mL)  
**ORF Nucleotide Sequence:** >MG227050 representing NM\_021334  
 Red=Cloning site Blue=ORF Green=Tags(s)

TTTTGTAATACGACTCACTATAGGGCGGCCGGAATTCGTCGACTGGATCCGGTACCGAGGAGATCTGCC  
 GCC**CGATCGCC**

ATGAGCTGTACCTGGATAGCCTTTCTTCTGCTGTTGGGGTTTGTTCCTGTCTTGGCTTCAACTGGATG  
 CAGAGAAGCTGACACATTTTCACATGGACGGTGTGAGTTCGGACACAGTGTGCTCCAGTATGATAGTTC  
 CTGGGTGGTGGTGGAGCACAAAGGAAATAAAAGCCACTAACCAATAGGTGGCCTCTACAATGTGGC  
 TATCACACAGGCAACTGTGAGCCATCTCCCTCCAGGTGCCCCAGAGGCTGTGAACATATCCCTGGCC  
 TGTCCCTTGTGCTGCCACCAACCTTCTGGCTGTTGGCTTGTGGTCTACTGTGCACCACACATGCAG  
 AGAGAATATATACTTGACAGGGCTCTGCTTCTACTGAGTTCATCATTCAAGCAGAGCCAGAATCCCA  
 ACTGCACAGCAGGAGTGTCCAAAGCAAGACCAAGACATCGTGTTCCTGATTGATGGCTCGGGTAGCATCA  
 GTTCCACAGATTTTGAATAATGCTGGACTTTGTAAAGCTGTGATGAGCCAGCTTCAGAGACCTAGCAC  
 ACGGTTCTCCCTGATGCAGTTCTCTGATTACTTCCGAGTACATTTACTTTCAACAATTCATCTCCACG  
 TCAAGCCCTTAAAGTCTGTTGGGTTCTGTAAGGCAGCTAAGAGGGTACACATACACAGCCTCGGCTATCA  
 AGCATGTCATAACAGAACTGTTCAACCCAAAGTGGAGCTCGGCAAGATGCCACCAAGGTCCTCATTGT  
 CATCACTGATGGGAGAAAACAAGGGGACAACCTTGAGTTATGATAGTGTATCCCCATGGCAGAGGCTGCA  
 AGCATTCGTTATGCAATTGGGTAAGGAAAGGCTTTTACAATGAACATCCAAGCAAGAAATTAAGG  
 CCATTGCATCGATGCCTTCCCATGAATACGTATTCAGCGTGGAGAACTTTGATGCTTTGAAGGATATTGA  
 GAATCAGCTGAAGGAGAAGATCTTTGCCATTGAGGGCACAGAGACCAAGCAGCAGTACTTTTGAATTG  
 GAGATGTCCCAGGAGGGCTTCAGTGTGTTTACACCTGATGGACCAGTTCTGGGGCTGTGGGAAGCT  
 TCAGCTGGTCTGGAGGTGCCTTCTGTACCCTCAAATATGAGACCCACCTTCATCAACATGTCTCAGGA  
 GAACGAGGACATGAGGGACGCTTACCTGGGTTACTCCACCGCACTGGCCTTTTGAAGGGGGTCCACAGC  
 CTGATCCTGGGGGCCCTCGCCACCAGCACACGGGAAGGTTGTCATCTTACCAGGAATCCAGGCACT  
 GGAGGCCAAGTCTGAAGTCAGAGGGACACAGATCGGCTCCTACTTTGGGCATCTCTTTGTTCTGTGGA  
 CATGGATAGAGATGGCAGCACTGACCTGGTCTGATTGGAGTCCCCATTACTATGAGCACACCCGAGGG



[View online »](#)

GGGCAGGTGTCAGTGTGCCCATGCCCGGTGTGGGGAGCAGGTGGCATTGTGGGACCACCCTCCATGGGG  
AGCAGGGCCATCCTTGGGGCCGCTTTGGGGCGGCTCTGACAGTGTAGGGGACGTGAATGGGGACAGTCT  
GGCAGATGTGGCTATTGGTGCACCCGGAGAGGAGGAGAACAGAGGTGCTGTCTACATATTTTCATGGAGCC  
TCAAGACAGGACATCGCTCCCTCACCCAGCCAGAGGATTTTCAGCATCCCAGATCCCCTCCAGGATTAAT  
ATTTTGGGCAGTCACTGAGTGGGGGCCAGGACCTACCCGGGATGGACTGGTGGATCTGGCCGTGGGCTC  
CAAGGGACGCGTCTGTCTCAGGACCAGACCAATTCTAGAGTGTACCAACTGTTCACTTCACACTC  
GCAGAGATTTCCAGGTCTGTGTTTGTGAGTGTGAGGAGCAGGTGGCCCTGAGCAGACACTGAGTGTGCCA  
CTGCTGCTTTCATATTCATGAAAGCCCCAAGACCCAACCTAGGTGACCTCCGAAGTACTGTACCTTTGA  
CCTGGCTCTAGACCATGGCCGTCTGAGTACCCGGGCCATCTTCAAGGAGACAAAGACCCGGGCTCTGACT  
CGAGTTAAAACCTTTGGTCTGAACAAGCACTGTGAAAGTGTGAAGTTGCTTCTCCCGGCCTGTGTGGAGG  
ACTCAGTGACCCCGATCACTCTTCGCTCAACTTTTCTTGTGGTGTGCCCATCAGTTCCTTACAAAA  
TCTCAACCCATGCTGGCTGTAGATGACCAACGTACTTCACGGCCTCTTCCCTTTGAGAAGAACTGT  
GGAGCTGACCACATCTGCCAGGATGACCTTAGTGTGATTTGGCTTCCAGACTGAAGACCCTGGTGG  
TGGGAAGTGACCTGGAGCTGAATGTAGATGTGACGGTGTCTAATGATGGAGAAGATTCTACGGAACCAC  
AGTCACCTGTTCTACCCCGTGGTCTGTCTTTAGACGAGTTGCAGAAGCCAAGTATTCCTTCGGAAG  
AAAGAGGACCAGCAGTGGCAGCGCGTGGGCAGCACTCCCTGCACCTCATGTGTGACAGCACCCAGACA  
GGAGTCAGGGCCTCTGGAGTACCAGCTGTAGCAGCAGACATGTCATTTCCGTGGAGGCTCACAGATGAC  
TTTTTTGGTAACCTTTGACGTCTCCCCAAAGCTGAGCTGGGGGACCCGGCTGCTTCTAAGAGCCAGAGTG  
GGAAGTGAGAATAATGTACCCGGAACCCAAAAACCACCTTCCAGTTGGAGCTTCCAGTAAAAATGCGG  
TGTACACCATGATCAGCAGCCATGACCAGTTTACCAAGTATCTTAACTTCTCAACCTCAGAAAAGGAGAA  
GACCAGTGTGGTGAACATAGATTCCAGGTGAATAACCTGGGCCAGAGAGACGTGCCAGTCAGCATCAAC  
TTTTGGGTGCCCATAGAGCTGAAGGGAGAAGCTGTGTGGACAGTGTGGTCTCCACCCCTCAGAACCAC  
TCACCCAATGCTATCGGAATAGACTCAAGCCAACACAATTTGACCTCCTGACTCACATGCAAAAAGAGTCC  
CGTGTGGACTGCTCCATCGCTGACTGCCTGCACCTCCGCTGTGACATCCCTCCTTGGGCATCCTGGAT  
GAGCTTTACTTATTCTGAAGGGCAACCTCAGCTTCGGCTGGATCAGTCAGACATTGCAGAAAAAGGTGT  
TGCTCCTGAGTGAGGCTGAAATCACATTCAACACATCTGTGATTTCCAGCTGCCGGGACAGGAGGCATT  
TCTGAGAGCCCAGACGAAGACAGTGTGGAGATGTATAAAGTTCACAACCCCGTCCCTCTTATCGTGGG  
AGCTCAGTGGGAGGTCTGCTGCTGCTGGCTATCATCACAGCTATACTTTACAAGGCTGGTTTCTTCAAAC  
GTCAGTACAAGGAGATGTTGGAGGAAGCAAATGGACAGTTTGTCTCAGACGGGACCCCAACTCCCAGGT  
TGCCAG

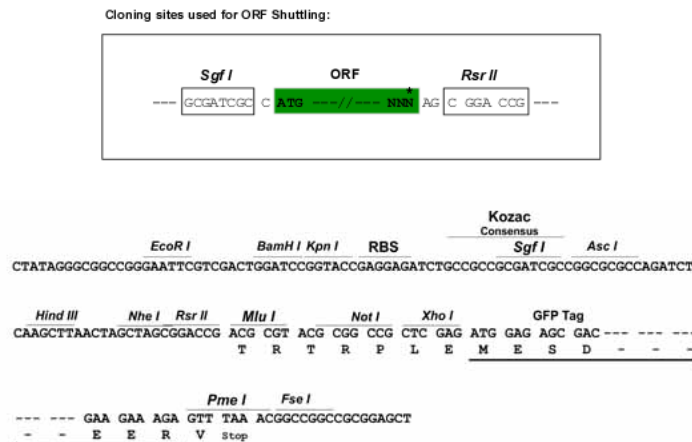
AGCGGACCGACGCGTACGCGGCCGCTCGAG – GFP Tag – GTTTAA

**Protein Sequence:** >MG227050 representing NM\_021334  
 Red=Cloning site Green=Tags(s)

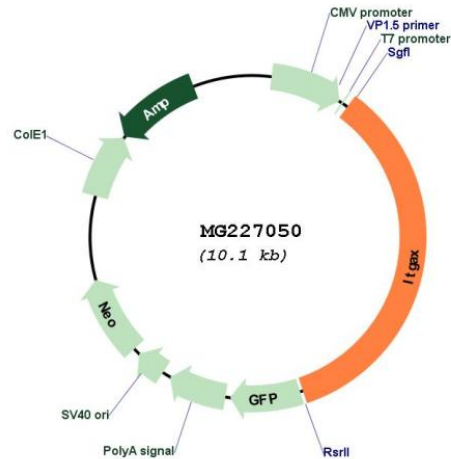
MSCTWIAFLLLLGFVSLGFNLDAEKLTHFHMDGAEFGHSLVLYDSSWVVGAPKEIKATNQIGGLYKCG  
 YHTGNCEPISLQVPEAVNISLGLSLAAATNPSWLLACGPTVHHTCRENIYLTGLCFLSSSFKQSQNFP  
 TAQQECPKQDQDIVFLIDGSGSISSTDFEKMLDFVKAVMSQLQRPSTRFSLMQFSDYFRVHFTFNNFIST  
 SSPLSLLGSVRQLRGYTYTASAIKHVITELFTTQSGARQDATKVLIVITDGRKQGDNLSDYSVIPMAEAA  
 SIIRYAIIGVGKAFYNEHSKQELKAIASMPSEHYVFSVENFDALKDIENTLKEKIFAIEGTETPSSSTFEL  
 EMSQEGFSAVFTPDGPVLGAVGSFWSGGAFLYPSNMRPTFINMSQENEDMRDAYLGYSTALAFWKGVHS  
 LILGAPRHQHTGKVVIFTQESRHWRPKSEVRGTQIGSYFGASLCSVMDRDRGSTDVLVIGVPHYEHTRG  
 GQVSVCPMPGVSRWHCGTTLHGEQGHWPGRFGAALTVLGDVNGDSLADVAIGAPGEEENRGAVYIFHGA  
 SRQDIAPSPSQRISASQIPSRIQYFGQSLSGGQDLTRDGLVDLAVGSKGRVLLLRTRPILRVSPVHFTF  
 AEISRSVFECQEQVAPEQTLSDATVCLHIHESPKTQLGDLRSTVTFDLALDHGRLSTRAIFKETKTRALT  
 RVKTLGLNKHCVKLLLPACVEDSVPTITLRLNFSLVGVPISSLQNLQPLAVDDQTYFTASLPFEKNC  
 GADHICQDDL SVVFGFDPDLKTLVVGSDLELNVDVTVSNDGEDSYGTTVTLFYPVGLSFRRAEGQVFLRK  
 KEDQQWRRGQHSLHLMCDSTPDRSQGLWSTSCSSRHVIFRGGSQMTFLVTFDVSPKAELGDRLLLRARV  
 GSENNVPGTPKTTFQLELPVKYAVYTMISSHDQFTKYLNFSTSEKETSVEHRFQVNNLQORDVPVSI  
 FWVPIELKGEAVWTVMVSHPNPLTQCYRNLKPTQFDLLTHMQSPVLDCSIADCLHLRCDIPSLGILD  
 ELYFILKGNLSFGWISQTLQKKVLLSEAEITFNTSVYSQLPGQEAFLRAQTKTVLEMYKVHNPVPLIVG  
 SSVGGLLLLAITAILYKAGFFKRQYKEMLEEANGQFVSDGTPTPQVAQ

SGPTRRRLE - GFP Tag - V

**Restriction Sites:** SgfI-RsrII  
**Cloning Scheme:**



## Plasmid Map:



ACCN: NM\_021334

ORF Size: 3507 bp

OTI Disclaimer: The molecular sequence of this clone aligns with the gene accession number as a point of reference only. However, individual transcript sequences of the same gene can differ through naturally occurring variations (e.g. polymorphisms), each with its own valid existence. This clone is substantially in agreement with the reference, but a complete review of all prevailing variants is recommended prior to use. [More info](#)

OTI Annotation: This clone was engineered to express the complete ORF with an expression tag. Expression varies depending on the nature of the gene.

Components: The ORF clone is ion-exchange column purified and shipped in a 2D barcoded Matrix tube containing 10ug of transfection-ready, dried plasmid DNA (reconstitute with 100 ul of water).

Reconstitution Method:

1. Centrifuge at 5,000xg for 5min.
2. Carefully open the tube and add 100ul of sterile water to dissolve the DNA.
3. Close the tube and incubate for 10 minutes at room temperature.
4. Briefly vortex the tube and then do a quick spin (less than 5000xg) to concentrate the liquid at the bottom.
5. Store the suspended plasmid at -20°C. The DNA is stable for at least one year from date of shipping when stored at -20°C.

RefSeq: [NM\\_021334.3](#)

RefSeq Size: 4025 bp

RefSeq ORF: 3510 bp

Locus ID: 16411

UniProt ID: [Q9QXH4](#)

Cytogenetics: 7 F3

**Gene Summary:**

Integrin alpha-X/beta-2 is a receptor for fibrinogen. It recognizes the sequence G-P-R in fibrinogen. It mediates cell-cell interaction during inflammatory responses. It is especially important in monocyte adhesion and chemotaxis (By similarity).[UniProtKB/Swiss-Prot Function]