

## Product datasheet for **MG227027**

### Caps2 (NM\_178278) Mouse Tagged ORF Clone

#### Product data:

Product Type:	Expression Plasmids
Product Name:	Caps2 (NM_178278) Mouse Tagged ORF Clone
Tag:	TurboGFP
Symbol:	Caps2
Synonyms:	D630005B03Rik
Mammalian Cell Selection:	Neomycin
Vector:	pCMV6-AC-GFP (PS100010)
E. coli Selection:	Ampicillin (100 ug/mL)



[View online »](#)

**ORF Nucleotide Sequence:**

>MG227027 representing NM\_178278  
 Red=Cloning site Blue=ORF Green=Tags(s)

TTTTGTAATACGACTCACTATAGGGCGGCCGGAATTCGTCGACTGGATCCGGTACCGAGGAGATCTGCC  
 GCC**CGGATCGCC**

ATGGTCCCACCACTTGATCTGGGAAGCCTTGTTGACTCTGATGAGGAGGATAATTTTTCACAACACCAC  
 GTGGTACAGTCCATGTTTCATCTTAACCCACCGCGTACAGCCTGCTCTGGGCTGGGTTCTGCCATGTCA  
 AAGACCTGACAGTCAGCATCGACTACAGGAAGTGAACAGGACGTAATACCTGAGGATTTGCCAGCGCCA  
 ACAGGCAAATACAGGCTAAAGTACCAGCAGTACGCAAGTGAATGAAAGACGGCTACAAGCAGTATATTC  
 AGAGGAGTACAGAGAAGCCAAAGGCAGCCAGCAGGCCAGAGGCAACCGAGAAGGTGGAAGGAGCCAGTCT  
 GGATGACCTCATGACTTTGGATAGGAAGGCCCTTACAGCAAGTTACGCAGATAGCCCTTACGGTAGA  
 CAGAGCATCACGAGGAAATCAGATGTGGAGACTGTGGCTATAGAGAAGAAGAAACAGACCGTTGCAGAGC  
 AGATGATGATGGACCCTTATCCAGGGCTGTATCAGCGACCCAGAACAAGATTTAAACACCAAGAACCA  
 AGAGAGTTCTCGTGTCCCTCCAGACTCAGAGAGGGCGCCACTTCGCGTCAGGAGACGAACTCTGCATGAA  
 ACGAAGATAAGAACCAACTCTGCATTAACAGAGAATGACCTTTCTCAGAAAGTAGAATTTGACGGGAGGG  
 TCTTATCAAGAAATGGACGCGATGCCTGCCGGAACTAATTGGGTTTTCTTTGCCACGACCAGTCCCT  
 AACTGTGTATGAATATCGGATGTTCCGGAAAAACAGAACAAGTGTGCTTCTTTTATAAAAAGACATT  
 TATCATCATCAGTGTGGACGAAGAAAAGGAAAGCAATATGAGCTTGGTGACGTCTATACTGGTGCAACTT  
 TGACATTTTTGAGCTGTGATCAACTAGCCTTCCAAGACCATAAAAGAAAAATGCATTGCTTAGACTTCG  
 AATTACAAATATTGATCAAGTAGCTTTGAATCTCTGAAAGCTGCCTCTGCGGAACATGGGAAGAAGAG  
 GCAGTCAGTCCGGAGGCTCATGATCAGTTGGTGTACAGGCCATTCAGGATAAATTGAAAGAACAACCTGC  
 ACAAGAAGGGTGTCTGATTTTTGACTGGATTGGGAAGATACTTCCAAGTTTTGGACAAGGAAGGAAATGG  
 GCTTTTAGAAAAGGCAGATTTTCAGCAAGCTCTGAAAACCTTTCACTTGGAAAGTGTCTGAACAGGACTTT  
 GAGTCTTTCTGGCTAATTCTGCAAGGATATGGCCATAGCAAGAACAAGTTGACTATGGAGAATTCAAAC  
 GTGCCATTTTTGGTGAATGAATGAATATAGGAAGTCAATTTGTTGCAAGGCCTTCATGCAACTGGATTT  
 TAACAAAACCGCATTGTGTCTGTAATAGACATAAGAAAGTGTACTGCGCAAGAAGCATCCACGTGTG  
 ATCTCAGGGCATTCAACAGAGGAGGAAATCAAATCATCTTTCTAGAGACGTTAAAGGCACCTGCAGCA  
 AGTGCGATGAAGTTTCATACGGAGAATTCGAAGATTACTATGAAGGCCTAAGTATAGGGGTAGCAGGCGA  
 TGAAGACTTTGTCAACATCTTACGTATTCCGTGGAGAATT

**ACGCGTACGCGGCCGCTCGAG** - GFP Tag - GTTTAA

**Protein Sequence:**

>MG227027 representing NM\_178278  
 Red=Cloning site Green=Tags(s)

MVPPDLGSLVDSDEEDNFSQTPRGTVHVHLNPPRSQPALGWVLPQRPDSQHRLQEVEQDVIPEDLPAP  
 TGKYRLKYQQYASEMKDGYKQYIQRSTKPKAASRPEATEKVEGASLDDLMTLDRKALLQQGYADSPYGR  
 QSITRKSVDVETVAIEKKKQTVAEQMMMDHL SRAV I SDPEQLNKNQESSRVPPD SERAPLRVRRRTLHE  
 TKIRTNSALTENDLSQKVEFDGRVLSRNGRDACRELIGFFFAHDQSLTVYFYRMFGKNRSTVLPFIKKDI  
 YHHQCGRRKQYELGDVYTGATLTFSLCDQPSLPKTIKENALLRLRITNIDQVALNSLKAASAEHGEE  
 AVSPEAHDQLVLQAIQDKLKEQLHKKGARILTGLGRYFQGLDKEGNLLEKADFQQALKTFHLEVSEQDF  
 ESFWLILQGYGHSKNKVDYGEFKRAIFGEMNEYRKSFRKAFMQLDFNKTGIVSVIDIRKCYCAKKHPRV  
 ISGHSTEEI KSSFLET LKGTCSK CDEVS YGEFEDYYEGLSIGVAGDEDFVNILRIPWRI

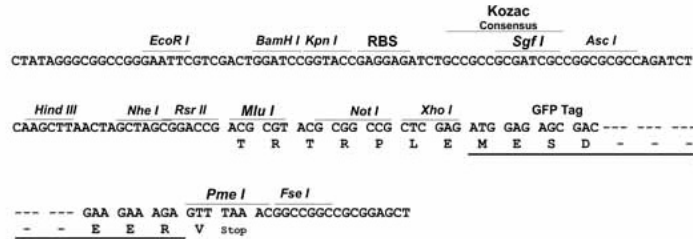
**TRTRPLE** - GFP Tag - V

**Restriction Sites:**

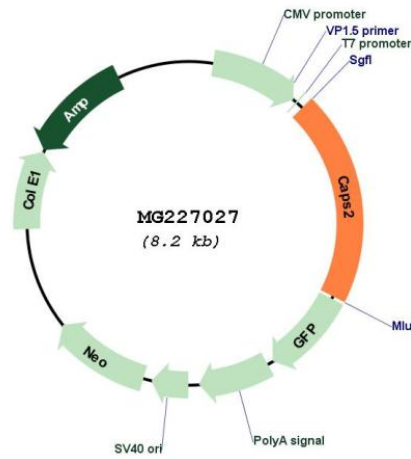
Sgfl-MluI

Cloning Scheme:

Cloning sites used for ORF Shutting:



Plasmid Map:



<b>ACCN:</b>	NM_178278
<b>ORF Size:</b>	1776 bp
<b>OTI Disclaimer:</b>	The molecular sequence of this clone aligns with the gene accession number as a point of reference only. However, individual transcript sequences of the same gene can differ through naturally occurring variations (e.g. polymorphisms), each with its own valid existence. This clone is substantially in agreement with the reference, but a complete review of all prevailing variants is recommended prior to use. <a href="#">More info</a>
<b>OTI Annotation:</b>	This clone was engineered to express the complete ORF with an expression tag. Expression varies depending on the nature of the gene.
<b>Components:</b>	The ORF clone is ion-exchange column purified and shipped in a 2D barcoded Matrix tube containing 10ug of transfection-ready, dried plasmid DNA (reconstitute with 100 ul of water).
<b>Reconstitution Method:</b>	<ol style="list-style-type: none"><li>1. Centrifuge at 5,000xg for 5min.</li><li>2. Carefully open the tube and add 100ul of sterile water to dissolve the DNA.</li><li>3. Close the tube and incubate for 10 minutes at room temperature.</li><li>4. Briefly vortex the tube and then do a quick spin (less than 5000xg) to concentrate the liquid at the bottom.</li><li>5. Store the suspended plasmid at -20°C. The DNA is stable for at least one year from date of shipping when stored at -20°C.</li></ol>
<b>RefSeq:</b>	<a href="#">NM_178278.4</a> , <a href="#">NP_840062.2</a>
<b>RefSeq Size:</b>	2760 bp
<b>RefSeq ORF:</b>	1779 bp
<b>Locus ID:</b>	353025
<b>UniProt ID:</b>	<a href="#">Q8BUG5</a>
<b>Cytogenetics:</b>	10 D2