

## Product datasheet for **MG227025**

### **Mtss1 (NM\_001146180) Mouse Tagged ORF Clone**

#### **Product data:**

Product Type:	Expression Plasmids
Product Name:	Mtss1 (NM_001146180) Mouse Tagged ORF Clone
Tag:	TurboGFP
Symbol:	Mtss1
Synonyms:	2310003N14Rik; BC024131; D130001D01Rik; Mim; mKIAA0429
Mammalian Cell Selection:	Neomycin
Vector:	pCMV6-AC-GFP (PS100010)
E. coli Selection:	Ampicillin (100 ug/mL)



[View online »](#)

**ORF Nucleotide Sequence:**

>MG227025 representing NM\_001146180  
 Red=Cloning site Blue=ORF Green=Tags(s)

TTTTGTAATACGACTCACTATAGGGCGGCCGGAATTCGTCGACTGGATCCGGTACCGAGGAGATCTGCC  
 GCC**CGCATCGCC**

ATGGAGGCTGTGATCGAGAAGGAATGCAGCGCGCTTGGAGGCCTCTCCAGACCATCATCAGCGACATGA  
 AGGGGAGCTATCCAGTTTGGGAAGACTTCATAAAACAAAGCCGAAAGCTACAGTCCAGCTGCGGACAAC  
 AGTAGTAGCAGCAGCTGCCTTCTTGACGCCTTTCAGAAAAGTGGCTGACATGGCCACCAACACACGTGGT  
 GGTACCCGGGAGATCGGCTCAGCTCTACCAGAATGTGCATGCGGCACCGGAGCATCGAGGCCAAGCTGA  
 GGCAGTTCTCCAGTGCTTTGATCGATTGCCTGATAAACCCACTGCAAGAACAATGGAGGAATGGAAGAA  
 AGTGGCCAACCAGCTGGACAAGGACCACGAAAAGAATAAAGAAAGCTCGACAAGAGATAAAAAAGAAG  
 TCCTCTGACACGCTGAAGCTGCAGAAGAAGGCAAAAAAGGGAGGGGCGACATCCAGCCTCAGTTGGACA  
 GCGCTCTCCAGGATGTCAACGATAAATACCTCCTGTTGGAGGAAACGGAGAAGCAGGCTGTGCGCAAGGC  
 ACTCATCGAAGAACGAGGCCGGTTCGCACCTTCATCTCTATGCTGCGGCCAGTGATCGAGGAAGAGATT  
 TCCATGTTAGGAGAGATTACCCACCTTCAGACCATATCGGAGGATCTGAAGAGCCTGACCATGGACCCTC  
 ACAAGCTGCCCTCCTCAAGTGAACAGGTGATTTTGGACTTGAAAGGTTCTGACTATAGTTGGTCCTATCA  
 GACGCCTCCTTCTTCCAGTACAACATATGTCCAGAAAGTCAAGTGTCTGCAGCAGCCTGAACAGCGTC  
 AACAGCAGTGACTCCCGGTCCAGTGGCTCCCACTCGCACTCGCCAGCTCGCATTACCGGTACCGCAGCT  
 CTAACCTGGCCCAGCAGGCCCGCTGAGGCTGTCCAGCGTGTCTCCACGACTCAGGATTCATATCCCA  
 GGACGCCTTCCAGTCCAAGTCAACCTCTCCATGCCACCTGAAGTGCACCAAGGAACTCGTCCAGCTCG  
 GCCTCTCCGAAGCGTCGAAACCTGCCAGTCAGTGAGCGAGTGCAGTCCCCACCTCAGTCAGCTCAG  
 GCTCTACCATGGGCGCTGGGTGTCCACAGAGAAGGACTGGGCAAGCCAGGACCCTATGACCAGCCACT  
 GGTGAACACCCTCCAGCGCCGCAAGAGAAACGTGAGCCAGACTCTAATGGGGGAGGACCCACTACGACA  
 GGAGGGCCACCTGCAGGTGCTGAAGAGGCGCAGAGACCAAGGAGCATGACGGTGTGAGTCCACCAGGC  
 CTGGTGAGGAGATGGCGCCTGTGAGGAACTGACACTCGCCCTGTCCCGGGCCTCCAGCTGGACGTGCA  
 GAGGAGCAGCCGGGACTCACTACAGTGTCCAGCGGCTACAGCACCCAGACCACCACCCCGTGTGCTCT  
 GAGGATACCATCCCCTCCAAGGTACGAGGCGCCAGCTTGCCGTCCGGCTTCCGGGCGGGTCCAGTTT  
 CAGATTACGATTATTTCTGTAAAGTGGCGACCAGGAGGCAGAGCAGCAAGAATTCGACAAGTCTCCAC  
 CATTCCAAGGAACAGTGACATCAGCCAGTCTTACAGGCGGATGTTCCAAGCCAAGCGTCCAGCCTCAACG  
 GCTGGCCTACCCACCACTCTCGGACCTGCTATGGTCCACACAGGGGTGGCGACCATCCGACGGACCCTT  
 CCACCAAGCCTTCTGTCCGCGGGGACCATCGGAGCTGGTCTATTCCCATCAAGACACCAGTGATCCC  
 TGTCAAAACCCCAACTGTCCAGACCTCCTGGGGTTTTGCCATCCCCTCCAGATGGGCCAGAGGAGCGG  
 GGTGAGCACAGCCCCGAGTCTCCATCTGCAGGGGAGGGGCCCCAGGGTGTGAGCAATATACCCTTCTCT  
 TGTGGAGTGGCCAAGCACCCGTCAACCTCCACTTCCAGGCCAAAGCCAGTATCCCTGAGGAACACAG  
 ACAGGGGATTCCAGAGAGCGAGGCTGAAGACCAGGAAAGGGACCCCAAGTGCCACTGTCTCCCGAGGC  
 CCGATTCCAGAGAGTGACCCCGCAGACCTGAGCCCCAGAGAAAGTCTCAGGGAGAAGACATGTTGAACG  
 CCATCCGGAGGGCGTGAAGCTGAAGAAGACGACCACCAACGATCGCTCAGCACCGCGCTTCTCT

**ACGCGT**ACGCGGCCGCTCGAG - GFP Tag - GTTTAA

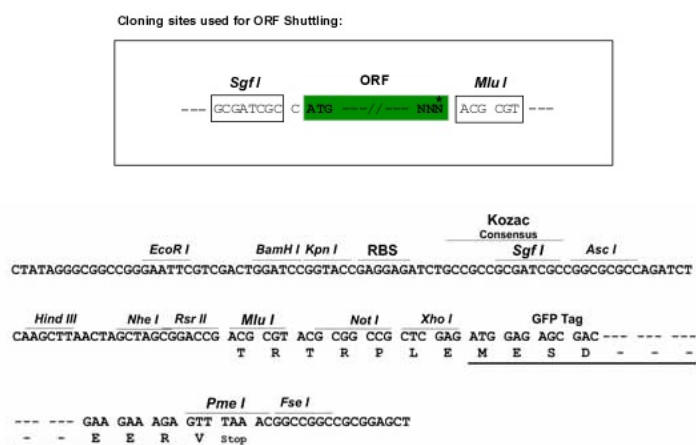
**Protein Sequence:** >MG227025 representing NM\_001146180  
 Red=Cloning site Green=Tags(s)

```
MEAVIEKECSALGGLFQTIISDMKGSYPVWEDFINKAGKLQSQLRRTTVVAAAFLDAFQKVADMATNTRG
GTREIGSALTRMCMRHRISIEAKLRQFSSALIDCLINPLQEEMWKKVANQLDKDHAKEYKARQEIKKK
SSDTLKLQKAKKGRGDIQPQLDSALQDVNDKYLLLEETEQAVERKALIEERGRFCTFISMLRPVIEEEEI
SMLGEITHLQTI SEDLKSLTMDPHKLPSSSEQVILD LKGS DYSWSYQTPPSSPSTTMSRKSSVCSSLNSV
NSSDSRSSGSHSPSSHYRYSNLAQQAPVRLSSVSSHDSGFI SQDAFQSKSPMPPEAANQNSSSS
ASSEASETQCSVSECSPTS SVSSGSTMGA WSTEKDWAKPGPYDQPLVNTLQRRKEKREPD SNGGGPTTT
GGPPAGAEAAQRPRSM TVSAATRPGEEMAACEEL TLALSRGLQLDVQRSSRDSLQCSSGYSTQTTTPCCS
EDTIP SQGTRRPACRPAFRAGPVSDYDYF SVSGDQEA EQEFDKSSTIPRNSDISQSYRRMFQAKRPAST
AGLPTTLGPAMVTPGVATIRRT PSTKPSVRRGTIGAGPIPIKTPVIPVKTPTVPDLPGVLPSPPDGPEER
GEHSPESPSAGEPQGVSNIPSS LWSGQAPVNPPLPGPKPSIPEEHRQAIP ESEAEDQERDPPSATVSPG
PIPEDPADLSPRESPQGEDMLNAIRRGV K L K K T T T N D R S A P R F S
```

TRTRPLE - GFP Tag - V

**Restriction Sites:** SgfI-MluI

**Cloning Scheme:**



**ACCN:** NM\_001146180

**ORF Size:** 2235 bp

**OTI Disclaimer:** The molecular sequence of this clone aligns with the gene accession number as a point of reference only. However, individual transcript sequences of the same gene can differ through naturally occurring variations (e.g. polymorphisms), each with its own valid existence. This clone is substantially in agreement with the reference, but a complete review of all prevailing variants is recommended prior to use. [More info](#)

**OTI Annotation:** This clone was engineered to express the complete ORF with an expression tag. Expression varies depending on the nature of the gene.

**Components:** The ORF clone is ion-exchange column purified and shipped in a 2D barcoded Matrix tube containing 10ug of transfection-ready, dried plasmid DNA (reconstitute with 100 ul of water).

**Reconstitution Method:**

1. Centrifuge at 5,000xg for 5min.
2. Carefully open the tube and add 100ul of sterile water to dissolve the DNA.
3. Close the tube and incubate for 10 minutes at room temperature.
4. Briefly vortex the tube and then do a quick spin (less than 5000xg) to concentrate the liquid at the bottom.
5. Store the suspended plasmid at -20°C. The DNA is stable for at least one year from date of shipping when stored at -20°C.

**RefSeq:** [NM\\_001146180.1](#), [NP\\_001139652.1](#)

**RefSeq Size:** 4933 bp

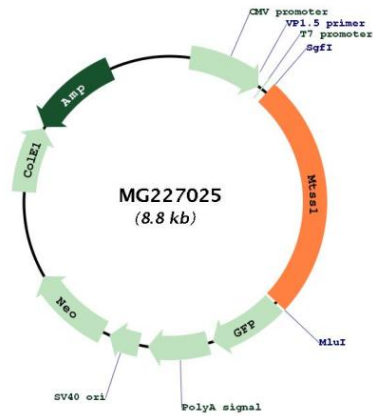
**RefSeq ORF:** 2238 bp

**Locus ID:** 211401

**Cytogenetics:** 15 D1

**Gene Summary:** Inhibits the nucleation of actin filaments in vitro.[UniProtKB/Swiss-Prot Function]

**Product images:**



Circular map for MG227025