

Product datasheet for **MG227019**

Tmpo (NM_001080132) Mouse Tagged ORF Clone

Product data:

Product Type:	Expression Plasmids
Product Name:	Tmpo (NM_001080132) Mouse Tagged ORF Clone
Tag:	TurboGFP
Symbol:	Tmpo
Synonyms:	5630400D24Rik; AI195756; AI606875; AW214352; AW547477; LAP2; TP
Mammalian Cell Selection:	Neomycin
Vector:	pCMV6-AC-GFP (PS100010)
E. coli Selection:	Ampicillin (100 ug/mL)
ORF Nucleotide Sequence:	>MG227019 representing NM_001080132 Red=Cloning site Blue=ORF Green=Tags(s)

TTTTGTAATACGACTCACTATAGGGCGGCCGGAATTCGTCGACTGGATCCGGTACCGAGGAGATCTGCC
GCC**CGATCGCC**

ATGCCGGAGTTCTAGAGGACCCCTCGGTCTGACCAAAGACAAGTTGAAGAGCGAGTTGGTCGCCAACA
ACGTGACGCTCCCGCCGGCGAGCAGCGCAAGGACGTGTACGTGCAGCTCTACCTGCAGCACCTCACGGC
GCGCAACCGCCCGCTCGCCGCGGGAGCCAACAGCAAAGGGCCCGCGACTTCTCGAGCGACGAGGAG
CGCGAGCCACGCCGGTCTCGGCTCCGGGCTCCGTGGTTCGCGCCGCGCGCCGTCGGCAGGAAAG
CCACAAAGAAAAGTATAAGCCAGGCTAGAAGATAAAGATGATCTGGATGTGACAGAGCTCTAATGA
AGAACTTCTGGATCAGCTTGAAGATATGGAGTGAATCCTGGTCCATTGTGGAAACAACAGGAAGCTA
TATGAGAAGAAGCTGTTGAAGCTGAGGGAGCAGGGAATGAATCGAGATCCTCTACTCCTTCCAACAG
TCTCTTCTCTGCAGAAAACACAAGGCAGAATGGAAGTAACTGACTCTGACAGATACAGCGACAATGATGA
AGACTCTAAAAATAGAGCTGAAGCTTGAAGAGGGAGCCGCTAAAGGGCAGAGCCAAGACGCCAGTCACA
CTGAAGCAGAGAAGGACTGAGCACAATCAGGTGGGAGAAAAACAGAGGAGCGAAGAGTAGACAGGGATA
TTCTTAAGGAAATGTTCCCTACGAAGCCTCCACTCCGACGGGAATCAGTGTAGCTGCCGACAGCAAT
CAAAGGTGCTGCAGGCCGCGCTCGAGCTCAGTACTCAGGATGGAAGAGTCGTTCTCATCTAAGTAC
GTCCCCAAGTATGCTCCCTTGGCAGATGTCAAGTCAGAAAAGACAAAAGAAGAGACGCTCCGTTCCCATGT
GGATAAAAATGTTGCTGTTTGCCTTGTGGCCGTGTTTTGTTTTGTTTATCAAGCTATGAAAACCAA
CCAAGGAAATCCCTTCACTAATTTCTTCAAGATACTAAAATATCCAAC

ACGCGTACGCGGCCGCTCGAG - GFP Tag - GTTTAA



[View online »](#)

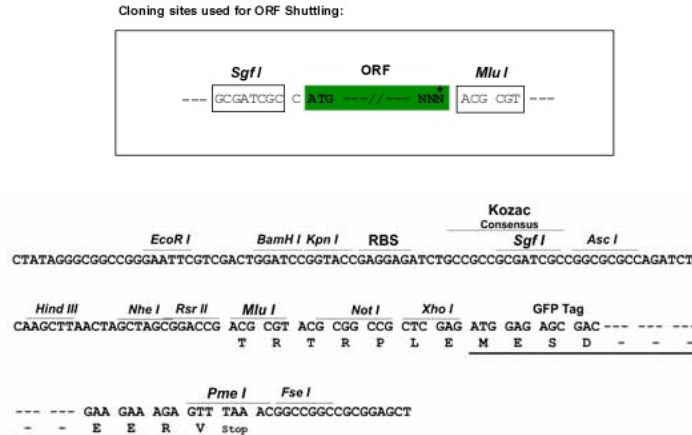
Protein Sequence: >MG227019 representing NM_001080132
 Red=Cloning site Green=Tags(s)

MPEFLEDPSVLTKDKLKSELVANNVTLPAGEQRKDVVYQLYLQHLTARNRPPLAAGANSKGPDPDFSSDEE
 REPTPVLGSGASVGRGRGAVGRKATKTKDKPRLEDKDDLDVTEL SNEELLDQLVRYGVNPGPIVGTTRKL
 YEKLLKLREQGTESRSSTPLPTVSSAENTRQNGSNDSDRYSDNDEDSKIELKLEKREPLKGRAKTPVT
 LKQRRTHEHNQVGEKTEERRVDRDILKEMFPYEASTPTGISASCRRPKGAAGRPLELSDFRMEESFSSKY
 VPKYAPLADVKSEKTKRRSVPMMWIKMLLFALVAVFLFLVYQAMETNQGPNFTNFLQDTKISN

TRTRPLE - GFP Tag - V

Restriction Sites: SgfI-MluI

Cloning Scheme:



ACCN: NM_001080132

ORF Size: 1029 bp

OTI Disclaimer: The molecular sequence of this clone aligns with the gene accession number as a point of reference only. However, individual transcript sequences of the same gene can differ through naturally occurring variations (e.g. polymorphisms), each with its own valid existence. This clone is substantially in agreement with the reference, but a complete review of all prevailing variants is recommended prior to use. [More info](#)

OTI Annotation: This clone was engineered to express the complete ORF with an expression tag. Expression varies depending on the nature of the gene.

Components: The ORF clone is ion-exchange column purified and shipped in a 2D barcoded Matrix tube containing 10ug of transfection-ready, dried plasmid DNA (reconstitute with 100 ul of water).

Reconstitution Method:

1. Centrifuge at 5,000xg for 5min.
2. Carefully open the tube and add 100ul of sterile water to dissolve the DNA.
3. Close the tube and incubate for 10 minutes at room temperature.
4. Briefly vortex the tube and then do a quick spin (less than 5000xg) to concentrate the liquid at the bottom.
5. Store the suspended plasmid at -20°C. The DNA is stable for at least one year from date of shipping when stored at -20°C.

RefSeq: [NM_001080132.2](#), [NP_001073601.1](#)

RefSeq Size: 3206 bp

RefSeq ORF: 1032 bp

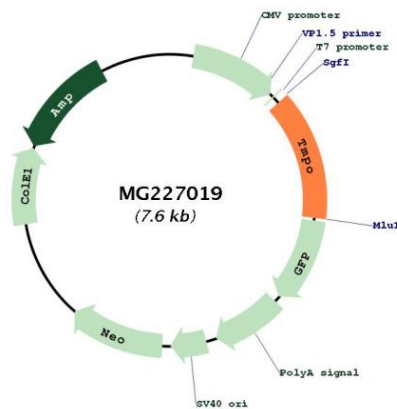
Locus ID: 21917

UniProt ID: [Q61029](#)

Cytogenetics: 10 45.66 cM

Gene Summary: May be involved in the structural organization of the nucleus and in the post-mitotic nuclear assembly. Plays an important role, together with LMNA, in the nuclear anchorage of RB1 (By similarity).[UniProtKB/Swiss-Prot Function]

Product images:



Circular map for MG227019