

## Product datasheet for **MG227013**

### Fzd6 (NM\_008056) Mouse Tagged ORF Clone

#### Product data:

Product Type:	Expression Plasmids
Product Name:	Fzd6 (NM_008056) Mouse Tagged ORF Clone
Tag:	TurboGFP
Symbol:	Fzd6
Synonyms:	Fz6
Mammalian Cell Selection:	Neomycin
Vector:	pCMV6-AC-GFP (PS100010)
E. coli Selection:	Ampicillin (100 ug/mL)



[View online »](#)

ORF Nucleotide  
Sequence:

>MG227013 representing NM\_008056  
Red=Cloning site Blue=ORF Green=Tags(s)

TTTTGTAATACGACTCACTATAGGGCGGCCGGAATTCGTCGACTGGATCCGGTACCGAGGAGATCTGCC  
GCCGCGATCGCC

ATGGAAGGTCCCGTTTCTGTTGGCGTGCATTCTTCTGCCCTCGTAAGAGGACACAGCCTTTTACCT  
GTGAGCCAATCACCGTCCAGATGTATGAAAATGACTTACAACATGACGTTCTCCCTAACCTGATGGG  
TCATTATGACCAGGGATCGCTGCTGTGAAAATGGGGCACTTTCTGCATCTTGCAATCTAGAATGTTCA  
CCAAACATTGAAATGTTCTTTGCCAAGCTTTTATACCACTGCACAGAGCAAATTCATGTAGTCTAC  
CCTGTCGAAAATGTGTGAGAAAATAGTTTCTGATTGCAAAAATAATGGACACTTTTGGCATCCGATG  
GCCTGAAGAACTGAATGTAACAGATTGCCACACTGTGATGACACTGTTCTGTAACCTTCTCATCCACAC  
ACAGAGCTTTCTGGCCACAGAAGAAATCAGATCAAGTCCAAGAGACATTGGATTTTGGTGTCAAAGC  
ACCTTAGGACTTCGGGGACCAAGGCTATAGGTTTCTGGGAATTGAACAGTGTGCCCTCCGTGCCCAA  
TATGTATTTTAAAAGTGAAGTGAAGTACACTTTGCCAAAAGTTTCATAGGAATAGTTTCAATATTTTGTCTT  
TGTGCAACTCTGTTACGTTCTTACATTTTAAATTGACGTTAGACGATTAGATACCCAGAGAGACCAA  
TTATCTATTACTCTGCTGCTACAGCATTGCTCTCTCATGTACTTCGTGGGGTTTTTGTGGGCAATAG  
CACGGCTTGAATAAGGCAGACGAGAAGCTGGAGCTCGGGGACACCGTTGTCTAGGGTCAAAGAATAAG  
GCTTGCAGTGTGGTATTTATGTTTCTGTATTTTTTACAATGGCTGGCACCCTGTGGTGGTGTATCTCA  
CCATTACGTGGTCTTAGCTGCCGGGAGAAAATGGAGTTGCGAAGCTATTGAACAAAAGCAGTGTGGT  
CCATGCCGTTGCCTGGGGGGCGCCGGTCTGACCGTCATGCTGCTCGCTATGAATAAGGTTGAAGGA  
GACAACATTAGCGCGTTTGTCTCGTTGGCCTGTATGACCTGGACGCCTCTCGCTACTTCGTCTCTGCG  
CTCTGTGCCTCTGCGTATTTGTTGGGCTGTCTCTCCTCTTAGCCGGCATCATCTCCTTGAATCATGTCCG  
ACAAGTCATACAGCATGATGGCCGGAACCAAGAGAAGCTAAAGAAATTCATGATTCCGATCGGAGTCTTC  
AGTGGCCTGTATCTTGTGCCCTTAGTGACACTTCTCGTTGCTATGTCTATGAGCTAGTGAACAGGATCA  
CCTGGGAGATGACATGGTCTCTGATCATTGTCAACAGTACCGCATCCCGTGCCCTTACCAGGCAAATCC  
AAAAGCTCGACCAGAATTGGCTTTATTTATGATAAAATATCTGATGACATTAATTGTTGGTATCTCTGCG  
GTCTTCTGGGTTGAAGCAAAAAGACGTGCACAGAATGGGCCGGGTTCTTTAAGCGAAAACCGCAAGCGAG  
ACCCCATCAGTGAGAGCCGCGAGTGTGCAAGAGTCTGTGAGTCTTCTCTGAAGCACAACCTCTAAAGT  
GAAGCACAAGAAGAAGCATGGCGCACCAAGGCCCATAGGCTGAAGGTCAATTTCCAAGTCCATGGGAACT  
AGCACAGGAGCGACCACAATCATGGCACCTCTGCCATGGCAATCGCTGACCATGATTACTTAGGCAAG  
AAACTTCAACAGAAGTCCACACCTCCCCAGAAGCATCCGTCAAAGAGGGACGAGCAGACCGAGCAAACAC  
TCCCAGCGCAAAGATCGGGACTGTGGGAACCTGCAGGGCCAGCTCCAAGCTCTCTGGGGACCGGAAT  
GGCAGGGAAAAGCCGAGCGGGCGGCTGAAGGAGAGAAGCAATGGATCAGAGGGGGCTCCAAGTGAAGGAA  
GGGTAAGTCCAAAGAGCAGCGTTCTGAGACTGGCCTGATAGACTGCAGCACTTCACAGGCCGCCAGTTC  
TCCAGAACCAACCAGCCTCAAGGGCTCCACATCTCTGCTGTTCACTCAGCTTCCAGAGCTAGGAAAAGAG  
CAGGGTGTGGCAGCCATTCCGACGCT

ACGCGTACGCGGCCGCTCGAG - GFP Tag - GTTTAA

Protein Sequence: >MG227013 representing NM\_008056  
 Red=Cloning site Green=Tags(s)

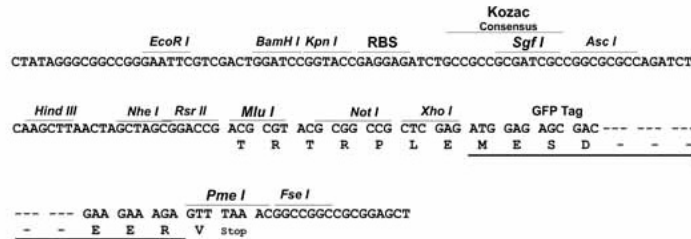
MERSPFLLACILLPLVRGHSFLTCEPITVPRCMKMTYNMTFFPNLMGHYDQGIAAVEMGHFLHLANLECS  
 PNIEMFLCQAFIPTCTEQIHVVLPCKRKLCEKIVSDCKLMDTFGIRWPEELECNRLPHCDDTVPVTSHPH  
 TELSGPQKKSDQVPRDIGFWCPKHLRTSGDQGYRFLGIEQCAPPNMYFKSDELDFAKSFIGIVSIFCL  
 CATLFTFLTFLIDVRRFRYPERPPIIYYSVCYSIVSLMYFVGFLLGNSTACNKADKLELGDTVVLGSKNK  
 ACSVVMFLYFFTMAGTVWWVILTITWFLAAGRKWSCEAIEQKAVWFHAVAAGAPGFLTVMLLAMNKVEG  
 DNISGVCFVGLYDLASRYFVLLPLCLCVFVGLSLLLAGIISLNHVRQVIQHDGRNQEKLKKFMIRIGVF  
 SGLYLVLVTLGCVVYELVNRITWEMTWFSDHCHQYRIPCPYQANPKARPELALFMIKYLMTLIVGISA  
 VFVWGSKKTCTEWAGFFKRNRKRDPISESRRVLQESCEFFLKHNSKVKKKKHGAPGPHRLKVISKSMGT  
 STGATTNHGTSAMAIADHDYLGQETSTEVHTSPEASVKEGRADRANTPSAKDRDCGEPAGPSSKLSGDRN  
 GRESRAGLKERSNGSEGAPSEGRVSPKSSVPETGLIDCSTSQAASSPEPTSLKGSTSLPVHSASRARKE  
 QGAGSHSDA

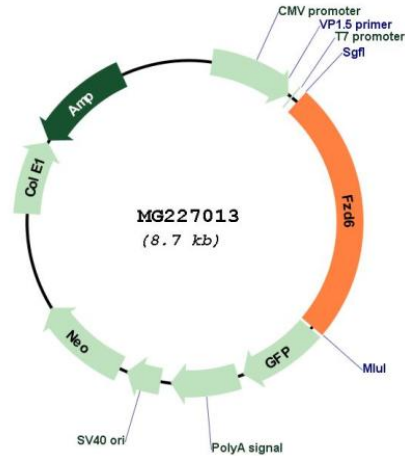
TRTRPLE - GFP Tag - V

Restriction Sites: SgfI-MluI

Cloning Scheme:

Cloning sites used for ORF Shutting:



**Plasmid Map:**


**ACCN:** NM\_008056

**ORF Size:** 2127 bp

**OTI Disclaimer:** The molecular sequence of this clone aligns with the gene accession number as a point of reference only. However, individual transcript sequences of the same gene can differ through naturally occurring variations (e.g. polymorphisms), each with its own valid existence. This clone is substantially in agreement with the reference, but a complete review of all prevailing variants is recommended prior to use. [More info](#)

**OTI Annotation:** This clone was engineered to express the complete ORF with an expression tag. Expression varies depending on the nature of the gene.

**Components:** The ORF clone is ion-exchange column purified and shipped in a 2D barcoded Matrix tube containing 10ug of transfection-ready, dried plasmid DNA (reconstitute with 100 ul of water).

**Reconstitution Method:**

1. Centrifuge at 5,000xg for 5min.
2. Carefully open the tube and add 100ul of sterile water to dissolve the DNA.
3. Close the tube and incubate for 10 minutes at room temperature.
4. Briefly vortex the tube and then do a quick spin (less than 5000xg) to concentrate the liquid at the bottom.
5. Store the suspended plasmid at -20°C. The DNA is stable for at least one year from date of shipping when stored at -20°C.

**RefSeq:** [NM\\_008056.2](#)

**RefSeq Size:** 4090 bp

**RefSeq ORF:** 2130 bp

Locus ID: 14368

UniProt ID: [Q61089](#)

Cytogenetics: 15 15.22 cM

**Gene Summary:** Receptor for Wnt proteins. Most of frizzled receptors are coupled to the beta-catenin canonical signaling pathway, which leads to the activation of disheveled proteins, inhibition of GSK-3 kinase, nuclear accumulation of beta-catenin and activation of Wnt target genes. A second signaling pathway involving PKC and calcium fluxes has been seen for some family members, but it is not yet clear if it represents a distinct pathway or if it can be integrated in the canonical pathway, as PKC seems to be required for Wnt-mediated inactivation of GSK-3 kinase. Both pathways seem to involve interactions with G-proteins. Activation by Wnt5A stimulates PKC activity via a G-protein-dependent mechanism. Involved in transduction and intercellular transmission of polarity information during tissue morphogenesis and/or in differentiated tissues (By similarity). Together with FZD3, is involved in the neural tube closure and plays a role in the regulation of the establishment of planar cell polarity (PCP), particularly in the orientation of asymmetric bundles of stereocilia on the apical faces of a subset of auditory and vestibular sensory cells located in the inner ear.[UniProtKB/Swiss-Prot Function]