

Product datasheet for **MG227006**

Mpl (NM_001122949) Mouse Tagged ORF Clone

Product data:

Product Type:	Expression Plasmids
Product Name:	Mpl (NM_001122949) Mouse Tagged ORF Clone
Tag:	TurboGFP
Symbol:	Mpl
Synonyms:	c-mpl; CD110; hlb219; TPO-R
Mammalian Cell Selection:	Neomycin
Vector:	pCMV6-AC-GFP (PS100010)
E. coli Selection:	Ampicillin (100 ug/mL)



[View online »](#)

ORF Nucleotide Sequence:

>MG227006 representing NM_001122949
 Red=Cloning site Blue=ORF Green=Tags(s)

TTTTGTAATACGACTCACTATAGGGCGGCCGGAATTCGTCGACTGGATCCGGTACCGAGGAGATCTGCC
 GCC**CGATCGCC**

ATGCCCTCTGGCCCTCTTCATGGTCACCTCCTGCCTCCTCTGGCCCTTCAAACAGGCACAAGTCA
 CCAGCCAAGATGTCTTCTTGGCTGGCCTTGGGCACAGACCCTGAACTGCTTCTCCCAAACATTTGAGGA
 CCTCACCTGCTTCTGGGATGAGGAAGAGGCAGCACCCAGTGGGACATACCAGCTGCTGTATGCCTACCGA
 GGAGAGAAGCCCCGTGCATGCCCTGTATTCCAGAGTGTGCCACCTTTGGAACCCGGTATGTGTGCC
 AGTTTCCAGCCCAGGATGAAGTGCCTCTTCTTCCGCTGCACCTCTGGGTGAAGAATGTGTCCCTCAA
 CCAGACTTTGATCCAGCGGGTGTGTTGTGGATAGTGTGGCCTGCCAGCTCCCCCAGGGTCACTAAG
 GCCAGGGTGGGAGCCAACCAGGGAACTTCAGATCCACTGGGAGGCCCTGCTCCTGAAATCAGTGACT
 TCCTGAGGCATGAACTCCGCTATGGCCCCACGGACTCCAGCAACGCCACTGCCCTCCGTCATTACGCT
 GCTCTCCACAGAACTGCTGCCCACTTTGTGGATGCCGAACCCAGTCCCTGTTCTTGACCAGCCTCCG
 TGTGTTTATCCGACAGCATCCCAACCGCATGGACCAAGTGGAGACCTCCCAAGTGGAGAAGCTCCATTT
 TGACAGTGAAGGGTGAAGCTGTCTCGTCTCAGGCCTCCAGGCTGGCAAATCCTACTGGCTCCAGCTACG
 CAGCCAACCCGACGGGTCTCCCTTCGTGGCTCCTGGGACCCTGGTCTTCCCTGTGACTGTGGATCTT
 CCAGGAGATGCAGTGACAATTGGACTTCAGTGCTTTACCTTGGATCTGAAGATGGTACCTGCCAGTGGC
 AGCAACAAGACCCGACTAGTCCCAAGGCTTCTCCGCCACAGCAGGACGAGGTGCTGCCCCACAGACAG
 GGACCCACCTGGGAGAAATGTGAAGAGGAGGAACCGCGTCCAGGATCACAGCCCGCTCTCGTCTCCCG
 TGCCACTTCAAGTACGAAATGACAGTGTATTACATCCTTGTAGAGGTGACCACAGCGCAAGGTGCCG
 TTCACAGTACCTGGGCTCCCCTTTTGGATCCACCAGGCTGTGCTCCTCCCACCCGAGCCTGCAGT
 GAGGGAGGTCTCAAGTGAAGGCTGGAGTTGGAGTGGCAGCACCACTCATCTTGGGCAGCTCAAGAGACC
 TGCTACCAGTCCGGTACACGGGAGAAGCCGTGAGGACTGGAAGGTGCTGGAGCCATCTCTCGGTGCC
 GGGGAGGGACCCTAGAGCTGCGCCCCGAGCTCGCTACAGCTTGCAGCTGCGTGCAGGCTCAACGGCCC
 CACCTACCAAGTCCCTGGAGCGCTGGTCTCCCCAGCTAGGGTGTCCACGGGCTCCGAGACTGCTTGG
 ATCACCTTGGTACTGCTCTGCTCCTGGTGTGAGCCTCAGTGCCTTCTGGCCTACTGCTGCTAAAGT
 GGCAATTTCTGCGCACTACAGGAGACTGAGGCATGCTTTGTGGCCCTCGCTTCCAGACCTACACGGGT
 CCTAGGCCAGTACCTCAGAGACTGCAGCCCTAAGTCTTCTAAGGCCACGGTTACCGATAGCTGTGAA
 GAAGTGAACCCAGCCTCCTGGAATCCTCCCTAAGTCTCAGAGACTCCTTACCTCTGTGTCCCT
 CCCAACCTCAGATGGACTACAGAGGACTGCAACCTTGCCTGCGGACCATGCCCTGTCTGTGTGCCACC
 CATGGCTGAGACGGGTCTGCTGCACCACACATTGCCAACCACTCCTACCTACCCTAAGCTATTGG
 CAGCAGCCC

ACGCGTACGCGGCCGCTCGAG - GFP Tag - GTTTAA

Protein Sequence:

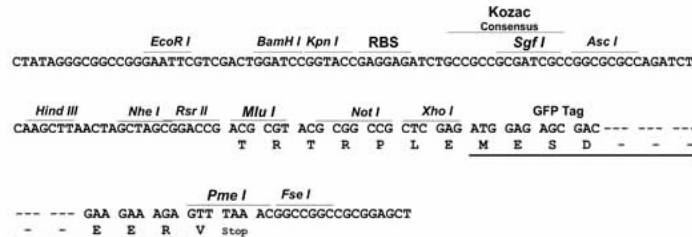
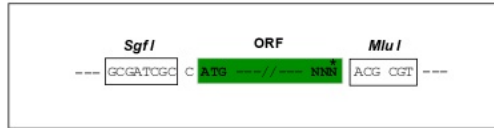
>MG227006 representing NM_001122949
 Red=Cloning site Green=Tags(s)

MPSWALFMVTSCLLLALPNQAQVTSQDVFLALGTEPLNCFSTQFEDLTCFWDDEEAAPSQTYQLLYAYR
 GEKPRACPLYSQSVPTFGTRYVCQFPAQDEVRLFPLHLWKNVSLNQLTIQRVLFVDSVGLPAPPRVIK
 ARGGSQPGLQIHWAPAPEISDFLRHELRYGPTDSSNATAPSVIQLLSTETCCPTLWMPNPVPLDQPP
 CVHPTASQPHGPVRTSPAGEAPFLTVKGGSLVSLQAGKSYWLQLRSQPDGVSRLRGSWGPWSFPVTVDL
 PGDAVTIGLQCFTLDLKMTVCQWQQDRTSSQGFRRHSRTRCCPTDRDPTWEKCEEEPRPGSQPALVSR
 CHFKSRNDSVHILVEVTTAQQGAVHSYLGSPFWIHQAVLLPTPSLHWREVSSGRLELEWQHQSAAQET
 CYQLRYTGEGRDVKVLEPSLGARGGTLELRPRARYSLQLRARLNGPTYQGPWSAWSPPARVSTGSETAW
 ITLVTALLVLSLALLGLLLKWFPAHYRRLRHALWPSLPDLHRVLGQYLRDAAALSPSKATVTDSC
 EVEPSLLEILPKSSESTPLPLCPSQPQMDYRGLQPCLRMPLSVCPPMAETGSCCTTHIANHSYLP
 QP

TRTRPLE - GFP Tag - V

Chromatograms: https://cdn.origene.com/chromatograms/ja2796_e02.zip
Restriction Sites: SgfI-MluI
Cloning Scheme:

Cloning sites used for ORF Shutting:



ACCN: NM_001122949

ORF Size: 1899 bp

OTI Disclaimer: The molecular sequence of this clone aligns with the gene accession number as a point of reference only. However, individual transcript sequences of the same gene can differ through naturally occurring variations (e.g. polymorphisms), each with its own valid existence. This clone is substantially in agreement with the reference, but a complete review of all prevailing variants is recommended prior to use. [More info](#)

OTI Annotation: This clone was engineered to express the complete ORF with an expression tag. Expression varies depending on the nature of the gene.

Components: The ORF clone is ion-exchange column purified and shipped in a 2D barcoded Matrix tube containing 10ug of transfection-ready, dried plasmid DNA (reconstitute with 100 ul of water).

Reconstitution Method:

1. Centrifuge at 5,000xg for 5min.
2. Carefully open the tube and add 100ul of sterile water to dissolve the DNA.
3. Close the tube and incubate for 10 minutes at room temperature.
4. Briefly vortex the tube and then do a quick spin (less than 5000xg) to concentrate the liquid at the bottom.
5. Store the suspended plasmid at -20°C. The DNA is stable for at least one year from date of shipping when stored at -20°C.

RefSeq: [NM_001122949.2](#), [NP_001116421.1](#)

RefSeq Size: 2958 bp

RefSeq ORF: 1902 bp

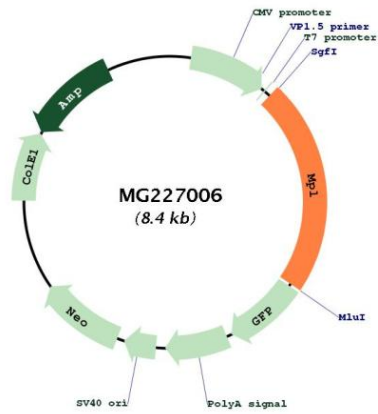
Locus ID: 17480

UniProt ID: [Q08351](#)

Cytogenetics: 4 54.61 cM

Gene Summary: Receptor for thrombopoietin that acts as a primary regulator of megakaryopoiesis and platelet production. May represent a regulatory molecule specific for TPO-R-dependent immune responses.[UniProtKB/Swiss-Prot Function]

Product images:



Circular map for MG227006