

Product datasheet for **MG226995**

Phlpp1 (NM_133821) Mouse Tagged ORF Clone

Product data:

Product Type: Expression Plasmids
Product Name: Phlpp1 (NM_133821) Mouse Tagged ORF Clone
Tag: TurboGFP
Symbol: Phlpp1
Synonyms: AI836256; mKIAA0606; Phlpp; Plekhe1; SCOP
Mammalian Cell Selection: Neomycin
Vector: pCMV6-AC-GFP (PS100010)
E. coli Selection: Ampicillin (100 ug/mL)
ORF Nucleotide Sequence: >MG226995 representing NM_133821
 Red=Cloning site Blue=ORF Green=Tags(s)

TTTTGTAATACGACTCACTATAGGGCGGCCGGAATTCGTCGACTGGATCCGGTACCGAGGAGATCTGCC
 GCC**CGATCGCC**

ATGGAGCCCGCCGCTGCAGCCCCGGCACAGCGACTCGCGGACCCACGGGTGAGGACCAAGCCCTGGCGG
 CGGCGGCGGCCGAGGGCGGCCGGTGTCCGGATCCCGCGCTGAGCGCGGCCGCCCGAGCGGCGGAAACGG
 CGGCGCGCGCGAGAGGAGGCCCTCGAGGCGCGCGGGGCCGCTGCCGCGCCGCGCGGAGGCACC
 GGGCGCAGGCGGGCGGGGAGCTCCCCAGCCCGCGCCGGTGGGGCCGCTCCGGTCCCGCGGCCGGCG
 GCGGCGCAACTCGTGTGCTGAAGAGAGGGCGGCTGAAGAGGAATCTGTCCGCGCCGCCCGCCGCTC
 GTCGTCTCGTCGCCGCTCCTCGGCGTCTTCGGCCGCTGGCGGCCCTCCCGCGCTCCTGCTCGGCTCGGG
 TCCTGTGCACCCGAGCCTGGACAGGAAGACGCTGCTCCTGAAGCACCGGCAGCTGCTTCACTGCAGC
 CGTCGGACAGGACTGGGTGAGGCACCACTCCAGCGGGCTGTGTGCACGTCTTTGACCGCCACATGGC
 CTCGTCTACCTGCGCCAGTGTCTGCACGCTGGACACCACGGCCGCCGAGGTGGCGGCCCGGCTTCTG
 CAGCTGGGCCACAAGGGCGGGGGTGGTGAAGGTGCTGGGCTACGGGCCGCTCCCGCGCCGCCCTG
 CCGCCAGCGATCAGACCTGGACGGAGACACGGAAGGACGTTGGAGCCACCGCCCTCGAGCGGCACTGT
 TGGTGTGTCCGGGGCCCTGCGCGCGCCCTCCCGCCGATCTGCCGCTGCCGGGGGCGCCTGGACGCG
 TGTGCACCCCGCATCAGCCCCGCGCTTCGGACTCCAGCCCCGAGAGCTGTTCCGGGGCGGCCCGGG
 CCCTCCCGCGCCCGCGCCCGCCTCTGACACCGAGAGCTTACGCTGAGCCCGAGCCGAGAGCGT
 GTCAGACCGGCTGGACCCCTACAGCAGCGCGGGCGGCGGCTCCTCGTCTGTCGAGGAGTTAGAGGCT
 GATCCGGCATGCCCCACCGCCCGGCCCGCCCGCGCAGCCTCGGCCGCTTCCCGAAGACCTCGGCTT
 TACTGCAGCCGAAAGCCCGACGGGCGTAGACAGCACTGGCGTATAGCGGGCGAGGGTCCCGGAGACGA
 TAAGGCGATGGCAGCCGAGCTCCGACGTTCTCTGTGACTTCGGGGAGGATACGGGAGACCGTGCAA
 AAGACATCTCCGCCCTCCTGTATGTACAGCTCCATGGAGAGACTACCGCGCCTGGAGGCGGACGAGA
 AGCCATTGCAGATCCAAAATGACTACCTCTTCAACTGGGATTTGGGGAGCTGTGGAGGGTGCAGGAGGA
 AGGCATGGACTCAGAGATTGGTGTCTCATTGATTCTATGCAGGAAAGCCTCATAGCACTGGGAGCTCT



[View online »](#)

GAGCGGATTCAGCTCTCCGGAATGTACAATGTCCGAAAAGGCCAAAATGCAGTTGCCAGTGAACCGATGGA
 CAAGACGACAGGTCATTCTGTGCGGGACGTGCTTGATAGTGTCTGCGTAAAGACAGCGTGAGTGGGAA
 GATGCATGTCCTGCCCTCATTGGTGGAAAAGTGGAGGAAGTAAAAAGCACCAGCACTGTTTAGCGTTC
 AGCTCTTCGGGGCCTCAAAGCCAGACTTACTACATCTGCTTTGATACTTTACGGAGTACTTACGGTGGC
 TGCGGCAAGTCTCAAGGTTGCATCACAGCGTATAAGCTCAGTAGACCTCCTGTTGTAGCCTGAACA
 TCTGCTGCCAACCTCTTTACAGCCAAGACCTTACTCATCTCACTTAAAAACAGAACTCTCTAAGGCAA
 ACCCCACCCTCCAGCTGCCAGAGGACTTGGTGAAGTGCAGAAAGTTCACCAAATGAAGAGCCTTAACC
 TTTCCAATAACCCACTAGGAGCCTTCCGTGACGAGTCTGCAGCATTCCAACCCTAGCAGAGCTGAATGT
 ATCTTGCAATGCCTGCGAGAAGTCCCAGCAGCTGTTGGAGATATGCAGAACTTGCAGACGTTTCTGCTG
 GATGGAATTTTCTCCAGTCCCTTCTGCTGAACTGGAGAGCATGCACCAGCTCAGCTATCTGGGTCTTT
 CCTTTAATGAATTCAGTACATTCCAGAGGATTGGAGAAGCTGACTGCTGTGGATAAGCTGTGTATGGC
 TGGAACTGTGTGGAGACCCTCAGACTACAGGCCTTAAGAAGAATGCCTCATATTAACATGTGGACCTA
 AGACTGAACATACTCAGAAAGCTTATGGCAGATGAGGTGGACTTTGTGCAACATGCACTCAGCTTGACC
 TGCGAGACAATAAGCTTGGTGATCTAGATGCTATGATCTTCAACAACATAGAAGTCTGCACTGTGAGAG
 GAATCAGCTGGTGACATTGAACGTTTGTGGCTATTTCTAAAGGCACTCTATGCTTCTTAAATGAACCT
 GCTCAACTTGATGCTACCCAGTTCGAATTATCTCTTACATGGATGTCTCAAGAACTGCCTAGAAA
 GTGTGCCTGAGTGGGTATGTGAAAGCCGAAAATTAGAAGTTTTGGATATTGGCCATAATCAAATATGTGA
 ACTTCTGCCCGCTGTTTTGTAATAGTAGTCTCCGAAAATTGCTAGCAGGACACAACCGGTTGGCAAGG
 CTTCTGAAAGGCTGGAGAGAATCTGTGGAGGCTTGGATGTCAGCACAACCAGATCACTGAGCTCC
 CACCAAACCTCCTCATGAAGGCTGACAGCCTGAGATTCTGAATGCATCTGCAACAACTGAAACCTC
 GCCTCCAGCCACACTTTCTGAGGAGACGAGCAGTATATTACAGGAGTGTACCTGACAAACAACTGCCTC
 ACGGATAAGTGTGTGCCCTTGTAAACAGGGCACCCCGTCTGAAGATCTACACATGGCCTATGAACCGGC
 TTCAGAGCTTCCCGCAAGTAAAAATGGAAAATGGAGAACTTGAAGAAATTGATATCATGGGAATAA
 GCTGAAAGCCATCCCCACAACAATCATGAACTGCAGACGATGCACACCGTGATTGCTCACTCCAATTGT
 ATCGAAGTCTTCTGAAGTTATGCAGCTCCCAGAAGTCAAGTGTGTAGATCTGAGCTGTATGAGCTGA
 GTGAAATCACGTTACCAGAAAACCTGCCACCTAAGCTGCAGGAGCTAGACCTGACTGAAATCCACGCT
 TGCCCTGGACCACAAAAGCCTGGAGCTGCTCAATAACATTCGCTGCTTCAAGATTGACCAGCCGTGACGA
 GGAGATGCATCAGGAGCCCCAGCAGTATGGAGTCAATGTTACTGAAGCATCGGGAGTAAAAACAAGC
 TGTGTGTCGACGCCCTGTCTGTAATAACTTCCGTGACAACCGAGAGGCCCTCTATGGTGTGTTGATGG
 AGACCGGAATGTGGAGGTGCCCTACCTTCTCCAGTGCACCATGAGTGACATTTTGGCTGAAGAGCTTCA
 AAAACGAAAAATGAAGAAGAATACATGGTCAATACATTATAGTCATGCAAAGGAACTGGGAAGTCTG
 GGCAGAACTTGGTGGTGTCTGCTGCTGCTGCCACATCAAGCCTGACCCTGTGGACTGGGAGGATCCTT
 TACCCTGACCTCTGCTAATGTTGGCAAGTGCAAAACGGTCTCTGTGAAATGGGAAGCCACTGTCTCTG
 TCCAGGTCATACATCATGAGCTGTGAAGAAGAGCGGAAGAGGATTAAGCAGCACAAAGCCATCATCACTG
 AGGATGGCAAGGTCAATGGAGTGACAGAGTCCACGCGCATCCTGGGCTACACCTTCTCCATCCCAGTGT
 GGTGCCTCGCCCCATGTGCAGTCGGTCTTCTGACTCCACAGGATGAGTTTTTCATCCTGGGCAGCAAA
 GGGCTGTGGGACAGCCTATCCATTGACGAGGCTGTGGAAGCTGTACGCAATGTGCCAGATGCTCTGGCTG
 CTGTAAGAAGCTTGCACCCCTGGCTCAGAGCTATGGCTGCCATGACAGCATCAGTGTGTGGTGTACA
 GCTAAGTGTACCGAAGACAGCTTCTGCTGCTGTGAGCTCAGTGTGGAGGAGCATGCCACCACCAGC
 CCCGGAATCTTCCACCATCCGTCAACATGGTCAATCAAGGACCGACCCTCAGATGGGCTGGGTGTGCCAT
 CCTCCAGCAGTGGCATGGCATCTGAGATCAGCAGTGAAGTGTCTACCTCCGAGATGAGTAGTGAGGTGGG
 CTCCACAGCCTCTGATGAGCCCCGTCTGGAGTCTGAATGAGAGCAGCCCTGCCTACCCCAACGAGCAG
 CGCTGCATGCTCCACCCTGTCTGCCTGTCTAACTCCTTCAACGTGAGTGTCCAGCGCTACTTTCTCCA
 GCGCGTTCTCTGACAACGGCCTTGCAGTGACGATGAAGAACCATTGAGGGGTGTTTCAGCAACGGCAG
 CCGGGTTGAGGTGGAAGTAGACATCCACTGCAGCAGGGCCAAGGAAAAGGAGAGACAGCAGCACCTACTT
 CAGGTGCCAGCTGAGGCCAGTGTGAGGGCATTGTATCAGTGCATGAGGATGAGTCAAGTCTGTCCA
 AGAAGGCAGACTTTTCTGCTGTGGAAACCATTGGACGACGAGGGCTAATGGCTCTGTAGCTCCCAGGA
 AAGGAGCCATAATGTGATAGAGGTTGCTGCAGATGCGCCTCTCCGGAAGCCAGGAGGCTATTTTGCAGCC
 CCTGCTCAGCCAGATCCAGATGATCAGTTTATCATCCCCCAGAGCTGGAAGAGGAAGTCAAGAAATCA
 TGAAACATCACCAGGAGCAGCAGCAGCAGCAGCAGCAGCAGCAGCAGCAGCAGCAGCAGCAGCAGCAGC
 GCCACAGCCACAGCCACAGCCACAGCCACAGCCACAGCCACAGCCACAGCCGCGCACTTCCAATGGATCACCTGCCA
 GACTGTTACGATACACCGCTA

ACGCGTACGCGGCCGCTCGAG - GFP Tag - GTTTAA

Protein Sequence:

>MG226995 representing NM_133821
 Red=Cloning site Green=Tags(s)

MEPAAAAPAQRLADPTGEDQALAAAAAEGRCPPALSAAAPSGNGGAAREEAPCEAPPGPLPGRAGGT
 GRRRRRGAQPAAAGGAAPVPAAGGGANSLLLKRGRLKRNLAAAAASSSSPSSASSAAGGLPASCASAS
 SLCTRSLDRKTLKKHRQLLQLQPSDRDWRHQLQRGCVHVFDHRMASSYLRPVLCITLDTTAAEVAARLL
 QLGHKGGGVVVKVLYGPPPAAPASDQTLDEHGRDVEPPSSGTGAVRGPAPADLPLPGGAWTR
 CAPRISPAPSDSSPGELFAGGPGSPRAPRPADETFSLSPSAESVSDRLDPYSSGGGGSSSSSELEA
 DPAMPHRPGRPAQPPSPKTSALLQPKAPTGV DSTGVIAGEGPGDDKAMAAAAPDVPLSTSGRIRET VQ
 KTSPPSLVYQLHGGETTRLEADEKPLQIQNDYLFQLGFGELWRVQEEGMDSEIGCLIRFYAGKPHSTGSS
 ERIQLSGMYNVRKGMQLPVNRWTRRQVILCGTCLIVSSVKDSVSGMKMHVLP LIGGKVEEVKKHQCLAF
 SSSGPGSQTYIICFDTFTEYLRWLRQVSKVASQRISSVDLSCCSLEHLPANLFYSQDLTHLNLKQNF LRQ
 TPTLPAARGLGELQRF TKLKSLNLSNNHLGAFPSAVCSIPTLAELNVSCNALREVPAAVGDMQNLQTFLL
 DGNFLQSLPAELESMLQSYLGLSFNEFTDIPEVLEKLTAVDKLCMAGNCVETLRLQALRRMPHIKHVDL
 RLNILRKLMADEVDFVQHVTQLDLRDNKLGDLDA MIFNNIEVLHCERNQLVTLNVCGYFLKALYASSNEL
 AQLDVYPVNYLSYMDVSRNCLESVPEWVCE SRKLEVL DIGHNQICE LPARLFCNSSLRKLLAGHNRLAR
 LPERLERTSVEVLDVQHNQITELPPNLLMKADSLRFLNASANKLETLPATLSEETSSILQELYL TNNCL
 TDKCVPLLTGHPRLKILHMAYNRLQSFPA SKMAKLEEELEEDISGNKKAIP TTTIMNCRMHMTVIAHSNC
 IEVFPVEMQLPEVKCVDLSCNELSEITLPENLPPKLQELDLTGNPRLALDHKSLELLNINRCFKIDQPSA
 GDASGAPAVWSHGYTEASGVKNKLCVAALSVNNFRDNREALYGVFDGDRNVEVPYLLQCTMSDILAEELQ
 KTKNEEYMVNTFIVMQRKLGTAGQKLGAAVLC HIKPDPVDLGGSF TLT SANVGKCTVLCRNGKPLSL
 SRSYIMSCEEERKRIKQHKAIITEDGKVNVT ESTRILGYTFLHPSVVRPHVQSVLLTPQDEFFILGSK
 GLWDSLIDEAVEAVRNVPDALAAAKLCTLAQSYGCHDSISAVVVQLSVTEDSFCCCEL SAGGSMPPPS
 PGIFPPSVNMVIKDRPSDGLGVPSSSSGMASEISSELSTSEMSSEVGSTASDEPPSGVLNESSPAYPNEQ
 RCMLHPVCLSNFQRQLSSATFSSAFSDNGLSDDEEPIEGVFSNGSRVEVEVDIHCSRAKERKERQQHLL
 QVPAEASDEGIVISANEDESGLSKKADFSAVGTIGRRRANGSVAPQERSHNVIEVAADAPLRKPGGYFAA
 PAQDPDQDFIIPPELEEEVKEIMKHHQEQQQQQQQLPPPPQPQPQPQPQPQPQRHFQMDHLP
 DCYDTPL

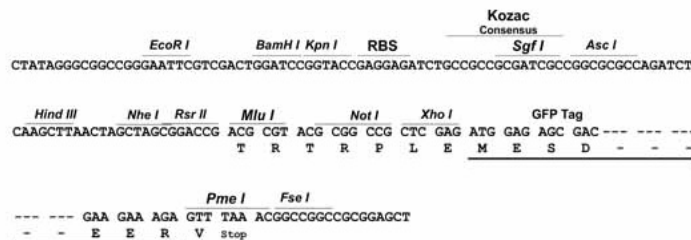
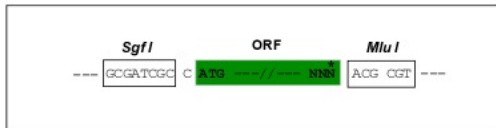
TRTRPLE - GFP Tag - V

Restriction Sites:

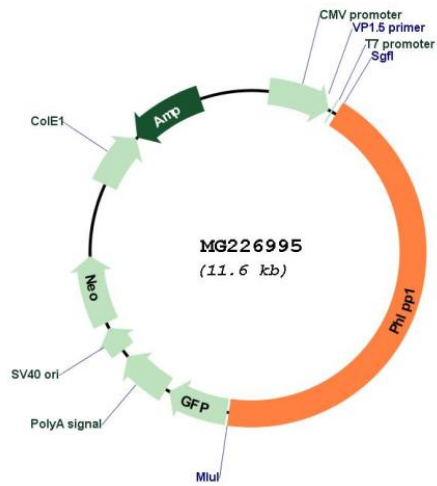
Sgfl-MluI

Cloning Scheme:

Cloning sites used for ORF Shuttling:



Plasmid Map:



ACCN: NM_133821
 ORF Size: 5061 bp

OTI Disclaimer: Due to the inherent nature of this plasmid, standard methods to replicate additional amounts of DNA in E. coli are highly likely to result in mutations and/or rearrangements. Therefore, OriGene does not guarantee the capability to replicate this plasmid DNA. Additional amounts of DNA can be purchased from OriGene with batch-specific, full-sequence verification at a reduced cost. Please contact our customer care team at custsupport@origene.com or by calling 301.340.3188 option 3 for pricing and delivery.

The molecular sequence of this clone aligns with the gene accession number as a point of reference only. However, individual transcript sequences of the same gene can differ through naturally occurring variations (e.g. polymorphisms), each with its own valid existence. This clone is substantially in agreement with the reference, but a complete review of all prevailing variants is recommended prior to use. [More info](#)

OTI Annotation: This clone was engineered to express the complete ORF with an expression tag. Expression varies depending on the nature of the gene.

Components: The ORF clone is ion-exchange column purified and shipped in a 2D barcoded Matrix tube containing 10ug of transfection-ready, dried plasmid DNA (reconstitute with 100 ul of water).

Reconstitution Method:

1. Centrifuge at 5,000xg for 5min.
2. Carefully open the tube and add 100ul of sterile water to dissolve the DNA.
3. Close the tube and incubate for 10 minutes at room temperature.
4. Briefly vortex the tube and then do a quick spin (less than 5000xg) to concentrate the liquid at the bottom.
5. Store the suspended plasmid at -20°C. The DNA is stable for at least one year from date of shipping when stored at -20°C.

RefSeq: [NM_133821.3](#), [NP_598582.3](#)

RefSeq Size: 6123 bp

RefSeq ORF: 5064 bp

Locus ID: 98432

UniProt ID: [Q8CHE4](#)

Cytogenetics: 1 E2.1

Gene Summary:

Protein phosphatase involved in regulation of Akt and PKC signaling. Mediates dephosphorylation in the C-terminal domain hydrophobic motif of members of the AGC Ser/Thr protein kinase family; specifically acts on 'Ser-473' of AKT2 and AKT3, 'Ser-660' of PRKCB and 'Ser-657' of PRKCA (By similarity). Isoform 2 seems to have a major role in regulating Akt signaling in hippocampal neurons (By similarity). Akt regulates the balance between cell survival and apoptosis through a cascade that primarily alters the function of transcription factors that regulate pro- and antiapoptotic genes. Dephosphorylation of 'Ser-473' of Akt triggers apoptosis and suppression of tumor growth. Dephosphorylation of PRKCA and PRKCB leads to their destabilization and degradation. Dephosphorylates STK4 on 'Thr-387' leading to STK4 activation and apoptosis. Dephosphorylates RPS6KB1 and is involved in regulation of cap-dependent translation. Inhibits cancer cell proliferation and may act as a tumor suppressor. Dephosphorylates RAF1 inhibiting its kinase activity. May act as a negative regulator of K-Ras signaling in membrane rafts (By similarity). Involved in the hippocampus-dependent long-term memory formation (PubMed:17382888). Involved in circadian control by regulating the consolidation of circadian periodicity after resetting (PubMed:20080691). Involved in development and function of regulatory T-cells (PubMed:21498666). [UniProtKB/Swiss-Prot Function]