

## Product datasheet for **MG226945**

### Camta1 (NM\_001081557) Mouse Tagged ORF Clone

#### Product data:

Product Type:	Expression Plasmids
Product Name:	Camta1 (NM_001081557) Mouse Tagged ORF Clone
Tag:	TurboGFP
Symbol:	Camta1
Synonyms:	1810059M14Rik; 2310058O09Rik; AI316882; AW987475; mKIAA0833
Mammalian Cell Selection:	Neomycin
Vector:	pCMV6-AC-GFP (PS100010)
E. coli Selection:	Ampicillin (100 ug/mL)
ORF Nucleotide Sequence:	>MG226945 representing NM_001081557 Red=Cloning site Blue=ORF Green=Tags(s)

TTTTGTAATACGACTCACTATAGGGCGGCCGGAATTCGTCGACTGGATCCGGTACCGAGGAGATCTGCC  
GCC**CGATCGCC**

ATGTGGCGCGGGAGGGGAAATGGCTGCCGAAAACAAGCCGGAAGAGCGTTTCCCAAAGTGTATTCTGCG  
GAACTAGCACCTACTGTGTTCTCAACACCGTGCCACCTATAGAAGATGATCATGGGAACAGCAATAGTAG  
TCATGTAAAAATCTTTTACCGAAAAGCTGCTTGAATGTCTGCCGAAATGTTCAAGTTTACCCAAAGAG  
AGGCCCGCTGGAACACTAATGAGGAAATGCGGCTTATTTAATAACATTTGAGAAACACGAAGAATGCG  
TAACCACATCCCCTAAGACAAGACCGCAGAATGGCTCCATGATACTCTACAACAGGAAGAAAGTGAAGTA  
CAGGAAAGACGGGTACTGCTGGAAGAAGAGGAAAGATGGGAAAACGACCAGAGAGGACCACATGAAGCTC  
AAAGTCCAGGGAGTTGAGTGCTTGTACGGCTGCTATGTCCATTCCCTCATACCTACTTTCCACCGGA  
GGTGCTACTGGCTCCTTCAGAACCCCGACATCGTCTGCTGCACTACCTGAATGTGCCGGCCATTGAGGA  
CTGCGGCAAGCCCTGTGGGCCCATCCTCTGCTCCATCAACACCGACAAGAAGGAGTGGGCTAAGTGGACG  
AAGGAGGAACTCATCGGGCAGCTGAAGCCCATGTTCCATGGTATCAAATGGACCTGCAGCAATGGAACA  
GCAGCTCAGGCTTCTCCGTGGAGCAGCTGGTGAACAGATCCTCGACAGCCACCAGCAAGCCCGACCC  
CCGGACCCACAACCTGCCTCTGCACCGGCAGCCTGGGAGCGGGCAGCAGCGTGCATCATAAGTGAATAGT  
GCCAAACACCGCATCATCTACCAAAGGTGGAGCCGCGGGGCTATGGGGCCACTCGGAAGTAC  
AACACAACGACGTGTAGAGGGCAAGCATGAACCCAGCCACGGCAGGAGCACGAGCCGGGAGAAGAGGAA  
TGGCAAGTGGCCAAGCCGGCACTGCTGCACCAGAACAGCACGGAGGTTTCTCCACCAACCAGGTGGAG  
GTCCCGACACTACCCAGAGCTCCCCGTGCCATCAGCAGCGGGCTCAACAGTGACCCAGACATGGTAG  
ACAGCCCGGTTGTACAGGTGTGTCCAGCATGGCAGTGGCCTCTGTGATGGGGGACTGTCCCAAAGTGC  
CACAGTGTATGTCGAGGTCACTAACAGGCGGTGTACACCATGTCCCCACCCTGGTCCCAACCAC  
CACCTCCTCTCGCCGATGCCTCTCAGGCGCTTGTACTGGCTGTAAGTTCTGACGGCCACAAGTTTGCCT  
TCCCCACCAGGGCAGCTCAGACAGCCTGTCCATGCTGCCGCAATGTGTCCGAAGAGCTGGTCTCTC  
CACCACCTCGAGGTGGCCGGAAGATTCCAGAGACCGCCATGAACCTCGACCCGACTGTTTCTCAAT



[View online »](#)

AATCCAAAGCAGGGCCAGACATACGGGGTGGGGCCTGAAAGCTGAGATGGTTAGCACCAATATCCGGC  
 ACTCGCCGCTGCAGAGAGGAGCTTTGGCTTACCAGCGTCTCACCAAGGAGATCAAGACCGAAGACAC  
 CTCCTTTGAGCAGCAGATGGCCAAAGAGGGCCCTACTCTCTCGGCGGCAGCTGCCGCGTCCAGCTCC  
 CTCACACTGACCGCGGGGATCTAGCTCCTGCCGTGGGGCGTGGCTGAGTCCCAGCACCACCTCG  
 AGCAGATGGACTTCAGTGCCATAGACTTAACAAGGACTACGCGTCCAGCTTACGCCAGACGGGCCAG  
 CCCCCATATCCACCAAACCCCTCCCCAGCTTCTTCTGCAGGATGCCAGCAAGCCCTCCCCTTGAG  
 CAGAATACCCACAGCAGCCTAAGCGAGTACGGGGCCGCTTTGTGATGCCACGGTGAACCGAGGCCCT  
 CGTCCCAAACAGCTCTTGCAGCGCCACGTGGAAACCCGGATAGAGTCTACTTCTCTTGCACCTCAT  
 GCAGTTCCAGGCCAATTCCAAGCCATGGCGGCAAGGGGAGGTTACCATGGAGACCTCACAGGCAGT  
 GAAGGGAATGAGGTCTCTCAAGTCTGGGGAGCTGCAGGCCTGTGGCTCTGAGCACTACCTGCAGCCAG  
 AGACCAATGGGGTATCCGCAGCGCAGGTGGCGTCCCCCTTCTCCGAGCAATGTGGTGCAGGGACTCTA  
 CCCGGTGGCCAGCCAGCTGGCAACAGCTTAACATGGAGCTCAGCTGGACCCTTTGACATTTCC  
 TTCAGCAATCAGTTCTCAGACCTGATCAATGACTTCATCTCTGTGGAGGGGGCAGTGGTACGATCTACG  
 GGCACCAGCTGGTGTGGGGGACAGCGTGCACCTCACAGTCCGAAGATGGGGCGGGCACCCCTCAC  
 CCAGGCGGAGATGTGATTCCCTGCTGCAGCCCCAACAGGGCAGCTGCAGCTGAGCAGCGCTGAGGGC  
 GGGCCCAGCACCATGGCCATACATGCATGTTGCAGAGGTGGTCTCGGCCGCTCGGCCAGGGCGCCCTGG  
 GCATGCTGCAGCAGAGCGGACGGGTGTTTATGGTACTGACTATTCCCCAGAGTGGTCTTACCCAGAGGG  
 AGGAGTGAAGTTCTCATCACAGGCCATGGCAAGAAGCCAGCAATAATTACAGTTGCCTGTTTGACCAG  
 ATCTCCGTGCCTGCATCCCTGATTCAGCCTGGGGTGTGGCTGTACTGCCAGCCACGACACGGGTCT  
 TTGTGACCCTGCAAGTTGCCTTCAACAATCAGATCATCTTAATTCGGTGGTGTGGAGTACAAGGCTCG  
 GGCCTGCCACACTCCCTTCTCCAGCAGACTGGCTGTACTGGACGATAACCAGTTCAGGATGTCC  
 ATCCTGGAGCGTCTGGAGCAGATGGAAAGGAGGATGGCCGAGATGACCGGCTCCCAGCACAAGCAGG  
 CGAGCGCGGAGCGGCAGCGGAGCGGCAGCGGAGTGGTCCCGGAGGGGGCCAGGCCCATGTGCTCC  
 GGGCGCTGGGACCTGGGAGCTGCTTCGAGAGCGTGTGGTGTGCGTGTGAGAAGATGATGAGCCGG  
 GCCTGCTGGGCCAAGTCCAAGCATCTGATCCATTGCAAGACCTCCGCGGGATGACCCTTTACACCTGG  
 CTGCTGCCAGGGCTACGCCACCCTGATCCAGACCCTCATCAAATGGCGCACAAGCATGCAGACAGCAT  
 TGATTTGGAAGTGGAGTTGATCCCTGAATGTGGACCACTTCTCTGTACTCTCTGATGTGGCCTGT  
 GCCCTGGGGCACTTGAAGCGGTGTGGTGTCTACAAGTGGGACCGCGGGCCATCTCCATCCCCGACT  
 CTCTGGGACGGCTGCCTTTGGGAATTGCCAGTTCGAGGGCCACGTGAAGTACAGAGTGTCTGGAACA  
 CCTGCAGAGAGATGAGCAGGCCAGTTGGGACAGGCTCCCGGATCCACTGTGCCCAAGCGAAGAGCCA  
 ACCACAGACAGCTGGATGGCCAGTGGCAGAGGGAGGCCATGAGCCCTCCAGAAATACCCAAAGGAGTCA  
 CTGTATTGCGAGCACCAATCCAGAGCTGAGAAGACCTCGGTCTGAACCTCTAATTAACACAGCACTGA  
 GGGCCACAAGATTATCCGGCTCCAAAAAGCATAAAATTGAACCCCGAGTCTTCCAGGCAAGGCAGGAG  
 AAGCTGCTCTGCACTGCACTGAGTCTGGAGCAGCCAAATATCAGGAAGCAGAGCCCTAGGTCTAAGCAGC  
 TTCCCCCGAGACAATCAGCCCCAGTGAAGGAGTGAAGGAGTACAGCCGGGAAGCCGCCCTCCACTCC  
 AGAGACTGCAGCATCCCAAGCGTCTGCATCTCAGCCTGTAGTAAAGTGGAGTGCCAAAGATCTTTACATT  
 GGTGTGTCTACAGTACAGGTGACTGAAATCCGAAGGGGACCAGTGTAGTAAAGGACCGGGCCCTTCC  
 AGGTGCGCCCGAGGGAACCAATGAGCGTCTGATGTTGGCTAACAGAGAGTGGTGAATACAGAGATGG  
 GCCTACCGGGATAGGACAGAGCAGAGGATTGCCCCAGCCCATGGATGATATTCAGGTGAACATGATG  
 ACCTTGGCGGAGCACATTATCGAGGCCACACCAGACCAATCAAGCAGGAGAACCTTTGTGCCATGGAAT  
 CCTCAGCCTTGGAAAGAAGATCCAGCCACCATTAGCAGTACGATGAGCTGGCTGGCCAGTTACCTAGC  
 CGATGCTGACCGTCTGCCAGTGTGCCACATCAGGAGTGCCTGACTGAGCCCTGACGCCGTCTTCT  
 AATGCCAGCTTGAAGTCCCGCAGGCTCTCCAGTCACTGAGGTGGCTTTGAGAAACCCAGCCTTCCCTCTG  
 CGGCAGACTGGTCAAGTCTCTGAGTGCCTCCAGTGAAGGAGTGGAGAGTGAAGTGTCTCAGCTCAC  
 ACTGTCCGACCACGAGCAGAGAACTCTATGAAGTCCAGGCTTGTCCAGACAGCCTTCCGGAAGTAC  
 AAGGGCAGACCCCTCGGGAACAGCAAGAAGTGGCTGCTGCCGTATCCAGCGCTGTACAGGAAGTACA  
 AACAGCTGACATGGATAGCCTTGAAGTATGCATTTACAAAAAGATGACCCAGGCGGCCATCCTTATCCA  
 GAGCAAATTCGAAGTACTATGAGCAGAAGCGGTTCCAGCAGAGCCGGCGCGCTGCAGTGTGATCCAG  
 AACTTCTACCGGAGTTACAAGAAGTGTGGCCGGAGACGGCCGGCCGAGGACCGCTGTCATCGTGCAGC  
 AGAAGCTCAGGAGCAGTTTGTGACAAAAAGCAGGACCAAGCTGCTCGAAAGATAATGAGGTTTCTGCG  
 TCGCTGTGCCACAGCCCTGTTGGCCATAGGCTGTACAAAAGGAGTGAAGAATTGAAAAAGGCCAA  
 GGAAT

AGCGGACCGACGCGTACGCGGCCGCTCGAG - GFP Tag - GTTTAA

**Protein Sequence:**

>MG226945 representing NM\_001081557  
 Red=Cloning site Green=Tags(s)

MWRAEGKWLPKTSRKSVSQSVFCGTSTYCVLNTVPIEDDHGNSNSSHVKIFLPKKLLECLPKCSSLPKE  
 RHRWNTNEEIAAYLITFEKHEEWLTTSPKTRPQNGSMILYNRKKVKYRKDGYCWKKRDKGKTTREDHMKL  
 KVQGVVECLYGCYVHSSIIPTFHRRCYWLLQNPDIVLVHYLNVPAIEDCGKPCGPILCSINTDKKEWAKWT  
 KEELIGQLKPMFHGIKWTCNNGNSSSGFSVEQLVQQILDHSHTKQPQRTHNCLCTGSLGAGSSVHHKCNCS  
 AKHRIISPKEVPRAGGYGGHSEVQHNDVSEKHEPESHGRSTSREKRNKGVAKPALLHQNSTEVSSTNQVE  
 VPDTTQSSPVSISSSLNSDPDMVDSPPVTVGVSSMAVASVMGGLSQSATVFMSEVTNEAVYTMSPTAGPNH  
 HLLSPDASQGLVLAVSSDGHKFAFPTTGSDDLMLPANVSEELVLSTLLDGGRIKIPETAMNFDPCFLN  
 NPKQGGTYGGGLKAEMVSTNIRHSPPAERSFGFTSVLTKKIKTEDTSFEQQMAKAAAYSSAAAAASS  
 LTLTAAGSSLLPSGGGLSPSTTLEQMDFAIDSNKDYASSFSQTGHSPHIHQTPSPSFFLQDASKPLPLE  
 QNTHSSLESAGAFVMPYVKTEASSQTSSCSHVETRIESTSSLHLMQFQANFQAMAAEGEVTMETSQAA  
 EGNEVLLKSGELQACGSEHYLQPETNGVIRSAGGVPLLPNSVVQGLYPVAQPSLGNSSNMELESLDHFDIS  
 FSNQFSDLINDFISVEGGSGTIYGHQLVSGDSAALSQSEDGARAPFTAEMCIPCCSPQQGSLQLSSAEG  
 GPSTMAYMHVAEVVSAASAQALGMLQQSGRVFMTDYSPEWSYPEGVKVLITGPWQEAASNNYSCLFDQ  
 ISVPASLIQPGVLRICYCPAHDGLVTLQVAFNNQIISNSVVFYKARALPTLPSSQHDWLSLDDNQFRMS  
 ILERLEQMERRMAEMTGSQHKQASGGGGSGSGSGGAGGQAQACASGAGTLGSCFESRVVVVCEKMMSR  
 ACWAKSKHLIHSKTFRGMTHLHLAAAQGYATLIQTLIKWRTKHADSIDLELEVDPLNVDHF SCTPLMWAC  
 ALGHLEAAVLYKWDRAISIPDSLGRPLGIARSRGHVKLAECLEHLQRDEQAQLGQASRIHCAPSEEP  
 TTDSWMAQWQREAMSPPEIPKGVTVIASTNPELRRRPRSEPSNYSTEGHKDYPAPKKHKLNPESFQARQE  
 KLLCTALSLEQPNIRKQSPRSKQSPETISPEGVREYSREAAPTPETAAASQASASQPVVAKWAKDLYI  
 GVSTVQVTGNPKGTSVVKDAAPSQVRPREPMSVLMANREVVNTEMGAYRDRTEHEDCPQPMDDIQVNM  
 TLAEHIIEATPDRIKQENFVMESSALERTDPATISSTMSWLASYLADADRLPSAAHIRSAYTEPLTPSS  
 NASLSPAGSPVSEVAFKPSLPSAADWSEFLSASTSEKVESELAQLTSDHEQRELYEAARLVQTAFRKY  
 KGRPLREQQEVA AVIQR CYRKYQLTWIALKYALYKMTQAAILIQSKFRSYEQKRFQSSRAAVLIQ  
 NFYRSYKCKGRRRPARRTAVIVQQLRSSLLTKKQDQAARKIMRFLRRCRHSPLVDHRLYKRSERIEKGQ  
 GT

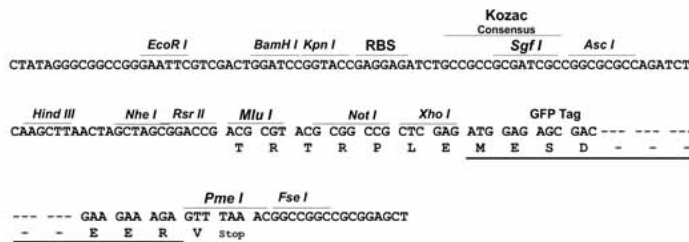
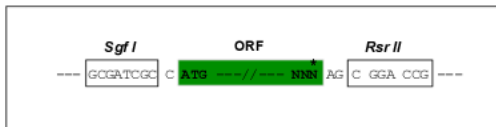
SGPTRRRLE - GFP Tag - V

**Restriction Sites:**

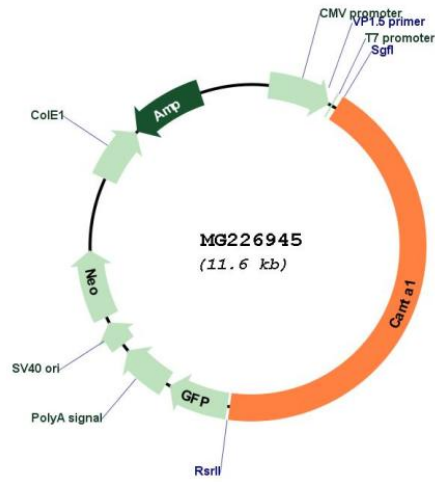
SgfI-RsrII

**Cloning Scheme:**

Cloning sites used for ORF Shuttling:



Plasmid Map:



ACCN: NM\_001081557  
 ORF Size: 5046 bp

**OTI Disclaimer:** Due to the inherent nature of this plasmid, standard methods to replicate additional amounts of DNA in E. coli are highly likely to result in mutations and/or rearrangements. Therefore, OriGene does not guarantee the capability to replicate this plasmid DNA. Additional amounts of DNA can be purchased from OriGene with batch-specific, full-sequence verification at a reduced cost. Please contact our customer care team at [custsupport@origene.com](mailto:custsupport@origene.com) or by calling 301.340.3188 option 3 for pricing and delivery.

The molecular sequence of this clone aligns with the gene accession number as a point of reference only. However, individual transcript sequences of the same gene can differ through naturally occurring variations (e.g. polymorphisms), each with its own valid existence. This clone is substantially in agreement with the reference, but a complete review of all prevailing variants is recommended prior to use. [More info](#)

**OTI Annotation:** This clone was engineered to express the complete ORF with an expression tag. Expression varies depending on the nature of the gene.

**Components:** The ORF clone is ion-exchange column purified and shipped in a 2D barcoded Matrix tube containing 10ug of transfection-ready, dried plasmid DNA (reconstitute with 100 ul of water).

**Reconstitution Method:**

1. Centrifuge at 5,000xg for 5min.
2. Carefully open the tube and add 100ul of sterile water to dissolve the DNA.
3. Close the tube and incubate for 10 minutes at room temperature.
4. Briefly vortex the tube and then do a quick spin (less than 5000xg) to concentrate the liquid at the bottom.
5. Store the suspended plasmid at -20°C. The DNA is stable for at least one year from date of shipping when stored at -20°C.

**RefSeq:** [NM\\_001081557.3](#), [NP\\_001075026.1](#)

**RefSeq Size:** 8448 bp

**RefSeq ORF:** 5049 bp

**Locus ID:** 100072

**UniProt ID:** [A2A891](#)

**Cytogenetics:** 4 E2

**Gene Summary:** Transcriptional activator.[UniProtKB/Swiss-Prot Function]