

Product datasheet for **MG226931**

Klf1 (NM_010635) Mouse Tagged ORF Clone

Product data:

Product Type:	Expression Plasmids
Product Name:	Klf1 (NM_010635) Mouse Tagged ORF Clone
Tag:	TurboGFP
Symbol:	Klf1
Synonyms:	Eklf; Nan
Mammalian Cell Selection:	Neomycin
Vector:	pCMV6-AC-GFP (PS100010)
E. coli Selection:	Ampicillin (100 ug/mL)
ORF Nucleotide Sequence:	>MG226931 representing NM_010635 Red=Cloning site Blue=ORF Green=Tags(s)

GACGTTGTATACGACTCCTATAGGGCGGCCGGAATTCGTCGACTGGATCCGGTACCGAGGAGATCTGCC
GCC**GGCGCGCC**

ATGAGGCAGAAGAGAGAGAGAGGAGGCGCTGAGGTCCAGGGTGGACACCAGCCAGCCATGGCCTCAGCTGAGA
CTGTCTTACCCTCCATCAGTACACTCACCACCCTGGGACAGTTTCTGGACACCCAGGAGGACTTCCTCAA
GTGGTGGCGGTCTGAGGAGACGCAGGATTTGGGGCCGGGCCCCGAATCCTACGGGGCCGTCCCTTCAC
GTGAGTCTGAAATCGGAGGACCCTCCGGAGAGGACGATGAGAGGGACGTGACCTGTGCGTGGGACCCGG
ATCTTTTCTTACAACTTTCCAGTTCGGAGTCTCCCGGCACTCCCGGACCTATGCCCTGGCGCCAG
CGTGGGGCCAGTGGCACAGTTCGAGCCGCTGAGTCTCTGGGCGCCTATGCGGGTGGCCAGGGTTGGTG
ACTGGGCTTTGGGCTCCGAGGAGCACACAAGCTGGGCGCACCCGACTCCGAGACCCCGAGCCCTGAAC
CCTTCGTGGCCCTGCCCTGGCCCCGGGACTCGCTCCAAAGGCTCAGCCCTCATACTCCGACTCGCGAGC
GGGCTCCGTAGGGGGCTTCTCCCGCGGGCGGGCTTGGCGTCCCGCAGCTCCAGGCGCCCCATATGGG
CTGCTGTCGGGATACCCCGCGTGTACCCCGGCCACAGTACCAAGGCCACTTCCAGTCTTTTCGGGGC
TCGCGGCGCTTCTGCTGGTCCCACGGCGCCCCCTTCTTCTGAATTGTCTGGGACCTGGGACTGTGGC
CACAGAACTCGGGGCACTGCGATCGCCGAGACGCAGGCTTGTCCCGGGAAGTGGCGCCCAAAACGC
AGCCGGCGAAGTTGGCACCTAAGAGGCGAGCGGCACATACGTGCGGGCACGAAGGCTCGGGGAAGAGCT
ACACCAAGAGCTCGCACCTCAAGGCGCACCTGCGCACGCACCGGAGAGAGAAGCCTTATGCCTGCTCCTG
GGACGGCTGTGACTGGAGTTTCGCTCGCTCAGACGAACTGACGCGCCACTACCGGAAGCACACTGGACAT
CGTCCCTTCTGCTGTGGCCTCTGCCACGTGCTTTTTACGCTCTGACCCTTAGCTCTGCACATGAAGC
GTCACCTC

ACGCGTACGCGGCCGCTCGAG - GFP Tag - GTTTAA



[View online »](#)

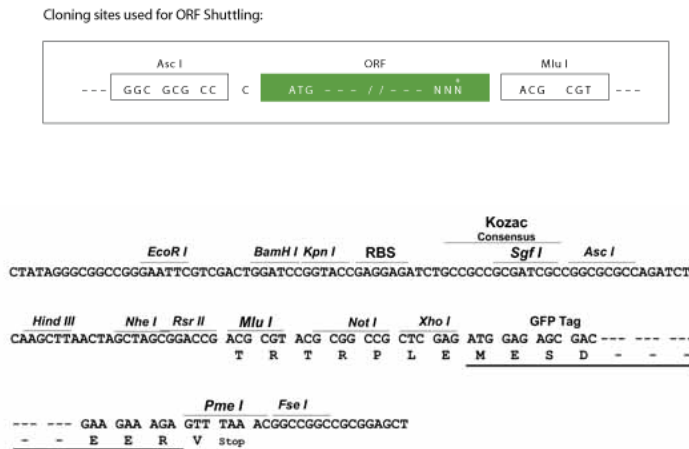
Protein Sequence: >MG226931 representing NM_010635
 Red=Cloning site Green=Tags(s)

MRQKRERRPEVQGGHQPAMASAETVLPISISTLTTLGQFLDTQEDFLKWWRSEETQDLGPGPPNPTGPSLH
 VSLKSEDPSEGEDDERDVTCAWDPDLFLTNFPGSESPGTSRTYALAPSVGPVAQFEPPEESLGAYAGGGLV
 TGPLGSEEHTSWAHPTPRPPAPEPFVAPALAPGLAPKAQPSYSDSRAGSVGGFFPRAGLAVPAAPGAPYG
 LLSGYPALYPAPQYQGHFQLFRGLAAPSAGPTAPPSFLNCLGPGTVATELGATAIAGDAGLSPGTAPPKR
 SRRTLAPKRQAAHTCGHEGCGKSYTKSSHLKAHLRTHTGEKPYACSWDGCWRFARSDLTRHYRKHTGH
 RPFCCGLCPRAF SRSDHLALHMKRHL

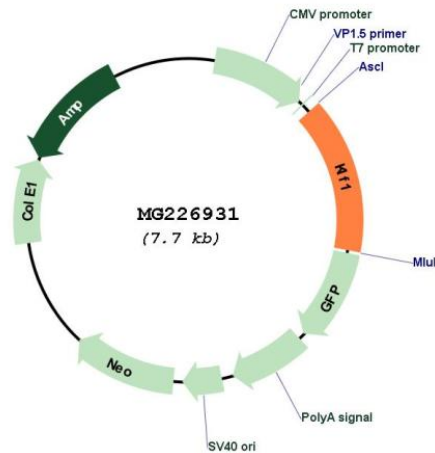
TRTRPLE - GFP Tag - V

Restriction Sites: AscI-MluI

Cloning Scheme:



Plasmid Map:



ACCN: NM_010635

ORF Size:	1128 bp
OTI Disclaimer:	The molecular sequence of this clone aligns with the gene accession number as a point of reference only. However, individual transcript sequences of the same gene can differ through naturally occurring variations (e.g. polymorphisms), each with its own valid existence. This clone is substantially in agreement with the reference, but a complete review of all prevailing variants is recommended prior to use. More info
OTI Annotation:	This clone was engineered to express the complete ORF with an expression tag. Expression varies depending on the nature of the gene.
Components:	The ORF clone is ion-exchange column purified and shipped in a 2D barcoded Matrix tube containing 10ug of transfection-ready, dried plasmid DNA (reconstitute with 100 ul of water).
Reconstitution Method:	<ol style="list-style-type: none">1. Centrifuge at 5,000xg for 5min.2. Carefully open the tube and add 100ul of sterile water to dissolve the DNA.3. Close the tube and incubate for 10 minutes at room temperature.4. Briefly vortex the tube and then do a quick spin (less than 5000xg) to concentrate the liquid at the bottom.5. Store the suspended plasmid at -20°C. The DNA is stable for at least one year from date of shipping when stored at -20°C.
RefSeq:	NM_010635.2 , NP_034765.2
RefSeq Size:	1534 bp
RefSeq ORF:	1131 bp
Locus ID:	16596
Cytogenetics:	8 C3