

Product datasheet for **MG226913**

Fgfr3 (NM_008010) Mouse Tagged ORF Clone

Product data:

Product Type:	Expression Plasmids
Product Name:	Fgfr3 (NM_008010) Mouse Tagged ORF Clone
Tag:	TurboGFP
Symbol:	Fgfr3
Synonyms:	CD333; Fgfr-; Fgfr-3; Flg-2; FR3; HBGF; HBGFR; Mfr3; sa; sam3
Mammalian Cell Selection:	Neomycin
Vector:	pCMV6-AC-GFP (PS100010)
E. coli Selection:	Ampicillin (100 ug/mL)



[View online »](#)

ORF Nucleotide Sequence:

>MG226913 representing NM_008010
 Red=Cloning site Blue=ORF Green=Tags(s)

TTTTGTAATACGACTCACTATAGGGCGGCCGGAATTCGTCGACTGGATCCGGTACCGAGGAGATCTGCC
 GCC**CGGATCGCC**

ATGGTAGTCCCGCCTGCGTGCTAGTGTCTGCGTGGCGTCTGGCTGGAGCTACTCCGAGCCTCTG
 GTCAGAGCAGCGAGTTGTGCGGAGAGCGCAGAGGTTCCAGGGCCTGAACCTAGCCAGCAGGAGCAGGT
 GGCTTCCGGCAGTGGGGACACCGTGGAGCTGAGCTGCCATCCTCCTGGAGGTGCCCCACAGGGCCACG
 GTCTGGGCTAAGGATGGTACAGGTCTGGTGGCCTCCACCGCATCCTGGTGGGGCCTCAGAGGCTGCAAG
 TGCTAAATGCCTCCACGAAGATGCAGGGGTCTACAGCTGCCAGCACCGGCTCACTCGGCGTGTGCTGTG
 CCCTTCACTGTGCGTGTAAACAGATGCTCCATCCTCAGGAGATGACGAAGATGGGAGGACGTGGCTGAA
 GACACAGGGGCTCCTTATTGGACTCGCCCGAGCGAATGGATAAGAACTGCTGGCTGTGCCAGCCGCAA
 AACTGTCCGCTCCGCTGCCAGCTGCTGGCAACCTACCCCTCCATCTCCTGGCTGAAGAATGGCAA
 AGAATCCGAGGGGAGCATCGCATTGGGGGCATCAAGCTCCGGCACCAGCAGTGGAGCTTGGTCATGGAA
 AGTGTGGTACCCTCCGATCGTGGCAACTATACCTGTGTAGTTGAGAACAAGTTTGGCAGCATCCGGCAGA
 CATAACACTGGATGTGCTGGAGCGCTCCCCACACCGGCCATCCTGCAGGCTGGGCTGCCGGCCAACCA
 GACAGCCATTCTAGGCAGTGACGTGGAGTTCCTGCAAGGTGTACAGCGATGCACAGCCACACATCCAG
 TGGCTGAAGCAGCTGGAAGTGAACGGCAGCAAGGTGGGCCTGACGGCAGCCCTACGCTACTGTACTCA
 AGACTGCAGGGCGTAACACCACCGACAAGGAGCTAGAGGTTCTGTCTTGCAAAATGTCACCTTTGAGGA
 CGCGGGGAGTACACCTGCTGGCGGCAATTCTATTGGGTTTTCCATCACTCTGCGTGGCTGGTGGTG
 CTGCCAGCTGAGGAGGAGCTGATGAAACTGATGAGGCTGGCAGCGTGTACGAGGCGTCCCTCAGTACC
 GGTGGTCTTCTCCTTTCATCCTGCTGGTGGCAGCTGTGATACTCTGCCGCTGCCGAGTCCGCCAAA
 GAAGGGCTTGGGCTCGCCACCGTGCACAAGGTCTCTCGCTTCCCGCTTAAGCGACAGGTGCTCTGGAA
 TCTAACTCCTCTATGAACTCCAACACACCCCTGTCCGGATTGCCCGGCTGTCCTCAGGAGAAGTCTGT
 TTCTGGCCAAATGTTTCTGAACTTGAGCTGCCTGCTGACCCCAAGTGGGAGCTATCCAGGACCCGGCTGAC
 ACTTGGTAAGCCTCTTGAGAAGGCTGCTTTGGACAGGTGGTATGGCAGAAGCTATTGGCATCGACAAG
 GACCGTACTGCCAAGCCTGTACCCTGGCCGTGAAGATGCTGAAAGATGATGCGACTGACAAGGACCTGT
 CGGACCTGGTATCTGAGATGGAGATGATGAAAATGATTGGCAAGCACAAGAACATCATTAACTGCTGGG
 GCGTGCACACAGGTGGGCCCTGTATGTGCTGGTGGAGTACGCAGCCAAGGGCAATCTCCGGGAGTTC
 CTTCCGGGCGGGCCCTCCAGGCATGGACTACTCTTTGATGCCTGCAGGCTGCCAGAGGAACAGCTCA
 CCTGCAAGGATCTAGTGTCTGTGCTACCAGGTGGCAGCGGGCATGGAATACTTGGCTTCTCAGAAGTG
 TATTACAGAGACTTGGCTGCCAGAAACGTCCTGGTGACCGAGGACAATGTGATGAAGATTGCGGACTTT
 GGCTGGCTCGAGATGTGCACAACCTGGACTACTACAAGAAGACCACAAATGGCCGGCTACCTGTGAAGT
 GGATGGCACCAGAGGCCCTTTTTGACCGAGTCTACACCCACAGAGTGTGTTGGTCTTTTGGTGTCTCT
 CCTCTGGGAGATCTTTACGCTGGGGGCTACCGTATCCTGGCATCCAGTGGAAAGGCTTTTCAAGCTG
 TTGAAAGAGGGCCACCGCATGGACAAGCCAGCCAGCTGCACACATGACCTGTACATGATCATGCGGGAAT
 GTTGGCATGCGGTGCCTTACAGAGGCCACCTTCAAGCAGTTGGTAGAGGATTTAGACCGCATCCTCAC
 TGTGACATCAACCGACGAGTACTTGGACCTCTCCGTGCCGTTTGGAGCAGTACTCGCCAGGTGGCCAGGAC
 ACGCCTAGCTCCAGCTCGTCCGGAGATGACTCGGTGTTACCCATGACCTGCTACCCCGAGTCCACCCA
 GTAACGGGGACCTCGGACG

ACGCGTACGCGGCCGCTCGAG – GFP Tag – GTTTAA

Protein Sequence: >MG226913 representing NM_008010
Red=Cloning site Green=Tags(s)

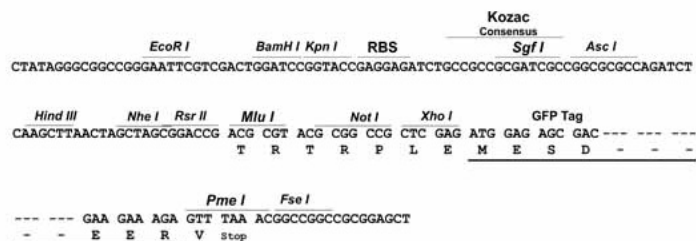
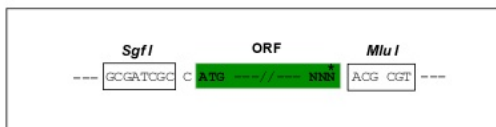
```
MVVPACVLVFCVAVVAGATSEPPGPEQRVVRRAAEVPGPEPSQQEQVAFGSGDTVELSCHPPGGAPTGPT
VWAKDGTGLVASHRILVGPQRLQVLNASHEDAGVYSCQHRLTRRVLCHF SVRVTDAPSSGDDEDGEDVAE
DTGAPYWTRPERMDKLLAVPAANTVFRFCPAAGNPTPSISWLKNGKEFRGEHRIGGIKLRHQWLSLME
SVVPSDRGNVTCVVENKFGSIRQTYTLDVLEERSPHRPILQAGLPANQTALIGSDVEFHCKVYSDAQPHIQ
WLKHVEVNGSKVGPDPGTPYVTVLKTAGANTTDKELEVL SLHNVT FEDAGEYTCLAGNSIGFSHSAWL VV
LPAAEEELMETDEAGSVYAGVLSYGVVFFLFI LVVAAVILCRLRSPPKKGLGSPTVHKVSRFPLKRQVSLE
SNSSMNSNTPLVRIARLSSGEGPVLANVSELELPADPKWELSRTRLTLGKPLGEGCFGQVVM AEAI GIDK
DRTAKPVTVAVKMLKDDATDKDLSDLVSEMEMMKMIGKHKNIINLLGACTQGGPLYVVEYAAKGNLREF
LRARRPPGMDYSFDACRLPEEQLTCKDLVSCAYQVARGMEYLASQKCIHRDLAARNVLTEDNVMKIADF
GLARDVHNL DYYKTTNGRLPVKWM APEALFDRVYTHQSDVWSFGVLLWEIFTLGGSPYPGIPVEELFKL
LKEGHRMDKPASCTHDL YMIMRECWHAVPSQRPTFKQLVEDLDRILTVTSTDEYLDLSVPFEQYSPGGQD
TPSSSSSGDSDVFTHDLLPPGPPSNGGPRT
```

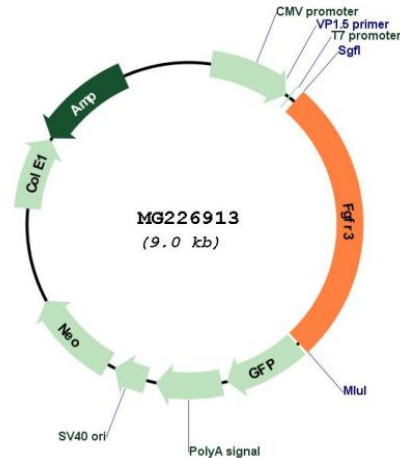
TRTRPLE - GFP Tag - V

Restriction Sites: Sgfl-Mlul

Cloning Scheme:

Cloning sites used for ORF Shutting:



Plasmid Map:


ACCN: NM_008010

ORF Size: 2400 bp

OTI Disclaimer: The molecular sequence of this clone aligns with the gene accession number as a point of reference only. However, individual transcript sequences of the same gene can differ through naturally occurring variations (e.g. polymorphisms), each with its own valid existence. This clone is substantially in agreement with the reference, but a complete review of all prevailing variants is recommended prior to use. [More info](#)

OTI Annotation: This clone was engineered to express the complete ORF with an expression tag. Expression varies depending on the nature of the gene.

Components: The ORF clone is ion-exchange column purified and shipped in a 2D barcoded Matrix tube containing 10ug of transfection-ready, dried plasmid DNA (reconstitute with 100 ul of water).

Reconstitution Method:

1. Centrifuge at 5,000xg for 5min.
2. Carefully open the tube and add 100ul of sterile water to dissolve the DNA.
3. Close the tube and incubate for 10 minutes at room temperature.
4. Briefly vortex the tube and then do a quick spin (less than 5000xg) to concentrate the liquid at the bottom.
5. Store the suspended plasmid at -20°C. The DNA is stable for at least one year from date of shipping when stored at -20°C.

RefSeq: [NM_008010.5](#), [NP_032036.2](#)

RefSeq Size: 4219 bp

RefSeq ORF: 2403 bp

Locus ID: 14184

Cytogenetics: 5 17.83 cM

Gene Summary:

This gene encodes a member of the fibroblast growth factor receptor family. Members of this family are highly conserved proteins that differ from one another in their ligand affinities and tissue distribution. A representative protein consists of an extracellular region composed of three immunoglobulin-like domains, a single hydrophobic membrane-spanning segment, and a cytoplasmic tyrosine kinase domain. The extracellular portion of the protein interacts with fibroblast growth factors, setting in motion a cascade of downstream signals, ultimately influencing mitogenesis and differentiation. This family member binds acidic and basic fibroblast growth hormone and plays a role in bone development and maintenance. Mutations in this gene may be associated with craniosynostosis and multiple types of skeletal dysplasia. A pseudogene of this gene is located on chromosome 1. Alternatively spliced transcript variants encoding multiple isoforms have been observed for this gene. [provided by RefSeq, Apr 2011]