

## Product datasheet for **MG226912**

### Trpc4 (NM\_016984) Mouse Tagged ORF Clone

#### Product data:

Product Type:	Expression Plasmids
Product Name:	Trpc4 (NM_016984) Mouse Tagged ORF Clone
Tag:	TurboGFP
Symbol:	Trpc4
Synonyms:	CCE1; STRPC4; Trp4; Trrp4
Mammalian Cell Selection:	Neomycin
Vector:	pCMV6-AC-GFP (PS100010)
E. coli Selection:	Ampicillin (100 ug/mL)



[View online »](#)

**ORF Nucleotide Sequence:**

>MG226912 representing NM\_016984  
 Red=Cloning site Blue=ORF Green=Tags(s)

TTTTGTAATACGACTCACTATAGGGCGGCCGGAATTCGTCGACTGGATCCGGTACCGAGGAGATCTGCC  
 GCC**CGGATCGCC**

ATGGCTCAGTTCTATTACAAAAGAAATGTCAACGCCCCCTACAGAGACCGCATCCCCTGAGGATTGTCA  
 GAGCAGAATCTGAGCTCTCACCATCAGAGAAAGCCTACTTGAATGCTGTGGAGAAGGGGGACTATGCAAG  
 CGTCAAGAAGTCTCTGGAGGAAGCTGAGATTTATTTTAAAATCAACATTAAGTGCATCGACCCCTGGGA  
 AGGACCGCCCTCCTCATTGCCATTGAAAATGAGAATCTGGAGCTTATTGAACTATTGTTGAGTTTCAATG  
 TCTATGTAGGCGATGCGCTGCTTACGCCATCAGAAAAGAGGTGGTTGGAGCCGTGGAGCTACTGCTGAA  
 CCACAAAAGCCAAGTGGAGAGAAGCAGGTGCCTCCCATTCTCCTTGATAAACAGTTCTCTGAATCACT  
 CCGGACATCACACCCATCATCTTGGCTGCACATACAAATAATTACGAGATAATCAAACCTTTGGTTGAGA  
 AAGGTGTCTCAGTGCCAGACCCACGAGGTCCGCTGAACTGTGTTGAGTGTCTCCAGCTCGGATGT  
 GGACAGCCTCAGGCATTCAGGTCAGGCTCAACATCTACAAGGCCTTGGCCAGCCCTCGCTCATTGCC  
 CTGTCAAGCGAAGACCCTTCTTACTGCCTTTCAGTTAAGTTGGGAGCTGCAAGAACTCAGCAAGGTGG  
 AGAACGAATCAAGTCGGAGTATGAGGAGCTGTCTAGACAGTGAACAATTTGCCAAGGACCTCCTAGA  
 TCAGACACGGAGTTCAGAGAGCTGAAAATCATTCTTAATTACCGTGATGACAATAGTCTGATCGAAGAA  
 CAGAGTGGAAATGATCTTGCAAGGCTAAAATTAGCCATTAAGTACCGTCAAAAAGAGTTTGTGCTCAGC  
 CCAACTGCCAGCAGCTGCTCGCTTCCCGCTGGTACGATGAGTTCACAGGCTGGAGGAGAAGACACTGGGC  
 GGTGAAGATGGTGACATGTTTATAATAGGACTACTCTCCCCGTCTTCCCGTGTGCTACCTGATAGCT  
 CCCAAAAGCCACTTGGACTGTTTCATCAGAAAGCCATTTATCAAGTTTATCTGCCACACAGCCTCCTATC  
 TGACCTTTTGTCTGCTGCTAGCCTCTCAGCACATCGACAGGTCAGACTTGAACAGGCAAGGTCC  
 ACCACCAACCATCGTGGAGTGGATGATATTACCGTGGGTCTGGTTTTATATGGGAGAGATTAACAG  
 ATGTGGGATGGCGGACTCCAGGATTACATCCATGACTGGTGAATCTAATGGACTTTGTGATGAACTCCT  
 TGTATCTGGCAACAATCTCCTTGAAGATTGTCGCGTTTGTAAAGTACAGTCTGTAACCCACGGGAATC  
 ATGGGACATGTGGCACCCACCCTGGTGGCAGAGGCATTATTTGCTATTGCAAACATCTTCAGTTCCCTC  
 CGCCTGATCTCTGTTCACTGCCAATTCTCACCTGGGCCTCTGCAGATATCTTGGAAGGATGCTTC  
 TGGACATCTGAAGTTCTTGTTCATCTACTGCCTCGTGTGCTAGCTTTTGCAAATGGCCTAAATCAGCT  
 GTACTTTTACTATGAAGAAACAAAGGGGCTAAGCTGCAAAGGCATCCGGTGCAGAAACAGAAACAACCGG  
 TTTTCCACGTTATTCGAGACACTACAGTCCCTGTTTTGGTCAATATTTGGACTCATCAATCTCTATGTTA  
 CCAATGTCAAAGCCAGCAGGATTCAGTGAAGTTGTTGGGGCCACCATGTTGGACATATAATGTCAT  
 CTCTCTGGTTGCTGCTGAACATGTTAATTGCTATGATGAATAATTCTTACCAACTAATTGCCGACCAT  
 GCAGATATAGAATGAAAATTTGCTCGAACAAAGCTTTGGATGAGCTACTTTGAAGAAGGAGGTACCTGCT  
 CTACACCTTTCAATGTCATCCCAAGCCCAAGTCCCTGTGGTACCTGGTCAAGTGGATATGGACACACTT  
 ATGTAAGAAAAAATGAGAAGGAAGCCAGAAAGCTTCGGGACAATTTGGCGGCGTGTGCTGATAACTTG  
 AGAAGACATACCAATACCAAGAGGTGATGAGGAACCTGGTGAAGCGGTACGTGGCAGCCATGATCAGAG  
 AGGCAAAAACCGAAGAAGGCTTGACGGAGGAGAATGTTAAGGAACTAAAGCAAGACATTTCTAGCTTCCG  
 CTTGCAAGTTCTGGGATTGCTCAGAGGAAGCAAGCTCTCTACAATACAGTCAGCCAACGCGGCGAGTTCA  
 GCGGACTCCGACGAGAAGGCCAGAGCGAAGGTAATGGCAAGGACAAGAGAAAGAATCTCAGCCTTTTG  
 ATTTAACCACTCTGATCCACCCGCGTCCGAGCCATTGCCTCCGAGAGACATAACCTAAGCAATGGTTC  
 CGCCCTGGTGGTGCAGGAGCCGCCAGGGAGAAGCAGAGGAAAAGTGAATTTGTGGCTGATATCAAAAAC  
 TTCGGTTATTTTATAGACGGTCAAACAAAATGCTGCTGAGCAAAAACGAAAACCAATCTTCTCTGTTT  
 CAGAAGAAATTAAGTCAACAGGCGGCAGGAGCACTTGGAGCAAAATATCGAACTGGAATCCAAAGGATT  
 AGCTTACGGGGTACCCGAGCATTCTGGTCTCAATGAACAGTGTGTGCTAGTAGACCATAGAGAAAGG  
 AATACGGACACTTTGGGTTTACAGGTAGCAAGAGAGTGTGCTCCACCTTCAAGTCGGAGAAGGTGGTGG  
 TGAAGACACCGTCCCTATTATACCAAAGGAGAAACACGCCACGAGGAGGACTCGAGCATAGACTATGA  
 CTTAAGCCCCACGGACACAGCTGCCACGAAGATTATGTACCACAAGATTG

AG**CGGACCG**ACGCGTACGCGGCCGCTCGAG - GFP Tag - GTTTAA

Protein Sequence: >MG226912 representing NM\_016984  
 Red=Cloning site Green=Tags(s)

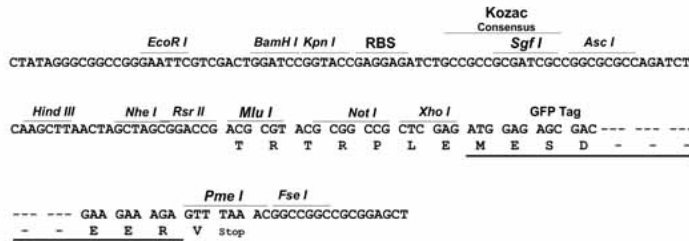
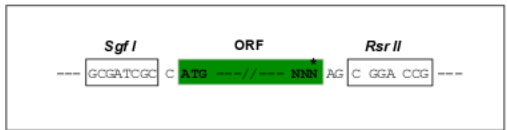
MAQFYKRNVNAPYRDRIPLRIVRAESELSPSEKAYLNAVEKGDYASVKKSLLEEAEIYFKININCIDPLG  
 RTALLIAIENENLELIELLLSFNVVYVDALLHAIRKEVVGAVELLLNHKKPSGEKQVPPILLDKQFSEFT  
 PDITPIILAAHTNYYEIIKLLVQKGVSVPRPHEVRCNCVEC VSSSDVDSL RHSRSLNIYKALASPSLIA  
 LSSEDPFLTAFQLSWELQELSKVENEFKSEYEELSRQCKQFAKDLLDQTRSSRELEIILNYRDDNSLIEE  
 QSGNDLARKLAIKYRQKEFVAQPNCQQLLASRWYDEFPGWRRRHAWVKMVTFCFIIGLLFPVFSVCYLIA  
 PKSPLGLFIRKPFIKFIHTASYLTFLFLLLLASQHIDRSDLNRQGPPTIVIEWMILPWVLFWGEIKQ  
 MWDGGLQDYIHDWWNLDFVMNSLYLATISLKIVAFVKYSALNPRESWDMWHPTLVAEALFAIANIFSSL  
 RLISLFTANSHLGPLQISLGRMLLDILKFLFIYCLVLLAFANGLNQLFYFYEETKGLSCKGIRCEKQNNA  
 FSTLFETLQSLFWSIFGLINLYVTNVKAQHEFTEFVGATMFGTYNVISLVVLLNMLIAMMNSYQLIADH  
 ADIEWKFARTKLWMSYFEEGGTLPTPFNVIPSPKSLWYLVKWIWHLCKKKMRRKPESFGTIGRAADNL  
 RHHHQYQEVMRNLVKRYVAAMIREAKTEEGLTEENVKELKQDISSFRFEVLGLLRGSKLSTIQSANAASS  
 ADSDEKSQSENGKDKRKNLSLFDLTTLIHPRSAAIASERHNL SNGSALVVQEPREKQKRVNFVADIKN  
 FGLFHRRSKQNAAEQANQIFSVSEEITRQQAAGALERNIELESKGLASRGDRSIPGLNEQCVLVDHRER  
 NDTDLGLQVGRKVCSTFKSEKVVVEDTVPIIPKEKHAHEEDSSIDYDLSPTDTAAHEDYVTRL

SGPTRRRLE - GFP Tag - V

Restriction Sites: SgfI-RsrII

Cloning Scheme:

Cloning sites used for ORF Shuttling:

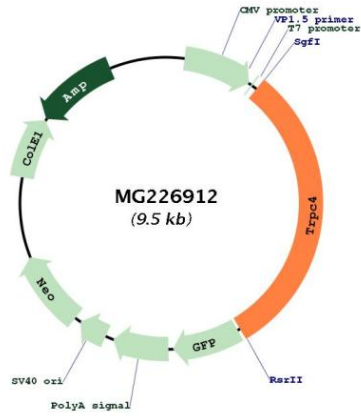


ACCN: NM\_016984

ORF Size: 2922 bp

<b>OTI Disclaimer:</b>	<p>Due to the inherent nature of this plasmid, standard methods to replicate additional amounts of DNA in E. coli are highly likely to result in mutations and/or rearrangements. Therefore, OriGene does not guarantee the capability to replicate this plasmid DNA. Additional amounts of DNA can be purchased from OriGene with batch-specific, full-sequence verification at a reduced cost. Please contact our customer care team at <a href="mailto:custsupport@origene.com">custsupport@origene.com</a> or by calling 301.340.3188 option 3 for pricing and delivery.</p> <p>The molecular sequence of this clone aligns with the gene accession number as a point of reference only. However, individual transcript sequences of the same gene can differ through naturally occurring variations (e.g. polymorphisms), each with its own valid existence. This clone is substantially in agreement with the reference, but a complete review of all prevailing variants is recommended prior to use. <a href="#">More info</a></p>
<b>OTI Annotation:</b>	<p>This clone was engineered to express the complete ORF with an expression tag. Expression varies depending on the nature of the gene.</p>
<b>Components:</b>	<p>The ORF clone is ion-exchange column purified and shipped in a 2D barcoded Matrix tube containing 10ug of transfection-ready, dried plasmid DNA (reconstitute with 100 ul of water).</p>
<b>Reconstitution Method:</b>	<ol style="list-style-type: none"><li>1. Centrifuge at 5,000xg for 5min.</li><li>2. Carefully open the tube and add 100ul of sterile water to dissolve the DNA.</li><li>3. Close the tube and incubate for 10 minutes at room temperature.</li><li>4. Briefly vortex the tube and then do a quick spin (less than 5000xg) to concentrate the liquid at the bottom.</li><li>5. Store the suspended plasmid at -20°C. The DNA is stable for at least one year from date of shipping when stored at -20°C.</li></ol>
<b>RefSeq:</b>	<a href="#">NM_016984.1</a>
<b>RefSeq Size:</b>	3490 bp
<b>RefSeq ORF:</b>	2925 bp
<b>Locus ID:</b>	22066
<b>UniProt ID:</b>	<a href="#">Q9QUQ5</a>
<b>Cytogenetics:</b>	3 25.43 cM
<b>Gene Summary:</b>	<p>Thought to form a receptor-activated non-selective calcium permeant cation channel. Probably is operated by a phosphatidylinositol second messenger system activated by receptor tyrosine kinases or G-protein coupled receptors. Acts as a cell-cell contact-dependent endothelial calcium entry channel. Has also been shown to be calcium-selective (By similarity). May also be activated by intracellular calcium store depletion. Trpc4 deficient mice lack a store-operated calcium entry in endothelial cells.[UniProtKB/Swiss-Prot Function]</p>

Product images:



Circular map for MG226912