

Product datasheet for **MG226875**

Gp1bb (NM_001001999) Mouse Tagged ORF Clone

Product data:

Product Type: Expression Plasmids
Product Name: Gp1bb (NM_001001999) Mouse Tagged ORF Clone
Tag: TurboGFP
Symbol: Gp1bb
Mammalian Cell Selection: Neomycin
Vector: pCMV6-AC-GFP (PS100010)
E. coli Selection: Ampicillin (100 ug/mL)
ORF Nucleotide Sequence: >MG226875 representing NM_001001999
 Red=Cloning site Blue=ORF Green=Tags(s)

TTTTGTAATACGACTCACTATAGGGCGGCCGGAATTCGTCGACTGGATCCGGTACCGAGGAGATCTGCC
 GCC**CGATCGCC**

ATGCTCCCGCCTCATCTAGTGCTTCTCTTTCAGGGCCCCGTGGGGCGCTGAGCCTGCTGCTTCTGTTGC
 TAGCGTGTCTCAGCCGCCAGCCTCTGGCTGCCCGCGCCATGCAGCTGCGCAGGGACGCTCGTGGACTG
 TGGGGCCCGGGGCTGACCTGGGCGTCTGCGGCTGCCTTCCCTCCCGACACCACCGAATTGGTGCTG
 ACCGGCAACAACCTGACGGCGCTGCCGCCGGGCTTCTGGACGCGTTGCCTGCTGCGCGCAGCACACC
 TGGCGCCAACCCCTGGCGCTGCGACTGCCGCTATTGCCGCTGCGCGCCTGGCTGGCCGCCGCCGGA
 GCGCGCGCCCTACCGCGACTGCGCTGTGTGCGGCCCCAGCGCTGCGCGCCGCTTGTGCCCTACGTG
 GCGGAGGATGAGCTGCGGGCCGCTGCGCACCCGGTCTACTCTGCTGGGAGCACTGGTGGCCAGCTAG
 CACTGCTGGTCTCGGGCTGCTACACGCGCTGCTATTGGCACTTCTACTAGGTCGCTGCGGAGGCTGCG
 CGCGCTGCGCGCACGCTCCATCCAAGATTCTCTCACAGCCCCGCTGGTGGCCGAGTCGGCCAGA
 GGTGGTGCATCC

AGCG**ACCG**ACGCGTACGCGGCCGCTCGAG - GFP Tag - GTTTAA

Protein Sequence: >MG226875 representing NM_001001999
 Red=Cloning site Green=Tags(s)

MLPPHPSASLSGPRGALLLLLLLALLSRPASGCPAPCSCAGTLVDCGRRGLTWASLPAAFPPDTELVL
 TGNLNTALPPGLLDALPALRAAHLGANPWRCDCRLLPLRAWLAGRPERAPYRDLRCVAPPALRGRLLPYV
 AEDELRAACAPGLLCWGALVAQLALLVLGLLHALLLALLLGRLLRRLRARARARSIQEFSLTAPLVAESAR
 GGAS

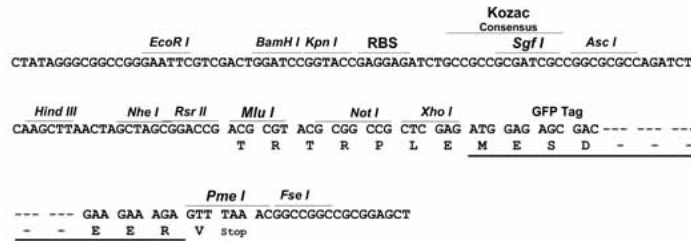
SGP**TRRRLE** - GFP Tag - V



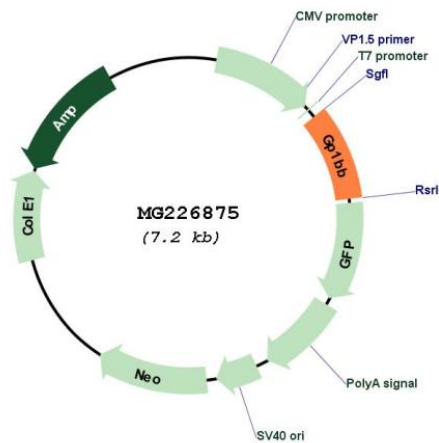
Restriction Sites: SgfI-RsrII

Cloning Scheme:

Cloning sites used for ORF Shuttling:



Plasmid Map:



ACCN: NM_001001999

ORF Size: 642 bp

OTI Disclaimer: The molecular sequence of this clone aligns with the gene accession number as a point of reference only. However, individual transcript sequences of the same gene can differ through naturally occurring variations (e.g. polymorphisms), each with its own valid existence. This clone is substantially in agreement with the reference, but a complete review of all prevailing variants is recommended prior to use. [More info](#)

OTI Annotation: This clone was engineered to express the complete ORF with an expression tag. Expression varies depending on the nature of the gene.

Components:	The ORF clone is ion-exchange column purified and shipped in a 2D barcoded Matrix tube containing 10ug of transfection-ready, dried plasmid DNA (reconstitute with 100 ul of water).
Reconstitution Method:	<ol style="list-style-type: none">1. Centrifuge at 5,000xg for 5min.2. Carefully open the tube and add 100ul of sterile water to dissolve the DNA.3. Close the tube and incubate for 10 minutes at room temperature.4. Briefly vortex the tube and then do a quick spin (less than 5000xg) to concentrate the liquid at the bottom.5. Store the suspended plasmid at -20°C. The DNA is stable for at least one year from date of shipping when stored at -20°C.
RefSeq:	<u>NM_001001999.1, NP_001001999.1</u>
RefSeq Size:	2085 bp
RefSeq ORF:	645 bp
Locus ID:	14724
Cytogenetics:	16 11.53 cM
Gene Summary:	Gp-Ib, a surface membrane protein of platelets, participates in the formation of platelet plugs by binding to von Willebrand factor, which is already bound to the subendothelium. [UniProtKB/Swiss-Prot Function]