

## Product datasheet for **MG226871**

### Gp1bb (NM\_010327) Mouse Tagged ORF Clone

#### Product data:

Product Type: Expression Plasmids  
 Product Name: Gp1bb (NM\_010327) Mouse Tagged ORF Clone  
 Tag: TurboGFP  
 Symbol: Gp1bb  
 Mammalian Cell Selection: Neomycin  
 Vector: pCMV6-AC-GFP (PS100010)  
 E. coli Selection: Ampicillin (100 ug/mL)  
 ORF Nucleotide Sequence: >MG226871 representing NM\_010327  
 Red=Cloning site Blue=ORF Green=Tags(s)

TTTTGTAATACGACTCACTATAGGGCGGCCGGAATTCGTCGACTGGATCCGGTACCGAGGAGATCTGCC  
 GCC**CGATCGCC**

ATGGGCTCCCGGCCCGTGGGGCGCTGAGCCTGCTGCTTCTGTTGCTAGCGCTGCTCAGCCGCCAGCCT  
 CTGGCTGCCCCGCGCCATGCAGCTGCGCAGGGACGCTCGTGGACTGTGGGCGCCGCGGGCTGACCTGGGC  
 GTCGCTGCCGGCTGCCTCCCTCCGACACCACCGAATTGGTGTGACCGGCAACAACCTGACGGCGCTG  
 CCGCCCGGGCTTCTGGACGCGTTGCTGCTCTGCGCGCAGCACACCTGGGCGCAACCCCTGGCGCTGCG  
 ACTGCCGCTATTGCCGCTGCGCGCTGGCTGGCCGGCCCGCCCGAGCGCGCCCTACCGGACCTGCG  
 CTGTGTGCGCCCCAGCGCTGCGCGGCCGCTTGTGCTGCCCTACGTGGCGGAGGATGAGCTGCGGGCCGCG  
 TCGCACCCGGTCTACTCTGCTGGGAGCACTGGTGGCCAGCTAGCACTGCTGGTCTCGGGCTGCTAC  
 ACGCGTGTCTATTGGCACTTCTACTAGGTGCGCTGCGGAGGCTGCGCGCGCTGCGCGCGCACGCTCCAT  
 CCAAGAGTTCTCTCACAGCCCCGCTGGTGGCCGAGTCGGCCAGAGGTGGTGCATCC

AGCGGACCGACGCGTACGCGGCCGCTCGAG - GFP Tag - GTTTAA

Protein Sequence: >MG226871 representing NM\_010327  
 Red=Cloning site Green=Tags(s)

MGSRPRGALSLLLLLALLSRPASGCPAPCSCAGTLVDCGRRGLTWASLPAAFPDPDTTELVLTGNNLTAL  
 PPGLLDALPALRAAHLGANPWRCDCRLLPLRAWLAGRPERAPYRDLRCVAPPALRGRLLPYVAEDELRAA  
 CAPGLLCWALVAQLALLVLGLLHALLLALLGRLRRLRARARARSIQEFSLTAPLVAESARGGAS

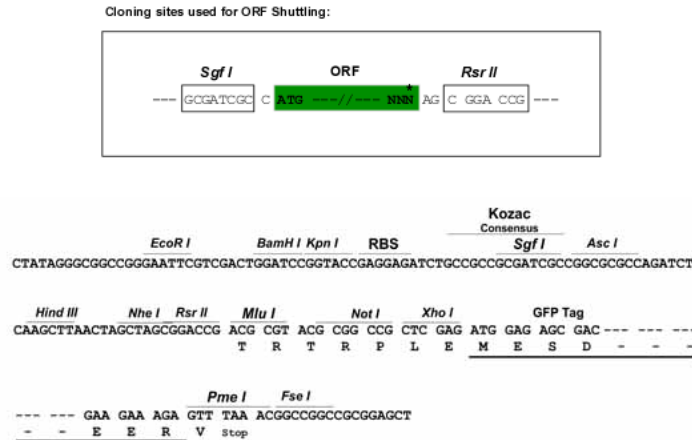
SGPTRRRLE - GFP Tag - V

Restriction Sites: SgfI-RsrII



[View online »](#)

**Cloning Scheme:**



**ACCN:** NM\_010327

**ORF Size:** 618 bp

**OTI Disclaimer:** The molecular sequence of this clone aligns with the gene accession number as a point of reference only. However, individual transcript sequences of the same gene can differ through naturally occurring variations (e.g. polymorphisms), each with its own valid existence. This clone is substantially in agreement with the reference, but a complete review of all prevailing variants is recommended prior to use. [More info](#)

**OTI Annotation:** This clone was engineered to express the complete ORF with an expression tag. Expression varies depending on the nature of the gene.

**Components:** The ORF clone is ion-exchange column purified and shipped in a 2D barcoded Matrix tube containing 10ug of transfection-ready, dried plasmid DNA (reconstitute with 100 ul of water).

**Reconstitution Method:**

1. Centrifuge at 5,000xg for 5min.
2. Carefully open the tube and add 100ul of sterile water to dissolve the DNA.
3. Close the tube and incubate for 10 minutes at room temperature.
4. Briefly vortex the tube and then do a quick spin (less than 5000xg) to concentrate the liquid at the bottom.
5. Store the suspended plasmid at -20°C. The DNA is stable for at least one year from date of shipping when stored at -20°C.

**RefSeq:** [NM\\_010327.2](#), [NP\\_034457.1](#)

**RefSeq Size:** 1847 bp

**RefSeq ORF:** 621 bp

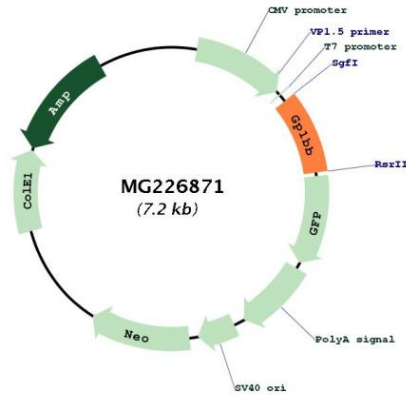
**Locus ID:** 14724

**UniProt ID:** [P56400](#)

**Cytogenetics:** 16 11.53 cM

**Gene Summary:** Gp-Ib, a surface membrane protein of platelets, participates in the formation of platelet plugs by binding to von Willebrand factor, which is already bound to the subendothelium. [UniProtKB/Swiss-Prot Function]

**Product images:**



Circular map for MG226871