

Product datasheet for **MG226862**

Porcn (NM_023638) Mouse Tagged ORF Clone

Product data:

| | |
|---------------------------|--------------------------------------------------------------------|
| Product Type: | Expression Plasmids |
| Product Name: | Porcn (NM_023638) Mouse Tagged ORF Clone |
| Tag: | TurboGFP |
| Symbol: | Porcn |
| Synonyms: | 2410004O13Rik; AW045557; DXHXS7465e; Mg61; mMg61; Mporc; porc; Ppn |
| Mammalian Cell Selection: | Neomycin |
| Vector: | pCMV6-AC-GFP (PS100010) |
| E. coli Selection: | Ampicillin (100 ug/mL) |



[View online »](#)

ORF Nucleotide Sequence:

>MG226862 representing NM_023638
 Red=Cloning site Blue=ORF Green=Tags(s)

TTTTGTAATACGACTCACTATAGGGCGGCCGGAATTCGTCGACTGGATCCGGTACCGAGGAGATCTGCC
 GCC**CGGATCGCC**

ATGGCCACCTTCAGCCGCCAGGAATTTTCCAGCAGCTACTGCAGGGCTGTCTCCTGCCTACTGTCCAAC
 AGGGCCTTGACCAGATCTGGCTGCTTCTTACCATCTGCTTCGCCCTGCCGCTCCTTTGGAGGCTGGGGTT
 ACCGTCTTACCTGAAGCATGCAAGCACCGTGGCAGGTGGCTTCTTCAGCCTCTACCACTTCTCCAGCTG
 CACATGGTTTGGGTCGTGCTGCTGAGCCTCCTGTGCTACCTCGTGTCTTCTCTGCCGACACTCCTCCC
 ACCGAGGCGTCTTCTCTCCGTACCATCTCATCTACCTGCTCATGGGTGAGATGCACATGGTGGACAC
 CGTGACATGGCACAAGATGCGAGGGGCCAGATGATCGTGGCCATGAAGGCGGTGTCTCTGGGCTTCGAC
 CTGGACCGGGGCGAGGTGGTGCAGTGCCTCACCTGTGGAGTTCATGGGCTACCTCTACTTTGTGGGCA
 CCATCGTCTTTGGGCCCTGGATATCCTTCCACAGCTACCTACAGGCTGTCCAAGGCCGCCACTGAGCCG
 CCGATGGCTGAAGAAGGTGGCCCGAGCCTGGCGCTGGCCCTGCTGTGCCTTGTACTGTCCACTTGTGTG
 GGCCCTACCTCTCCCTACTTTCATCCCCCTCGACGGTGACCGACTCCTTCGCAACAAGAAACGCAAAAG
 CCAGGGGACCATGGTAAGGTGGCTACGAGCCTACGAGAGTGTGTCTCCTTCCACTTCAGCAACTATTT
 TGTGGGCTTTCTGTCTGAGGCCACAGCCACATTGGCCGGGGCTGGCTTACGGGAGGAGAAGGACCACCTG
 GAATGGGACCTGACAGTCTTAGACCGTTGAATGTGGAGCTGCCCGGTCCATGGTGAAGTTGTCAAA
 GCTGGAACCTGCCATGTCTTATGGTTAAATAATTATGTTTTCAAAAATGCCCTTCGCCTGGGGACCTT
 CTCTGTGTGCTGGTACCTATGCAGCCAGTGCCTCCTGCATGGCTTCAAGTTCCACCTGGCTGCTGTG
 CTGTGCTCCCTGGCATTACACTTATGTGGAACATGTCTCAGAAAGCGCCTGGCTCAGATCCTCAGTG
 CTTGATCTTGTCAAAGCGTTGTCTGCCAGACTGTTACATCGGCATCGCTTGGGCTGGGGGTACGAGC
 CTTAAACTTGCTCTTTGGGGCCCTGGCTATCTTCCACCTGTCTACCTGGGCTCCCTGTTTGATGTCGAT
 GTGGACGACACCAGAGGAGCAGGGCTACGGCATGGCATACTGTCCCAAGTGGTCCAGAGCTCAGCT
 GGGCCAGTCACTGGTCACTTTTGGATGCTGGATCTTCTACCGTCTCATAGGC

ACGCGTACGCGGCCGCTCGAG - GFP Tag - GTTTAA

Protein Sequence:

>MG226862 representing NM_023638
 Red=Cloning site Green=Tags(s)

MATFSRQEFFQQLLQGCLLPTVQQGLDQIWLILLICFACRLLWRLGLPSYLKHAHVAGGFFSLYHFFQL
 HMVWVLLSLLCYLVFLCRHSSHRGVFLSVTILIIYLLMGEMHMVDTVTWHKMRGAQMIVAMKAVSLGFD
 LDRGEVAVPSPVEFMGYLYFVGTIVFGPWISFHSYLQAVQGRPLSRRWLKKVARSLALALLCLVLSTCV
 GPYLPYFIPLDGDRLLRNKKRKARGTMVRWLRAYESAVSFHFSNYFVGFLESEATATLAGAGFTEEKDHL
 EWDLTVSRPLNVELPRSMVEVVTWNLPMSYWLNNYVFNALRLGTFSAVLVTYAAASALLHGF SFHLAAV
 LLSLAFITYVEHVLKRLAQILSACILSKRCLPDCSHRHRLGLGVRALNLLFGALAFHLSYLGSLFDVD
 VDDTTEEQGYGMAYTVHKWSELWASHWVTFGCWIFYRLIG

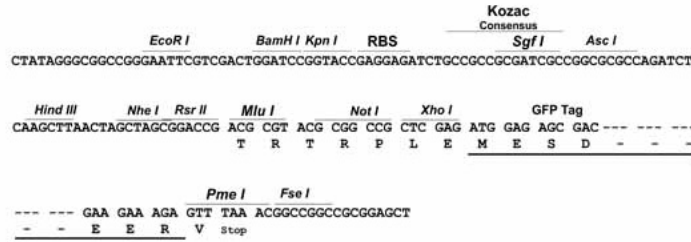
TRTRPLE - GFP Tag - V

Restriction Sites:

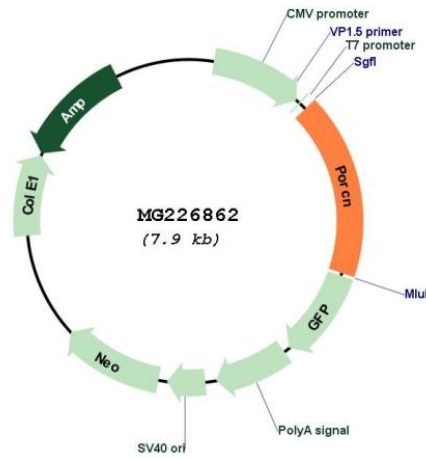
Sgfl-MluI

Cloning Scheme:

Cloning sites used for ORF Shutting:



Plasmid Map:



ACCN: NM_023638

ORF Size: 1383 bp

OTI Disclaimer: Due to the inherent nature of this plasmid, standard methods to replicate additional amounts of DNA in E. coli are highly likely to result in mutations and/or rearrangements. Therefore, OriGene does not guarantee the capability to replicate this plasmid DNA. Additional amounts of DNA can be purchased from OriGene with batch-specific, full-sequence verification at a reduced cost. Please contact our customer care team at custsupport@origene.com or by calling 301.340.3188 option 3 for pricing and delivery.

The molecular sequence of this clone aligns with the gene accession number as a point of reference only. However, individual transcript sequences of the same gene can differ through naturally occurring variations (e.g. polymorphisms), each with its own valid existence. This clone is substantially in agreement with the reference, but a complete review of all prevailing variants is recommended prior to use. [More info](#)

OTI Annotation: This clone was engineered to express the complete ORF with an expression tag. Expression varies depending on the nature of the gene.

Components: The ORF clone is ion-exchange column purified and shipped in a 2D barcoded Matrix tube containing 10ug of transfection-ready, dried plasmid DNA (reconstitute with 100 ul of water).

Reconstitution Method:

1. Centrifuge at 5,000xg for 5min.
2. Carefully open the tube and add 100ul of sterile water to dissolve the DNA.
3. Close the tube and incubate for 10 minutes at room temperature.
4. Briefly vortex the tube and then do a quick spin (less than 5000xg) to concentrate the liquid at the bottom.
5. Store the suspended plasmid at -20°C. The DNA is stable for at least one year from date of shipping when stored at -20°C.

RefSeq: [NM_023638.4](#)

RefSeq Size: 1896 bp

RefSeq ORF: 1386 bp

Locus ID: 53627

UniProt ID: [Q9J1J7](#)

Cytogenetics: X 3.7 cM

Gene Summary: Protein-serine O-palmitoleoyltransferase that acts as a key regulator of the Wnt signaling pathway by mediating the attachment of palmitoleate, a 16-carbon monounsaturated fatty acid (C16:1), to Wnt proteins. Serine palmitoleylation of WNT proteins is required for efficient binding to frizzled receptors.[UniProtKB/Swiss-Prot Function]