

Product datasheet for **MG226846**

Vav1 (NM_011691) Mouse Tagged ORF Clone

Product data:

Product Type:	Expression Plasmids
Product Name:	Vav1 (NM_011691) Mouse Tagged ORF Clone
Tag:	TurboGFP
Symbol:	Vav1
Synonyms:	Vav; vav-T
Mammalian Cell Selection:	Neomycin
Vector:	pCMV6-AC-GFP (PS100010)
E. coli Selection:	Ampicillin (100 ug/mL)



[View online »](#)

ORF Nucleotide Sequence:

>MG226846 representing NM_011691
 Red=Cloning site Blue=ORF Green=Tags(s)

TTTTGTAATACGACTCACTATAGGGCGGCCGGAATTCGTCGACTGGATCCGGTACCGAGGAGATCTGCC
 GCC**CGCATCGCC**

ATGGAGCTCTGGCGACAGTGCACCCACTGGCTGATCCAGTGTGCGGTGCTGCCTCCAGCCACCGTGTGA
 CCTGGGAGGGGGCCAGGTGTGTGAGCTGGCACAGGCAGTGCGGGACGGTGTCTCTTGTGCCAATTGCT
 TAACAACCTGTTCCCCAGGCCATTAATCTTCGCGAGGTTAACTTGCGGCCCCAGATGTCCAGTTCCTT
 TGTCTTAAGAACATTCGAACCTTCTGTCTACTTGTGTGAGAAGTTCGGCCTCAAGCGCAGTGAACCTCT
 TTGAGGCTTTTGACCTCTTCGATGTGCAGGACTTTGAAAGGTCACTACACCCTGTCTGCTGTGCATG
 GACACCCATTGCCAGAACAAAGGAATCATGCCCTTCCAACAGAGGACAGCGCTCTGAACGACGAAGAT
 ATTTACAGTGGCCTTTCAGACCAGATTGATGACACCGCAGAGGAAGACGAGGACCTTTATGACTGCGTGG
 AAAATGAGGAGGCAGAGGGGACGAGATCTACGAGGACCTAATGCGCTTGGAGTCGGTGCCTACGCCACC
 CAAGATGACAGAGTATGATAAGCGCTGCTGCTGCCTGCGGGAGATCCAGCAGACGGAGGAGAAGTATACA
 GACACACTGGGCTCCATCCAGCAGCACTTCATGAAGCCTCTGCAGCGATTCTTAAGCCTCAAGACATGG
 AGACCATCTTTGTCAACATTGAGGAGCTGTTCTCTGTGCATACCCACTTCTTAAAGGAACGAAGGATGC
 CCTGGCTGGCCCGGAGCAACAACACTGTATCAGGTCTTCATCAAGTACAAGGAGAGGTTCTGGTTTAT
 GGCCGTTATTGCAGTCAGGTGGAGTCAGCCAGCAAGCACTTGGATCAAGTGGCCACAGCAGGGAGGATG
 TGCAGATGAAGCTGGAGGAATGTTCTCAAAGAGCTAACAATGGCCGATTACCCCTACGGGATCTGCTGAT
 GGTACCTATGCAGCGGTGCTGAAGTACCACCTCCTTCTCCAGGAGCTAGTGAACACACACAGGATGCT
 ACAGAGAAGGAGAACCTGCGGTTGGCCCTGGACCCATGAGGGACCTGGCACAGTGCCTGAACGAGGTCA
 AGAGGGACAATGAAACCCACGCGCAGATCACAACTTTCAGCTGTCCATTGAGAACCTGGACCAGTCTCT
 GGCTAACTATGGCCGGCCCAAGATTGACGGTGAGCTCAAGATTACCTCAGTGGAGCGTCGCTCAAAGACA
 GACAGGTATGCCTTCTGCTGGACAAAGCACTGCTCATCTGTAACGCGCCGGGGACTCTTACGACCTCA
 AAGCCTCGGTGAACCTGCACAGCTTCCAAGTTCGAGATGACTCCTCCGGGAGCGAGACAACAAGAAGTG
 GAGCCATATGTTCTTCTGATTGAGGATCAAGGCGCCAGGGCTATGAGCTGTTCTTCAAGACTCGGGAG
 CTGAAGAAGAAGTGGATGGAACAGTTCGAAATGGCCATCTCCAACATTTACCCAGAGAATGCTACAGCCA
 ATGGGCATGATTTTCAGATGTTCTCCTTTGAGGAGACCACTTCTGCAAGGCCTGCCAGATGTTACTCAG
 AGGCACATTCTACCAGGGATATCGCTGTTACAGGTGCCGGCACCTGCACACAAGGAGTGTCTGGGGAGA
 GTCCCTCCTGTGGTCCGATGGCAAGATTTTCGAGGAACCATGAAGAAGGACAAGCTCCATCGAAGGG
 CCCAGGACAAGAAAAGGAATGAATTGGGTCTGCCTAAGATGGAAGTGTTCAGGAATACTATGGGATCCC
 TCTCCACCTGGAGCCTTTGGGCCATTTTACGGCTCAACCCTGGGGACATTGTGGAGCTCACTAAGGCA
 GAGGCTGAGCACAACCTGGTGGGAGGGAAGGAATACTGCTACAAATGAAGTCGGCTGGTTTCCCTGTAA
 GAGTGCATCCCTATGTCCACGGCCCTCCTCAGGACCTGTCTGTGCATCTCTGGTATGCGGGCCCTATGGA
 ACGAGCAGGCGCTGAGGGCATCTCACCAACCGTTCTGATGGGACCTATCTGGTGCAGGAGGGTGAAA
 GATACAGCGGAGTTCGCCATCAGCATTAAAGTATAACGTGGAGGTCAAGCATATTAATAATCATGACGTCAG
 AGGGTTGTACCGGATCACAGAGAAGAAGGCTTCCGGGGCCTTCTGAACTGGTAGAGTTTTATCAGCA
 GAATTCCTCAAAGATTGCTTCAAGTCTGTGGACACCACCTTGCAGTTTCTTATAAGGAACCTGAGAGG
 AGAGCCATCAGCAAGCCACCAGCTGGAAGCACCAAGTATTTTGGCACTGCCAAAGCCCGCTACGACTTCT
 GTGCCCGGACAGGTCGGAATGTCCTTAAGGAGGTGATATCATCAAGATCCTCAATAAGAAGGGACA
 GCAAGGCTGGTGGCGTGGGGAGATCTACGGCCGGATCGGCTGTTCCCTTCTAACTATGTGGAGGAAGAC
 TATTCCGAATATTGC

ACGCGTACGCGGCCGCTCGAG - GFP Tag - GTTTAA

Protein Sequence: >MG226846 representing NM_011691
Red=Cloning site Green=Tags(s)

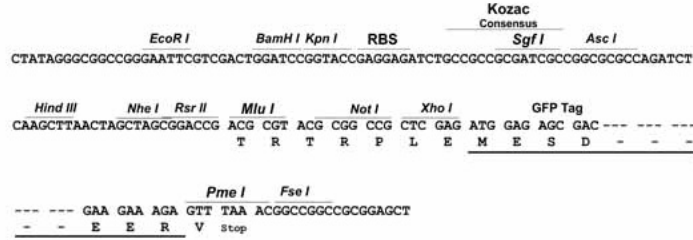
MELWRQCTHWLIQCRVLPSPHRVTWEGAQVCELAQALRDGVLLCQLLNLLPQAINLREVNLRPQMSQFL
CLKNIRTFLLSTCCEKFGFLKRSELF EAFDLFDVQDFGKVIYTL SALS WTP IAQNKGI MPFP TEDSALNDED
IYSGLSQIDDTAEDEDL YDCVENEEAEGDEIYEDLMRLESVPTPPKMTEYDKRCCCLREIQQTEEKYT
DTLGSIQQHFMKPLQRFLKPD METIFVNI EELFSVHTHFLKELKDALAGPGATTLYQVFIKYKERFLVY
GRYCSQVESASKHLDQVATAREDVQMKLEEC SQRANNGRFTLRDLLMVP MQRVLKYHLLLQELVKHTQDA
TEKENLRLALDAMRDLAQC VNEVKRDNETLRQITNFQLSIENLDQSLANYGRPKIDGELKITSVERRSKT
DRYAFLLDKALLICKRRGDSYDLKASVNLHSFQVRDSSGERDNKKWSHMFLLI EDQGAQGYELFFKTRE
LKKKWMEQFEMAI SNIYPENATANGHDFQMF SFEETT SCKACQMLLRGTFYQGYRCYRCRAHKECLGR
VPPCGRHGQDFAGTMKKDKLHRR AQDKKRNELGLPKMEVFQEYYGIPPPGAFGPFLRLNPGD IVELTKA
EAEHNWWEGRNTATNEVGWGFPCNRVHPYVHGPPQDLSVHLWYAGPMERAGAEGIL TNRSDGTYLVRQVVK
DTAEFAISIKYNVEVKHIKIMTSEGLYRITEKKA FRG LLELVEFYQNSLKDCFKSLDTTLQFPYKEPER
RAISKPPAGSTKYFGTAKARYDFCARDRELSLKEGDI IKILNKKGQQGWWRGEIYGRIGWFPSNYVEED
YSEYC

TRTRPLE - GFP Tag - V

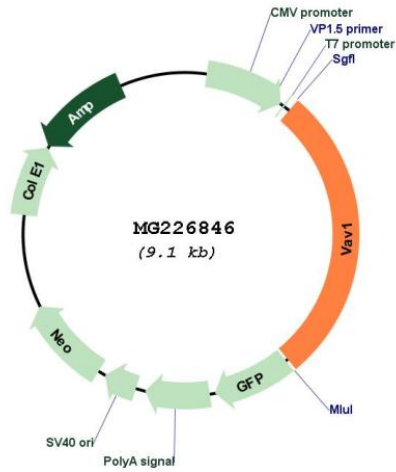
Restriction Sites: Sgfl-MluI

Cloning Scheme:

Cloning sites used for ORF Shutting:



Plasmid Map:



ACCN:	NM_011691
ORF Size:	2535 bp
OTI Disclaimer:	The molecular sequence of this clone aligns with the gene accession number as a point of reference only. However, individual transcript sequences of the same gene can differ through naturally occurring variations (e.g. polymorphisms), each with its own valid existence. This clone is substantially in agreement with the reference, but a complete review of all prevailing variants is recommended prior to use. More info
OTI Annotation:	This clone was engineered to express the complete ORF with an expression tag. Expression varies depending on the nature of the gene.
Components:	The ORF clone is ion-exchange column purified and shipped in a 2D barcoded Matrix tube containing 10ug of transfection-ready, dried plasmid DNA (reconstitute with 100 ul of water).
Reconstitution Method:	<ol style="list-style-type: none">1. Centrifuge at 5,000xg for 5min.2. Carefully open the tube and add 100ul of sterile water to dissolve the DNA.3. Close the tube and incubate for 10 minutes at room temperature.4. Briefly vortex the tube and then do a quick spin (less than 5000xg) to concentrate the liquid at the bottom.5. Store the suspended plasmid at -20°C. The DNA is stable for at least one year from date of shipping when stored at -20°C.
RefSeq:	NM_011691.4 , NP_035821.3
RefSeq Size:	4168 bp
RefSeq ORF:	2538 bp
Locus ID:	22324
UniProt ID:	P27870
Cytogenetics:	17 29.76 cM
Gene Summary:	Couples tyrosine kinase signals with the activation of the Rho/Rac GTPases, thus leading to cell differentiation and/or proliferation.[UniProtKB/Swiss-Prot Function]