

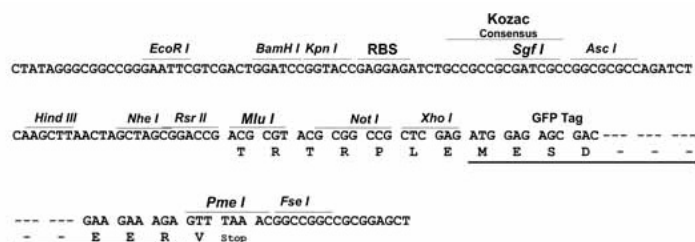
## Product datasheet for **MG226845**

### Cd19 (NM\_009844) Mouse Tagged ORF Clone

#### Product data:

Product Type:	Expression Plasmids
Product Name:	Cd19 (NM_009844) Mouse Tagged ORF Clone
Tag:	TurboGFP
Symbol:	Cd19
Synonyms:	AW495831
Mammalian Cell Selection:	Neomycin
Vector:	pCMV6-AC-GFP (PS100010)
E. coli Selection:	Ampicillin (100 ug/mL)
Restriction Sites:	SgfI-MluI
Cloning Scheme:	

Cloning sites used for ORF Shuttling:



ACCN:	NM_009844
ORF Size:	1641 bp



[View online »](#)

**OTI Disclaimer:** Due to the inherent nature of this plasmid, standard methods to replicate additional amounts of DNA in E. coli are highly likely to result in mutations and/or rearrangements. Therefore, OriGene does not guarantee the capability to replicate this plasmid DNA. Additional amounts of DNA can be purchased from OriGene with batch-specific, full-sequence verification at a reduced cost. Please contact our customer care team at [custsupport@origene.com](mailto:custsupport@origene.com) or by calling 301.340.3188 option 3 for pricing and delivery.

The molecular sequence of this clone aligns with the gene accession number as a point of reference only. However, individual transcript sequences of the same gene can differ through naturally occurring variations (e.g. polymorphisms), each with its own valid existence. This clone is substantially in agreement with the reference, but a complete review of all prevailing variants is recommended prior to use. [More info](#)

**OTI Annotation:** This clone was engineered to express the complete ORF with an expression tag. Expression varies depending on the nature of the gene.

**Components:** The ORF clone is ion-exchange column purified and shipped in a 2D barcoded Matrix tube containing 10ug of transfection-ready, dried plasmid DNA (reconstitute with 100 ul of water).

**Reconstitution Method:**

1. Centrifuge at 5,000xg for 5min.
2. Carefully open the tube and add 100ul of sterile water to dissolve the DNA.
3. Close the tube and incubate for 10 minutes at room temperature.
4. Briefly vortex the tube and then do a quick spin (less than 5000xg) to concentrate the liquid at the bottom.
5. Store the suspended plasmid at -20°C. The DNA is stable for at least one year from date of shipping when stored at -20°C.

**Note:** Plasmids are not sterile. For experiments where strict sterility is required, filtration with 0.22um filter is required.

**RefSeq:** [NM\\_009844.2](#), [NP\\_033974.2](#)

**RefSeq Size:** 2440 bp

**RefSeq ORF:** 1644 bp

**Locus ID:** 12478

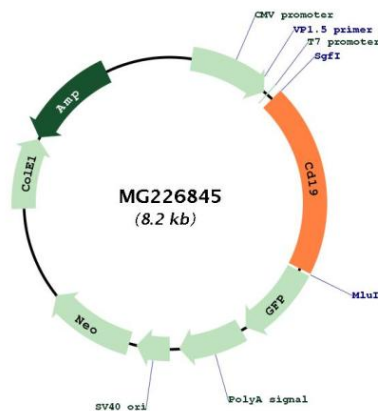
**UniProt ID:** [P25918](#)

**Cytogenetics:** 7 69.01 cM

## Gene Summary:

Functions as coreceptor for the B-cell antigen receptor complex (BCR) on B-lymphocytes. Decreases the threshold for activation of downstream signaling pathways and for triggering B-cell responses to antigens (By similarity). Activates signaling pathways that lead to the activation of phosphatidylinositol 3-kinase and the mobilization of intracellular  $Ca^{2+}$  stores (PubMed:9382888, PubMed:12387743, PubMed:20101619). Is not required for early steps during B cell differentiation in the blood marrow (PubMed:7542548, PubMed:7543183, PubMed:9317126). Required for normal differentiation of B-1 cells (PubMed:7542548, PubMed:7543183, PubMed:12387743). Required for normal B cell differentiation and proliferation in response to antigen challenges (PubMed:7542548, PubMed:9317126, PubMed:12387743). Required for normal levels of serum immunoglobulins, and for production of high-affinity antibodies in response to antigen challenge (PubMed:7542548, PubMed:7543183, PubMed:12387743).[UniProtKB/Swiss-Prot Function]

## Product images:



Circular map for MG226845