

Product datasheet for **MG226801**

Dlx6 (NM_010057) Mouse Tagged ORF Clone

Product data:

Product Type:	Expression Plasmids
Product Name:	Dlx6 (NM_010057) Mouse Tagged ORF Clone
Tag:	TurboGFP
Symbol:	Dlx6
Mammalian Cell Selection:	Neomycin
Vector:	pCMV6-AC-GFP (PS100010)
E. coli Selection:	Ampicillin (100 ug/mL)
ORF Nucleotide Sequence:	>MG226801 representing NM_010057 Red=Cloning site Blue=ORF Green=Tags(s)

TTTTGTAATACGACTCACTATAGGGCGGCCGGAATTCGTCGACTGGATCCGGTACCGAGGAGATCTGCC
GCC**CGATCGCC**

ATGATGACCATGACTACGATGGCTGACGGCTTGGAAAGGCCAGGACTCGTCCAAATCCGCCTTCATGGAGT
TCGGGCAGCAGCAACAGCAGCAGCAGCAACAACAGCAGCAGCAACAGCAGCAGCAGCAGCAACAGCA
GCCGCCGCCGCCACCGCCGCCGCCGCGCAGCCGCACTCGCAGCAGACCTCCCCGGCCATGGCAGGC
GCACATTACCCTCTGCACTGCTTGCACTCGGCCGCGGGCGGGCGGGCGGGCGGGCTCCACCATCACC
ACCACCAGCACCACCACCACGGCTCGCCCTACGCGTCGAGCGGAGGCAACTCTACAACCACCGATCGCT
CGCCGCCCTACCCCTACATGAGCCACTCGCAGCACAGCCCTTACCTCCAGTCTACCACAACAGCAGCGCG
GCCGCCAGACGCGGGGACGACACAGATCAACAAAAACGACAGTGATCGAAAACGGGAAATCAGGT
TCAACGGAAAGGGAAAAAGATTGGAAGCCTCGGACATTTATTCCAGCCTGCAGCTCCAGGCTTTAA
CCATCGCTTTCAGCAGACTCAATACCTGGCCCTTCCCAGAGAGCCGAACTGGCTGCTTCTTAGGACTG
ACACAAACACAGGTGAAGATATGGTTTTCAGAATAAGCGCTCTAAGTTTAAAGAAATTGCTGAAGCAGGGTA
GTAACCCACACGAGAGTGACCCCTCCCGGTTTCAGCAGCCCTGTACCACGATCACCAGCCCTGCCTCC
AGTGTGGGACGTTTCTGCCTCTGCCAAGGGCGTCAGTATGCCTCCAACAGCTACATGCCGGGTATTCA
CACTGGTATTCTCACCACACCAGGACACCATGCAGAGACCACAGATGATG

AG**CGGACCG**ACGCGTACGCGGCCGCTCGAG - GFP Tag - GTTTAA



[View online »](#)

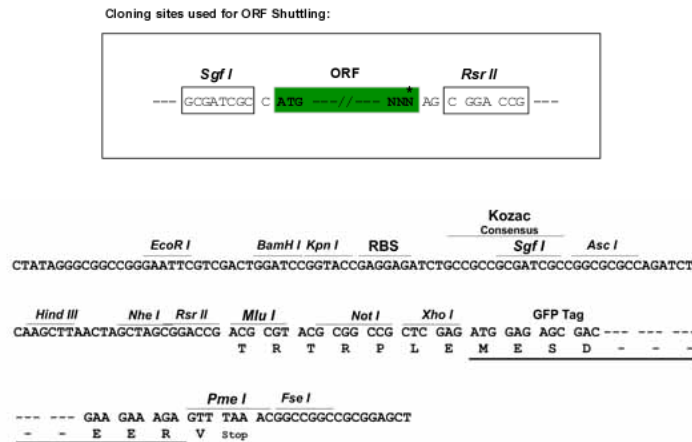
Protein Sequence: >MG226801 representing NM_010057
Red=Cloning site Green=Tags(s)

MMTMTTMADGLEGDSSKSAFMEFGQQQQQQQQQQQQQQQQQQPPPPPPPPPHSQQTSPAMAG
 AHYPLHCLHSAAGSHHHHHQHSHHHGSPYASSGGNSYNHRSLAAYPYMHSQHSPLYLSYHNSSA
 AAQTRGDDTDQKTTVIENGEIRFNGKGGKIRKPRTIYSSLQLQALNHRFQQTQYLALPERAELAASLGL
 TQTQVKIWFQNKRSKFKKLLKQGSNPHESDPLPGSAALSPRSPALPPVWDVVSASAKGVSMPNNSYMPGYS
 HWYSSPHQDTMQRPQMM

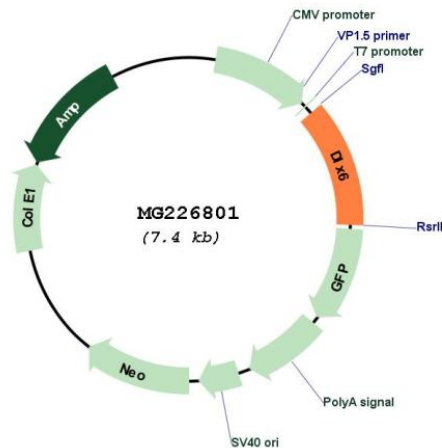
SGPTRRRLE - GFP Tag - V

Restriction Sites: SgfI-RsrII

Cloning Scheme:



Plasmid Map:



ACCN: NM_010057

ORF Size: 891 bp

OTI Disclaimer:	The molecular sequence of this clone aligns with the gene accession number as a point of reference only. However, individual transcript sequences of the same gene can differ through naturally occurring variations (e.g. polymorphisms), each with its own valid existence. This clone is substantially in agreement with the reference, but a complete review of all prevailing variants is recommended prior to use. More info
OTI Annotation:	This clone was engineered to express the complete ORF with an expression tag. Expression varies depending on the nature of the gene.
Components:	The ORF clone is ion-exchange column purified and shipped in a 2D barcoded Matrix tube containing 10ug of transfection-ready, dried plasmid DNA (reconstitute with 100 ul of water).
Reconstitution Method:	<ol style="list-style-type: none">1. Centrifuge at 5,000xg for 5min.2. Carefully open the tube and add 100ul of sterile water to dissolve the DNA.3. Close the tube and incubate for 10 minutes at room temperature.4. Briefly vortex the tube and then do a quick spin (less than 5000xg) to concentrate the liquid at the bottom.5. Store the suspended plasmid at -20°C. The DNA is stable for at least one year from date of shipping when stored at -20°C.
RefSeq:	NM_010057.2 , NP_034187.1
RefSeq Size:	1071 bp
RefSeq ORF:	894 bp
Locus ID:	13396
UniProt ID:	P70397
Cytogenetics:	6 2.83 cM