

Product datasheet for **MG226795**

Ptk2b (NM_172498) Mouse Tagged ORF Clone

Product data:

Product Type:	Expression Plasmids
Product Name:	Ptk2b (NM_172498) Mouse Tagged ORF Clone
Tag:	TurboGFP
Symbol:	Ptk2b
Synonyms:	CADTK; CAKB; CAKbeta; E430023O05Rik; FADK2; FAK2; PYK2; Raftk
Mammalian Cell Selection:	Neomycin
Vector:	pCMV6-AC-GFP (PS100010)
E. coli Selection:	Ampicillin (100 ug/mL)



[View online »](#)

ORF Nucleotide Sequence:

>MG226795 representing NM_172498
 Red=Cloning site Blue=ORF Green=Tags(s)

TTTTGTAATACGACTCACTATAGGGCGGCCGGGAATTCGTGACTGGATCCGGTACCGAGGAGATCTGCC
 GCC**CGCATCGCC**

ATGTCGGGGTGTCTGAGCCCTTGAAGCTGTAAAAGTGGGCACTTTACGCCGGCTGAGGGCCCCCAG
 AGCCCATGGTGGTGTACCAAGTGGATGTGGAGAAGGAAGACGTGCGCATCCTCAAGGTCTGCTTCTACAG
 CAACAGCTTCAACCCAGGGAAGAACTTCAAGCTTGTCAAATGCACAGTGCAGACAGAGATCCAGGAGATC
 ATCACCTCCATCCTCCTGAGTGGGCGAATAGGGCCCAACATCCAGCTGGCTGAATGCTATGGGCTGAGGC
 TGAAGCACATGAAGTGCAGACGAGATCCACTGGCTGCACCCACAGATGACCGTGGGCGAAGTGCAGGACAA
 GTATGAATGTCTACAGTGAAGCTGAGTGGAGGTATGACCTTCAAATCCGCTACTTGCCGGAAGACTTC
 ATGGAGAGCCTGAAAGAAGACAGGACCACATTGCTGTACTTTTATCAACAGCTCCGGAATGACTACATGC
 AACGCTACGCCAGCAAGGTCAGTGAAGGCATGGCTCTGCAGCTGGGCTGTCTGGAGCTCAGGAGATTCTT
 CAAGGACATGCCCAACAATGCAGTGGACAAAAAGTCCAACCTTGAAGTCTGGAAAAAGAAGTCCGCTCTG
 GACCTGTTTTTCCAAAGCAGATGCAGGAAAACTTAAAGCCCAAGCAGTTCGGAAAGATGATCCAGCAGA
 CCTTCCAGCAGTATGCATCACTCCGGGAGGAAGAGTGTGTGATGAAATCTTCAATACCTAGCGGGCTT
 TGCCAACATTGACCAGGAGACCTACCGCTGCGAACTCATTCAAGGATGGAACATTACTGTGGACCTGGTC
 ATCGGCCCTAAAGGCATCCGTCAGCTGACAAGTCAAGATACAAAGCCACCTGCCTGGCCGAGTTTAAAGC
 AGATCAAATCCATCAGGTGCCTCCCATTTGGAAGAGACCCAGGCAGTCTGCAGCTGGGCATCGAGGGTGC
 CCCCCAGTCTTGTCTATCAAACGTCGTCCTGGCAGAGGCTGAGAACATGGCTGACCTCATAGATGGC
 TACTGCAGGCTGCAAGGAGAACAATAAGGGCTCTCTCATCATGCATGCCAAGAAAGATGGTGAAGAGGA
 ACAGCTGCCTCAGATCCCACTAAACCTGGAGGCTCGCGGTCGCACCTCTCAGAAAGCTGCAGCAT
 AGAGTCAGACATCTATGCGGAGATTCCCGATGAGACCTGCGAAGACCAGGAGGTCCACAGTACGGTGT
 GCCCGTGAAGAAGTAGTTCTTAACCGCATTCTGGGTGAAGGCTTCTTTGGGGAGGTCTATGAAGGTGTCT
 ACACGAACCACAAAGGGGAAAAAATTAATGTGGCCGTCAAGACCTGTAAGAAAGACTGTACCCAGGACAA
 CAAGGAGAAGTTCATGAGTGAAGCAGTGCATGAAGAATCTTGACCACCTCACATCGTGAAGCTGATT
 GGCATCATTGAAGAGGAACCCACCTGGATTATCATGGAAGTGTATCCTTATGGGGAGCTGGGACACTACC
 TGGAAACGAAATAAAAACCTCCTGAAGGTACCCACTCTGGTCTGTACACCCTACAGATATGCAAAGCCAT
 GGCCTATCTGGAGAGCATCAACTGTGTGCACAGGGATATTGCTGTCCGGAACATCCTGGTGCCTCTCCT
 GAGTGTGTGAAGCTGGGGGACTTTGGGCTCTCCCGGTACATTGAGGACGAAGACTATTACAAAGCCTCTG
 TGACCCGCTACCCATCAAATGGATGTCCCCGAGTCCATCAACTTCCGCGCTTACAACCGCCAGTGA
 TGCTGGATGTTTGTGTATGCATGTGGGAGATCCTCAGCTTTGGGAAGCAGCCTTTCTTCTGGCTCGAA
 AATAAGGATGTATCGGAGTGTGGAGAAAGGGGACAGGCTGCCAAGCCGAACTCTGTCCGCTGTCC
 TTTACACACTCATGACTCGTGTGGGACTACGACCCAGTGACCGGCCCGCTTACGGAGCTTGTGTG
 CAGCCTCAGTGACATTTATCAGATGGAGAAGGACATTGCCATAGAGCAAGAAAGGAATGCTCGCTACCGA
 CCCCCAAAATATTGGAGCCTACTACCTTTCAGGAACCCCAAGCCAGCCGGCCCAAGTACAGAC
 CTCCTCCACAGACCAACCTGCTGGCTCCTAAGCTGCAGTTCAGGAGGAGGACTTCATCCGGCCAGTAG
 CCGAGAAGAGGCCAGCAGCTCTGGGAGCAGAGAAGATCAAGATGAAGCAGGTCCTAGAAGACAGCAG
 AAGCAGATGGTGAAGATTCCAGTGGCTGAGGGCAGAGGAAAGATGCTTGGACCTATAGTTTATATGA
 ATGACAAGTCCCACTGACTCCAGAGAAGGAGCCGGCTACACGGAGTTCACAGGGCCCCACAGAAACC
 ACCTCGGCTCGGTGCACAGTCCATTAGCCACAGCCAACCTGGACAGGACCGATGACCTCGTGTACCAC
 AATGTCATGACCTGGTGGAGGCTGTGTGGAAGTCAAGAACAAGCTTGGCCAGTTGCCCTGAGGACT
 ATGTGGTGGTGGTGAAGAACGTGGGGCTGAACCTGCGGAAGCTCATCGGCAGTGTGGACGATCTCTTGC
 CTCCTTCCGGCATCTTCGAGGACAGAGATTGAAGGGACCCAGAACTGCTCAACAAAGACCTGGCAGAG
 CTCATCAACAAGATGAAGTTGGCTCAGCAGAACCCGTGACGTCCCTGAGTGAAGGACTGCAAGCGCAGA
 TGCTCACAGCGTCCCATACCTGGCTGTGGATGCCAAGAACCTGTGGATGCTGTGGACCAAGCCAAGGT
 TGTGGCTAATCTGGCCACCCGCTGCAGAG

ACGCGTACGCGGCCGCTCGAG - GFP Tag - GTTTAA

Protein Sequence: >MG226795 representing NM_172498
Red=Cloning site Green=Tags(s)

```

MSGVSEPLSRVKVGTLLRPEGPPEPMVVVPVDVEKEDVRLKVKCFYSNSFNPGKNFKLVKCTVQTEIQEI
ITSILLSGRIGPNIQLAECYGLRLKHKMSDEIHWLHPQMTVGEVQDKYECLHVEAEWRYDLQIRYLPEDF
MESLKEDRTLLYFYQQLRNDYMQRYASKVSEGMALQLGCELELRRFFKDMPHNALDKKSNFELLEKEVGL
DLFFPKQMENLKPKQFRKMIQQTFQQYASLREEECVMKFFNTLAGFANIDQETYRCELIQGWNITVDLV
IGPKGIRQLTSQDTKPTCLAEFKQIKSIRCLPLEETQAVLQLGIEGAPQSLSIKTSLSLAEENMADLIDG
YCRQLQGEHKGSLIMHAKKDGEKRNLSLPQIPTLNLEARRSHLSESCSIESDIYAEIPDETLLRRPGGPQYGV
AREEVVLNRILGEGFFGEVYEGVYTNHKGEKINVAVKTCCKDCTQDNKEKFMSEAVIMKNLDHPHIVKLI
GIIEEPTWIIMELYPYGELGHYLERNKNSLKVPTLVLYTLQICKAMAYLESINCVHRDIAVRNIVASP
ECVKLGDFGLSRYIEDEDYKASVTRLPKIKWSPESINFRRTTASDVWMFAVCMWEILSFGKQPFWLE
NKDVIQVLEKGDRLPKPELCPVLYTLMTRCWDYDPSDRPRFTELVCSLSDIYQMEKDIAIEQERNARYR
PPKILEPTTFQEPKPSRPKYRPPQTNLLAPKLQFQEDFIRPSSREEAQQLEAEKIKMKQVLERQQ
KQMVEDSQWLREERCLDPMVYMNDKSPLTPEKEAGYTEFTGPPQKPPRLGAQSIQPTANLDRDLDLQVYH
NVMTLVEAVLELKNKLGQLPPEDYVVVVKVGLNLRKLGISVDDLLPSLPASSRTEIEGTQKLLNKDLAE
LINKMKLAQQNAVTSLESDCKRQMLTASHTLAVDAKNLLDAVDQAKVVANLAHPPE
    
```

TRTRPLE - GFP Tag - V

Restriction Sites: SgfI-MluI

Cloning Scheme:



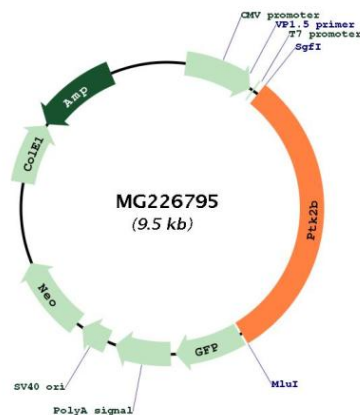
ACCN: NM_172498

ORF Size: 2901 bp

OTI Disclaimer:	The molecular sequence of this clone aligns with the gene accession number as a point of reference only. However, individual transcript sequences of the same gene can differ through naturally occurring variations (e.g. polymorphisms), each with its own valid existence. This clone is substantially in agreement with the reference, but a complete review of all prevailing variants is recommended prior to use. More info
OTI Annotation:	This clone was engineered to express the complete ORF with an expression tag. Expression varies depending on the nature of the gene.
Components:	The ORF clone is ion-exchange column purified and shipped in a 2D barcoded Matrix tube containing 10ug of transfection-ready, dried plasmid DNA (reconstitute with 100 ul of water).
Reconstitution Method:	<ol style="list-style-type: none">1. Centrifuge at 5,000xg for 5min.2. Carefully open the tube and add 100ul of sterile water to dissolve the DNA.3. Close the tube and incubate for 10 minutes at room temperature.4. Briefly vortex the tube and then do a quick spin (less than 5000xg) to concentrate the liquid at the bottom.5. Store the suspended plasmid at -20°C. The DNA is stable for at least one year from date of shipping when stored at -20°C.
RefSeq:	NM_172498.3 , NP_766086.2
RefSeq Size:	3925 bp
RefSeq ORF:	2904 bp
Locus ID:	19229
Cytogenetics:	14 34.36 cM

Gene Summary:

Non-receptor protein-tyrosine kinase that regulates reorganization of the actin cytoskeleton, cell polarization, cell migration, adhesion, spreading and bone remodeling. Plays a role in the regulation of the humoral immune response, and is required for normal levels of marginal B-cells in the spleen and normal migration of splenic B-cells. Required for normal macrophage polarization and migration towards sites of inflammation. Regulates cytoskeleton rearrangement and cell spreading in T-cells, and contributes to the regulation of T-cell responses. Promotes osteoclastic bone resorption; this requires both PTK2B/PYK2 and SRC. May inhibit differentiation and activity of osteoprogenitor cells. Functions in signaling downstream of integrin and collagen receptors, immune receptors, G-protein coupled receptors (GPCR), cytokine, chemokine and growth factor receptors, and mediates responses to cellular stress. Forms multisubunit signaling complexes with SRC and SRC family members upon activation; this leads to the phosphorylation of additional tyrosine residues, creating binding sites for scaffold proteins, effectors and substrates. Regulates numerous signaling pathways. Promotes activation of phosphatidylinositol 3-kinase and of the AKT1 signaling cascade. Promotes activation of NOS3. Regulates production of the cellular messenger cGMP. Promotes activation of the MAP kinase signaling cascade, including activation of MAPK1/ERK2, MAPK3/ERK1 and MAPK8/JNK1. Promotes activation of Rho family GTPases, such as RHOA and RAC1. Recruits the ubiquitin ligase MDM2 to P53/TP53 in the nucleus, and thereby regulates P53/TP53 activity, P53/TP53 ubiquitination and proteasomal degradation. Acts as a scaffold, binding to both PDPK1 and SRC, thereby allowing SRC to phosphorylate PDPK1 at 'Tyr-9', 'Tyr-373', and 'Tyr-376' (By similarity). Promotes phosphorylation of NMDA receptors by SRC family members, and thereby contributes to the regulation of NMDA receptor ion channel activity and intracellular Ca(2+) levels. May also regulate potassium ion transport by phosphorylation of potassium channel subunits. Phosphorylates SRC; this increases SRC kinase activity. Phosphorylates ASAP1, NPHP1, KCNA2 and SHC1. Promotes phosphorylation of ASAP2, RHOA and PXN; this requires both SRC and PTK2/PYK2 (By similarity). [UniProtKB/Swiss-Prot Function]

Product images:

Circular map for MG226795