

## Product datasheet for **MG226779**

### Cacna1c (NM\_001159535) Mouse Tagged ORF Clone

#### Product data:

**Product Type:** Expression Plasmids  
**Product Name:** Cacna1c (NM\_001159535) Mouse Tagged ORF Clone  
**Tag:** TurboGFP  
**Symbol:** Cacna1c  
**Synonyms:** Cav1.2; Cchl1a1; D930026N18Rik; MBC; MELC-CC  
**Mammalian Cell Selection:** Neomycin  
**Vector:** pCMV6-AC-GFP (PS100010)  
**E. coli Selection:** Ampicillin (100 ug/mL)  
**ORF Nucleotide Sequence:** >MG226779 representing NM\_001159535  
**Red=Cloning site Blue=ORF Green=Tags(s)**

TTTTGTAATACGACTCACTATAGGGCGGCCGGAATTCGTCGACTGGATCCGGTACCGAGGAGATCTGCC  
GCC**CGATCGCC**

ATGGTCAATGAAAACACGAGGATGTACGTTCCAGAGGAAAACCACCAAGTTCCAACATGGGAGCCAC  
GCCAGCTCATGCCAACATGAATGCCAATGCAGCTGCAGGACTTGCTCCCGAGCACATCCCTACTCCAGG  
GGCAGCACTGTCTGGCAGGCAGCCATCGATGCCGCCCGCAGGCCAAGCTCATGGGCAGTGTGGCAAC  
GCAACCATCTCTACCGTCAGTTCACACAGCGGAAGCGGCAGCAGTATGGGAAACCAAGAAGCAGGGGG  
GCACAACCGCCACACGGCCGCCCGGGCTCTGCTGTGTCTGACCCTGAAGAACCCTATCCGGAGGGCGTG  
CATAAGCATTGTTGAATGGAAACCATTTGAAATCATTATTTTACTGACTATTTTTGCCAATTGTGTGGCC  
TTAGCAATCTATATTCCTTTCCGGAAGACGACTCCAACGCCACCAACTCCAACCTGGAACGAGTGGAGT  
ATCTCTTCCCTCATATTTTTACCGTGGAAGCATTTTTAAAAGTAATTGCCTACGGACTTCTCTTCCACCC  
CAACGCTTACCTCCGCAATGGTTGGAATTTACTGGATTTTATAATCGTGGTTGTAGGGCTTTTTAGTGCA  
ATTTTAGAACAAGCAACCAAGCTGATGGGGCCAATGCTCTAGGAGGGAAAGGAGCTGGATTCGACGTGA  
AGGCAGTGAAGCGTTCCGCGTGTCTCCGTCCACTGCGGCTAGTGTCCGGAGTCCCAAGTCTCCAGGTGGT  
CCTGAACCTCCATCATCAAGGCCATGGTGCCTCTGCTGCACATGCCCTTCTTGTGCTCTTCGTATCATC  
ATTTATGCTATTATCGGCCTGGAGCTCTCATGGGAAAGATGCACAAGACCTGTACAACAGGAGGGCA  
TAATAGATGTTCCGGCAGAAGAGGATCCTTCCCTTGTGCTTTGGAGACAGGCCATGGGGCAGAGTGTCA  
GAACGGGACCGTGTGCAAAACCGGGTGGGATGGGCCCAAGCACGGCATACCAACTTCGACAACCTCGCC  
TTCGCCATGCTGACGGTGTTCAGTGTATCACCATGGAGGGCTGGACAGACGTGCTGACTGGATGCAAG  
ACGCTATGGGCTATGAGTTGCCCTGGGTGATTTTTGTCAGTCTGGTATCTTTGGATCCTTTTTCGTTCT  
AAATCTGGTTCTCGGTGTTTTGAGCGGGAGTTTTCCAAAGAGAGGGAGAAAAGCCAAAGCCAGAGGAGAT  
TTCCAGAAGCTTCGAGAGAAGCAGCAACTAGAAGAAGATCTCAAAGGCTACCTGGACTGGATCAGCCAGG  
CAGAAGACATTGACCCCGAGAACGAAGACGAGGGCATGGATGAAGACAAGCTCGAAACATGAGCATGCC  
CACAAGTGAGACTGAGTCTGTCAACACTGAAAACGTGGCTGGAGGTGACATCGAGGGAGAAAACCTGTGGA



[View online »](#)

GCCAGGCTTGCCCATCGGATCTCCAAATCCAAATTCAGCCGCTACTGGCGCAGGTGGAATCGATTCTGCA  
 GAAGAAAATGCCGTGCAGCAGTTAAGTCCAACGCTTCTACTGGCTCGTGATCTTCTGGTGTTCCTCAA  
 CACCCTCACCATTTGCCTCCGAACATTACAACCAGCCTCACTGGCTCACAGAAGTGAAGACACAGCCAAT  
 AAAGCCCTCCTGGCCCTTTTCACTGCAGAAATGCTCCTGAAGATGTACAGCCTGGGTCTGCAGGCCATTT  
 TTGTGTCCCTCTCAACCGCTTTGACTGTTTCATTGTGTGTGGGGCATCCTGGAGACCATCCTGGTGGA  
 GACGAAGATCATGTCTCCCTGGGCATCTGTGCTGAGATGTGTGCGGTGCTCAGGATCTTCAAGATC  
 ACCAGTACTGGAATTCCTTGACCAACCTGTGGCATCCTTGTGAACCTCAGTGCCTCCATTGCCCTCCC  
 TGCTGCTCCTCCTTCTTCCATCATCTTCTCCCTCCTGGGGATGCAGCTCTTGGAGGGAAGTT  
 CAACTTCGATGAGATGCAGACCCGTAGGAGCACGTTTCGATAAATTCCCGCAGTCTCTCCTACTGTGTTT  
 CAGATCCTGACCGGGGAGGACTGGAATTCGGTGTATGATGGGATCATGGCTTATGGCGGCCCTCTT  
 TTCCAGGGATGTTAGTCTGTATTTACTTCATCATCCTCTTCTCATCTGTGAAATTAATCCTACTGAATGT  
 GTTCTTGGCCATTGCGGTGGACAACCTGGCTGATGCGGAGAGCCTGACCTCAGCCAAAAGGAGGAGGAA  
 GAAGAGAAGGAGAGGAAGAAGCTGGCCAGGACTGCCAGCCAGAAAAGAAACAGGAGGTGATGGAGAAGC  
 CAGCCGTGGAGGAGCAAGAGGAGAAAATTGAACTGAAATCCATTACAGCCGATGGAGAATCCCACC  
 CACTACCAAGATCAACATGGATGACCTCCAGCCAGTAAAACGAGGATAAGAGTCCCCTCAACCCA  
 GACACTGCAGGGGAAGAGGATGAAGAGGAGCCGAGATGCTGTGGGGCCACGCCCCGGCCCTGTCTG  
 AGCTGCACCTTAAGAAAAGGCAGTTCCCATGCCGAAGCCAGTGCAATTTTTCATCTTACGCCAAAACA  
 CAGTTCCGCCTGCAGTGCCACCGTATTGTCAATGACACGATCTTACCACCTCATCCTTCTTCTTATT  
 CTGCTCAGCAGCATCTCTCTGGCTGCTGAGGACCCCGTCCAGCACACCTCCTTCAGGAACCATATCCTAG  
 GCAATGCAGACTATGTCTTCACTAGTATCTTTACATTAGAAAATTAATCCTAAGATGACTGCTTACGGGGC  
 TTTCTGCACAAGGGCTCTTCTGCCGAACTACTTCAATATCCTGGACCTGCTGGTGGTTAGCGTGTCC  
 CTCATCTCCTTTGGCATCCAGTCCAGCCGATCAACGTTGTGAAGATTTACGAGTGTGCGAGCTCTCA  
 GACCCCTGAGGGCCATCAACAGGGCCAAGGGCTAAAGCATGTGGTTCAAGTGCCTGTTTGGCCATCCG  
 GACCATCGGGAACATCGTAATTGTCACCACTCTGCTGCAGTTCATGTTCCGCTGCATTTGGGGTCCAGCTC  
 TTCAAGGGAAGCTCTATACCTGTTGCGATAGTTCTAAACAGACGAGGAGCAGAATGCAAGGGTAACTATA  
 TCACATACAAAGATGGAGAGTGCATACCCCATATCCAGCCTCGAAGCTGGGAGAACAGCAAGTTTGA  
 CTTTGACAATGTTTTGGCAGCCATGATGGCTCTTCCACGCTCTCCACCTTCGAAGGGTGGCCAGAGCTG  
 CTGTACCCTCCATTGACTCCCACAGAAAGACAAGGGCCCATCTACAACCTACCGTGTGGAGATCTCCA  
 TCTTCTTATCATCTATATCATCATCATTGCCTTCTTTCATGATGAACATCTTCGTGGGTTTCGTCTTGT  
 CACCTTCCAGGAGCAGGGGAACAAGAGTACAAGAAGTGTGAGCTGGACAAGAACCAGAGACAATGCGTG  
 GAATATGCCCTCAAGGCCGACCCTTGGCAAGGTACATCCCAAGAACCAGCACCAGTACAAGTGTGGT  
 ACGTGGTCAACTTACCTACTTCGAGTATCTGATGTTCTGTTCTCATCCTGCTCAACACCATCTGCCTGGC  
 CATGCAGCACTATGGCCAGAGCTGCCTCTTCAAAATCGCCATGAATATACTCAACATGCTTTTACCAGGC  
 CTCTTACAGTGGAGATGATCCTGAAGCTCATTGCCTTCAAACCAAGCACTATTTCTGTGATGCATGGA  
 ATACATTTGACGCCTTGATTGTTGTGGGTAGCATTGTTGATATAGCAATCACCGAGGTACACCCAGCTGA  
 ACATACCAATGCTCTCCCTCTATGAGTGCAGAGGAGAAGTCCCGCATCTCCATCACCTTCTTCCGCCTC  
 TTCCGGTTCATGCGCCTGGTGAAGCTGTGAGCCGCGGGGAAGGCATCCGAACCTGCTGTGGACCTTCA  
 TCAAGTCTTCCAGGCTCTGCCCTATGTGGCTCTTTTGAATGTGATGCTGTTCTTATCTATGCAGTGT  
 TGGGATGCAGGTGTTGGGAAGATTGCCCTGAATGACACCACAGAGATCAATCGGAACAACAATCCAG  
 ACGTTCCCCAGGCTGTGTTACTGCTGTTCAAGGTGTGCCACTGGAGAGGCTGGCAGGACATCATGCTGG  
 CCTGCATGCCAGGCAAGAAGTGTGCCCCAGAGTCTGAGCCAGCAACAGCACAGAAGGGGAGACCCCTG  
 TGGCAGCAGCTTGTGTCTTACTTTCATCAGCTTCTACATGCTCTGTGCCTTCTGATCATCAACCTC  
 TTTGTAGCTGTTATCATGGACAACCTTACTACCTGACTAGGGATTGGTCTATCCTCGGTCCCCATCACC  
 TGGATGAATCAAGAGAATCTGGGCCGAGTATGACCTGAAGCCAAGGGTGGATCAAACACTTGGATGT  
 GGTGACCTCCTCCGTCGAATTCAGCCCCACTGGGTTTTGGGAAATTGTGCTCACCCTGTGGCCTGC  
 AAACGCCTGGTGTCCATGAACATGCCTCTGAACAGCGATGGCACAGTCAATGTTCAATGCTACCCTGTTT  
 CCCTGTCAGGACAGCCCTGAGGATCAAAACAGAAGGAACTAGAGCAAGCCAATGAGGAGCTGCGGGC  
 CATCATCAAGAAAATCTGGAAGAGGACCAGCATGAAGCTGTTGGACCAGGTGGTGGCCCTGCAGCCGAT  
 GACGAGGTACAGTGGGCAAGTTCTATGCCACCTTCTGATACAAGAGTACTTCAGGAAATTCAGAAGC  
 GAAAAGAGCAGGGGCTGGTGGGCAAGCCCTCACAAAGGAATGCACTGTCCCTCCAGGCTGGCTTGGCCAC  
 CTTGCATGATATTGGCCTGAGATCCGGCGGGCCATCTCTGGGGATCTGACTGCTGAGGAGGAGTTGGAC  
 AAGGCTATGAAGGAGGCGGTGTCTGCTGCCAAGATGACATCTTTCAGGAGGGCTGGAGGCTGTTCCG

GCAACCATGTCACCTACTATCAGAGTGACAGCAGGGGCAACTTTCCTCAGACGTTTCGCCACTCAGCGCCC  
ACTGCACATCAACAAGACAGGGAACAACCAAGCTGACACTGAGTCACCGTCCCATGAGAAGCTGGTGGAC  
TCCACGTTACCCCCAGCAGCTACTCATCCACGGGCTCCAATGCCAACATCAACAATGCCAACAACTG  
CCCTGGGCGCTTCCCCATCCCGCTGGCTACTCCAGCACGGTCAGCACTGTGGAGGGCCATGGACCTCC  
CTTGTCCCCTGCTGTCCGAGTACAGGAGGCAGCATGGAAGCTCAGCTCTAAGAGGTGCCACTCCCAGAG  
AGCCAGGGAGCCACGGTGAATCAGGAGATATTTCCAGATGAGACCCGCAGCGTAAGGATGAGTGAAGAAG  
CCGAGTACTGCAGTGAGCCAGCCTGCTCTCCACAGATATGTTCTCCTACCAGGAAGATGAACACCGACA  
ACTGACCTGCCAGAGGAGGACAAGAGGGAGATCCAGCCATCTCCAAGAGGAGTTTCTTCGCTCTGCC  
TCTTAGGTGGAAGGCCTCCTTCCATCTGGAATGTCTAAAGCGACAAAAGGATCAAGGGGGAGACATCT  
CTCAGAAGACAGCCTTGCCCTTGATCTGGTTCATCATCAGGCATTGGCAGTGGCAGGCTTGAGCCCCCT  
CCTGCAGAGAAGCCATTCTCCTACCACATTCCCCAGGCCATGCCACACCCCCTGTCACTCCAGGCAGC  
CGGGGCAGACCCCTACGGCCATCCCTACCCTACGGCTGGAGGGGGCAGAGTCCAGCGAGAACTCAACA  
GCAGCTTCCATCCATCCACTGCAGCTCCTGGTCTGAGGAGACGACAGCCTGTAGTGGGAGCAGCAGCAT  
GGCCCGGAGAGCCCGCCGCTCCTCCTACCGTGCCAGCCAGGCTGGAGCTCCAGGGAGACAGTCCAT  
GGCAGTGCCAGCAGCCTGGTGAAGCGGTCTTGATTTTCAAGAGGACTGGGACAGTTTGCTCAAGATCCCA  
AGTTTATCGAGGTCACCAACCAGGAGCTGGCTGACGCCTGCGACATGACAATAGAGGAGATGGAGAACGC  
CGCAGACAACATCCTCAGTGGGGCGCCAGCAGAGCCCCAACGGCACCCCTTTACCTTTTGTGAACTGC  
AGGGACCCGGGGCAGGACAGGGCTGTGGTCCCAGAGGACGAGAGCTGCGCATATGCCCTGGGGCGAGGCC  
GGAGCGAGGAGCGCTCGCGGACAGCAGGTCCTACGTCAGCAACCTG

ACGCGTACGCGGCCGCTCGAG - GFP Tag - GTTTAA

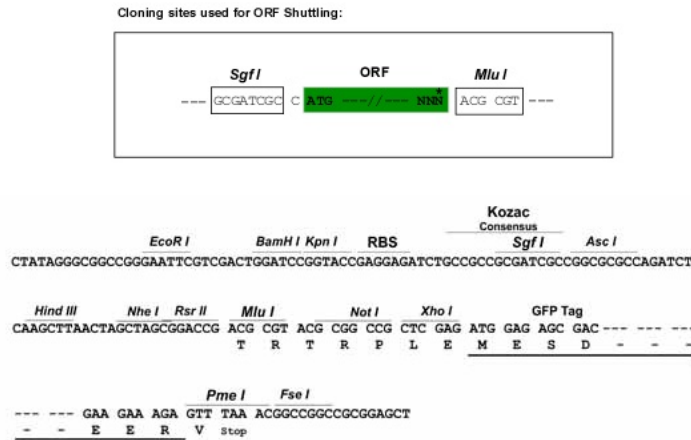
**Protein Sequence:** >MG226779 representing NM\_001159535  
 Red=Cloning site Green=Tags(s)

```
MV NENTRMYVPEENHQGSNYGSPRPAHANMNANAAAGL APEHIPTPGAALSWQAAIDAARQAKLMGSAGN
ATISTV SSTQRKRQY GPKKQGGTTATRPPRALLCLTLKNPIRRACISIVEWKPF EIIILLTIFANCVA
LAIYIPFPEDDSNATNSNLERVEYLFLLIIFTVEAFLKVIAYGLLFHPNAYLRNGWNLLDFIIVVGLFSA
ILEQATKADGANALGGKAGFDVKALRAFVLRPLRLVSGVPSLQVVLNSIIKAMVPLLHIALLVLFVII
IYAIIGLELFMGKMHKTCYNQEGIIDVPAEEDPSPCALETGHGRQCQNGTVCKPGWDGPKHGITNFDNFA
FAMLT VFCITMEGWTDVLYWMQDAMGYELPWYFVSLVIFGSFFVLNLVLGVLSGEFSKEREKAKARGD
FQKLRKQQL EEDLKG YLDWITQAEDIDPENEDEGMDKPRNMSMPTSETESVNTENVAGGDIEGENCG
ARLAHRISKSKFSRYWRRWNRFCRRKCAAVKSNVFWLVIFLVFLNTLTIASEHYNQPHWLTEVQDTAN
KALLALFTAEMLLKMYSLGLQAYFVSLFNRFDCFIVCGGILETILVETKIMSPLGISVLRVLRLLRIFKI
TRYWNSL SNLVA SLLNSVRSIASLLLLLFLFIIIFSLG MQLFGGKFNDEMQRTRSTFDNFPQSLLTVF
QILTGEDWNSVMYD GIMAYGGPSFPGMLVCIYFIIILFICGNYILLNVFLAIAVDNLADAESL TSAQKEE
EEKERKKLARTASPEKKQEVMEKPAVEESKEEKIELKSITADGESPTTKINMDDLQPSSENEKSPHNSP
DTAGEDEEEPEMPVGRPRPLSELHLKEKAVMPPEASAFFIFSPNNRFR LQCHRIVNDTIFTNLILFFI
LLSSISLAAEDPVQHTSFRNHILGNADYVFTSIFTLEIILKMTAYGAFLHKGSFCRNYFNILDLLVVSVS
LISFGIQSSA INVVKILRVLRLRPLRAINRAKGLKHVVQCVFVAIRTI GNIVIVITLLQMFACIGVQL
FKGKLYTCS DSSKQTEAECKGN YITYKDG EVDHPIIQPRSWENSKFDFDNVLAAMMALFTVSTFEGWPEL
LYRSIDSHTE DKGPIYNYRVEISIFFIIYIIIIAFFMMNIFVGFVIVTFQE QGEQEYKNCELDKNQRQCV
EYALKARPL RRYIPKNQH QYKVVWYVNSTYFEYLMFV LILLNTICLAMQHYGQSCLFKIAMNILNMLFTG
LFTVEMILKLI AFKPKHYFCDAWNTFDALIVVGSIVDIAITEVHPAEHTQCS PMSAEENSRSITFFRL
FRVMRLVKLLSRGEGIR TLLWTFIKSFQALPYVALLIVMLFFIYAVIGMQVFGKIALNDTTEINRNNNFQ
TFPQAVLLLFRCATGEAWQD IMLACMPGKKCAPESEPSNSTEGE TPCGSSF AVFYFISFYMLCAFLIINL
FVAVIMDNFDYLTRDWSILGPHHLDEFKRIWAEYDPEAKGR IKHLDVVTLLRRIQPPLGFGKLCPHRVAC
KRLVSMN MPLNSDGTVMFNATL FALVRTALRIKTEGNLEQANEELRAIIKKIWKRTSMKLLDQVVPAGD
DEVTVGK FYATFLIQEYFRKFKRKEQGLVGKPSQRNALSLQAGLRTLHDIGPEIRRAISGDLTAEELD
KAMKEAVSAA SEDDI FRRAGGLFGNHVY YQSDSRGNFPQTFATQRPLHINKTGNNQADTESPSHEKLV D
STFTPSSYSSTGSNANINNANTALGRFPHPAGYSSTVSTVEGHGPPLSPAVRVQEA AWKLSKRCHSRE
SQGATVNQE IFPDETRSVRMSEEA EYCSEPSLLSTDMFSYQE DEHRQLTCPEEDKREIQPSPKRSFLRSA
SLGRRASFHLECLKRQK DQGGDISQKTALPLHLVHHQALAVAGLSPLLQRSHSPTTFPRPCPTPPVTPGS
RGRPLRPIPTLRLEGAESSEKLNSSFPSIHCSSWSEETTACSGSSMARRARPVSLTVPSQAGAPGRQFH
GSASSLVEAVL ISEGLGQFAQDPK FIEVTTQELADACDMTIEEMENAADN ILSGGAQQSPNGTLLPFVNC
RDPGQDRAVPEDESCAYALGRGRSEALADRSYVSNL
```

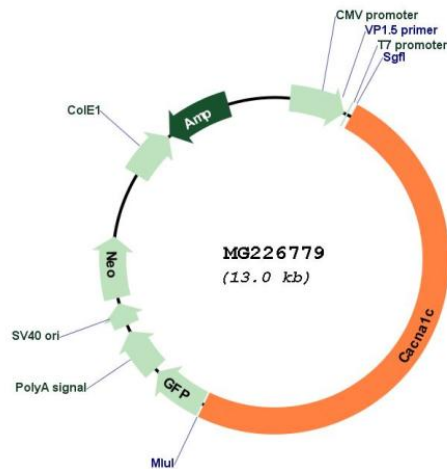
TRTRPLE - GFP Tag - V

**Restriction Sites:** Sgfl-MluI

Cloning Scheme:



Plasmid Map:



ACCN: NM\_001159535

ORF Size: 6411 bp

OTI Disclaimer: The molecular sequence of this clone aligns with the gene accession number as a point of reference only. However, individual transcript sequences of the same gene can differ through naturally occurring variations (e.g. polymorphisms), each with its own valid existence. This clone is substantially in agreement with the reference, but a complete review of all prevailing variants is recommended prior to use. [More info](#)

OTI Annotation: This clone was engineered to express the complete ORF with an expression tag. Expression varies depending on the nature of the gene.

<b>Components:</b>	The ORF clone is ion-exchange column purified and shipped in a 2D barcoded Matrix tube containing 10ug of transfection-ready, dried plasmid DNA (reconstitute with 100 ul of water).
<b>Reconstitution Method:</b>	<ol style="list-style-type: none"><li>1. Centrifuge at 5,000xg for 5min.</li><li>2. Carefully open the tube and add 100ul of sterile water to dissolve the DNA.</li><li>3. Close the tube and incubate for 10 minutes at room temperature.</li><li>4. Briefly vortex the tube and then do a quick spin (less than 5000xg) to concentrate the liquid at the bottom.</li><li>5. Store the suspended plasmid at -20°C. The DNA is stable for at least one year from date of shipping when stored at -20°C.</li></ol>
<b>RefSeq:</b>	<u>NM_001159535.1, NP_001153007.1</u>
<b>RefSeq Size:</b>	8224 bp
<b>RefSeq ORF:</b>	6414 bp
<b>Locus ID:</b>	12288
<b>Cytogenetics:</b>	6 55.86 cM
<b>Gene Summary:</b>	Pore-forming, alpha-1C subunit of the voltage-gated calcium channel that gives rise to L-type calcium currents (PubMed:14609949, PubMed:18586882, PubMed:21216955, PubMed:25368181, PubMed:28119464). Mediates influx of calcium ions into the cytoplasm, and thereby triggers calcium release from the sarcoplasm (By similarity). Plays an important role in excitation-contraction coupling in the heart. Required for normal heart development and normal regulation of heart rhythm (PubMed:21216955). Required for normal contraction of smooth muscle cells in blood vessels and in the intestine. Essential for normal blood pressure regulation via its role in the contraction of arterial smooth muscle cells (PubMed:14609949, PubMed:28119464). Long-lasting (L-type) calcium channels belong to the 'high-voltage activated' (HVA) group (Probable).[UniProtKB/Swiss-Prot Function]