

## Product datasheet for **MG226744**

### **Foxn1 (NM\_008238) Mouse Tagged ORF Clone**

#### **Product data:**

Product Type:	Expression Plasmids
Product Name:	Foxn1 (NM_008238) Mouse Tagged ORF Clone
Tag:	TurboGFP
Symbol:	Foxn1
Synonyms:	D11Bhm185e; Fkh19; HFH-11; Hfh11; nu; nude; wh; Whn
Mammalian Cell Selection:	Neomycin
Vector:	pCMV6-AC-GFP (PS100010)
E. coli Selection:	Ampicillin (100 ug/mL)



[View online »](#)

**ORF Nucleotide Sequence:**

>MG226744 representing NM\_008238  
 Red=Cloning site Blue=ORF Green=Tags(s)

TTTTGTAATACGACTCACTATAGGGCGGCCGGAATTCGTCGACTGGATCCGGTACCGAGGAGATCTGCC  
 GCC**CGCATCGCC**

ATGGTGTGCTACTCCCTCCGCAGTCTGACGTCACTTCCAGGCTCCACCCGACTGGAGGGCGAACCCC  
 AAGGGGACCTCATGCAGGCTCCGGGCTCCAGACTCCCCTGCCCCACAGAACCATGCTAACTTCAGCTG  
 CTCGTCGTTTGTGCTGACGGCCCTCCAGAGAGGACACCCTCACTGCCCCACACAGCCCCAGCATCGCA  
 TCTCCAGACCCAGAGCAGATCCAGGGCCACTGCACAGCCGGACCCGGCCCGGGCTCCTTCCGCCTTTCTC  
 CTTCAGAAAAGTATCCTGGCTTTGGCTTTGAGGAGGGCCAGCAGGCAGCCAGGGCGCTTCTCAAGGG  
 CAACCACATGCCTTCCACCCCTACAAGAGGCACTTCCATGAGGACATCTTCTGAGGCCAGACGGCC  
 ATGGCACTTGATGGACACTCCTTAAGACTCAGGGGGCACTGGAAGCCTTTGAGGAGATCCCTGTGGACA  
 TGGGGCATGCTGAGGCCCTCCTGCCTAGCTTCCAGCAGAGGCTTGGTGAATAAACTCCCTTACCCAG  
 CCAGGAACACAACCAAATTCGCAGGGGTCAAGGTCAAGCCCCAAGCTCTGGACAGTGGTCTCT  
 GGGATGTACTGCTACCAGCCTCCCTTGCAACATATGACTGTTCTTCTCAGCCTGCCTCCATCAGTACT  
 CCCCAGGTGGAGGCAGCTACCCTGTGCCCTACCTGGGCTCACCTCACTATCCCTATCAGAGGATTGCACC  
 CCAGGCCAACGCCGAAGGTCAACAGCCACTCTTCCAAAGCCCATCTACTCTTACAGCATCCTCATCTTC  
 ATGGCCCTTAAGAACAGTAAGACCGGAAGCCTTCCAGTCACTGAAATCTACAATTCATGACGGAGCACT  
 TCCCTTACTTCAAGACTGCTCCTGATGGCTGGAAGAATCTGTTCCGCATAACCTGTCCCTCAACAAGTG  
 CTTTGAGAAGGTGGAGAATAAATCCGGAAGTTCCTCTCGAAAGGGCTGTCTGTGGCCCTCAATCCTTCC  
 AAAATCGACAAGATGCAGGAAGAACTGCAGAAGTGAAGAGGAAAGACCCATTGCTGTGCCAAAAGCA  
 TGGCCAAACCAGAAGAGCTGGACAGCCTCATTGGAGACAAAAGGGAAAACTGGGCTCTCCGCTGCTGGG  
 CTGTCCACCCCTGGGCTGGCAGGCCAGGTCCTATCCGCCCCATGGCACCATCAGCTGGTCTTTCCAG  
 CCTCTGCACCCAATGCATCCAGCTCCAGGCCCATGCCTGGCAAGAACCCTGCAGGACCTACTGGGTG  
 GCCATGCTCCCTCCTGCTATGGGCAGACCTACCCACACCTTTCCCCAGCCTGGCCCTTCTGGACACCA  
 GCAGCCATTGTTCCACAGCCAGATGGGCATCTTGAAGTGCAGGCCAGCCAGGCACCCCCAGGACTCA  
 CCTTACTGCCACACACCACCCAGCCACGGTCCCAAGCTGATGGCTGAGCCTTCTCAGCCAGGACCA  
 TGCACGATACTTACTGCCAGATGGAGACCTTGGGACTGACCTGGATGCTATCAACCTTCTCTCACTGA  
 CTTGACTTCCAGGAAATCTGTGGGAGCAGCTGAAGGATGACAGCTTGGCCCTGGACCCCTCGTATTG  
 TGACCTCGTCGCCGACGTCATCTCCATGTTGCCACCCACCAGCAGCCATTGCTTCCCCCAGGGC  
 CTTGCTGGCAGAAACAGGCAATGAGGCAGGTGAAGTGGCACCTCCAGGCAGCGGGCTCCGGTGTCTCT  
 GGGAGACATGCACCTCAGCACTCTACTCCGCCTTTGTGGAAGTGGAGTCCACGCCCTCTCAGCAGCT  
 GCCGGCCCTGCCGTGTACCTCAGTCCCGCTCAAAGCCATTGGCTCTGGCT

**ACGCGT**ACGCGGCCGCTCGAG - GFP Tag - GTTTAA

**Protein Sequence:**

>MG226744 representing NM\_008238  
 Red=Cloning site Green=Tags(s)

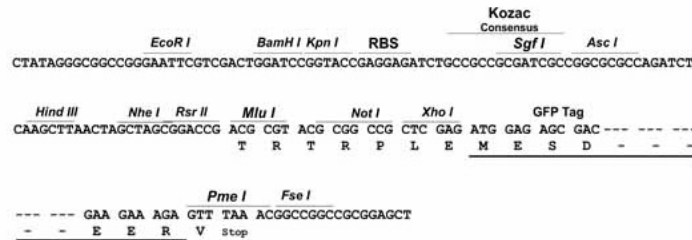
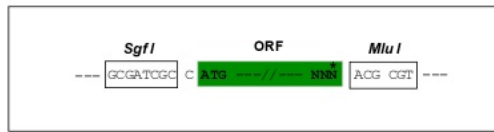
MVSLPPQSDVTLPGSTRLEGEPQDLMQAPGLPDSPAPQNHANFSCSSFVPDGPPTPSLPPHSPSIA  
 SPDPEQIQGHCTAGPGPGSFRLSPSEKYPGFGFEEGPAGSPGRFLKGNHMPFHPYKRHFHEDIFSEAQTA  
 MALDGHFSFKTQGALEAFEEIPVDMGDAEAFLPSPFAEAWCNKLPYPSQEHNQILQGSEVKVKPQALDSGP  
 GMYCYQPPLQHMYCSSQPAFHQYSPGGGYPVPYLGSPHYPYQRIAPQANAEGHQPLFPKPIYSYSILIF  
 MALKNSKTGSLPVSEIYNFMTEHFYFKTAPDGWKNVSRHNLNLNCKFEKVENKSGSSSRKGLWALNPS  
 KIDKMQEELQKWKRKDPIAVRKSMAKPEELDSLIGDKREKLGSPLLGCPPPGLAGPGPIRPMAPSAGLSQ  
 PLHPMHPAPGMPGKNPLQDLLGGHAPSCYQTYPHLSPSLAPSGHQPLFPQPDGHLELQAQPGTPQDS  
 PLPAHTPPSHGAKLMAEPSSARTMHDLLPDGDLGTDLDAINPSLTDFFDFQGNLWEQLKDDSLALDPLVL  
 VTSSPTSSSMLPPPPAAHCFPPGPCLAETGNEAGELAPPGGSGGALGDMHLSTLYSAFVELESTPSSAA  
 AGPAVYLSPGSKPLALA

**TRTRPLE** - GFP Tag - V

Restriction Sites: SgfI-MluI

Cloning Scheme:

Cloning sites used for ORF Shutting:



ACCN: NM\_008238

ORF Size: 1941 bp

OTI Disclaimer: The molecular sequence of this clone aligns with the gene accession number as a point of reference only. However, individual transcript sequences of the same gene can differ through naturally occurring variations (e.g. polymorphisms), each with its own valid existence. This clone is substantially in agreement with the reference, but a complete review of all prevailing variants is recommended prior to use. [More info](#)

OTI Annotation: This clone was engineered to express the complete ORF with an expression tag. Expression varies depending on the nature of the gene.

Components: The ORF clone is ion-exchange column purified and shipped in a 2D barcoded Matrix tube containing 10ug of transfection-ready, dried plasmid DNA (reconstitute with 100 ul of water).

Reconstitution Method:

1. Centrifuge at 5,000xg for 5min.
2. Carefully open the tube and add 100ul of sterile water to dissolve the DNA.
3. Close the tube and incubate for 10 minutes at room temperature.
4. Briefly vortex the tube and then do a quick spin (less than 5000xg) to concentrate the liquid at the bottom.
5. Store the suspended plasmid at -20°C. The DNA is stable for at least one year from date of shipping when stored at -20°C.

RefSeq: [NM\\_008238.1](#), [NP\\_032264.1](#)

RefSeq Size: 3273 bp

RefSeq ORF: 1947 bp

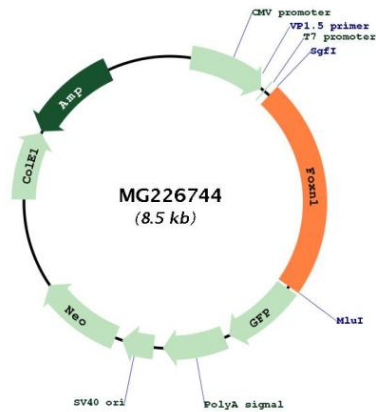
Locus ID: 15218

UniProt ID: [Q61575](#)

**Cytogenetics:** 11 46.74 cM

**Gene Summary:** The protein encoded by this gene is part of the forkhead family or "winged-helix" transcription factors that are important in developmental processes, immune system regulation, metabolism, cancer and aging. This gene family has over 100 members, subdivided into classes (A-Q) based on phylogeny. The encoded protein is proposed to regulate development of the thymus and differentiation of keratinocytes. Mutations in this gene cause severe primary T-cell immunodeficiency and congenital alopecia. In mouse mutations of this gene underlie the phenotype of the nude mouse, which has been widely used as a model system in oncology, immunology, dermatology, and transplantation studies. In humans mutations in this gene have been correlated with T-cell immunodeficiency, the skin disorder congenital alopecia, and nail dystrophy. Alternative splicing results in multiple transcript variants that encode different protein isoforms. [provided by RefSeq, Apr 2013]

**Product images:**



Circular map for MG226744