

Product datasheet for **MG226742**

Kcna3 (NM_008418) Mouse Tagged ORF Clone

Product data:

Product Type:	Expression Plasmids
Product Name:	Kcna3 (NM_008418) Mouse Tagged ORF Clone
Tag:	TurboGFP
Symbol:	Kcna3
Synonyms:	Kca1-3; Kv1.3; Mk-3
Mammalian Cell Selection:	Neomycin
Vector:	pCMV6-AC-GFP (PS100010)
E. coli Selection:	Ampicillin (100 ug/mL)



[View online »](#)

ORF Nucleotide Sequence:

>MG226742 representing NM_008418
 Red=Cloning site Blue=ORF Green=Tags(s)

TTTTGTAATACGACTCACTATAGGGCGGCCGGGAATTCGTCGACTGGATCCGGTACCGAGGAGATCTGCC
 GCC**CGGATCGCC**

ATGACCGTGGTGCCCGGGGACCCTGCTGGAGCCAGAGCGCGGGAGGCGGTGGCGGGGACCCGCTC
 AGGGAGGCTGTGGCAGTGGCGGGCGGTGGCGGCTGCGACCGCTACGAGCCACTGCCACCGCGCTGCC
 CGCCGCGGGGAGCAAGATTGCTGCGGGCAGCGTGTGGTCAACATCTCTGGGCTGCGCTTCGAGACG
 CAGCTCAAGACCCTCTGCCAGTCCCGGAGACTGCTGGGCGACCCCAAGCGGCGCATGCGGTACTTTG
 ACCCACTCCGCAATGAGTACTTCTCGACCGCAACCGACCCAGCTTCGACGCCATCCTCTACTACTACCA
 GTCCGGGGGCGCATTGCGCGCCGGTCAACGTGCCCATCGACATCTTCTCGAGGAGATCCGCTTTTAC
 CAGCTGGTGAGGAGCCATGGAAAAGTCCGTGAGGATGAGGGCTTCTGCGGGAGGAGGAGCGACCCC
 TGCCCCCGGTGACTCCAGCGCCAGGTGGTGTCTTTCGAATATCCGGAGAGCTCCGGGCGGCCCCG
 GGGCATTGCCATTGTGTGCTGCTGGTATTCTCATCTCCATTGTCATCTTCTGCTTGGAGACGCTTCCC
 GAGTTTCGCGATGAGAAAGACTATCCCGCTCCCGTTCGAGGAGCTGTTTGGAGCTGCCAAACAAGCA
 CGTCGGGGGCCCCCTTCTGGAGCCTCCAGCTTCTCGGACCCCTTCTCGTGGTGGAGACCTTGTGCATCAT
 CTGGTTCTCCTTTGAGCTTCTGGTGCAGTCTTTGCTTGGCCAGTAAAGCCACCTTCTCCAGAAATATC
 ATGAACCTGATAGACATTGTGGCCATCATTCTTATTTTACTCTGGGCACTGAGCTGGCTGAACGAC
 AAGGTAATGGGCAGCAGGCCATGTCGCTGGCCATCCTAAGAGTCAATCCGCTAGTAAGGGTTTTCCGCAT
 CTTCAAGCTCTCCCGCATTCTAAGGGGCTGCAGATCCTAGGACAGACGCTGAAGGCTCCATGCGGGAG
 CTGGGGCTGCTCATATTCTTCTTCTTATTGGGGTCACTCTTCTCCAGTGCAGTCTACTTTGCTGAGG
 CAGACGACCCCTTCTCGGGTTTTAACAGTATCCCGGATGCCTTCTGGTGGGCACTAGTAACCATGACA
 TGTGGTTATGGTGATATGCACCCAGTACCATAGGAGGCAAGATTGTGGGCTCTCTTTGTGCCATCGCA
 GGTGTCTTGACCATTGCATTGCCAGTTCCTGTGATTGTTTCCAACCTCAACTACTTCTACCACCGGAGA
 CAGAAGGGGAAGAGCAAGCCAGTACATGCACGTGGGAGTGGCAGCACCTCTCCTTCTCAGCCGAGGA
 GCTCCGAAAAGCCCGGAGTAACCTCACTCTGAGTAAGTCCGAGTATATGGTGATCGAAGAGGGGGTATG
 AACACAGCGCTTCCCGCAGACCCCTTCAAACGGGCAACTCCACAGCCACTTGCACCACGAACAATA
 ACCCAACTCTGTGTCAACATCAAGAAGATATCACTGATGTC

ACGCGTACGCGGCCGCTCGAG - GFP Tag - GTTTAA

Protein Sequence:

>MG226742 representing NM_008418
 Red=Cloning site Green=Tags(s)

MTVVPGDHLLLEPEAAGGGGGDPPQGGCGSGGGGGCDRYEPLPPALPAAGEQDCCGERVINISGLRFET
 QLKTLQCQFPETLLGDPKRRMRYFDPLRNEYFFDRNRPSFDAILYYYQSGGRIRRPVNPIDIFSEIRFY
 QLGEEAMEKFREDEGFLREEERPLPRRDFQRQVWLLFEYPESSGPARGIAIVSVLVILISIVIFCLETLP
 EFRDEKDYPAASPQDVFEAANNSTSGAPSGASSFSDPFFVETLCIIWFSFELLVRFACPSKATFSRNI
 MNLIDIVAIIIPYFITLGTLEAERQNGQQAMSLAILRVIRLVRFRIKLSRHSKGLQILGQTLKASMRE
 LGLLIFFLFIGVILFSSAVYFAEADDPSSGFNSIPDAFWAVVTMTTVGYDMHPVTIGGKIVGSLCAIA
 GVLTIALPVPVIVSNFNFYHRETEGEEQAQYMHVGSQHLSSSAEELRKARSNSTLSKSEYMVIEEGM
 NHSAFPQTPFKTGNSTATCTNNPNNSCVNIKKIFTDV

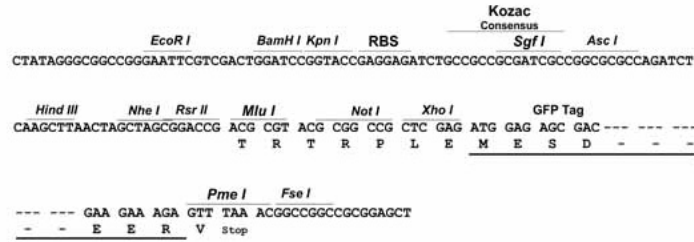
TRTRPLE - GFP Tag - V

Restriction Sites:

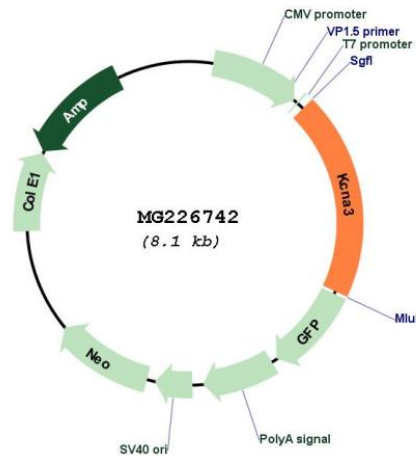
Sgfl-Mlul

Cloning Scheme:

Cloning sites used for ORF Shutting:



Plasmid Map:



ACCN:	NM_008418
ORF Size:	1584 bp
OTI Disclaimer:	The molecular sequence of this clone aligns with the gene accession number as a point of reference only. However, individual transcript sequences of the same gene can differ through naturally occurring variations (e.g. polymorphisms), each with its own valid existence. This clone is substantially in agreement with the reference, but a complete review of all prevailing variants is recommended prior to use. More info
OTI Annotation:	This clone was engineered to express the complete ORF with an expression tag. Expression varies depending on the nature of the gene.
Components:	The ORF clone is ion-exchange column purified and shipped in a 2D barcoded Matrix tube containing 10ug of transfection-ready, dried plasmid DNA (reconstitute with 100 ul of water).
Reconstitution Method:	<ol style="list-style-type: none">1. Centrifuge at 5,000xg for 5min.2. Carefully open the tube and add 100ul of sterile water to dissolve the DNA.3. Close the tube and incubate for 10 minutes at room temperature.4. Briefly vortex the tube and then do a quick spin (less than 5000xg) to concentrate the liquid at the bottom.5. Store the suspended plasmid at -20°C. The DNA is stable for at least one year from date of shipping when stored at -20°C.
RefSeq:	NM_008418.2 , NP_032444.2
RefSeq Size:	1968 bp
RefSeq ORF:	1587 bp
Locus ID:	16491
UniProt ID:	P16390
Cytogenetics:	3 46.59 cM
Gene Summary:	Mediates the voltage-dependent potassium ion permeability of excitable membranes. Assuming opened or closed conformations in response to the voltage difference across the membrane, the protein forms a potassium-selective channel through which potassium ions may pass in accordance with their electrochemical gradient.[UniProtKB/Swiss-Prot Function]