

## Product datasheet for **MG226727**

### **Ctnnd1 (NM\_001085453) Mouse Tagged ORF Clone**

#### **Product data:**

Product Type:	Expression Plasmids
Product Name:	Ctnnd1 (NM_001085453) Mouse Tagged ORF Clone
Tag:	TurboGFP
Symbol:	Ctnnd1
Synonyms:	AA409437; AU019353; Catns; Ctnnd; mKIAA0384; P120
Mammalian Cell Selection:	Neomycin
Vector:	pCMV6-AC-GFP (PS100010)
E. coli Selection:	Ampicillin (100 ug/mL)



[View online »](#)

**ORF Nucleotide Sequence:**

>MG226727 representing NM\_001085453  
 Red=Cloning site Blue=ORF Green=Tags(s)

TTTTGTAATACGACTCACTATAGGGCGGCCGGAATTCGTCGACTGGATCCGGTACCGAGGAGATCTGCC  
 GCC**CGGATCGCC**

ATGGACGACTCAGAGGTGGAGTCGACCGCCAGCATCTTGGCCTCTGTGAAAGAACAAGAGGCCAGTTTG  
 AGAAGCTGACCCGGGCGCTGGAAGAGGAGCGGCCATGTCTCGGCGCAACTGGAACGCGTCCGGGTCTC  
 ACCACAAGATGCCAACTCACTCATGGCCAAATGGCACCCCTCACTCGTCGGCATCAGAACGGCCGTTTGTG  
 GGCGATGCTGACCTTGAGAGACAGAAATTTTCAGATCTGAAACTCAACGGACCCAGGATCACAACCACC  
 TTCTGTACAGCACTATCCCAGGATGCAGGAGCCAGGACAGATTGTGAAACCTACACCGAGGAGGACCC  
 TGAAGGAGCCATGTCTGTTGTTTCTGTGGAGACCACAGATGATGGGACCACTAGACGCACGGAGACCACA  
 GTCAAAAAAGTTGTAAGACAATGACAACCTCGGACAGTACAGCCTGTCCCATGGGGCCAGACGGGCTGC  
 CCGTGGACGCCTCAGCAGTCTCCAATACTATATCCAGACCTTGGGCCGTGATTTTCGAAAGATGGCAA  
 TGGGGGCCCTGGTCCCTATGTGGGGCAAGCGGCACTGCCACTTCTCCTAGGAACCTCCACTATCCTCCA  
 GATGGGTATGGCCGACACTATGAAGATGGTTATCCAGGTGGCAGTGACAACCTACGGCAGTCTGTCCCGGG  
 TGACCCGAATTGAGGAGCGGTATAGGCCAGCATGGAAGGCTACCGGGCACCCAGTAGACAAAGATGTCTA  
 TGGGCCCCAGCCCAGGTTGAGTAGGTGGAAGCAGTGTGGACCTGCATCGTTTTTCATCCTGAGCCTTAC  
 GGGCTAGAGGATGACCAGCGCAGCATGGGCTATGATGACCTCGATTACGGCATGATGTCTGATTATGGTA  
 CTGCCCGTCGGACAGGAACCCCTCGACCCTCGACGACGCCTCAGGAGCTATGAAGACATGATTGGTGA  
 AGAGGTGCCGCTGATCAGTACTATTGGGCTCCTTAGCTCAGCATGAGCGGGCAGTTTAGCAAGCTTG  
 GATAGTTTGGCAAAGGGAATGCCCCACCTTCAAACCTGGAGACAGCCTGAGCTGCCAGAGGTGATTGCCA  
 GTTAGGCTTCCGCTTGGATGCTGTTAAGTCCAATGCAGCTGCATACCTGCAGCACTTATGCTACCGCAA  
 TGACAAGGTGAAGACTGACGTGCGGAAGCTCAAGGGTATCCCGATATTGGTAGGATTGTTAGACCATCCC  
 AAAAAGGAAGTGACCTCGGAGCCTGTGGAGCTCTCAAGAATATCTCTTTTGGACGTGACCAAGATAACA  
 AGATCGCCATAAAAACTGTGATGGTGTCTGCTCTGGTCCGATTGCTCCGAAAGGCTCGTGATATGGA  
 CCTGACTGAAGTGATTACTGGAACCCTGTGGAATCTCTCATCCCATGATTCAATCAAAATGGAGATTGTG  
 GACCATGCGCTACATGCCTTGACAGATGAAGTTATCATTCCACATTTCTGGTTGGGAGAGAGAACCTAATG  
 AAGACTGTAAGCCACGGCATATTGAATGGGAGTCAGTGCTTACCAACACTGCTGGCTGCCTTCGGAACGT  
 AAGCTCAGAGAGGAGTGAAGCCCGGAGGAACTTCGGGAATGTGACGGCTTAGTTGATGCCCTCATTTTC  
 ATCGTTCAGGCAGAAATGGGCAGAAGGATTAGACAGTAAGCTTGTGGAGAATTGTGTTGCCCTCTCC  
 GGAACCTATCATACCAAGTTCATCGTGAATCCCACAGGCAGAGCGTTACCGAGGAGGCCCTCCTACTGT  
 GGCTAACAGTACTGGGCCACACGCTGCCAGTTGCTTTGGAGCCAAGAAGGGCAAAGGGAAAAAGCCTACA  
 GAGGATCCAGCAAATGATACAGTGGATTTCCCTAAAAGAAGTCTGCTCGAGGCTATGAACTCTTAT  
 TTCAGCCAGAAGTGGTGCGAATATACATTTCACTCCTTAAAGGAGAGCAAGACGCCTGCCATCTTAGAAGC  
 CTCGGCCGGAGCTATCCAGAACTGTGTGCTGGGCGTTGGACATATGGCAGATACATCCGCTCTGCTCTT  
 CGTCAGGAGAAGGCTCTCTGCCATAGCTGAGCTCCTTACGAGTGAGCATGAGCGAGTAGTAAAAGCTG  
 CTTCTGGGCACTGAGAAATCTGGCTGTGGATGCTCGGAACAAAGAGTTAATTGGCAAGCATGCTATTCC  
 TAACCTGGTAAAGAATCTGCCAGGAGTCAACAGAACTCCTCCTGGAATTTTTCTGAAGATACTGTGGTC  
 TCCATATTGAACACCATCAACGAAGTTATCGCTGAGAAGTTAGAAGCTGCCAAAAAGCTTCGAGAGACGC  
 AGGGTATTGAGAAGCTGGTGTGATCAACAATCAGGGAATCGTTCAGAAAAAGAAGTCCGGGCAGCAGC  
 TCTTGTCTGCAGACAATCTGGGCTATAAGGAGCTTCGGAAGCCACTGGAAAAAGAAGGATGGAAGAAA  
 TCAGACTTCCAGGTGAATCTAAACAATGCATCTAGAAGCCAGAGCAGCCATTCATATGATGATAGCACTC  
 TCCCCCTATTGACCGGAATCAAAAATCAGATAACAATTTCCACACTGAATGAGAGAGGAGACCACAA  
 CAGAACACTGGACCGATCTGGGGATCTGGGTGATATGGAACCATTGAAGGGAGCACCCCTGATGCAGAAG  
 ATT

AG**CGGACCG**ACGCGTACGCGGCCGCTCGAG - GFP Tag - GTTTAA

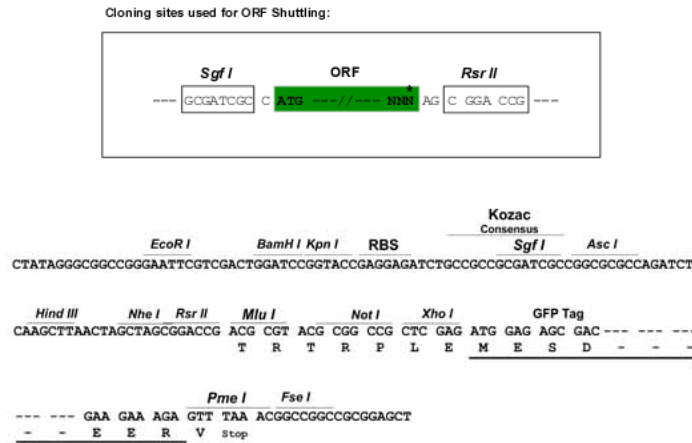
Protein Sequence: >MG226727 representing NM\_001085453  
 Red=Cloning site Green=Tags(s)

MDDSEVESTASILASVKEQEAQFEKLTRALEEERRHVSAQLERVRVSPQDANSLMANGTLTRRHQNGRFV  
 GDADLERQKFSCLKLNGPQDHNHLLYSTIPRMQEPGQIVETYTEDPEGAMSVSVVETDDGTTRRTETT  
 VKKVVKTMTTRTVQPVMPGPDGLPVDASAVSNNYIQTLGRDFRKNNGGPGPYVQGAGTATLPRNFHYPP  
 DGYGRHYEDGYPGGSDNYGSLSRVTRIEERYRPSMEGYRAPSRQDVYGPQPQVVRVGGSSVDLHRFHPEPY  
 GLEDDQRSMGYDDL DYGMMSDYGTARRTGTPSDPRRRLRSYEDMIGEEVPPDQYYWAPLAQHERGSLASL  
 DSLRKGMPPPSNWRQPELPEVIAMLGFRLDVAVKSNAAYLQHLCYRNDKVKT DVRKLGKIPILVGLLDHP  
 KKEVHLGACGALKNISFGRDQDNKIAIKNCDGVPALVRLLRKARDMDL TEVITGTLWNLSSHDSIKMEIV  
 DHALHAL TDEVIIPHSGWEREPNEDCKPRHIEWESVL TNTAGCLRNVSSESEARRKLRECDGLVDALIF  
 IVQAEIGQKSDSKLVENCVCLLRNLSYQVHREIPQAERYQEALPTVANSTGPHAASCFGAKKGGKPKPT  
 EDPANDTVDFPKRTSPARGYELLFQPEVVRIYISLLKESKTPAILEASAGAIQNL CAGRWTYGRYIRSAL  
 RQEKALSAIAELLTSEHERVVKAASGALRNLAVDARNKELIGKHAIPNLVKNLPGGQQNSSWNFS EDTVV  
 SILNTINEVIAENLEAAKKLRETQGIEKLV L INKSGNRSEKEVRAAALVLQTIWGYKELRKPLEKEGWKK  
 SDFQVNLNNASRSQSSHSYDDSTLPLIDRNQKSDNNYSTLNERGDHNRTLDRSGDLGDMEPLKGAPLMQK  
 I

SGPTRRRLE - GFP Tag - V

Restriction Sites: SgfI-RsrII

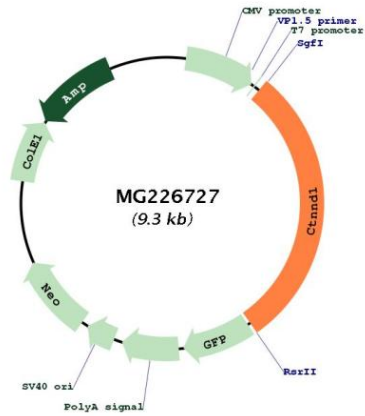
Cloning Scheme:



ACCN: NM\_001085453

<b>ORF Size:</b>	2733 bp
<b>OTI Disclaimer:</b>	The molecular sequence of this clone aligns with the gene accession number as a point of reference only. However, individual transcript sequences of the same gene can differ through naturally occurring variations (e.g. polymorphisms), each with its own valid existence. This clone is substantially in agreement with the reference, but a complete review of all prevailing variants is recommended prior to use. <a href="#">More info</a>
<b>OTI Annotation:</b>	This clone was engineered to express the complete ORF with an expression tag. Expression varies depending on the nature of the gene.
<b>Components:</b>	The ORF clone is ion-exchange column purified and shipped in a 2D barcoded Matrix tube containing 10ug of transfection-ready, dried plasmid DNA (reconstitute with 100 ul of water).
<b>Reconstitution Method:</b>	<ol style="list-style-type: none"><li>1. Centrifuge at 5,000xg for 5min.</li><li>2. Carefully open the tube and add 100ul of sterile water to dissolve the DNA.</li><li>3. Close the tube and incubate for 10 minutes at room temperature.</li><li>4. Briefly vortex the tube and then do a quick spin (less than 5000xg) to concentrate the liquid at the bottom.</li><li>5. Store the suspended plasmid at -20°C. The DNA is stable for at least one year from date of shipping when stored at -20°C.</li></ol>
<b>RefSeq:</b>	<a href="#">NM_001085453.2</a>
<b>RefSeq Size:</b>	5046 bp
<b>RefSeq ORF:</b>	2736 bp
<b>Locus ID:</b>	12388
<b>UniProt ID:</b>	<a href="#">P30999</a>
<b>Cytogenetics:</b>	2 49.45 cM
<b>Gene Summary:</b>	Binds to and inhibits the transcriptional repressor ZBTB33, which may lead to activation of target genes of the Wnt signaling pathway (By similarity). Associates with and regulates the cell adhesion properties of both C-, E- and N-cadherins, being critical for their surface stability. Implicated both in cell transformation by SRC and in ligand-induced receptor signaling through the EGF, PDGF, CSF-1 and ERBB2 receptors. Promotes GLIS2 C-terminal cleavage.[UniProtKB/Swiss-Prot Function]

Product images:



Circular map for MG226727