

Product datasheet for **MG226718**

Sgsh (NM_018822) Mouse Tagged ORF Clone

Product data:

Product Type:	Expression Plasmids
Product Name:	Sgsh (NM_018822) Mouse Tagged ORF Clone
Tag:	TurboGFP
Symbol:	Sgsh
Synonyms:	4632406A19Rik
Mammalian Cell Selection:	Neomycin
Vector:	pCMV6-AC-GFP (PS100010)
E. coli Selection:	Ampicillin (100 ug/mL)



[View online »](#)

ORF Nucleotide Sequence:

>MG226718 representing NM_018822
 Red=Cloning site Blue=ORF Green=Tags(s)

TTTTGTAATACGACTCACTATAGGGCGGCCGGAATTCGTCGACTGGATCCGGTACCGAGGAGATCTGCC
 GCC**CGGATCGCC**

ATGCACTGCCCGGACTGGCCTGCTGCACAATTCTGTTGGTCTGGGACTCTGCGGCGCGCACTCGCGCA
 ACGTGCTACTGATAGTTGCGGATGACGGAGGCTTTGAGAGTGGTGTATACAACAACACTGCCATCGCCAC
 CCCTCACCTGGATGCCCTGTCCCGCCACAGCCTTATCTCCGTAACGCCTTCACGCTGTGTCAGCAGCTGT
 TCCCCGAGCCGTGCCAGCCTCTCACCGCCTGCCCCAGCATCAGAATGGCATGTATGGGCTGCACCAGG
 ATGTGCATCACTTCAACTCTTTTGACAAGGTACAGAGCCTTCCGCTGCTGCTCAGCCAGGCCGGAGTGCG
 CACAGGCATCATTGGGAAGAAGCACGTGGGTCCGGAGACGGTGTATCCCTTTGACTTTGCATTACAGAG
 GAGAACAGCTCTGTGATGCAGGTGGGGCGGAACATCACTAGAATTAAGCAACTGGTCCAGAAATTTCTGC
 AGACTCAGGATGACAGGCCCTTCTTCTGTACGTGGCTTCCATGACCCGCACCGCTGTGGGCACTCTCA
 GCCCCAGTATGGAACCTTCTGTGAGAAGTTTGGCAATGGAGAGAGTGAATGGGGTACATCCAGACTGG
 ACACCCAGATCTACGACCTCAGGATGTGATGGTGCCTACTTTGTCCCGGACACACCAGCAGCCCGAG
 CAGACCTAGCTGCTCAGTACACCACCATCGGGCGGATGGACCAAGGGGTAGGTCTGGTGTCCAGGAGCT
 GCGAGGTGCTGGTGTGCTGAACGACACCCTCATCATCTTCACATCTGACAATGGTATCCCTTTCCCAGC
 GGCAGGACCAACCTGACTGGCCCGGTACAGCCGAGCCTTTGCTGGTGTCTCCAGAGACCCACAGC
 GCTGGGGCCAGGTGACGACGCCTACGTGAGCCTTCTAGACCTCACCCCTACCATCTGGACTGGTTCTC
 CATCCCGTACCCAGCTATGCCATCTTTGGCTCAAAGACGATCCAGCTCACAGGCCGATCCCTCTGCCG
 GCGCTGGAGGCAGAGCCCTTTGGGCCACTGTCTTCCAGCAGCCAGAGCCACCACGAGGTCACCATGTCTC
 ACCCGATGCGCTCGGTGTACCACAGAATTCCGCCTCATTACAACCTGAGCTTCAAGTGCCATTTCC
 CATCGACCAAGATTTCTATGTCTCGCCGACCTTCCAGGACTCCTGAACCGAACCACACAGGCCGCGCC
 ACGGGCTGGTACAAGGACCTCCACCGTTACTACTACCGGAACGCTGGGAACCTTACGACATCAGCCGGG
 ACCCTCGAGAGACACGGAACCTGGCCGCTGACCCAGACTTGGCTCAAGTGTGGAGATGCTGAAAGCTCA
 GCTTGTCAAGTGGCAATGGGAGACATGACCCCTGGGTGTGCGCCCGAGATGGAGTCTGGAGGAAAAG
 CTCACACCCAGTGCCGACCGCTTACAATGAACTC

ACGCGTACGCGGCCGCTCGAG - GFP Tag - GTTTAA

Protein Sequence:

>MG226718 representing NM_018822
 Red=Cloning site Green=Tags(s)

MHCPGLACCTILLVLGLCGAHSRNVLLIVADDGGFESGVYNNNTAIATPHLDALSRHSLIFRNAFTSVSSC
 SPSRASLLTGLPQHONGMYGLHQDVHFNFSDFKVQSLPLLLSQAGVRTGIIGKKHVGPEVYYPDFAFTE
 ENSSVMQVGRNITRIKQLVQKFLQTQDDRPFFLYVAFHDPHRCGHSQPQYGTFCFKFNGESGMGYIPDW
 TPQIYDPQDVMVPYFVPDTPAARADLAAQYTTIGRMDQGVGLVQLQELRGAGVLDNLTIIIFTSDNGIPFPS
 GRTNLYWPGTAPELLVSSPEHPQRWQVSDAYVSLDLTPTILDWFSIPYPSYAIIFGSKTIQLTGRSLLP
 ALEAEPLWATVFSQSHHEVTMSYPMRSVYHQNFRLIHNL SFKMPFPIDQDFYVSPTFQDLLNRTTGRP
 TGWYKDLHRYYYRERWELYDISRDPRETRNLAADPDLAQVLEMLKAQLVKWQWETHDPWVCAPDGVLEEK
 LTPQCRPLHNEL

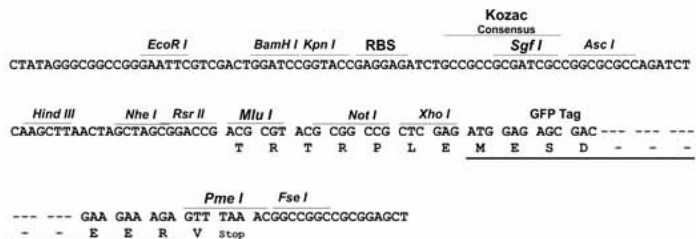
TRTRPLE - GFP Tag - V

Restriction Sites:

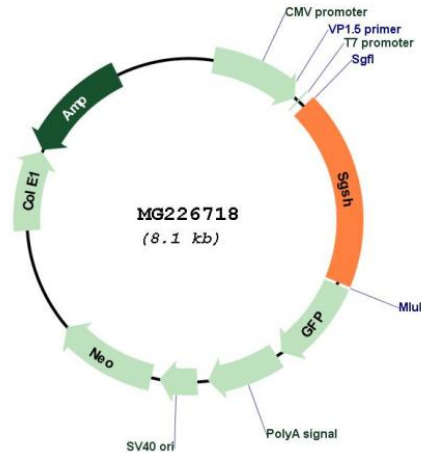
Sgfl-Mlul

Cloning Scheme:

Cloning sites used for ORF Shutting:



Plasmid Map:



ACCN: NM_018822

ORF Size: 1506 bp

OTI Disclaimer: The molecular sequence of this clone aligns with the gene accession number as a point of reference only. However, individual transcript sequences of the same gene can differ through naturally occurring variations (e.g. polymorphisms), each with its own valid existence. This clone is substantially in agreement with the reference, but a complete review of all prevailing variants is recommended prior to use. [More info](#)

OTI Annotation: This clone was engineered to express the complete ORF with an expression tag. Expression varies depending on the nature of the gene.

Components: The ORF clone is ion-exchange column purified and shipped in a 2D barcoded Matrix tube containing 10ug of transfection-ready, dried plasmid DNA (reconstitute with 100 ul of water).

Reconstitution Method:

1. Centrifuge at 5,000xg for 5min.
2. Carefully open the tube and add 100ul of sterile water to dissolve the DNA.
3. Close the tube and incubate for 10 minutes at room temperature.
4. Briefly vortex the tube and then do a quick spin (less than 5000xg) to concentrate the liquid at the bottom.
5. Store the suspended plasmid at -20°C. The DNA is stable for at least one year from date of shipping when stored at -20°C.

RefSeq: [NM_018822.3](#), [NP_061292.2](#)

RefSeq Size: 4324 bp

RefSeq ORF: 1509 bp

Locus ID: 27029

Cytogenetics: 11 83.36 cM