

Product datasheet for **MG226708**

Diaph2 (NM_172493) Mouse Tagged ORF Clone

Product data:

Product Type:	Expression Plasmids
Product Name:	Diaph2 (NM_172493) Mouse Tagged ORF Clone
Tag:	TurboGFP
Symbol:	Diaph2
Synonyms:	Dia3; Diap2; Drf2; E430022I22Rik
Mammalian Cell Selection:	Neomycin
Vector:	pCMV6-AC-GFP (PS100010)
E. coli Selection:	Ampicillin (100 ug/mL)
ORF Nucleotide Sequence:	>MG226708 representing NM_172493 Red=Cloning site Blue=ORF Green=Tags(s)

TTTTGTAATACGACTCACTATAGGGCGGCCGGAATTCGTCGACTGGATCCGGTACCGAGGAGATCTGCC
GCC**CGATCGCC**

ATGGAGGAGCTCGGGCGCGCGCTCGGGAGCCGGAGGCGCGCGGTGGCGGCGAGGAACACGGCGGGG
GCCGGAGCAACAAGCGAGGCGCGGGGAACCGGGCCGCAACGAAGAGGAGACGAGAAACAAACCCAACT
GAACATCAAATAAAACTTTGGCAGATGATGTGCGTGACCGAATTACAAGTTTCAGAAAATCTGCCACC
AAGAGAGAAAAGCCTGTTATTCAACATTCTATTGATTATCAAATGCAGTGGTTGAGATTCACCCAGCTC
TGATAGTACATGATGACCGATCTTTGATTTGTCTGAAAAGGAAGTTCTGGACCTCTTTGAGAAAATGAT
GGAAGATATGAACCTTAATGAAGAAAAGAAAGCTCCTTTGCGAAAAGAGGATTTAGCATCAAGCGTGAG
ATGGTTGTCCAGTATATTTCTGCTACTTCCAAATCTGGTGGCCTGAAAAACAGCAAAACATGATTCACCC
TTTCTTACAAGAATATGTTTCATGAATTACGATCTGGCATCTCAGATGAGAACTTCTCAACTGCCTGGA
ATCTTTGAGAGTGTCTTTAACCAGCCATCCTGTGACGTGGGTCAACAACCTTTGGCTATGAAGGACTTGGA
GTCTTACTGGATGTGCTGGAGAAGCTTCTGGACAAAAACAGCAAGAAAATATCGACAAGAAGAATCAGT
ACAAAGTCATTGAGTGCCTGAAAGCATTATGAATAATAAGTTTGGACTACAAGAATCTAGGAGACGA
GAGAAGCCTTTACTGTTGGCAAGAGCAATTGACCCGAAAACAACAGAATATGATGACTGAAATAGTAAAA
ATCCTTTCTGCTATTTGCATTGTTGGGAAGAAAACATTCTAGACAACTTTTAGGGGGCCTCAGCTGTG
CAGCTGAACTAAAATAATAGAGAACGATTTTACCAATTGTGGAAGGCTTAGAAAAATAATGAAGCCTTGCA
TCTCCAGTGGCCTGCATGCAGTTCATAAATGCACTTGTACCTCTCCATATGATCTTGATTTTCAAGT
CATTTGAGGAATGAATTCCTTCTGTTGGATTAAAAGCAATGCTCCCTACTCTTAAAGAGATAGAGAATG
AAGGGCTTGATATTCAGTTGAGAGTGTGTAAGAGAACAAGAAGATGACCTAAGTGAATATCCCACCG
TCTCAATGACATTCGAGCTGAAATGGATGATTAATGAAGTCTACCATCTGCTGTATAATATGCTGAAG
GACTGCTGCGAACCTTACTTATTATCCATTCTCAACACTTTCTGCTCATCAGAAATGATTACTACA
TCAGGCCACAGTATTATAAATCATTGAGGAGTGTGTTTACAGATAGTGCTACACTGCAGTGGCATGGA
CCCAGACTCAAGTACCGCAGCGCATAGACTTTGATTTCACTCATCTCCTAGATGCTTGTGTAATAAG



[View online »](#)

GCAAAAGTTGAAGAAAATGAGCAAAAAGCAATGGAATTTTCAAAGAAGTTCGATGAAGAATTCACAGCTC
 GTCAGGAAGCTCAAGCAGAGCTTCAGAAAAGAGATGAAAAATCAAAGAAGTGGAAAACAGAAATCCAGCA
 GCTTCGAGGACAGGGAGTTCCATCTGCAATTCAGGTCCACCTCCACCACCTCCACTGCCAGGTGCAGGA
 CCATGCCACCACCACCTCCTCCTCCACCACCTCCACTCCAGGAGTCGTCCTCCTCCTCCTC
 CACCATTACCTGGGATGCCTGGTATTCCACCACCCTCCACCACCTTTGTCTGGAGTACCTCCTCCACC
 ACCACCCCTGGGGAGTTTTCTCCTCCTATCAGGACCAATTGAGTACCATATGGAATGAAGCAGAAA
 AAATTATAAGCCTGACATACCTATGAAAAGAATCAACTGGTCCAAGATTGAGCTCAAAAGATTATCCG
 AAAACTGTGTTGGCTAAAACCTTAAAGAAGAGAAGTATGAGAATGCAGATCTATTTGCAAAAAGTGGCCTT
 GACATTTCTTCCAGATGAAAGGTCAAAGGAATACAGAGGCTGCAGAAGAAAATAGGAGTGGGCCTCCA
 AAGAAGAAAGTGAAGGAATTGAGAATTTGGATACAAAACAGCCAGAATCTATCTATCTTCTTGGAT
 CTTACCGCATGCCATACGAGGAAATAAAGAACATTATTTTGGAGGTTAATGAAGAGATGCTCAGTGAGGC
 CCTAATCCAGAATCTTGTAAAATATCTTCTGACCAGAACGCACTCCGAGAACTAGCCAGCTTAAGAGT
 GAATATGATGATCTGTGAGCCTGAGCAGTTTGGTGTGTGATGAGCACGGTAAAATGTTACGTCCTC
 GTCTCAGGAGCATCCTTTCAAACCTCACCTTTGAAGAATGTCAACAACATCAAACCAAGCATCATAGC
 AGTAACTCTTGATGTGAAGAAGTGAAGAAAAGTAAAAGCTTTAAGAGACTCTTAGAGTTGATTCTTCTG
 GTTGAAAACACATGAAGTCCAGGCTCCAGGAATGCCAGTCTCTAGGTTTTAAGATTAACCTTTCTGTGTA
 AGATCAAAGACACAAAATCAGCAGATCAAAAATCCACCCTTTTGCATTTTCTGTGAAATCTGTGATGA
 GAAATACCGGATATCCTGAAATTTCTGATGAGCTGGAGCATGTGAAAAGCGCAGGCAAAAGTTTACGCT
 CAAATACTCAAGAGCAACCTTGTAGCAATGGAACAAAGCATTCTTATCTGGAGAAAAACATCAAGAATT
 TCCCACCAGCAGAATCGCACCATGATAAGTTTGTGAAAAGATGATGAGCTTTACCCAGAATGCCAGAGA
 ACAGTATGACAACTGTCCACCATGCACAGCAATATGTTGAAGCTCTATGAGAGTCTGGGAGAATACTTC
 ATTTTTGACCCGAACACAGTAAACATGGAAGAATTTTTGGTGTCTCAACACCTTCAGAACCTATTTT
 TGAAGCACTGAAAGAAAACCAAGAGAAGAAATGGAAGAGAAGAGCAGGAGAGCAAAAGTTCGAAA
 AGAGAAAAGCGGAACAAGAGAAGCTGGAACGCCAGAAGAAGAAGAAGCAACTATTGACATAAACAAGAG
 GGTGATGAGACGGGAGTATGGATAATCTTCTGGAAGCCCTACAGTCAGGTGCAGATTCAGAGACCGCA
 GAAAGCGAATTCAGAAAATCCAGATAACAGACGGCCCTCTGGAAGATCTCGCTCTGCCACAATGG
 AGCCATGTCATCCAAG

ACGCGTACGCGGCCGCTCGAG – GFP Tag – GTTTAA

Protein Sequence:

>MG226708 representing NM_172493
 Red=Cloning site Green=Tags(s)

MEELGAAASGAGGGGGGEEHGGGRSNKRAGNRAANEEETRNPKNLNIQIKTLADDVDRITSFRRKAT
 KREKPVIIQHSIDYQTAVVEIPPALIVHDDRSLILSEKEVLDLFEKMMEDMNLNEEKKAPLRKKDFS
 MVVQYISATSKSGLKNSKHEFTLSSQEVVHELRSIGISDEKLLNCLSLRVSLTSHPVSWVNNFGEGLG
 VLLDVLEKLLDKKQENIDKKNQYKVIQCLKAFMNNKFLQRI LGDERSLLLLARAIDPKQQNMTEIVK
 ILSAICIVGEENILDKLLGGITAAAELNNRERFSPIVEGLENNALHLQVACMQFINALVTSPYDLDFRI
 HLRNEFLRCGLKAMPLTKEIENEGLDIQLRVFEENKEDDLSEL SHRLNDIRAEMDDINEVYHLLYNMLK
 DTAAPYLLSILQHFLLRNDYIRPQYKIIIECVSIVLHCSGMDPDFKYRQRIDFDFTLLDACVNK
 AKVEENEQKAMEFSKFFDEEFTARQEAQELQKRDEKIKELETEIQQLRGQGVPSAIPGPPPPPLPGAG
 PCPPPPPPPPPPPLPGVPPPPPPPLPGMPGIPPPPPPLSGVPPPPPPPGVFPPLSGPIELPYGMKQK
 KLYKPDIPMKRINWSKIEPKELSENCVWLKKEEKYENADLFAKLALTFPSQMKGQRNTEAAEENRSGPP
 KKKVKELRILDTKAQNLSIFLGSYRMPYEEIKNIILEVNEEMLSEALIQNLVKYLPDQNALRELAQLKS
 EYDDLCEPEQFGVVMSTVKMLRPRLTSILFKLTFEEHVNNIKPSIIAVTLACEELKKSSEFKRLELILL
 VGNMNSGRNAQSLGFKINFLCKIKDTSADQKSTLLHFLAEICDEKYRDIKFPDELEHVESAGKVSA
 QILKSNLVAMEQSILHLEKNIKFNPPAESHHDFVEKMMSTFNAREQYDKLSTMHSNMLKLYESLGEYF
 IFDPNTVNMEFFGDLNFRITLFEALKENHKKRMEEEKSRRAKLAKEAEQEKLERQKKKQLIDINKE
 GDETGVMNDLLEALQSGAAFRDRRKRI PRNPDRRPLERSRSRHRNGAMSSK

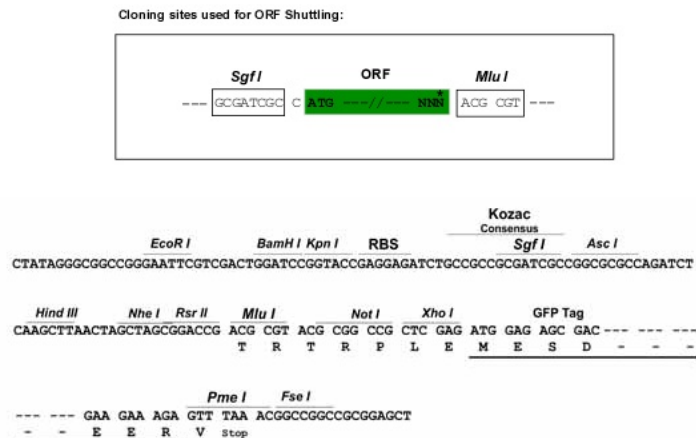
TRTRPLE – GFP Tag – V

Chromatograms:

https://cdn.origene.com/chromatograms/ja3007_c11.zip

Restriction Sites: SgfI-MluI

Cloning Scheme:



ACCN: NM_172493

ORF Size: 3306 bp

OTI Disclaimer: Due to the inherent nature of this plasmid, standard methods to replicate additional amounts of DNA in E. coli are highly likely to result in mutations and/or rearrangements. Therefore, OriGene does not guarantee the capability to replicate this plasmid DNA. Additional amounts of DNA can be purchased from OriGene with batch-specific, full-sequence verification at a reduced cost. Please contact our customer care team at custsupport@origene.com or by calling 301.340.3188 option 3 for pricing and delivery.

The molecular sequence of this clone aligns with the gene accession number as a point of reference only. However, individual transcript sequences of the same gene can differ through naturally occurring variations (e.g. polymorphisms), each with its own valid existence. This clone is substantially in agreement with the reference, but a complete review of all prevailing variants is recommended prior to use. [More info](#)

OTI Annotation: This clone was engineered to express the complete ORF with an expression tag. Expression varies depending on the nature of the gene.

Components: The ORF clone is ion-exchange column purified and shipped in a 2D barcoded Matrix tube containing 10ug of transfection-ready, dried plasmid DNA (reconstitute with 100 ul of water).

Reconstitution Method:

1. Centrifuge at 5,000xg for 5min.
2. Carefully open the tube and add 100ul of sterile water to dissolve the DNA.
3. Close the tube and incubate for 10 minutes at room temperature.
4. Briefly vortex the tube and then do a quick spin (less than 5000xg) to concentrate the liquid at the bottom.
5. Store the suspended plasmid at -20°C. The DNA is stable for at least one year from date of shipping when stored at -20°C.

RefSeq: [NM_172493.2](#), [NP_766081.1](#)

RefSeq Size: 8456 bp

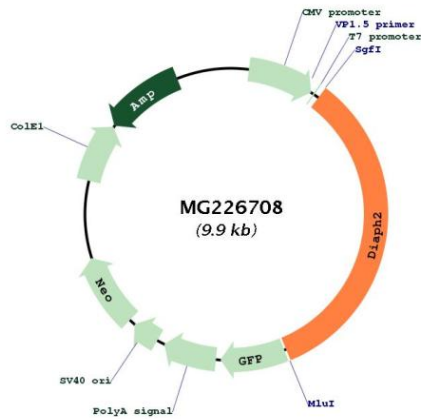
RefSeq ORF: 3309 bp

Locus ID: 54004

Cytogenetics: X E3

Gene Summary: May be involved in oogenesis.[UniProtKB/Swiss-Prot Function]

Product images:



Circular map for MG226708