

Product datasheet for **MG226707**

Ctnnd1 (NM_007615) Mouse Tagged ORF Clone

Product data:

Product Type:	Expression Plasmids
Product Name:	Ctnnd1 (NM_007615) Mouse Tagged ORF Clone
Tag:	TurboGFP
Symbol:	Ctnnd1
Synonyms:	AA409437; AU019353; Catns; Ctnnd; mKIAA0384; P120
Mammalian Cell Selection:	Neomycin
Vector:	pCMV6-AC-GFP (PS100010)
E. coli Selection:	Ampicillin (100 ug/mL)



[View online »](#)

ORF Nucleotide Sequence:

>MG226707 representing NM_007615
 Red=Cloning site Blue=ORF Green=Tags(s)

TTTTGTAATACGACTCACTATAGGGCGGCCGGAATTCGTCGACTGGATCCGGTACCGAGGAGATCTGCC
 GCC**CGGATCGCC**

ATGGACGACTCAGAGGTGGAGTCGACCGCCAGCATCTTGGCCTCTGTGAAAGAACAAGAGGCCAGTTTG
 AGAAGCTGACCCGGCGCTGGAAGAGGAGCGGCCATGTCTCGGCGCAACTGGAACGCGTCCGGGTCTC
 ACCACAAGATGCCAACTCACTCATGGCCAAATGGCACCCCTCACTCGTCGGCATCAGAACGGCCGTTTGTG
 GGCGATGCTGACCTTGAGAGACAGAAATTTTCAGATCTGAAACTCAACGGACCCAGGATCACAACCACC
 TTCTGTACAGCACTATCCCAGGATGCAGGAGCCAGGACAGATTGTGAAACCTACACCGAGGAGGACCC
 TGAAGGAGCCATGTCTGTTGTTTCTGTGGAGACCACAGATGATGGGACCACTAGACGCACGGAGACCACA
 GTCAAAAAAGTTGTAAGACAATGACAACCTCGGACAGTACAGCCTGTCCCATGGGGCCAGACGGGCTGC
 CCGTGGACGCCTCAGCAGTCTCCAATACTATATCCAGACCTTGGGCCGTGATTTTCGAAAGATGGCAA
 TGGGGGCCCTGGTCCCTATGTGGGGCAAGCGGGCACTGCCACTTCTCCTAGGAACCTCCACTATCCTCCA
 GATGGGTATGGCCGACACTATGAAGATGGTTATCCAGGTGGCAGTGACAACCTACGGCAGTCTGTCCCGGG
 TGACCCGAATTGAGGAGCGGTATAGGCCAGCATGGAAGGCTACCGGGCACCCAGTAGACAAAGATGTCTA
 TGGGCCCCAGCCCAGGTTTCAGTAGGTGGAAGCAGTGTGGACCTGCATCGTTTTTCATCCTGAGCCTTAC
 GGGCTAGAGGATGACCAGCGCAGCATGGGCTATGATGACCTCGATTACGGCATGATGTCTGATTATGGTA
 CTGCCCGTCGGACAGGAACCCCTCGACCCTCGACGACGCCTCAGGAGCTATGAAGACATGATTGGTGA
 AGAGGTGCCGCTGATCAGTACTATTGGGCTCCTTAGCTCAGCATGAGCGGGCAGTTTAGCAAGCTTG
 GATAGTTTGGCAAAGGGAATGCCCCACCTTCAAACCTGGAGACAGCCTGAGCTGCCAGAGGTGATTGCCA
 TGTTAGGCTTCCGCTTGGATGCTGTTAAGTCCAATGCAGCTGCATACCTGCAGCACTTATGCTACCGCAA
 TGACAAGGTGAAGACTGACGTGCGGAAGCTCAAGGGTATCCCGATATTGGTAGGATTGTTAGACCATCCC
 AAAAAGGAAGTGACCTCGGAGCCTGTGGAGCTCTCAAGAATATCTCTTTTGGACGTGACCAAGATAACA
 AGATCGCCATAAAAACTGTGATGGTGTCTCTGCTCGGATTGCTCCGAAAGGCTCGTGATATGGA
 CCTGACTGAAGTGATTACTGGAACCCTGTGGAATCTCTCATCCCATGATTCAATCAAAATGGAGATTGTG
 GACCATGCGCTACATGCCTTGACAGATGAAGTTATCATTCCACATTTCTGGTTGGGAGAGAGAACCTAATG
 AAGACTGTAAGCCACGGCATATTGAATGGGAGTCAGTGTACCAACACTGCTGGCTGCCTTCGGAACGT
 AAGCTCAGAGAGGAGTGAAGCCCGGAGGAACTTCGGGAATGTGACGGCTTAGTTGATGCCCTCATTTTC
 ATCGTTCAGGCAGAAATGGGCAGAAGGATTAGACAGTAAGCTTGTGGAGAATTGTGTTGCCCTCCTCC
 GGAACCTATCATACCAAGTTCATCGTGAATCCCACAGGCAGAGCGTTACCGAGGAGGCCCTCCTACTGT
 GGCTAACAGTACTGGGCCACACGCTGCCAGTTGCTTTGGAGCCAAGAAGGGCAAAGATGAGTGGTTCTCC
 AGAGGGAAAAAGCCTACAGAGGATCCAGCAATGATACAGTGGATTTCCCTAAAAGAACTAGTCCTGCTC
 GAGGCTATGAACTCTTATTTAGCCAGAAGTGGTGCGAATATACATTTCACTCCTTAAGGAGAGCAAGAC
 GCCTGCCATCTTAGAAGCCTCGGCCGAGCTATCCAGAACTTGTGTGCTGGGCGTTGGACATATGGCAGA
 TACATCCGCTCTGCTCTTCGTCAGGAGAAGGCTCTCTGCCATAGCTGAGCTCCTACGAGTGAGCATG
 AGCGAGTAGTAAAAGCTGCTTCTGGGGCACTGAGAAATCTGGCTGTGGATGCTCGGAACAAAGATTAA
 TGGCAAGCATGCTATTCCTAACTTGGTAAAGAATCTGCCAGGAGTCAACAGAACCTCCTCTGGAATTTT
 TCTGAAGATACTGTGGTCTCCATATTGAACACCATCAACGAAGTTATCGCTGAGAACTTAGAAGCTGCCA
 AAAAGCTTCGAGAGACGCAGGATTGAGAAGCTGGTGTGATCAACAAATCAGGGAATCGTTAGAAAA
 AGAAGTCCGGGACGACGCTTTGTCTGACAGACAATCTGGGGCTATAAGGAGCTTCGGAAGCCACTGGAA
 AAAGAAGGATGGAAGAAATCAGACTTCCAGGTGAATCTAAACAATGCATCTAGAAGCCAGAGCAGCCATT
 CATATGATGATAGCACTCTCCCCCTATTGACCGGAATCAAAAATCAGATAAGAAACCTGACCGTGAAGA
 AATTCCAATGAGCAATATGGGGTCAAACACAAAATCATTAGATAACAACCTATTCCACACTGAATGAGAGA
 GGAGACCACAACAGAACACTGGACCGATCTGGGGATCTGGGTGATATGGAACCATTGAAGGGAGCACCCCT
 TGATGCAGAAGATT

AG**CGGACCG**ACGCGTACGCGGCCGCTCGAG - GFP Tag - GTTTAA

Protein Sequence: >MG226707 representing NM_007615
 Red=Cloning site Green=Tags(s)

MDDSEVESTASILASVKEQEAQFEKLTRALEEERRHVSAQLERVRVSPQDANSLMANGTLTRRHQNGRFV
 GDADLERQKFSCLKLNGPQDHNHLLYSTIPRMQEPGQIVETYTEDPEGAMSVSVVETDDGTTRRTETT
 VKKVVKTMTTRTVQPVMPGPDGLPVDASAVSNNYIQTLGRDFRKNNGGPGPYVQGAGTATLPRNFHYPP
 DGYGRHYEDGYPGGSDNYGSLSRVTRIEERYRPSMEGYRAPSRQDVYGPQPQVRVGGSSVDLHRFHPEPY
 GLEDDQRSMGYDDL DYGMSDYGTARRTGTPSDPRRRLRSYEDMIGEEVPPDQYYWAPLAQHERGSLASL
 DSLRKGMPPPSNWRQPELPEVIAMLGFRLDVAVKSNAAYLQHLCYRNDKVKT DVRKLGIPILVGLLDHP
 KKEVHLGACGALKNISFGRDQDNKIAIKNCDGVPALVRLLRKARDMDL TEVITGTLWNLSSHDSIKMEIV
 DHALHAL TDEVIIPHSGWEREPNEDCKPRHIEWESVL TNTAGCLRNVSSERSEARRKLRCDGLVDALIF
 IVQAEIGQKDSKSLVENCVCLLRNLSYQVHREIPQAERYQEALPTVANSTGPHAASCFGAKKGDWFS
 RGKKTEDPANDTVDFPKRTSPARGYELLFQPEVVRIYISLLKESKTPAILEASAGAIQNL CAGRWTYGR
 YIRSALRQEKALSAIAELLTSEHERVVKASGALRNLAVDARNKELIGKHAIPNLVKNLPGGQQNSSWNF
 SEDTVVSI LNTINEVIAENLEAAKKLRETQGIKLV L INKSGNRSEKEVRAAALVLQTIWGYKELRKPLE
 KEGWKKSDFQVNLNNASRSQSSHSYDDSTLPLIDRNQKSDKKPDREEIPMSNMGSNTKSLDNNYSTLNER
 GDHNRTLDRSGDLGDMPEPLKGAPLMQKI

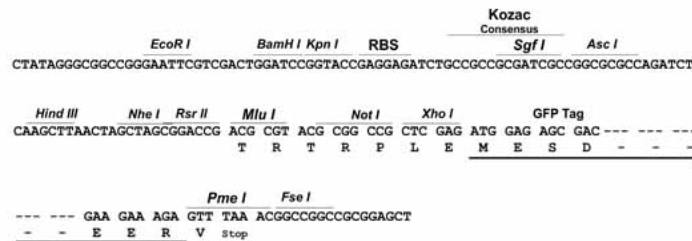
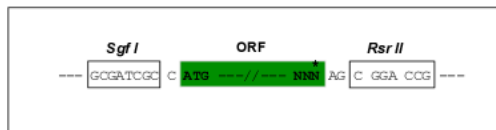
SGPTRRRLE - GFP Tag - V

Restriction Sites:

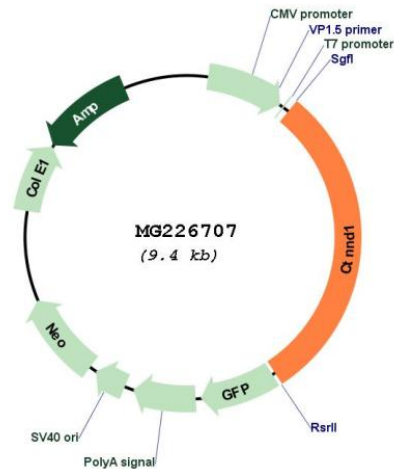
SgfI-RsrII

Cloning Scheme:

Cloning sites used for ORF Shuttling:



Plasmid Map:



ACCN: NM_007615

ORF Size: 2814 bp

OTI Disclaimer: Due to the inherent nature of this plasmid, standard methods to replicate additional amounts of DNA in *E. coli* are highly likely to result in mutations and/or rearrangements. Therefore, OriGene does not guarantee the capability to replicate this plasmid DNA. Additional amounts of DNA can be purchased from OriGene with batch-specific, full-sequence verification at a reduced cost. Please contact our customer care team at custsupport@origene.com or by calling 301.340.3188 option 3 for pricing and delivery.

The molecular sequence of this clone aligns with the gene accession number as a point of reference only. However, individual transcript sequences of the same gene can differ through naturally occurring variations (e.g. polymorphisms), each with its own valid existence. This clone is substantially in agreement with the reference, but a complete review of all prevailing variants is recommended prior to use. [More info](#)

OTI Annotation: This clone was engineered to express the complete ORF with an expression tag. Expression varies depending on the nature of the gene.

Components: The ORF clone is ion-exchange column purified and shipped in a 2D barcoded Matrix tube containing 10ug of transfection-ready, dried plasmid DNA (reconstitute with 100 ul of water).

Reconstitution Method:

1. Centrifuge at 5,000xg for 5min.
2. Carefully open the tube and add 100ul of sterile water to dissolve the DNA.
3. Close the tube and incubate for 10 minutes at room temperature.
4. Briefly vortex the tube and then do a quick spin (less than 5000xg) to concentrate the liquid at the bottom.
5. Store the suspended plasmid at -20°C. The DNA is stable for at least one year from date of shipping when stored at -20°C.

RefSeq: [NM_007615.2](#)

RefSeq Size: 5475 bp

RefSeq ORF: 2817 bp

Locus ID: 12388

UniProt ID: [P30999](#)

Cytogenetics: 2 49.45 cM

Gene Summary: Binds to and inhibits the transcriptional repressor ZBTB33, which may lead to activation of target genes of the Wnt signaling pathway (By similarity). Associates with and regulates the cell adhesion properties of both C-, E- and N-cadherins, being critical for their surface stability. Implicated both in cell transformation by SRC and in ligand-induced receptor signaling through the EGF, PDGF, CSF-1 and ERBB2 receptors. Promotes GLIS2 C-terminal cleavage.[UniProtKB/Swiss-Prot Function]