

## Product datasheet for **MG226691**

### **Dact1 (NM\_001190466) Mouse Tagged ORF Clone**

#### **Product data:**

Product Type:	Expression Plasmids
Product Name:	Dact1 (NM_001190466) Mouse Tagged ORF Clone
Tag:	TurboGFP
Symbol:	Dact1
Synonyms:	4921528D17Rik; AI115603; DAPPER; DAPPER1; Frd1; FRODO; Frodo1; MDpr1; MTNG3; THYEX3
Mammalian Cell Selection:	Neomycin
Vector:	pCMV6-AC-GFP (PS100010)
E. coli Selection:	Ampicillin (100 ug/mL)



[View online »](#)

**ORF Nucleotide Sequence:**

>MG226691 representing NM\_001190466  
 Red=Cloning site Blue=ORF Green=Tags(s)

TTTTGTAATACGACTCACTATAGGGCGGCCGGGAATTCGTCGACTGGATCCGGTACCGAGGAGATCTGCC  
 GCC**CGCATCGCC**

ATGAAGCCGGACGACGCGCGAGCCGGAGCCGCTGAGCCCCGGCCGGGGCGCGGAGGCCGAGGGGCGCT  
 GGC GCGAGAGGGGCGAGGCGGACACGGAGCGGCAGCGTACCCGCGAGCGCCAGGAGGCCACGCTGGCGGG  
 GCTGGCGGAGCTGGGGTACCTGCGGCAACGCCAAGAGCTGCTGGTGCGCGGTGCGCTGCGCTGCTCCGGG  
 ACCGTGGGGACCGTCGCGCCGCGCTCCGGGGAGCTGCGGGGAGACGCGGCGCAGCGCAGCCGCTGGAGG  
 AGAAGTTCCTGGAAGAGAACATCTTGCTGCTGCGAAGGCAGTTGAATTGTTTGAGGAGAAGAGATGCCGG  
 TTTGTTGAATCAGTTGCAAGAATTGACAAGCAGATAAGTGACCTGAGACTGGATGTGGAGAAGACATCT  
 GAAGAGCACCTGGAGACAGACAGCCGGCTAGCTCAGGGTTTTATGAGCTGAGTGATGGAGCTTCGGGCT  
 CCCTCTCTAACTCCTCAACTCCGTGTTCACTGAGTGTTGTCCAGTTGCCATTCAGCACCTGCTTCTG  
 CAGCCCCTTGGAGCGGCCTTGACCATCTCAGACGGTTGCCCAAATCTGCAGATCTCATAGGATGGTTG  
 GAATGTAAGGGCGCCCTGTGAAGACCAGGCCTCAGGGACAGTGTGCAGTTCGCCCTCCACACCACAAT  
 TTAATTCCTTGATGTCATTGCAGATGTGAATCCTAAATACCAAGTGTGATCTTGTGTCTAAAAACGGAA  
 TGACGTATATCGCTACCCAGTCCACTTCATGCTGTGGCTGTGCAGAGCCCAATGTTTCTCCTTTGTCTG  
 ACGGGCAACACTCTGAGGGAAGAGGAGGGGCTTGGGAGCCATGCCAGCGACATCTGCATTGGATCTGAAC  
 TGAACGCCACAAAACAGACAATTCCTGCCATCTCCAAGCAGTTTGTGGTCCGCTTCCCATCCTGCATC  
 CAGTAAGAAAAATGGATGGGTATATTTGAGCCTCGTGCAGAAGAAAACACACCCTGTAAGGACCAATAAA  
 CCTAGAACCAGTGTGAACGCTGACCCTACCAAGGCCTTCTGAGGAATGGAAGTGTGTGTGCAGGGCCC  
 CTAGTGGCGTCCACCGGCAGTAGTGTGAACTTAAGAATACAAAACAGATGTGTTTCCCGCTGGGGG  
 AATAACCTCTTTGGAAAACGGGCCATTCTCCCCTCCTAAGCAGAGGTCCAAGACTCAAAGACAGACCAG  
 TTAGAAGCAAGAGGTTGGCTCTGCCGGAGAGCTGCTCGCAGGCGCCGATGGAACCCCAAAGCAAGC  
 ATGTGCCCAAAGCCGCAAGGCAGCCTCTCAAGAGCTCACAAGGTGTCAAGCCGGGCTGGGGGAATCCAT  
 GAAGGAAAGCAATCAGGCCTCCGCTGTTTCTCCTAAAACAAGTCTGGCAGAGGCCCTGTCGCCCCCGCA  
 GAGAGCAAAGCCCTGCAGCTCCCGAAAAGATGTGCGAGAAGAACAGCCTCCAGGCTGTGCCCGCGCTGG  
 ACAGGCCGGCCTTGGACTTCAAAGCGAGGGCTCATCTCAAAGCCTCGAGGAAGGCATCTGGTAAAAGC  
 TCAGTTTATTCCGGGGCAGCAGGCGGCCAGGCCTCACCGTGCACACAGGAACCCGGGTGTGCAAGG  
 AGCGCCACCTTGAAGGCCGCGGCCAGGCAGCCATGGAACACGGCCTGCCACCCTCAGGGAGAAACCGC  
 GGGCAGCAGGCAAGAAGTGCCGTTTCCCAGACACTCGGATACAAATAAGAAATTCAGGAAGACCTCCGC  
 CAAGGGCCGCGCAGTGGCGGGCTGCAGGACGCTGGCCTTCCCAGTAGGGCCCTGGGCACCGCGGCCAT  
 CGGGCGGGTAGCAGGGCGCACGCGCATGGCCGGGAGCCCGTGGTGGCCAAACCGAAGCACAAAGCAACCG  
 ACTACCGCGGTGGAATCGTCAGCCGAGGTCTCCTACGAAGAAGCCCTGCGGAGGGCCCGAGGGCTCG  
 CAGGGAGCACGGGGCTGCCTACCGGGTGGCTGTGCGCCTGCCTTACGCCAGCCCCATGCCTACGTGCC  
 AGCGACTCCGAGTACTCGGCGAGTGCAGTGCCTTCCACTCCACGGTGGTGGACACCAGCGAGGACG  
 AGCAGAGCAACTACACCACCACTGCTTCGCGACAGCGAGTCCAGCGTGAGCGAAGGCGACTTCGTGGG  
 CGAGAGCACACCACCAGCGACTCAGAGGAGAGCGGGGTTTAACTGGTCCCAGTTTGTCCAGACTCTC  
 CGGATTCAAACGGTACAGGCCCCAGACCTCCACACCCGTCACACAAAACCTTTGTCAAATCAAGGCTT  
 CGCACAACCTCAAGAAGAAGATCTCCGTTTCCGCTCTGGCTCTTTGAACTGATGACTACCGTT

**ACCGT**ACGCGGCCGCTCGAG - GFP Tag - GTTTAA

**Protein Sequence:** >MG226691 representing NM\_001190466  
 Red=Cloning site Green=Tags(s)

```

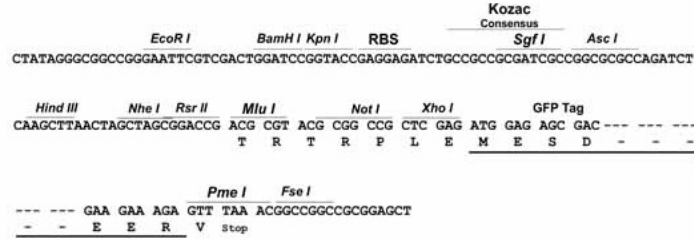
MKPDAAREPEPLSPGRGAEAEGRWRERGEADTERQRTREERQEATLAGLAELGYLRQRQELLVRGALRCSG
TVGTVAPRSGELRGDAAQRSRLEEKFLLEENILLRRQLNCLRRRDAGLLNQLQELDKQISDLRLDVEKTS
EEHLETDSPSSGFYELSDGASGSLSNSNSVNSECLSSCHSSTCFCSPLAALTI SDGCPKSADLIGWL
ECKGGPCEDQASGTVCSSPSTPQFNSLDVIADVNPKYQCDLVSKNGNDVYRYPSPHAVAQSPMFLLCL
TGNTLREEEGLGSHASDICI GSELNATKTDNSLPSPSSLWSASHPASSKKMDGYILSLVQKTHPVRTNK
PRTSVNADPTKGLLRNGSVCVRAPSGVPPGSSVNFKNKQMCPLPAGGITSLENGPFSPPKQRSKDSDTDQ
LESKRLALPESCSAGAAMEPQSKHVPKAAKASQELTRCQAGLGESMKESNQASAVSPKTSPPGRGPVAPA
ESKALQLPKKMSQKNSLQAVPALDRPALDFKSEGSSQSLEEGHLVKAQFIPGQQAARPHRAHRNPGVAR
SATLKARGQAAMEHGLPTVREKPRAGKCRFPDDSDTNKKFRKTSAGRRSSGGLQDAGLPGRALGTGGH
RAGSRAHAHGREPVVAKPKHKRTDYRRWKSSAEVSYEEALRRARRARREHGAAYRVAVALPYASPYAYVP
SDSEYSAECESLFHSTVVDTSSEDEQSNYTTNCFGDSESSVSEGDFVGESTTTSDSEESGGLIWSQFVQTL
PIQTVTAPDLHTRPTKTFVKIKASHNLKKKILFRSGSLKLMTTV
  
```

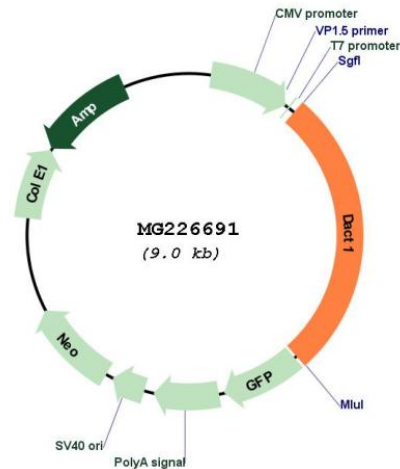
TRTRPLE - GFP Tag - V

**Restriction Sites:** Sgfl-MluI

Cloning Scheme:

Cloning sites used for ORF Shutting:



**Plasmid Map:**


**ACCN:** NM\_001190466

**ORF Size:** 2445 bp

**OTI Disclaimer:** The molecular sequence of this clone aligns with the gene accession number as a point of reference only. However, individual transcript sequences of the same gene can differ through naturally occurring variations (e.g. polymorphisms), each with its own valid existence. This clone is substantially in agreement with the reference, but a complete review of all prevailing variants is recommended prior to use. [More info](#)

**OTI Annotation:** This clone was engineered to express the complete ORF with an expression tag. Expression varies depending on the nature of the gene.

**Components:** The ORF clone is ion-exchange column purified and shipped in a 2D barcoded Matrix tube containing 10ug of transfection-ready, dried plasmid DNA (reconstitute with 100 ul of water).

**Reconstitution Method:**

1. Centrifuge at 5,000xg for 5min.
2. Carefully open the tube and add 100ul of sterile water to dissolve the DNA.
3. Close the tube and incubate for 10 minutes at room temperature.
4. Briefly vortex the tube and then do a quick spin (less than 5000xg) to concentrate the liquid at the bottom.
5. Store the suspended plasmid at -20°C. The DNA is stable for at least one year from date of shipping when stored at -20°C.

**RefSeq:** [NM\\_001190466.1](#), [NP\\_001177395.1](#)

**RefSeq Size:** 3761 bp

**RefSeq ORF:** 2448 bp

**Locus ID:** 59036

**Cytogenetics:** 12 C3

**Gene Summary:**

Involved in regulation of intracellular signaling pathways during development. Specifically thought to play a role in canonical and/or non-canonical Wnt signaling pathways through interaction with DSH (Dishevelled) family proteins. The activation/inhibition of Wnt signaling may depend on the phosphorylation status. Proposed to regulate the degradation of CTNNB1/beta-catenin, thereby modulating the transcriptional activation of target genes of the Wnt signaling pathway. Its function in stabilizing CTNNB1 may involve inhibition of GSK3B activity. Promotes the membrane localization of CTNNB1. The cytoplasmic form can induce DVL2 degradation via a lysosome-dependent mechanism; the function is inhibited by PKA-induced binding to 14-3-3 proteins, such as YWHAB (By similarity). Seems to be involved in morphogenesis at the primitive streak by regulating VANGL2 and DVL2; the function seems to be independent of canonical Wnt signaling and rather involves the non-canonical Wnt/planar cell polarity (PCP) pathway. The nuclear form may prevent the formation of LEF1:CTNNB1 complex and recruit HDAC1 to LEF1 at target gene promoters to repress transcription thus antagonizing Wnt signaling (By similarity). May be involved in positive regulation of fat cell differentiation. During neuronal differentiation may be involved in excitatory synapse organization, and dendrite formation and establishment of spines.[UniProtKB/Swiss-Prot Function]