

Product datasheet for **MG226685**

Ptprd (NM_011211) Mouse Tagged ORF Clone

Product data:

Product Type:	Expression Plasmids
Product Name:	Ptprd (NM_011211) Mouse Tagged ORF Clone
Tag:	TurboGFP
Symbol:	Ptprd
Synonyms:	1110002J03Rik; 3000002J10Rik; B230219D21Rik; R-PTP-delta
Mammalian Cell Selection:	Neomycin
Vector:	pCMV6-AC-GFP (PS100010)
E. coli Selection:	Ampicillin (100 ug/mL)
ORF Nucleotide Sequence:	>MG226685 representing NM_011211 Red=Cloning site Blue=ORF Green=Tags(s)

TTTTGTAATACGACTCACTATAGGGCGGCCGGAATTCGTCGACTGGATCCGGTACCGAGGAGATCTGCC
GCC**CGATCGCC**

ATGCCGTTGACAACTGCAGGATGGTGCCCGTGGCCAGGCCGCTGTCGCTGCTCCTCACCTTCTTCTCT
GCGCCTGTGCTGAGACACCCCCAGGTTTACACGAACTCCGGTTGATCAGACAGGGGTCTCTGGAGGAGT
TGCATCATTCAATTTGTCAAGCTACAGGAGACCCAAAGACCTAAAATTGTCTGGAACAAAAAGGAAAGAA
GTCAGCAACCAGAGATTTGAGGTAATAGAATTTGACGATGGATCTGGATCAGTACTCAGAATACAGCCCT
TAAGGACTCCACGGGATGAGGCCATTTATGAATGTGTGGCCTCGAATAATGTGGGAGAAATCAGTGTGTC
CACAAGACTCACAGTTTTACGTGAGGATCAGATTCCTAGAGGGTCCCTACGATTGATATGGGCCGCGAG
TTGAAGGTGGTGAACCGGACCCGCACCCACCATGCTGTGTGACGCCAGCGGTAATCCGGATCCAGAAA
TCACTTGGTTAAAGATTTCTTACCTGTTGACACAAGCAACAACAATGGTCGTATTAAGCAGTTACGATC
AGAATCTATTGGTGGTACACCAATAAGAGGAGCGCTGCAGATCGAACAGAGCGAAGAATCCGACCAAGGA
AAATACGAGTGTGTTGCCACCAACAGCGCGGCACTCGTACTCTGCCCTGCCAATTTATATGTCAGAG
AGCTGCGAGAAGTTCGCCGTGTCCACCAAGATTCTCTATCCCACCCACTAATCATGAAATCATGCCAGG
TGGAAGTGTAAATATCACCTGTGTGGCAGTGGGGTCAACCAATGCCTTATGTGAAGTGGATGTTGGGGCA
GAAGACTGACACCAGAAGATGATATGCCGATAGGACGAAATGTCCTAGAAGTGAATGACGTAAGACAGT
CAGCAAATACACCTGTGTTGCTATGTCGACGTTGGGGTCAATGAAGCAATAGCCAGATCACTGTCAA
AGCCTTACCCAAGCCTCCAGGAACTCCTGTAGTGACCGAGAGCACAGCTACAAGCATCACACTAACATGG
GACTCTGGGAATCCTGAGCCTGTCTCTTACTACATCATTACAGCATAAGCCTAAAAATCTGAAGAACCAT
ATAAAGAAATTTGATGGGATAGCCACCACGCTACAGTGTGGCCGATTAAGTCCCTACTCGGATTATGA
ATTTAGAGTGTGCTGTCAATAACATTGGACGAGGCCAGCAAGTGAAGTGTGTTAACTCAGACCTCA
GAACAAGCACCATCCAGTGCCCCACGGGATGTTACGGCACGCATGTTGAGCTCTACCACCATTCTGGTAC
AATGGAAGGAACCTGAGGAGCCAAATGGACAGATCCAAGGGTATAGAGTTTATTACAATGGACCCAC
TCAGCATGTCAACAACCTGGATGAAACACAATGTAGCTGATAGCCAAATCACTACTATTGGCAATTTAGTA



CCCCAAAAACATACTCTGTCAAAGTCCTGGCTTTTACCTCAATTGGAGATGGACCTCTTCTAGTGATA
TACAAGTCATCACTCAGACAGGAGTACCAGGGCAGCCACTAAACTTCAAAGCAGAACCTGAATCTGAAAC
AAGTATTTTGGCTGTCTTGGACACCGCCACGATCAGATACCATTGCCAGCTATGAACTAGTCTACAGAGAT
GGGGATCAAGGAGAAGAGCAGCGAATCACCATTGAGCCAGGCACATCTTATAGGCTTCAAGGGCTGAAAC
CAAACAGCCTGTACTACTCCGTCTGTCTGCACGCTCTCCTCAAGGCCTGGGTGCTTCTACAGCTGAAAT
ATCAGCTAGAACCATGCAATCAATGTTTGCAAAAATTTTCATGTCAAAGCAGTTATGAAGACTTCAGTG
CTGCTGTCTTGGGAGATTCCAGAGAATTATAATTCTGCTATGCCTTTCAAATTTTATGATGATGGGA
AAATGGTGAAGAAGTGATGGCCGAGCTACCCAGAAGCTGATTGTTAACCTGAAGCCTGAGAAGTCATA
TTCTTTGTGTTAACCAATCGTGGGAACAGTGCTGGTGGATTGCAGCATAGGGTGACAGCAAGACTGCC
CCAGATGTGCTCCGCACCAAGCCTGCCTTCATTGGGAAGACAACTTGGATGGCATGATTACTGTGCAAC
TGCCTGATGTTCTGCAATGAAAAATAAAGGGTTACTACATTATAATTGTGCCTTTGAAGAAGTCGCG
TGGGAAATTCATCAAGCCCTGGGAGAGCCCTGATGAGATGGAGTTAGATGAGCTGCTTAAGGAGATATCT
AGAAAACGCAGAAGCATTGTTATGGAAGAGAAGTTGAATTAAGCCATATATTGCTGCTCACTTTGATG
TCCTTCCCACTGAGTTCACCCTGGGGGATGACAAACATTATGGTGGATTTACGAACAAACAGCTCCAAG
TGGACAAGAATATGTCTTCTTTGTGTTAGCAGTGATGGACCATGCAGAGTCTAAGATGTATGCAACCAGC
CCATACTCCGACCCTGTTGTGTCATGGATCTGGATCCACAGCCAATCACAGACGAAGAGGAAGGCTTGA
TATGGGTGCTAGGTCTGTCTTGCAGTGGTGTATCATCTGTATTGTGATTGCTATTCTTCTTTATAA
AAGGAAGAGGGCAGAGTCGGAGTCCAGAAAAGAGCAGCTTACCAAACAGTAAGGAGGTCCCTTACACCAC
CCAACCGACCCAGTAGAACTGAGGCGCCTTAACTTTCAAACACCAGGTATGGCTAGCCATCTCCCAATAC
CTATCTTGGAACTTGCAATCATATTGAGAGGTTGAAAGCAAATGATAACCTGAAGTTTTCCAGGAATA
TGAGTCAATTGACCTGGCCAGCAGTTCACATGGGAACACTCAACTTGGAGTAAACAAACCAAGAAC
AGATAGCAAAATGTCATTGCATACGATCACTCCCGGTTCTTATCAGCAATAGAAGGAATCCCAGGAA
GTGACTATGTGAATGCCAACTACATAGATGGCTATAGGAAAACAAATGCCTATATTGCAACCCAGGGATC
TCTTCTGAAACATTTGGGGACTTTTGGAGAATGATATGGGAGCAACGAAGTGCCACAGTTGTCTGATG
ACAAAGCTAGAAGAAAGGTGAGGGTGAAGTGTGACCAGTATTGGCCAGCAGAGGCACAGAAAACACG
GGCTGGTCCAGGTGACGCTGCTGGATACTGTGGAGCTTGCACATACTGTGTCCGGACATTTGCACTTTA
TAAGAATGGATCGAGTGAGAAGAGGGAAGTGAGACAATCCAGTTCACCGCCTGGCTGATCATGGTGT
CCAGAGCACCCACACCTTCTAGCTTCTTACGGAGAGTCAAACCTGCAATCTCCAGATGCAGGGC
CAATGGTGGTACACTGCAGTGTGGTGTGGCAGAACTGGCTGCTTCAATGTAATAGATGCCATGTTAGA
AAGAATAAAGCATGAAAAACTGTAGATATTTATGCCATGTAACCTTAAAGAGAGCCAGAGGAATTAC
ATGGTACAAACAGAAGACCAGTACATCTTATCCATGATGCACTGTTAGAAGCAGTGACATGTGGAATA
CCGAAGTGCCGGCTAGAACTTGTATGCCTACATTCAGAAGCTGACACAATAGAAAACAGGGGAGATGT
CACCGAATGGAGCTCGAATTTAAGCGTCTAGCCAGCTCAAAGCTCACACCTCAAGATTCATCAGTGCC
AATCTTCCATGTAATAAATTCAAAAACCGCCTGTTAATATTATGCCATATGAATCCACAAGGGTGTGCC
TGCAGCTATCCGAGGAGTTGAAGGCTCTGATTACATCAATGCCAGTTTCTTGTGATGATATAGACAACA
GAAAGCTACATTGCTACCCAGGGGCCCTTAGCAGAGACAACCTGAAGACTTTTGGCGCATGCTTTGGGAA
CACAATCCACCATCGTTGTGATGCTCACCAAGCTGAGAGAAATGGGCAGAGAGAAATGTACCAGTACT
GGCCAGCTGAACGATCTGCAAGTACCAGTATTTTGTGATAGATCCCATGGCTGAATATAACATGCCTCA
GTATATCCTGAGGGAATCAAGGTACGGATGCCAGGATGGCCAGTCCCAGACAGTGAGGCAGTTCCAG
TTCACTGACTGGCCAGAACAAGGAGTGCCAAAGTCTGGAGAAGGATTTATTGACTTCATTGGCCAAGTCC
ATAAAACAAAGGAGCAGTTTGGCCAAGATGGGCCATTTCCGTGATTGCAAGTCCCGGCTTGGAAAGAC
TGGAGTTTTATAACATTGAGTATTGTGTTGGAAGAATGAGATATGAAGGGTGGTAGATATCTTCCAG
ACTGTCAAATGTTAAGAACACAACGACCAGCCATGGTACAAACAGAGGATCAATACCAGTTCTGCTATC
GAGCCGCACTAGAATACCTGGGCAGCTTTGATCACTATGCAACG

ACGCGTACGCGGCCGCTCGAG - GFP Tag - GTTTAA

Protein Sequence: >MG226685 representing NM_011211
 Red=Cloning site Green=Tags(s)

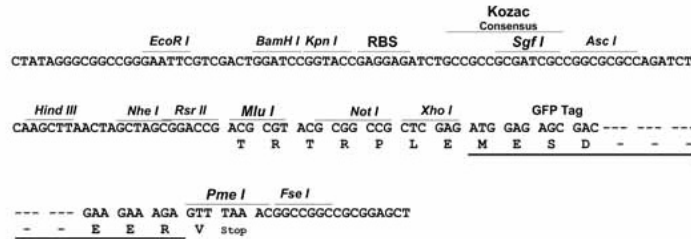
MPLTNCRMVVARPLSLLTFFLCACAETPPFRTRTPVDQTGVSGGVASFICQATGDRPKIVWNKKGKK
 VSNQRFEVIEFDDGSGSVLRIQPLRTPRDEAIYECVASNNVGEISVSTRLLTVLREDQIPRGFPTIDMGPO
 LKVVVERTRTATMLCAASGNPDPEITWFKDFLPVDTSNNGRIKQLRSESIGGTPIRGALQIEQSEESDQG
 KYECVATNSAGTRYAPANLYVRELREVRVPPRF SIPPPTNHEIMPGGSVNITCVAVGSPMPYVKWMLGA
 EDLTPEDDMPIGRNVLELNDVRQSANYTCVAMSTLGVIEAIAQITVKALPKPPGTPVVTSTATSITLW
 DSGNPEPVSYIIQHKKPKNSEEPYKEIDGIATTRYSVAGLSPYSDFRFRVAVNNIGRGPASEPVL TQTS
 EQAPSSAPRDVQARMLSSTTILVQWKEPEEPNGIQGYRVYTMPTQHVNNWMKHNVDASQITIGNLV
 PQKTYSVKVLAFSTIGDGPLSSDIQVITQTVPGQPLNFKAPESETSILLSWTPPRSDTIASYELVYRD
 GDQGEQRITIEPGTSYRLQGLKPNLSYFRLSARSPQGLGASTAEISARTMQSMFAKNFHVKAVMKT SV
 LLSWEIPENYNSAMPFKILYDDGKMVEEVDGRATQKLI VNLKPEKSYSFVLTNRGNSAGGLQHRVTA
 PDVLRTPAFIGKTNLDGMITVQLPDVPANENIKGYYIIIVPLKKS RGF IKPWESPDEMEDELLEKIS
 RKRRSIRYGREVELKPYIAAHFDVLPTEFTLGDCKHYGGFTNKQLQSGQEYVFFVLA VMDHAESKMYATS
 PYSDPVVSMDLPQIPITDEEEGLI WVGVPVLA VFIICIVIAIILYKRKRAESESRSKSSLPNSKEVPSHH
 PTDPVELRRLNFQTPGMASHPIPIELADHIERLKANDNLKFSQEYESIDPGQQTWEHSNLEVNPKN
 RYANVIAYDHSRVLLSAIEGIPGSDYVNANYIDGYRQKNAYIATQGSLPETFGDFWRMIWEQRSATVMM
 TKLEERSRVKCDQYWP SRGTETHGLVQVTLDDTVELATYCVRTFALYKNGSSEKREVRQFQFTAWPDHGV
 PEHPTPFLAFLRRVKT CNPPDAGPMVHCSAGVGR TGCFIVIDAMLERIKHEKTVDIYGHVTLMRAQRNY
 MVQTEDQYIFIHDALLEAVTCGNTEVPARNLYAYIQKL TQIETGENVTGMELEFKRLASSKAHTSRFISA
 NLP CNKFKNRLVNIMPYESTRVLQPIRGVEGSDYINASF LDGYRQKAYIATQGPLAETTEDFWRMLWE
 HNSTIVVMLTKLREMGREKCHQYWP AERSARYQYFVDPMAEYNMPQYIILREFKVT DARDGQSRTVRQFQ
 FTDWPEQGVPKSGEGFIDFIGVHKTKEQFGDGPISVHCSAGVGR TGVTITLSIVLERMR YEGVVDIFQ
 TVKMLRTQRPAMVQTEDQYQFCYRAALEYLGSFDHYAT

TRTRPLE - GFP Tag - V

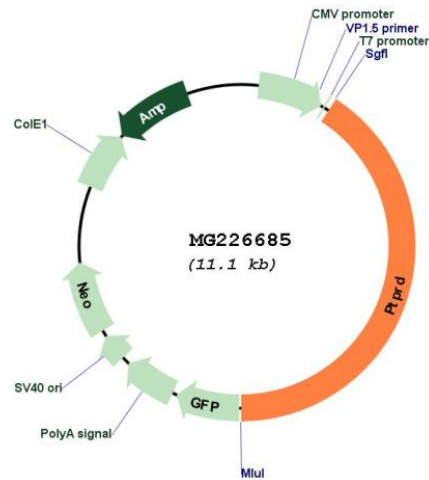
Restriction Sites: SgfI-MluI

Cloning Scheme:

Cloning sites used for ORF Shutting:



Plasmid Map:



ACCN: NM_011211

ORF Size: 4524 bp

OTI Disclaimer: The molecular sequence of this clone aligns with the gene accession number as a point of reference only. However, individual transcript sequences of the same gene can differ through naturally occurring variations (e.g. polymorphisms), each with its own valid existence. This clone is substantially in agreement with the reference, but a complete review of all prevailing variants is recommended prior to use. [More info](#)

OTI Annotation: This clone was engineered to express the complete ORF with an expression tag. Expression varies depending on the nature of the gene.

Components: The ORF clone is ion-exchange column purified and shipped in a 2D barcoded Matrix tube containing 10ug of transfection-ready, dried plasmid DNA (reconstitute with 100 ul of water).

Reconstitution Method:

1. Centrifuge at 5,000xg for 5min.
2. Carefully open the tube and add 100ul of sterile water to dissolve the DNA.
3. Close the tube and incubate for 10 minutes at room temperature.
4. Briefly vortex the tube and then do a quick spin (less than 5000xg) to concentrate the liquid at the bottom.
5. Store the suspended plasmid at -20°C. The DNA is stable for at least one year from date of shipping when stored at -20°C.

RefSeq: [NM_011211.4](#)

RefSeq Size: 9127 bp

RefSeq ORF: 4527 bp

Locus ID: 19266

UniProt ID: [Q64487](#)

Cytogenetics: 4 36.94 cM

Gene Summary: Can bidirectionally induce pre- and post-synaptic differentiation of neurons by mediating interaction with IL1RAP and IL1RAPL1 trans-synaptically (PubMed:25908590). Involved in pre-synaptic differentiation through interaction with SLITRK2 (PubMed:25989451).
[UniProtKB/Swiss-Prot Function]